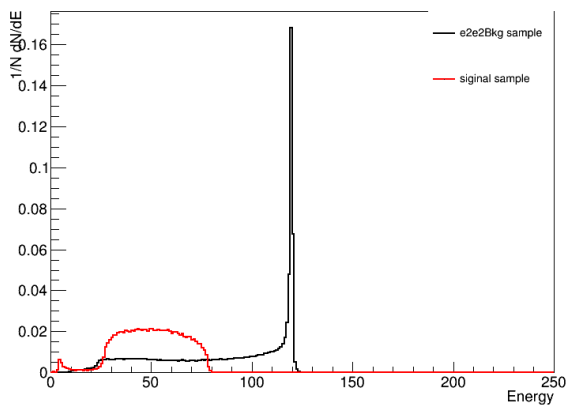


What I did last week

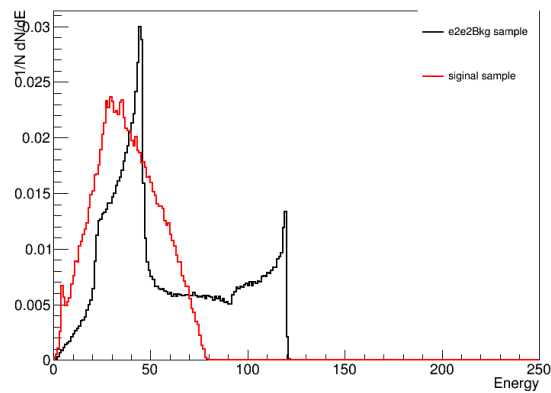
- Learn how to use root, tree
- Learn some basics knowledge about CEPC
- Drew $u\bar{u}\gamma\gamma$ channel distribution

$u\bar{u}\gamma\gamma$ channel distribution

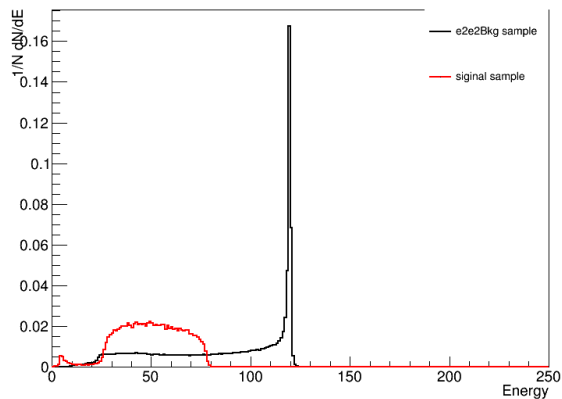
muMenergy



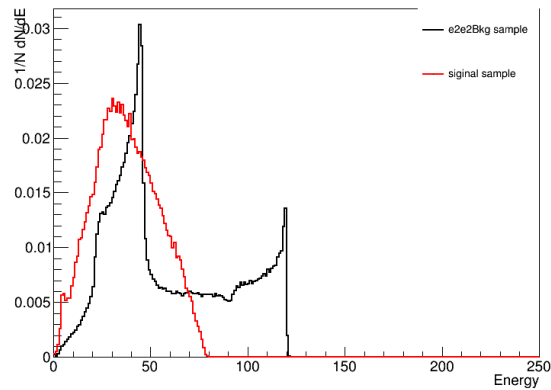
muMpT



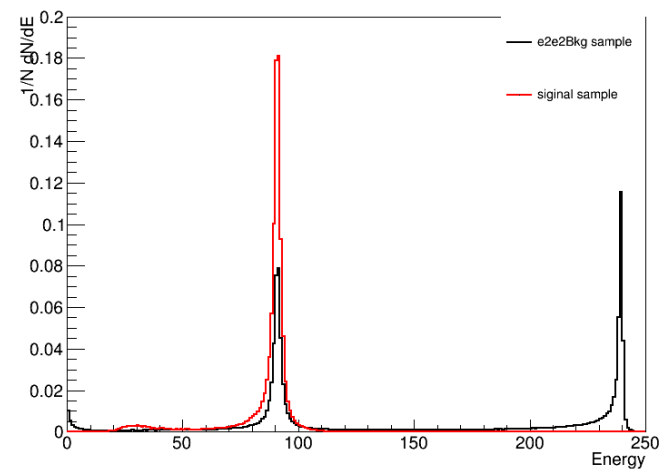
muPenergy



muPpT

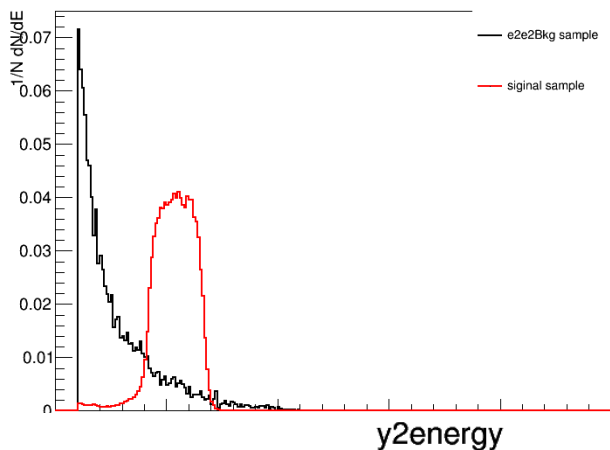


mumuinvariantmass

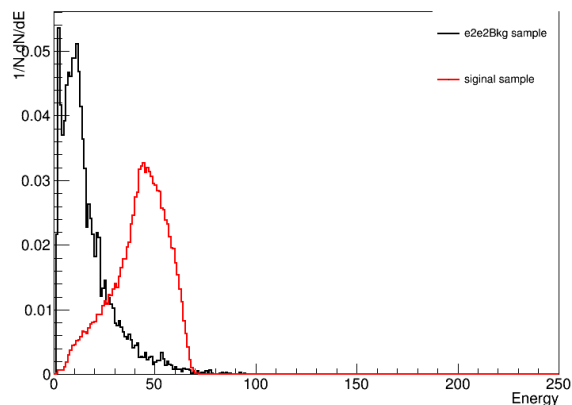


$u\bar{u}\gamma\gamma$ channel distribution

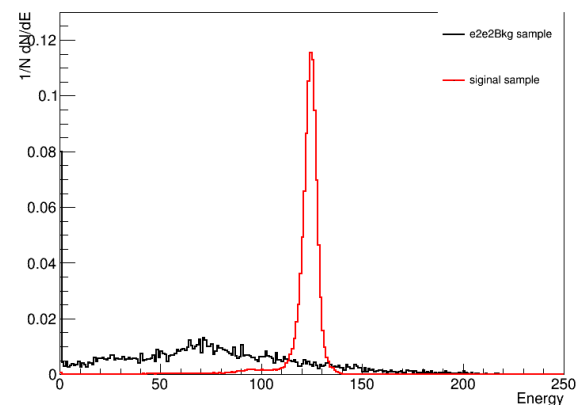
y1energy



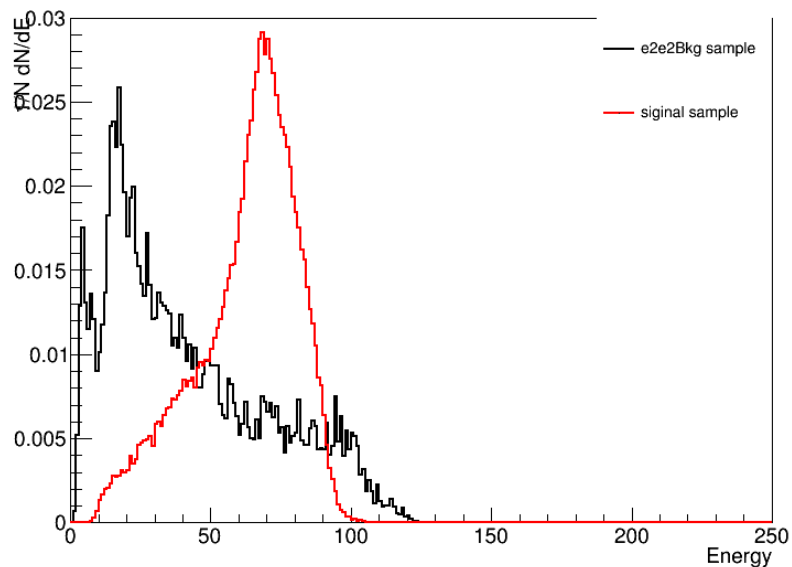
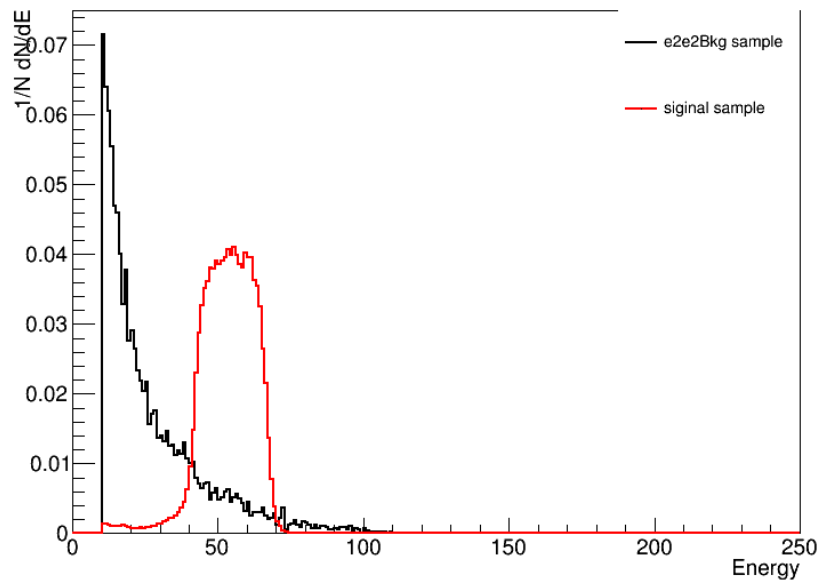
y1pT



yyinvariantmass



y2pT



Goal for summer

- Use multivariable analysis to simulate $u\bar{u}\gamma\gamma$ channel

This week's plan

- Find out variables that I can use to analysis data.(Difference between background and signal)
- Learn multivariable analysis

Two background need to consider

- $ee \rightarrow Z \rightarrow uu$
- $ee \rightarrow tt \rightarrow uu$