

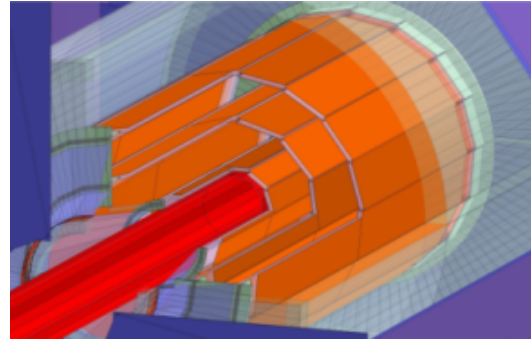
# Mechanical Design Status of Silicon Vertex Detector Prototype

Jinyu Fu, Gang Li, Zhaoru Zhang, Mingyi Dong,  
Zhijun Liang(梁志均), Joao Guimaraes da Costa

IHEP

# Layout of CEPC Silicon Vertex Detector

	$R$ (mm)	$ z $ (mm)	Current $z$ in total
Layer 1	16	62.5	} 130.6 mm
Layer 2	18	62.5	
Layer 3	37	125.0	} 263.1 mm
Layer 4	39	125.0	
Layer 5	58	125.0	} 263.1 mm
Layer 6	60	125.0	



6 layer of sensors (3 layer barrels, each has sensors mounted double sides)

\* **Working temperature range:** 20-50 °C

\* **Power dissipation:**

Final goal:  $\leq 50$  mW/cm<sup>2</sup>. (air cooling )

Current (short term) goal:  $\leq 200$  mW/cm<sup>2</sup>. (air cooling)

\* **Single point resolution:** currently in CDR range from 2.8-6  $\mu\text{m}$ , eventually we aim for only one type of pixel sensor with single point resolution of 3-5  $\mu\text{m}$ .

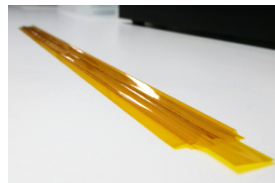
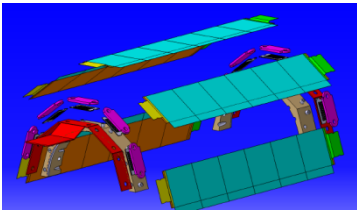
# Challenges

**Material budget:** 0.15%  $X/X_0$  (radiation length) for each single sensor layer.

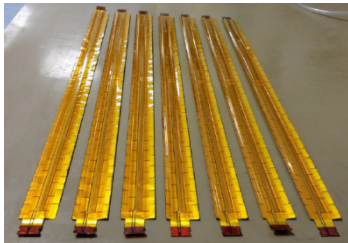
**Position stability:** (caused by any vibration) should be better than the sensor's single point resolution which is within 3-5  $\mu\text{m}$ .

All challenges to the design mainly come from these two key requirements, which requires the development of ultra light material with high stiffness besides the feasible structure design. We currently use carbon fiber composite materials to make the main structures .

Mu3e  
0.1%  $X/X_0$

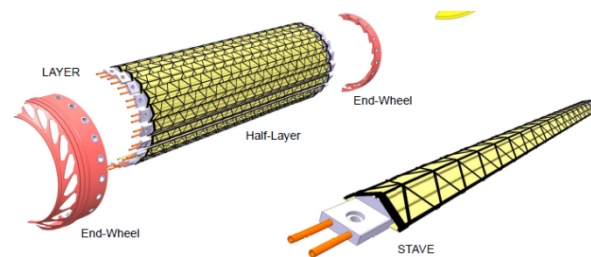


Mock-up ladders made of tape heaters



Made of aluminium-polyimide laminate (25  $\mu\text{m}$  thickness each), laser structured meander for heating and temperature measurement.

Alice ITS Upgrade  
0.3%  $X/X_0$

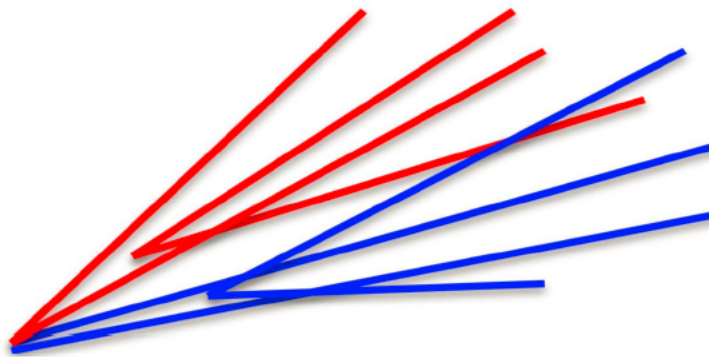


These two experiments both have pixel sensors on one side of the support. Our Material budget requirement is between them and closer to Mu3e, but the position stability is higher than it.

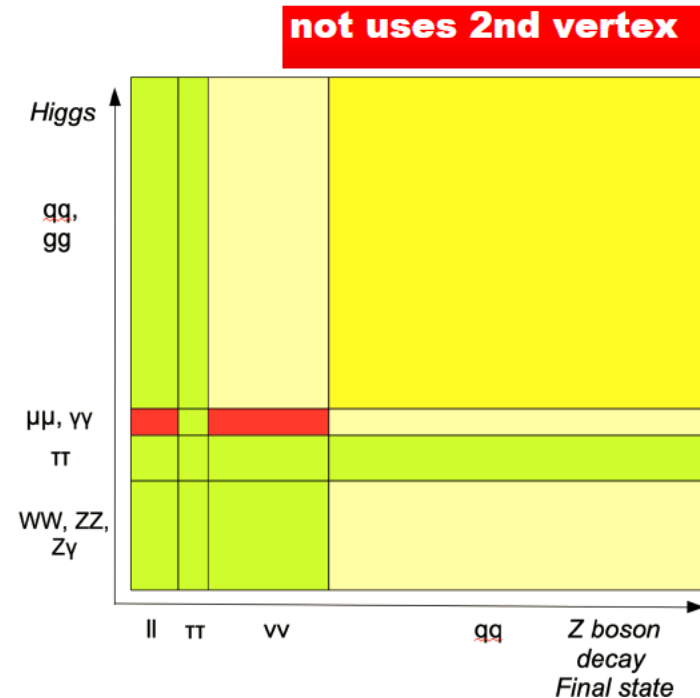
# Layout Optimization

- *by Gang*

- **Jet flavor/tau tagging is important for CEPC physics study, ~70% of Z, W, and H decay products are jets**
- **Mainly determined by the vertex displacement**
- **VXD essential to measure the vertex displacement**
- **Fast/full simulation tools used to optimize layout**



Vertex displacement



# Layout Optimization

-by Zhaoru

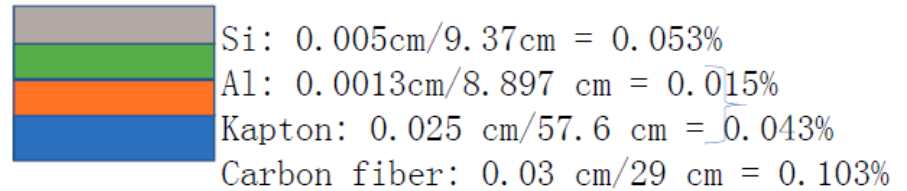
## Basic Comparison

- Default
- Default@4um
- 3 single-layers + 4 um + supporting  
0.267% X/X0

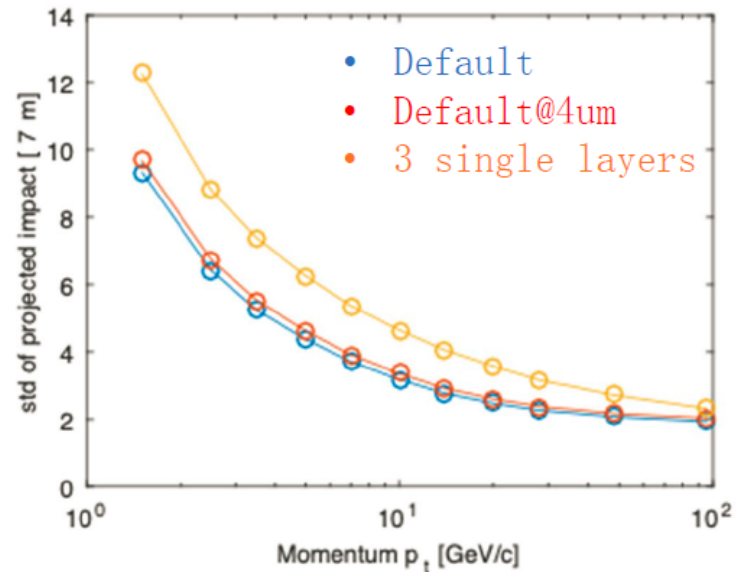


	$R$ (mm)	$ z $ (mm)	$ \cos \theta $	$\sigma$ ( $\mu\text{m}$ )
Layer 1	16	62.5	0.97	2.8
Layer 2	18	62.5	0.96	6
Layer 3	37	125.0	0.96	4
Layer 4	39	125.0	0.95	4
Layer 5	58	125.0	0.91	4
Layer 6	60	125.0	0.90	4

0.267% WITH OVERLAP

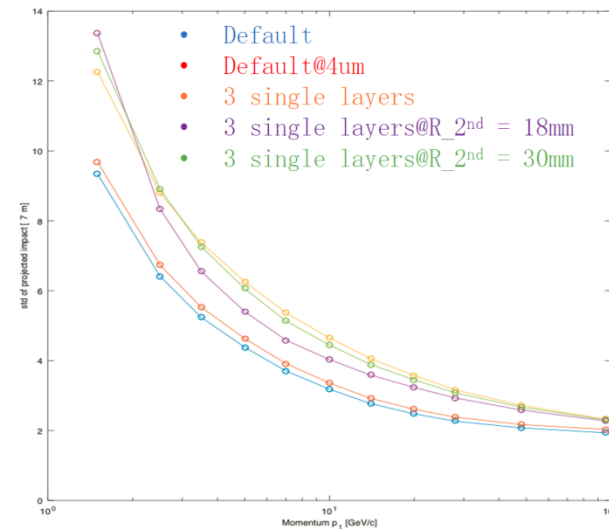
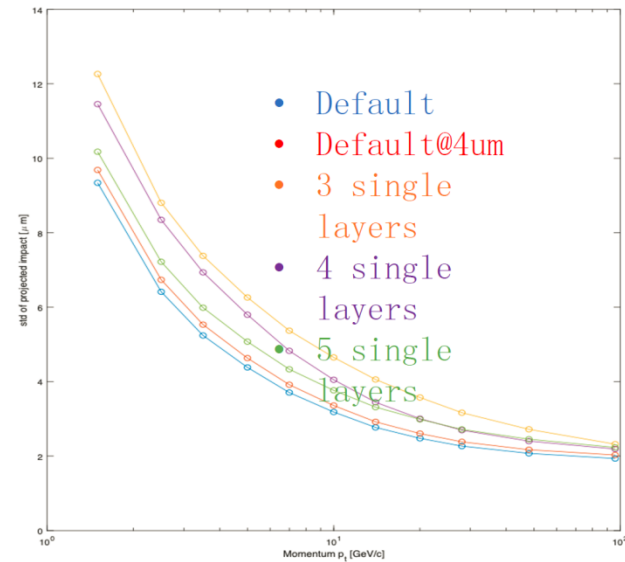


1. Overlap
2. Carbon fiber C structure



# Layout Optimization

- Various layouts were tested
- Some discrepancies need to be understood: multi-scattering, R\_2nd, number of layers, ...
- To be validated with TkLayout and full simulation.



# Recent Collaboration Activity

From late February to late March this year, visited Oxford and Liverpool, learned a lots about silicon detectors .

## Oxford

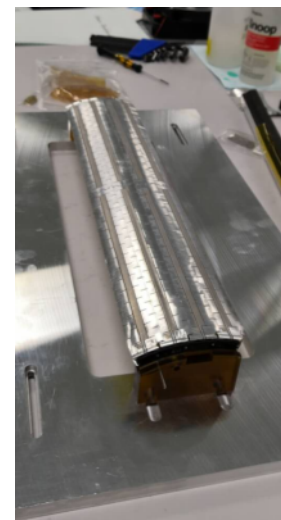
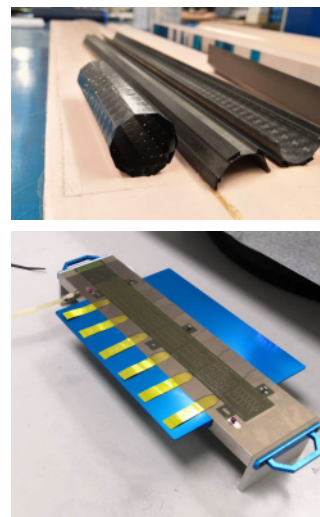
*Mu3e ladder, Atlas barrel strip stave prototype.*



*Thanks Daniela, Ian, Kirk  
Richard, Chris, Georg, Stephanie*

## Liverpool

*Module of Alice' s OB tracker,  
Mu3e unit assembly*

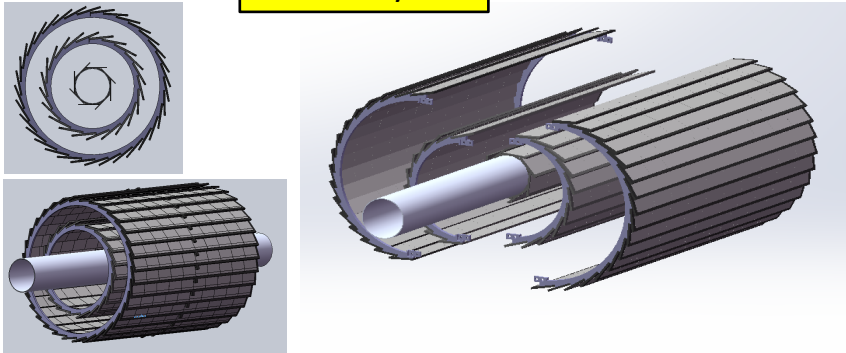


*Thanks Yanyan, Tim, Peter, Joost*

# Conceptual Support Design of the SVXD

**Sensor chip** : 14.8 x 25.6 x 0.05 mm (2 mm wide margin at one side for wire bonding)

Vertex layout



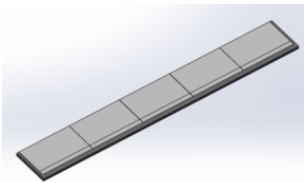
Local support



End Ring (CFRP): fix the end of local support by bolting connection.

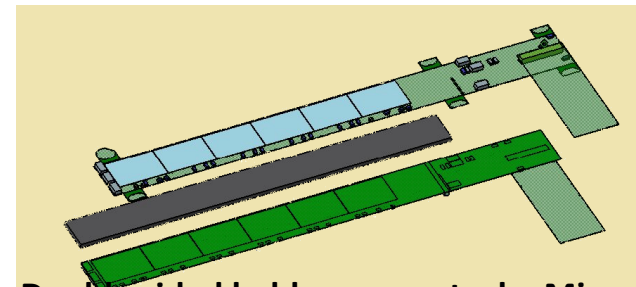
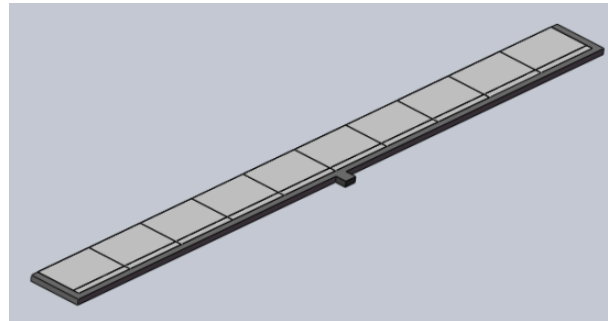
**Ladder**: mechanical structure + chips + FPC

Ladder of inner layer:  
10 chips total including both sides



0.1mm gap between chips

Ladder of outer two layers:  
20 chips total including both sides



Double sided ladder concept – by Mingyi



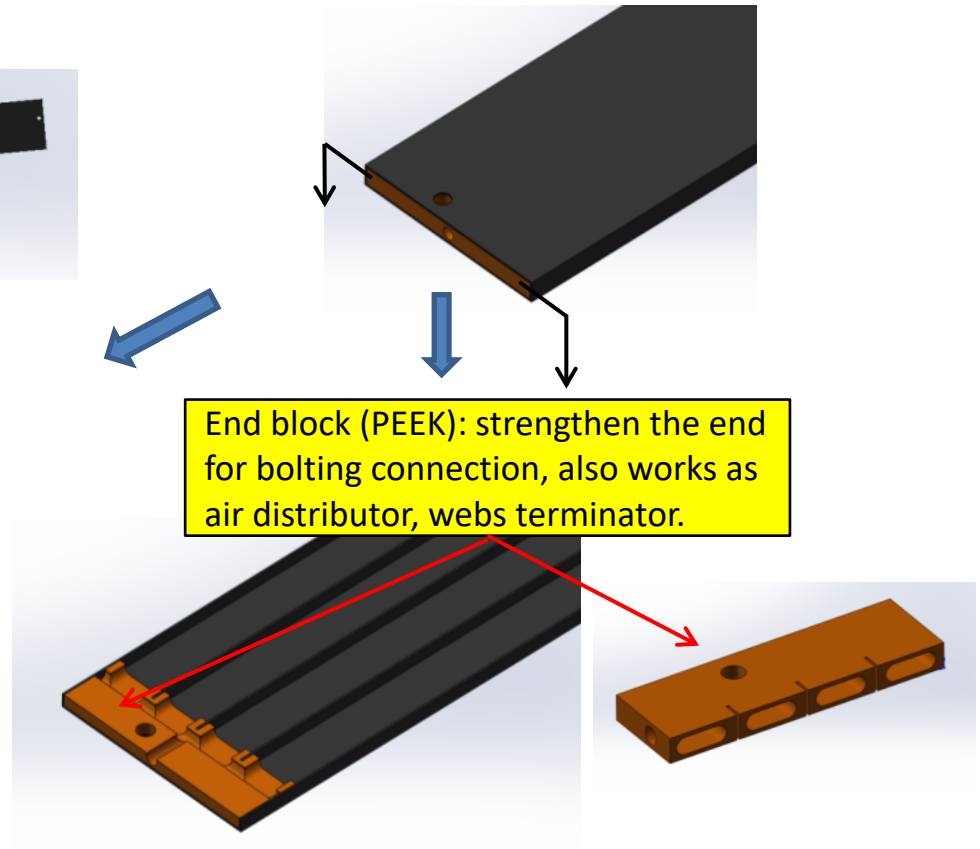
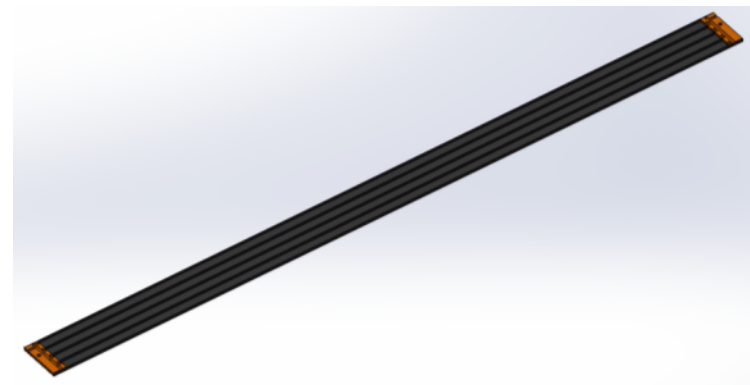
# Ladder Mechanical Structure

**Size:** 263.1 x 16.8 x 1.8 mm (L x W x H), for outer and middle barrels.

130.6 x 16.8 x 1.8 mm for inner barrel. W is 2 mm wider than sensor.

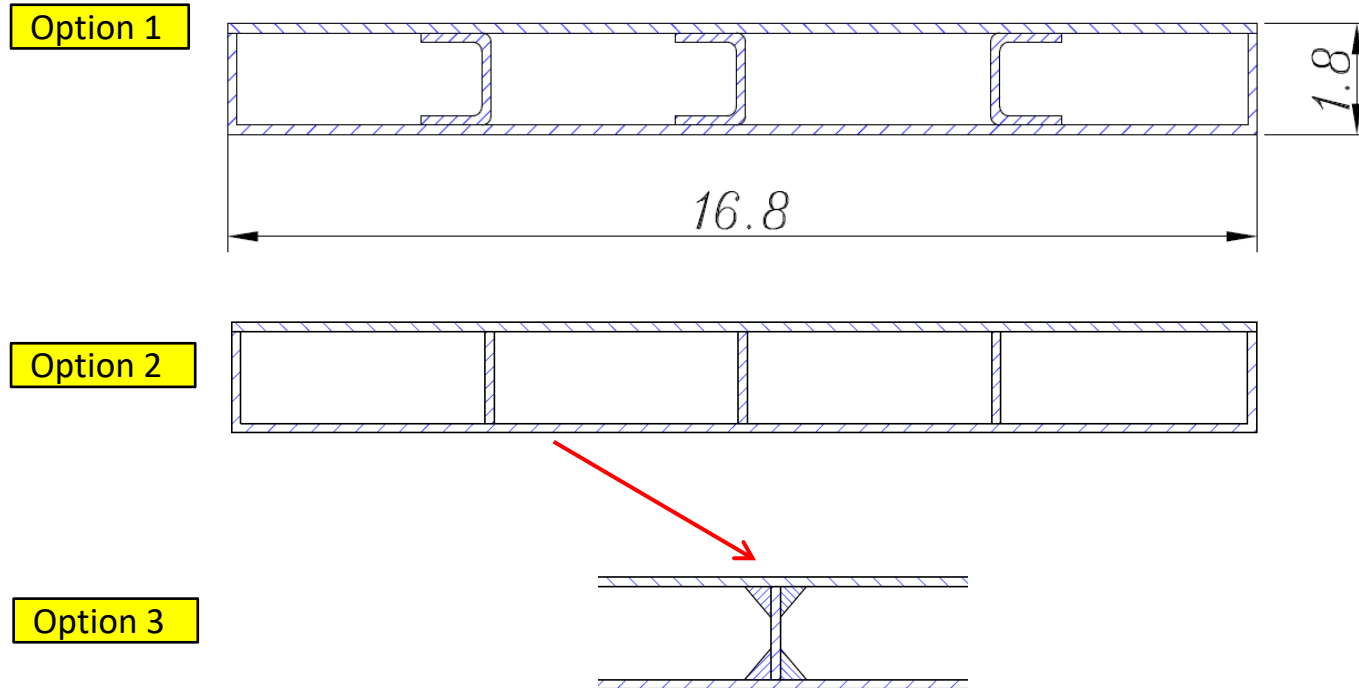
**Material:** Carbon fiber in thickness of 0.15 mm (3 layers 0-90-0).

**Channels inside the local support:** to increase stiffness with less material, also work as a backup for air cooling from inside of the support.



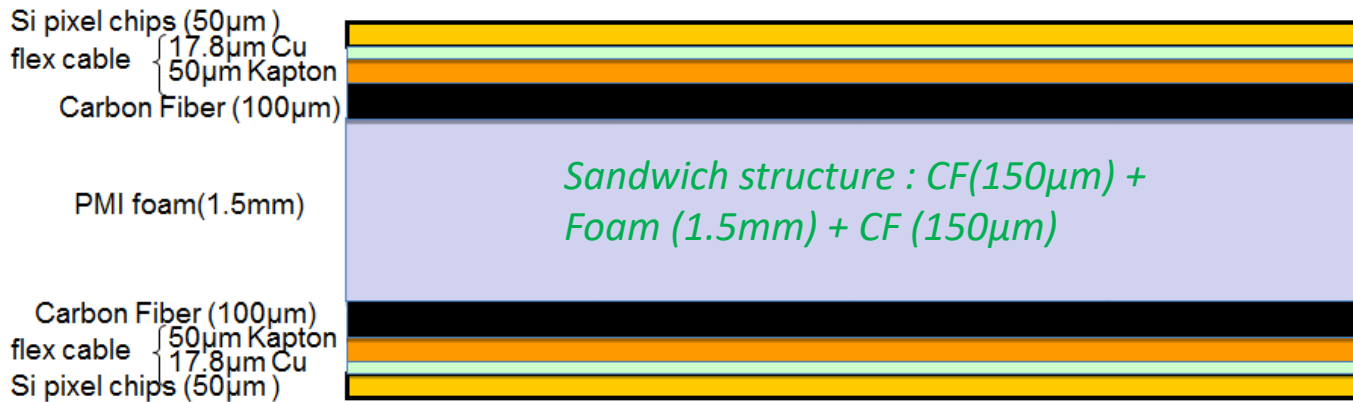
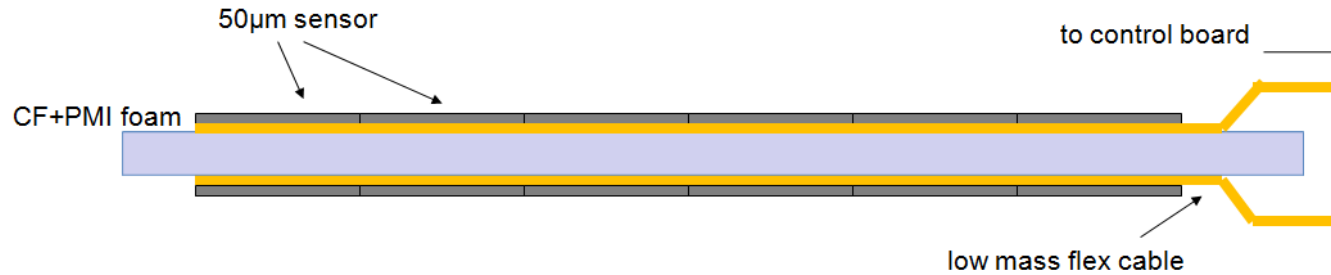
# Ladder Mechanical Structure

To glue webs inside the local support, few options are considered (cross-sectional view of local support):

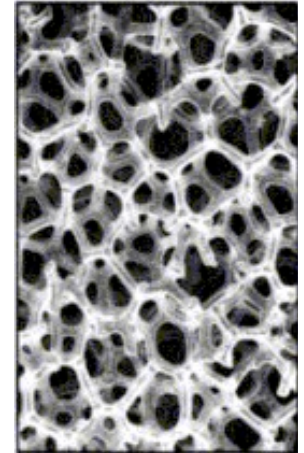


# Ladder Mechanical Structure

- *Mingyi's proposal*



Optional foam with different material for optimization.

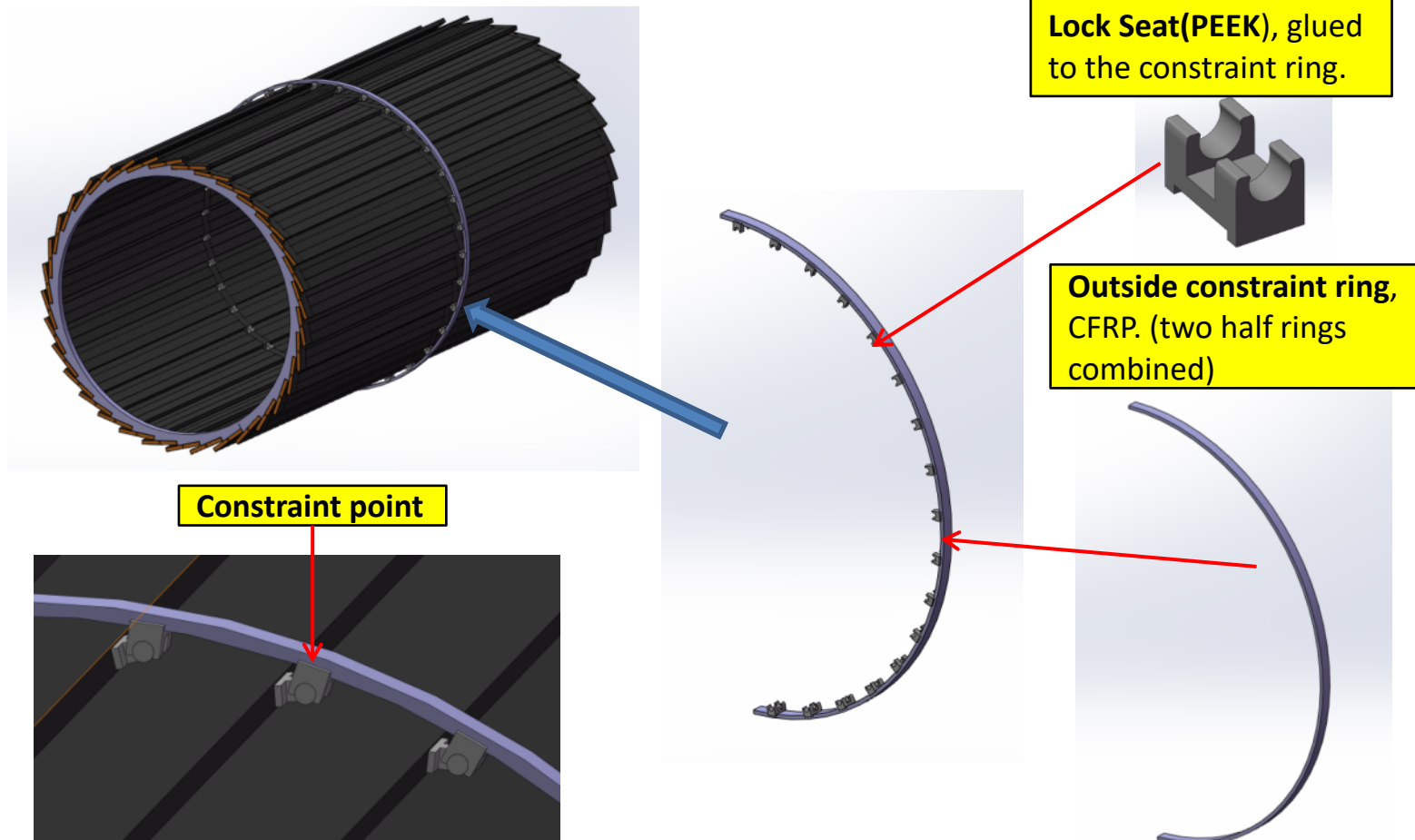


- Material budget: 0.53%  $X_0$  (flex cable with copper traces )
- Reduce to 0.35%  $X_0$  if using aluminum traces.

It can be reduced to 0.48%  $X_0$  with copper traces ( 0.29%  $X_0$  with aluminum trace) after optimization.

# To Increase Stability of Ladder

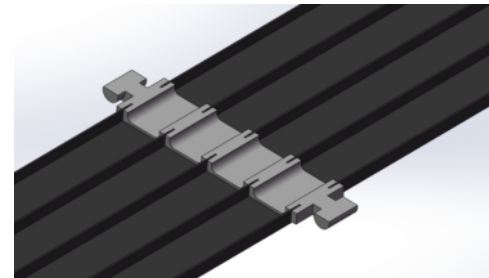
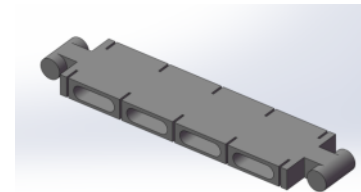
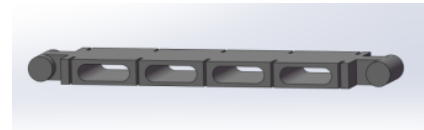
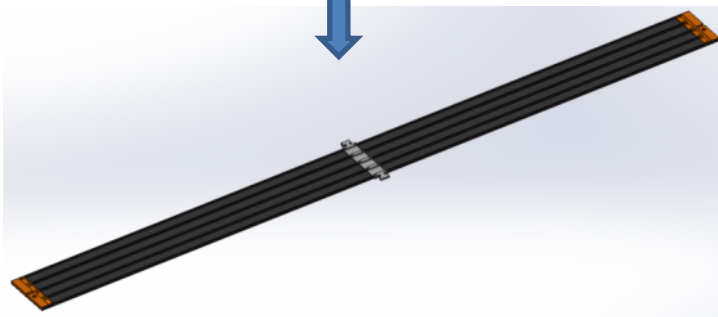
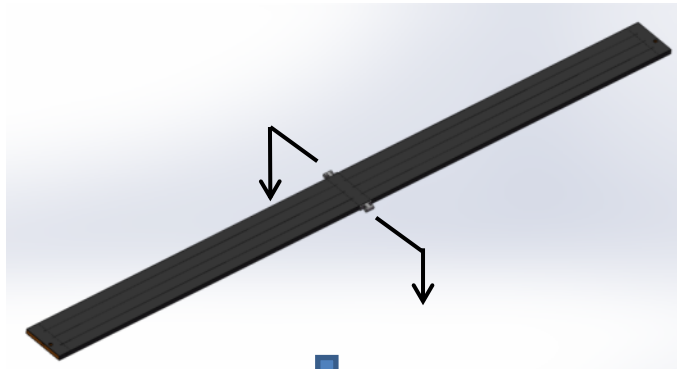
Link each ladder (directly on ladder mechanical structure) in middle to a constraint ring from outside of the barrel. Depends on further analysis or test, if needed, ladders can also be linked to an inside constraint ring. Here just show the outside linking structure which currently is just a backup design.



# To Increase Stability of Ladder

To mate with the lock seat on the constraint rings, a connector is embedded inside the ladder mechanical structure.

**Middle embedded connector (CF 3D printed for prototype):** to generally constraint the ladder at middle, also works as air distributor and web connector locally inside the mechanical structure.

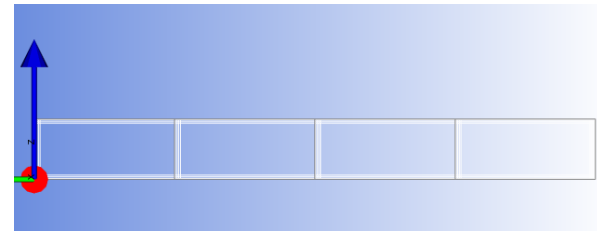


# CFRP Laminates Design and FEA

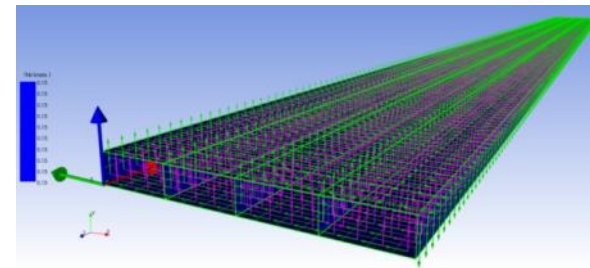
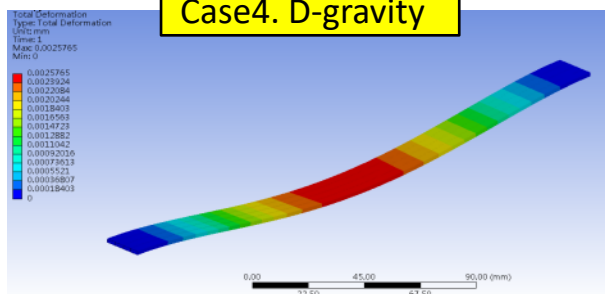
Static FEA analysis of combinations of different laminate layouts of surface and web and ladder support with or without webs have been done. Result show the best combination is: ladder support with webs , surface 3 layer (0 90 0) , web 3 layer (90 0 90) .

FEA Result Summary

N. case	Layers Surface	Layers Web	Weight (g)	D (μm) Gravity	D (μm) Full load
1	3(0 90 0)	3(0 90 0)	2.36	4.392	4.949
2	3(0 90 0)	NO	2.03	7.091	
3	3(0 90 0)	4(0 90 90 0)	2.54	2.577	5.049
4	3(0 90 0)	3(90 0 90)	2.36	2.555	5.18
5	4(0 90 90 0)	4(0 90 90 0)	3.14	3.296	5.835
6	4(0 90 90 0)	NO	2.7	3.952	7.478



Case4. D-gravity

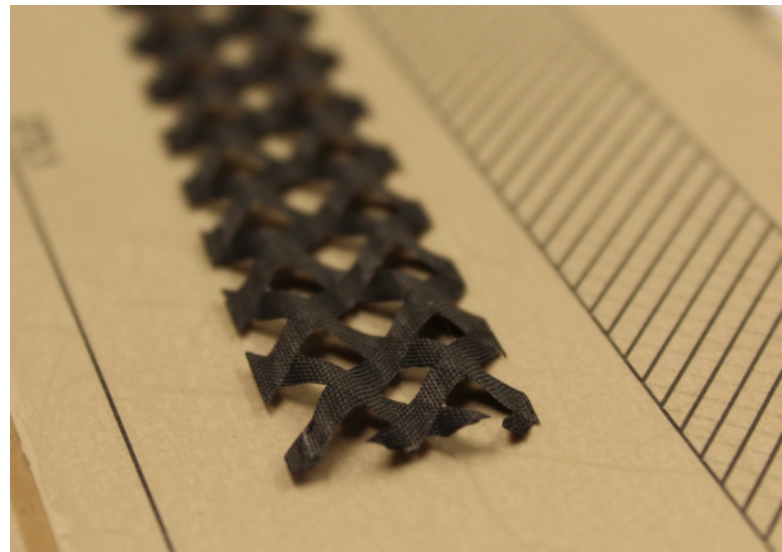
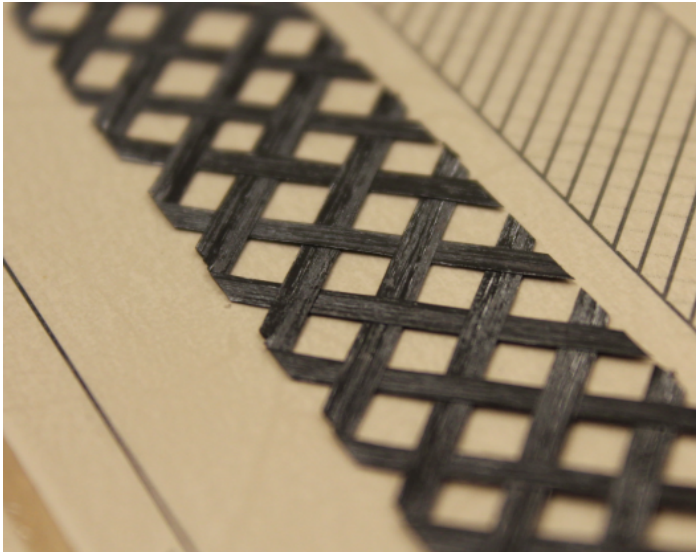


# Prototype Part from Liverpool

Recently, Liverpool provided a different option for the ladder structure reinforcement.

*To optimize the inside reinforced structure, we need:*

- *more work on structure optimization*
- *produce samples*
- *test for evaluation.*

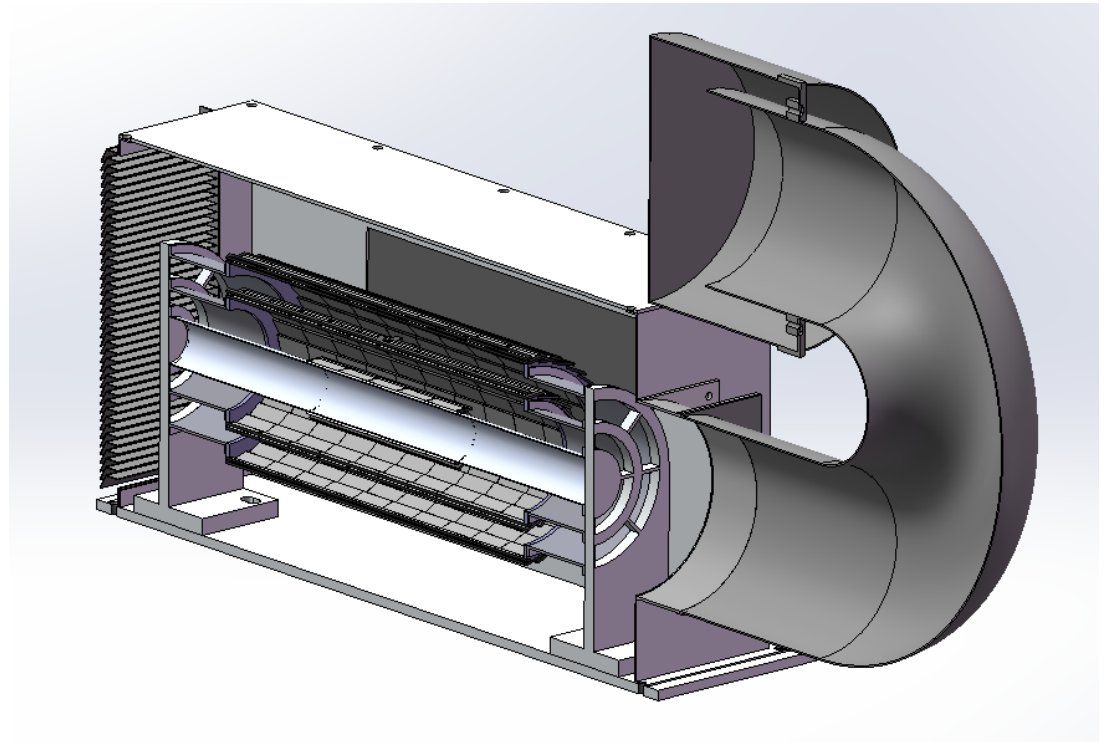
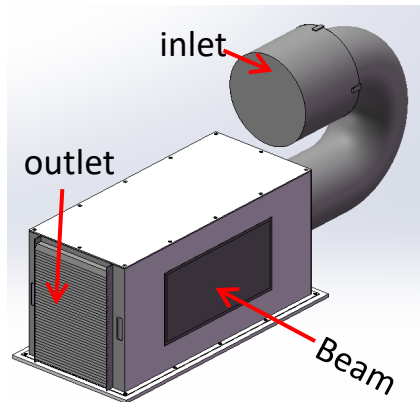


# Beam test: detector supporting and cooling box

The box is air cooled and light tight.

Application:

- Assembly of the support structure of SVXD prototype and testing.
- Final beam line testing SVXD





# Short Term Plan

By the end of this year:

- Optimization of the structure design and more FEA analysis of material and structure.
- Investigate the: material, curing equipment, testing equipment, manufactures.
- Composite material sample procurement and performance test.
- Trial-manufacture of composite laminates and performance test.
- Fast/full simulation will be continued for layout optimization and expected to be finished by the end of this year.

Thanks