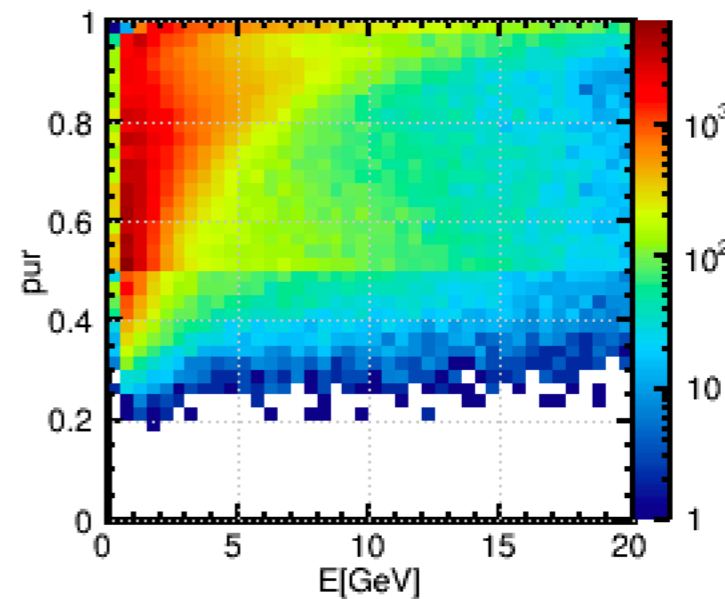
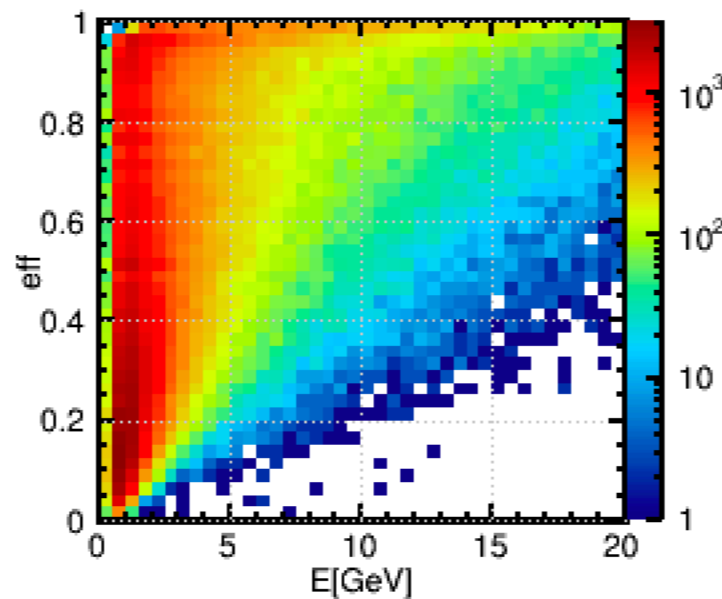
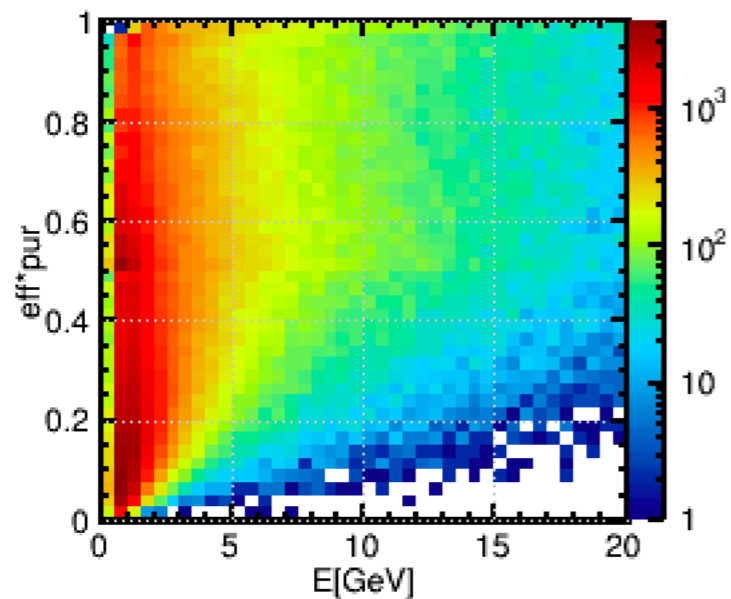
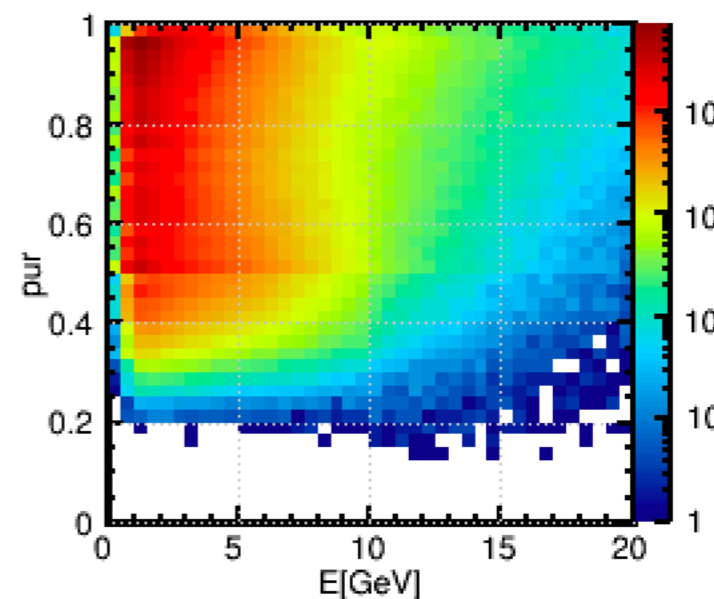
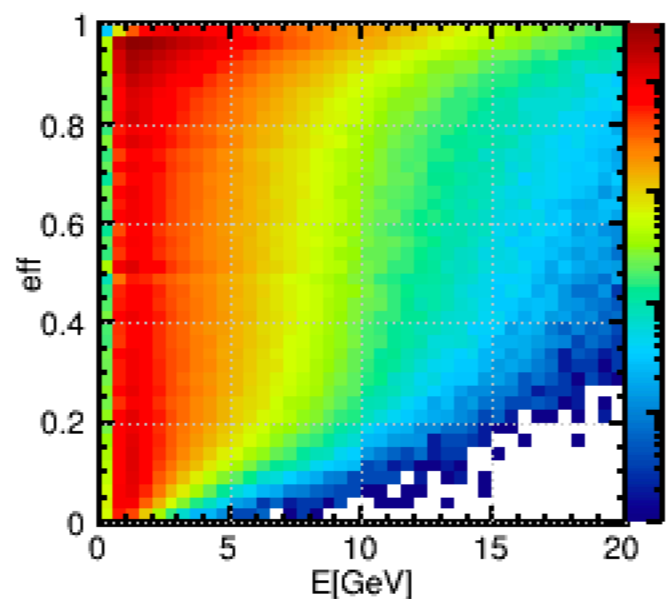
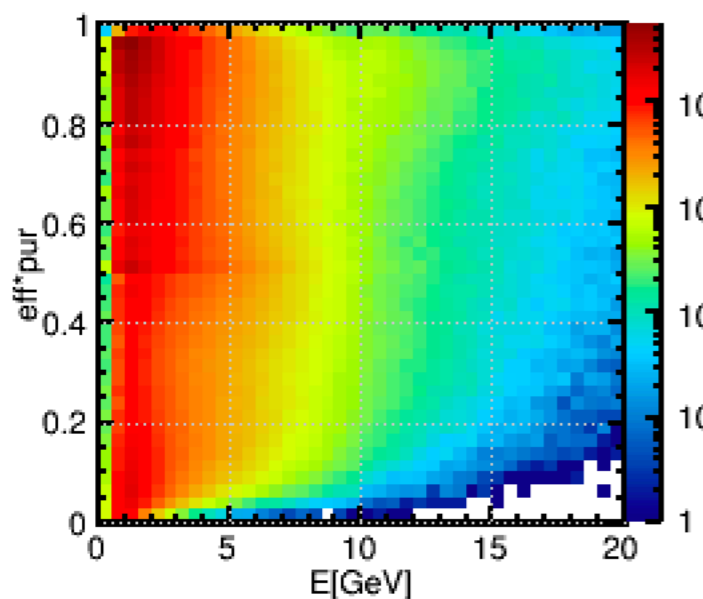
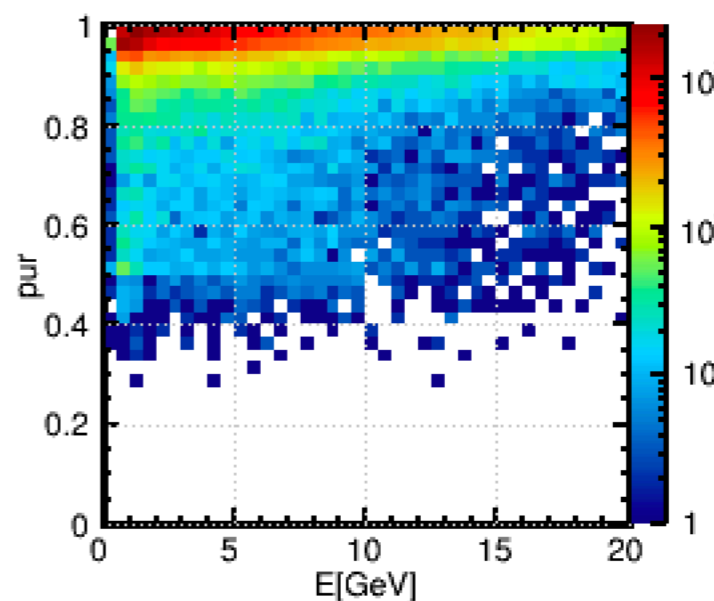
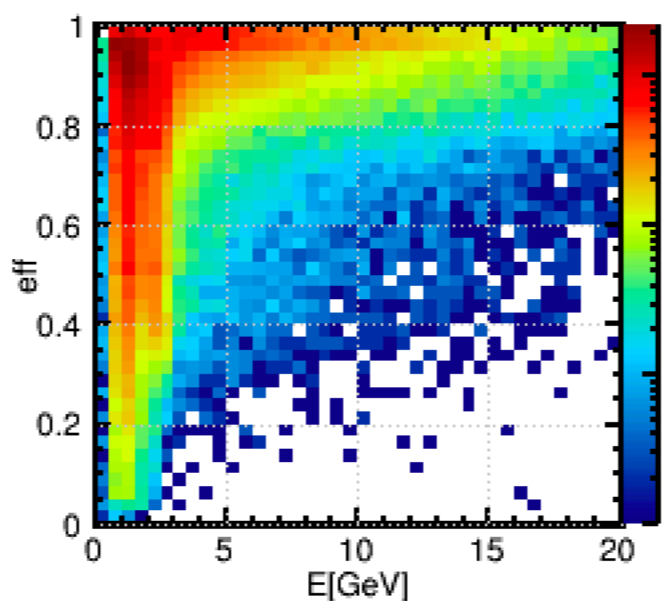
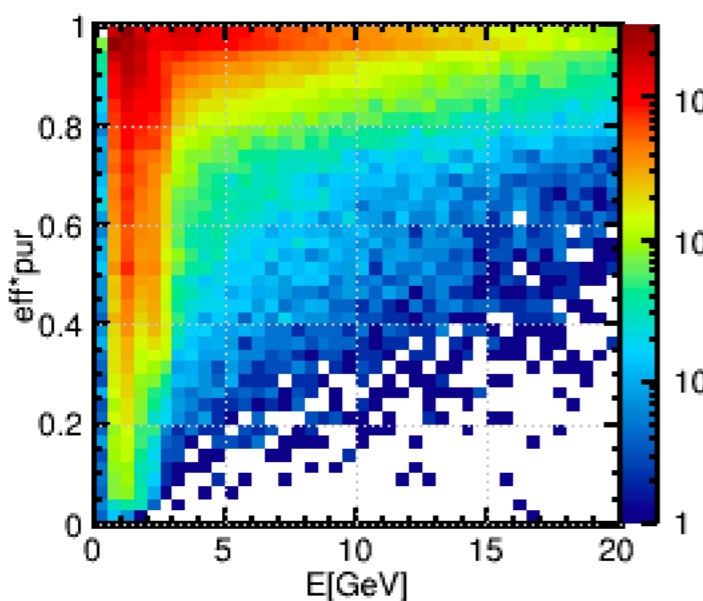


CEPC Remote Group Meeting

Dan YU

eff*pur**eff****pur****e****peak at
0.5****eff*pur****eff****pur****pi****eff*pur****eff****pur****mu**

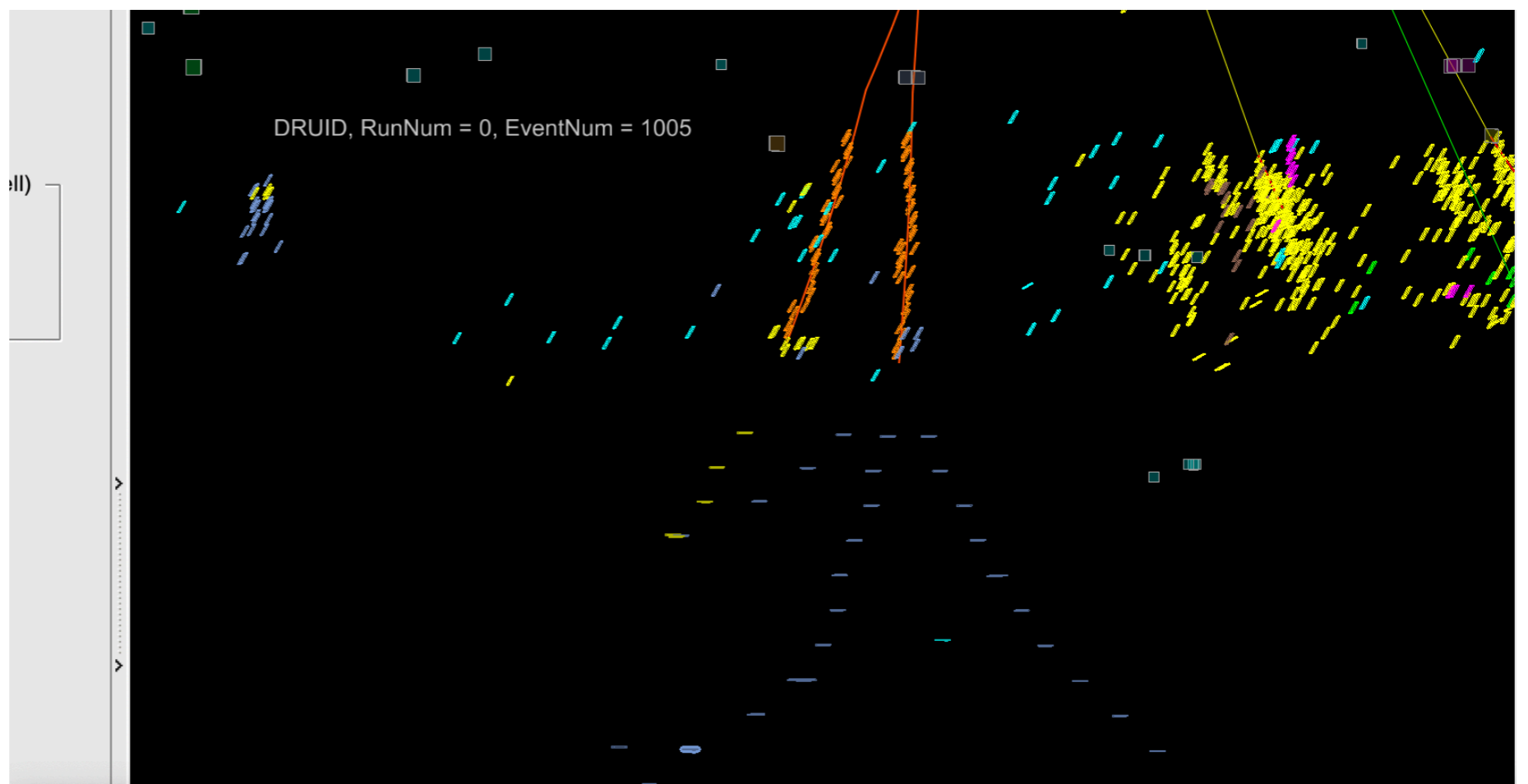
```

14th hit 0th cont with en:0.0168168 -11 0 22 0 -11 0 22 0 11 0 22 0 111 0 223 0 215 0 443 0 20443 0 -511 0 -513 0 92 0 5 0 5 0 5 0 5 0 94 0 5 0 5 0
14th hit 1th cont with en:0.0168168 -11 0 22 0 -11 0 22 0 11 0 22 0 111 0 223 0 215 0 443 0 20443 0 -511 0 -513 0 92 0 5 0 5 0 5 0 5 0 94 0 5 0 5 0
14th hit 2th cont with en:0.0168168 -11 0 22 0 -11 0 22 0 11 0 22 0 111 0 223 0 215 0 443 0 20443 0 -511 0 -513 0 92 0 5 0 5 0 5 0 5 0 94 0 5 0 5 0

```

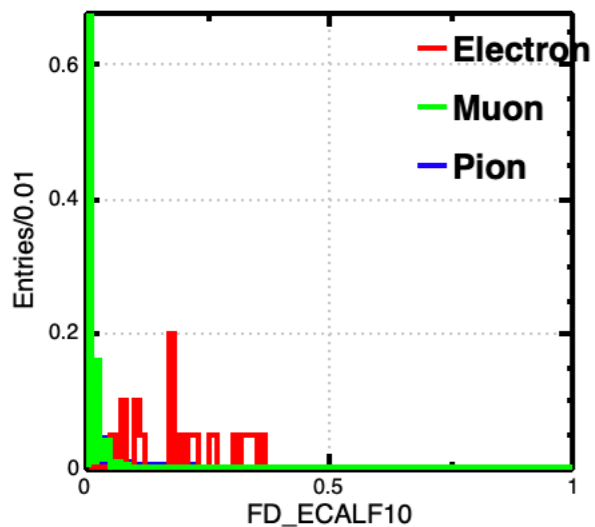
[00015ee9]	49	20443	7.45e+00,-1.62e+01, 6.47e+00	1.93e+01	2 [0]		1.44e+00,-3.62e+00, 1.65e+00	1.44e+00,-3.62e+00, 1.65e+00	3.51e+00 -1.00e+03	0.00e+00, 0.00e+00, 0.00e+00	(0, 0)	
[35]	-	[67,68]											
[00015efb]	67	443	5.81e+00,-1.32e+01, 5.41e+00	1.57e+01	2 [0]		1.44e+00,-3.62e+00, 1.65e+00	1.44e+00,-3.62e+00, 1.65e+00	3.10e+00	0.00e+00, 0.00e+00, 0.00e+00	(0, 0)	
[49]	-	[80,81]											
[00015f08]	80	215	4.24e+00,-1.05e+01, 5.13e+00	1.25e+01	2 [0]		1.44e+00,-3.62e+00, 1.65e+00	1.44e+00,-3.62e+00, 1.65e+00	1.30e+00	1.00e+00	0.00e+00, 0.00e+00, 0.00e+00	(0, 0)
[67]	-	[91,92,93]											
[00015f13]	91	223	2.25e+00,-4.90e+00, 2.39e+00	5.95e+00	2 [0]		1.44e+00,-3.62e+00, 1.65e+00	0.00e+00, 0.00e+00, 0.00e+00	7.84e-01	0.00e+00	0.00e+00, 0.00e+00, 0.00e+00	(0, 0)
[80]	-	[100,101,102]											
[00015f14]	92	211	1.18e+00,-3.35e+00, 1.63e+00	3.91e+00	1 [v c s]		1.44e+00,-3.62e+00, 1.65e+00	1.62e+02,-2.02e+03, 9.41e+02	1.40e-01	1.00e+00	0.00e+00, 0.00e+00, 0.00e+00	(0, 0)
[80]	-	[0]											
[00015f15]	93	111	8.12e-01,-2.21e+00, 1.11e+00	2.61e+00	2 [vt]		1.44e+00,-3.62e+00, 1.65e+00	1.44e+00,-3.62e+00, 1.65e+00	1.35e-01	0.00e+00	0.00e+00, 0.00e+00, 0.00e+00	(0, 0)
[80]	-	[103,104]											
[00015f1c]	100	211	9.42e-01,-1.49e+00, 8.05e-01	1.94e+00	1 [v c s]		1.44e+00,-3.62e+00, 1.65e+00	7.11e+01,-2.01e+03, 9.63e+02	1.40e-01	1.00e+00	0.00e+00, 0.00e+00, 0.00e+00	(0, 0)
[91]	-	[0]											
[00015f1d]	101	-211	1.10e+00,-2.55e+00, 1.12e+00	3.00e+00	1 [v c s]		1.44e+00,-3.62e+00, 1.65e+00	1.33e+03,-1.48e+03, 8.17e+02	1.40e-01 -1.00e+00	0.00e+00, 0.00e+00, 0.00e+00	(0, 0)	
[91]	-	[0,0,0,0]											
[00015f1e]	102	111	2.08e-01,-8.64e-01, 4.65e-01	1.01e+00	2 [vt]		1.44e+00,-3.62e+00, 1.65e+00	1.44e+00,-3.62e+00, 1.65e+00	1.35e-01	0.00e+00	0.00e+00, 0.00e+00, 0.00e+00	(0, 0)
[91]	-	[107,108]											

a hit with 3 contributions cannot trace back to Pion

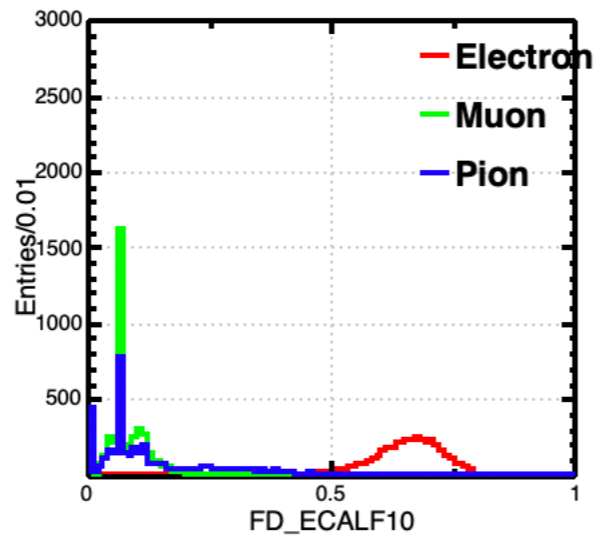


Simulated Calo Hits HcalBarrelCollection
 EventNum=1005, SubDetector=HcalBarrelCollection
 Hit Energy = 7.968e-01 keV ~ 7.968e-04 Mip, Thresh = 0e+00 keV
 MCPID = -11, MCenergy = 0.017
 OriginPID = 5, OriginEnergy = 45.600
 PosX = -19.152 mm, PosY = -2321.500 mm, PosZ = 1047.200 mm, StaveNum = 4, LayerNum = 9, IndexI = 56, IndexJ = 56, Originindex = 9, Hit

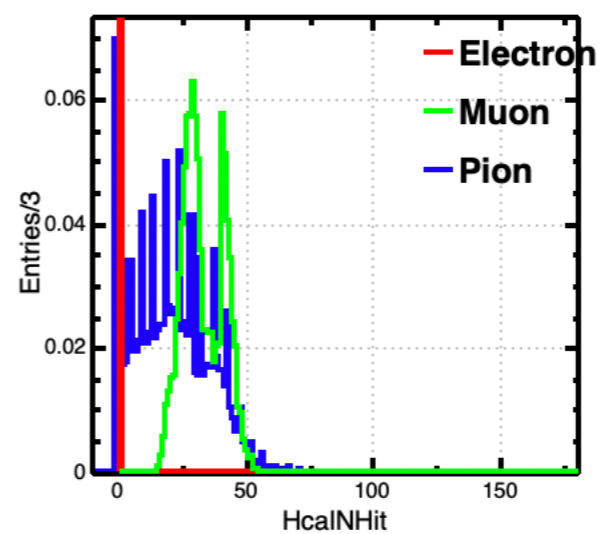
Jet(wrong id)



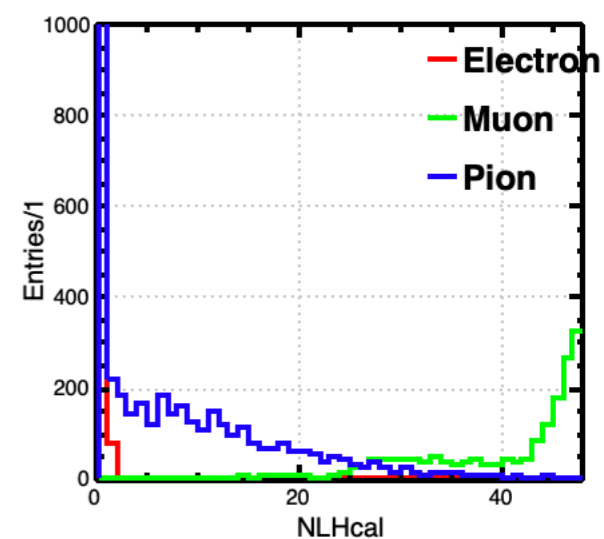
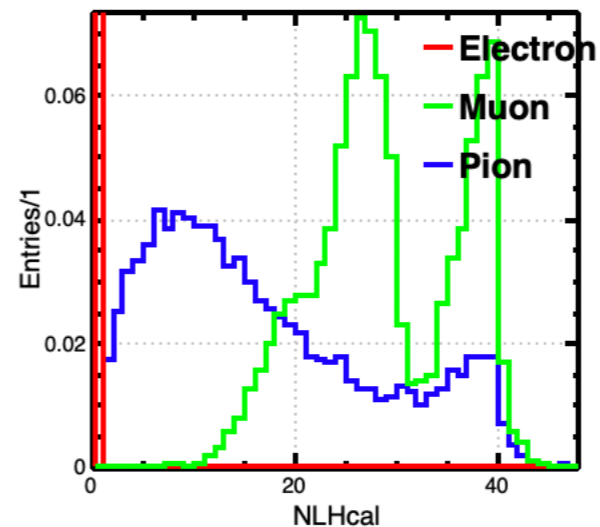
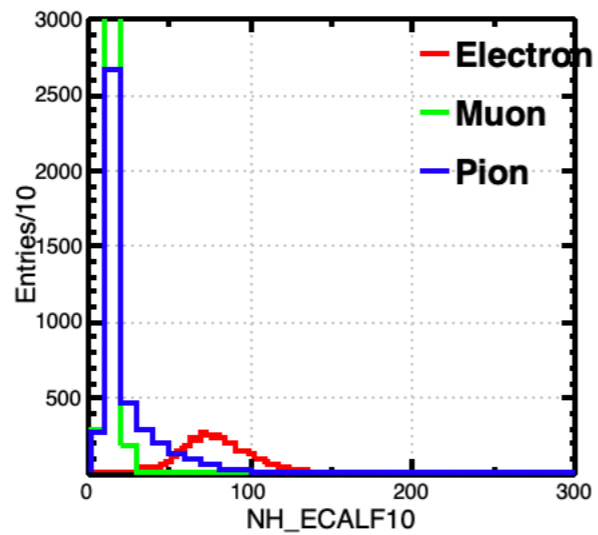
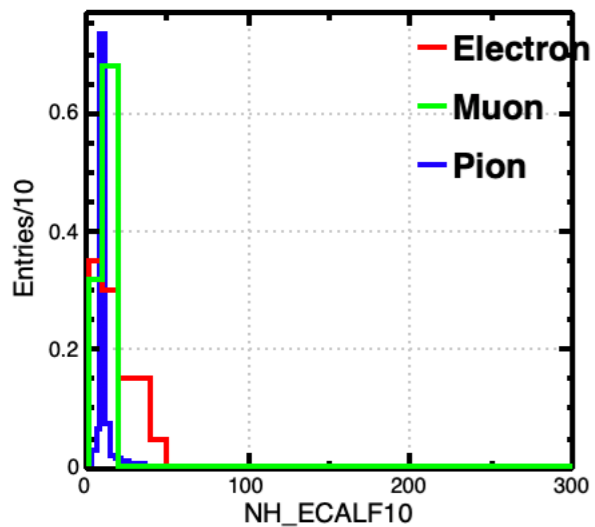
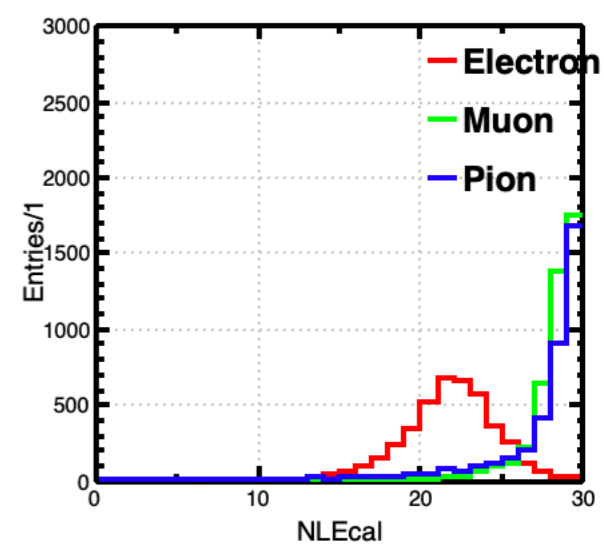
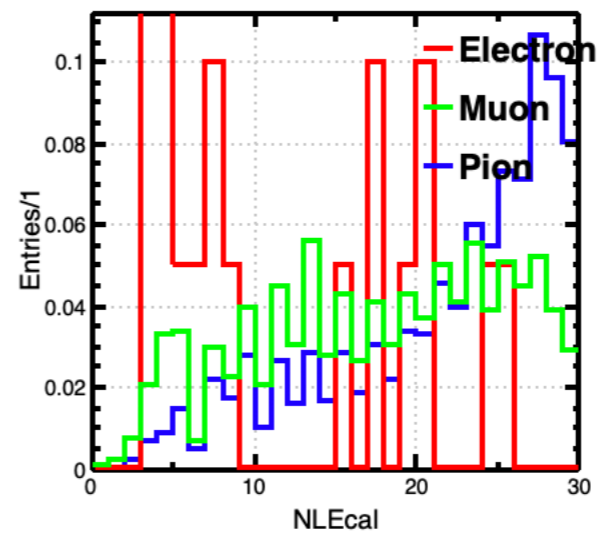
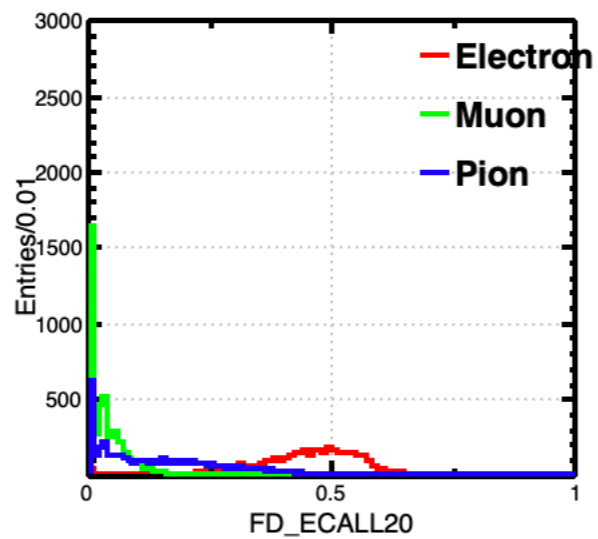
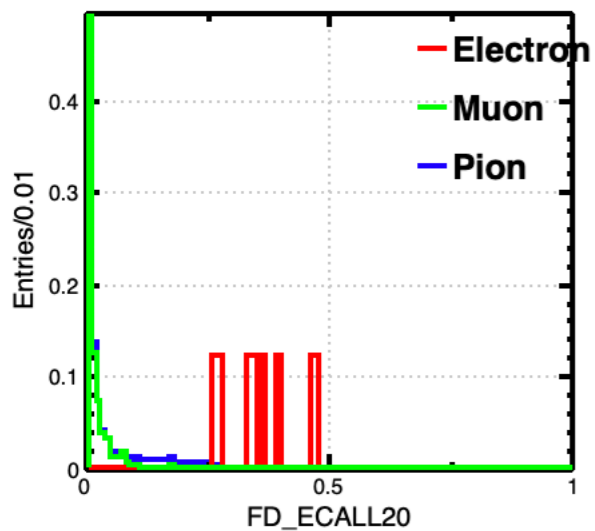
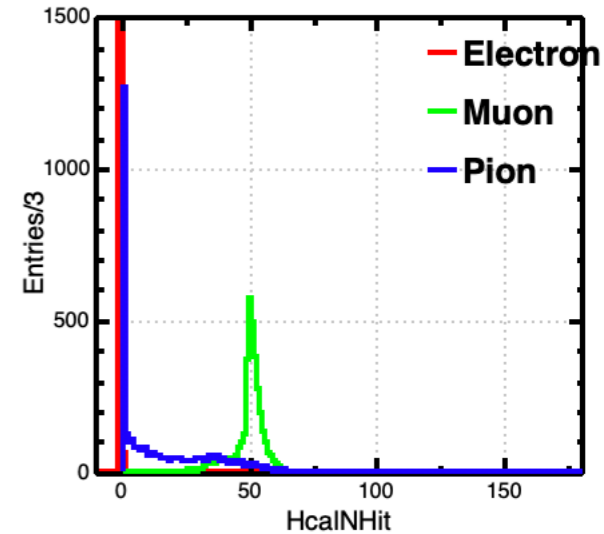
Single



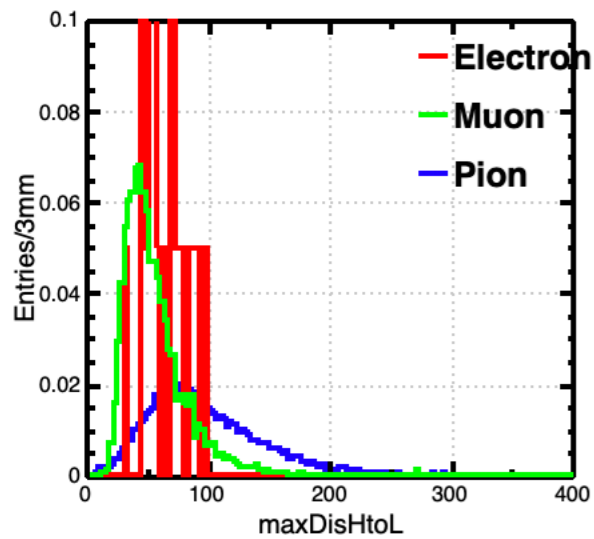
Jet(wrong id)



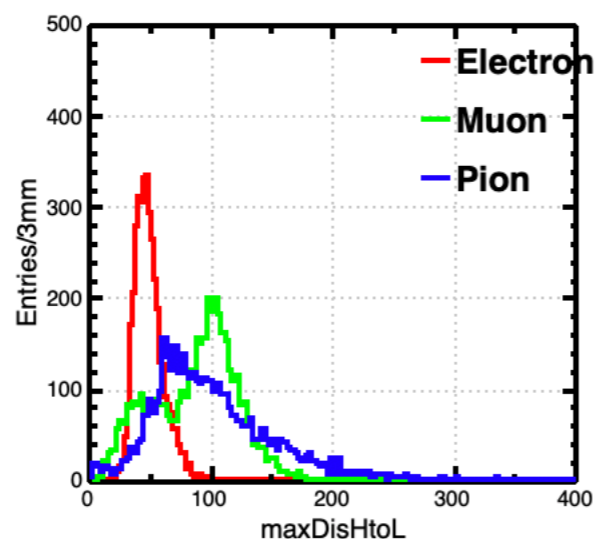
Single



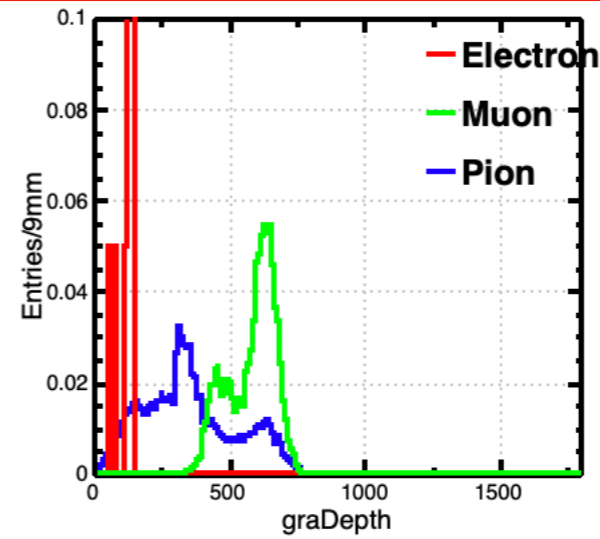
Jet(wrong id)



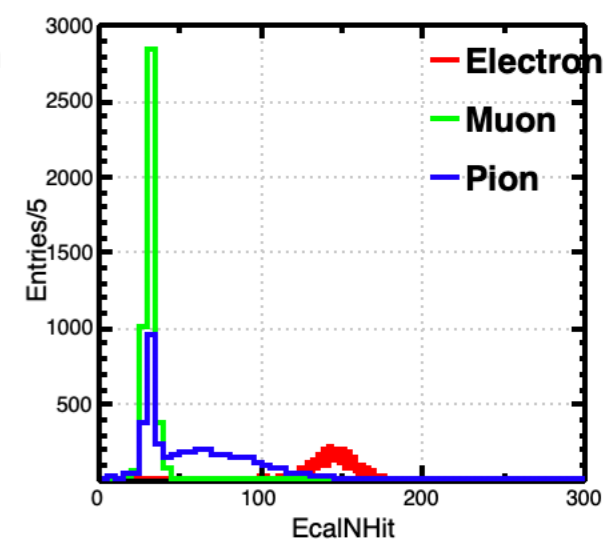
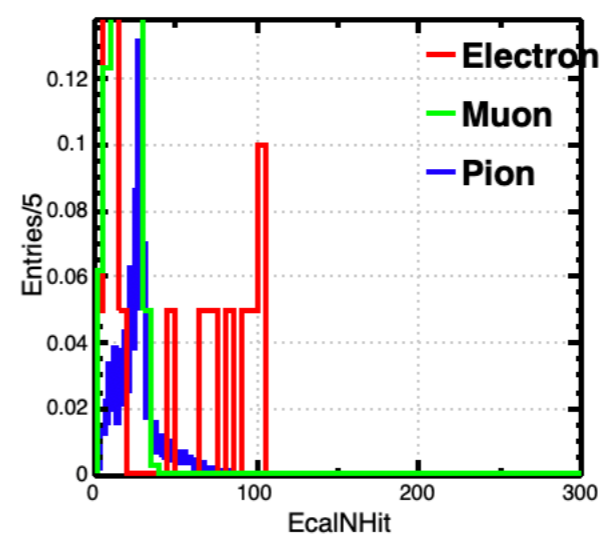
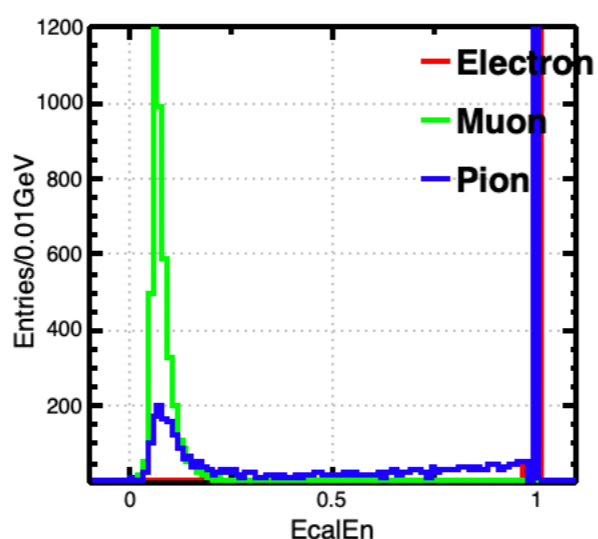
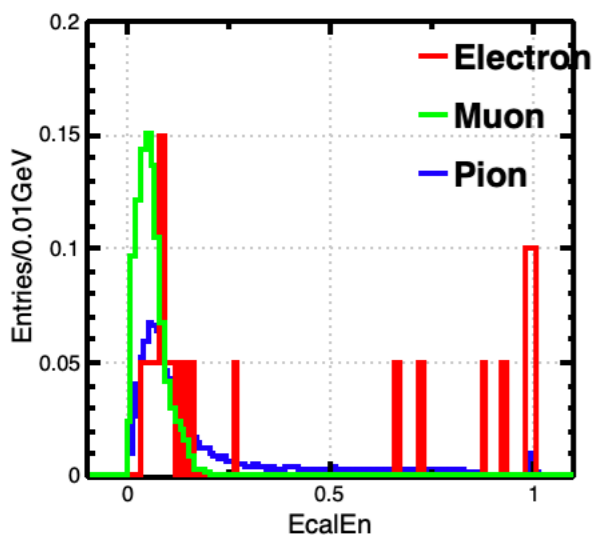
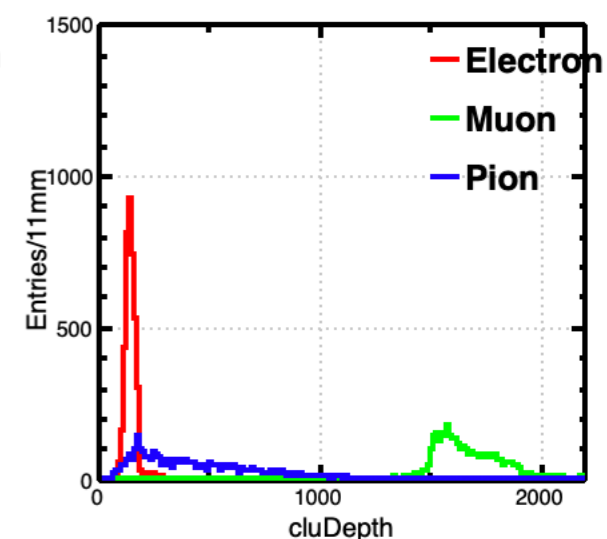
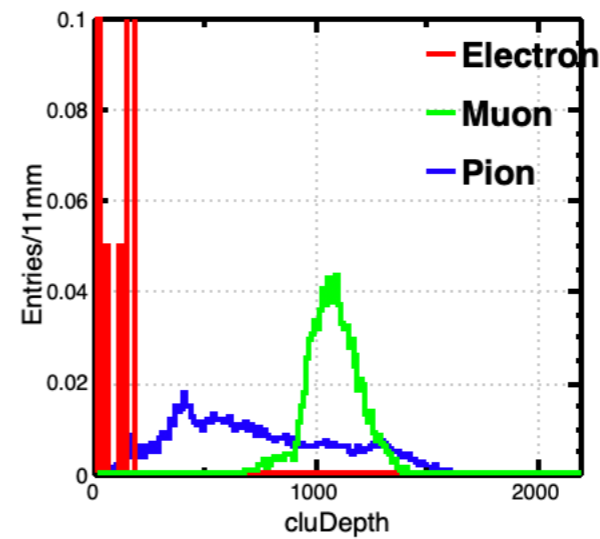
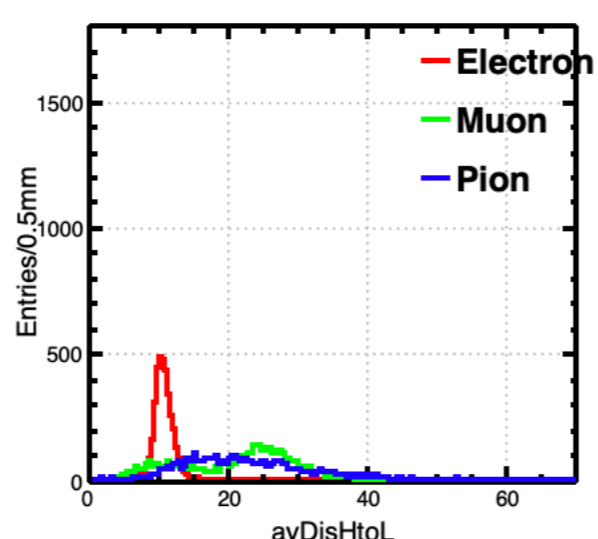
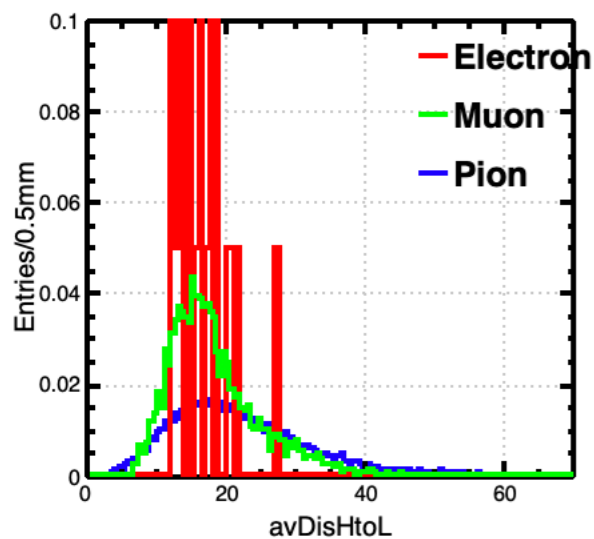
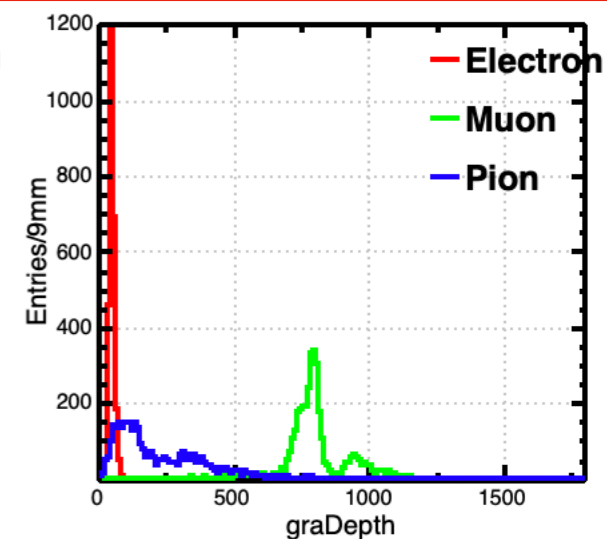
Single



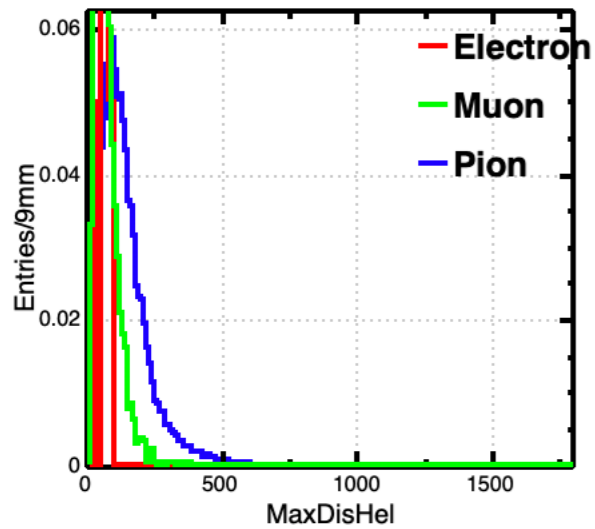
Jet(wrong id)



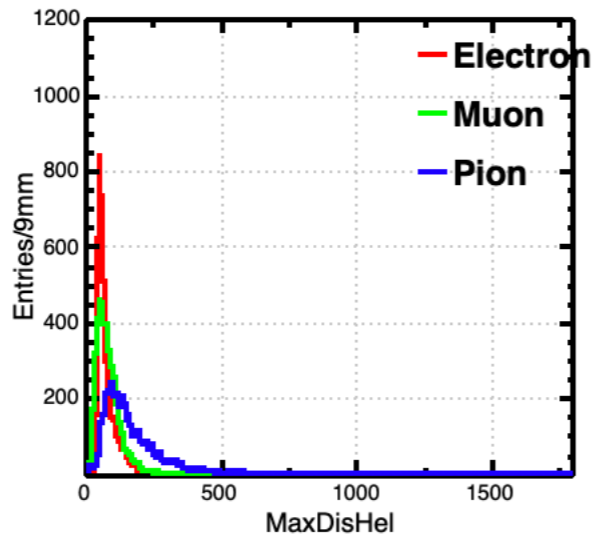
Single



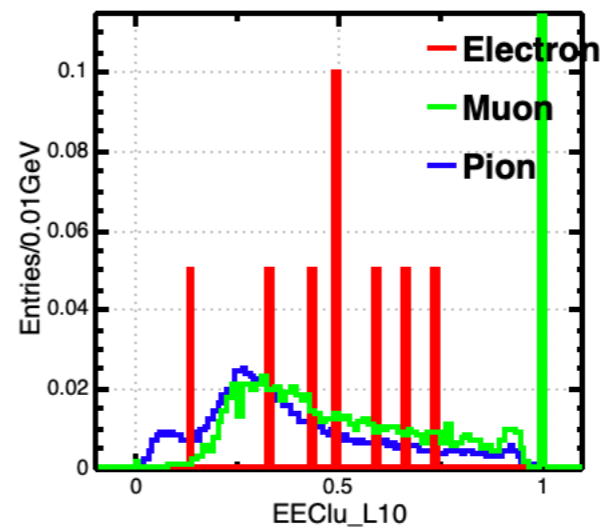
Jet(wrong id)



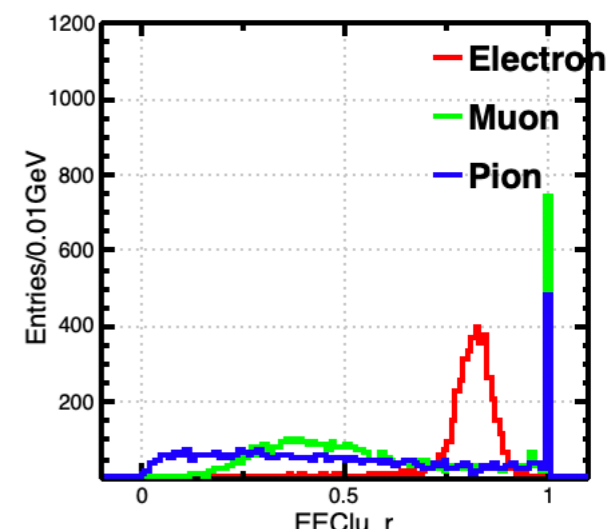
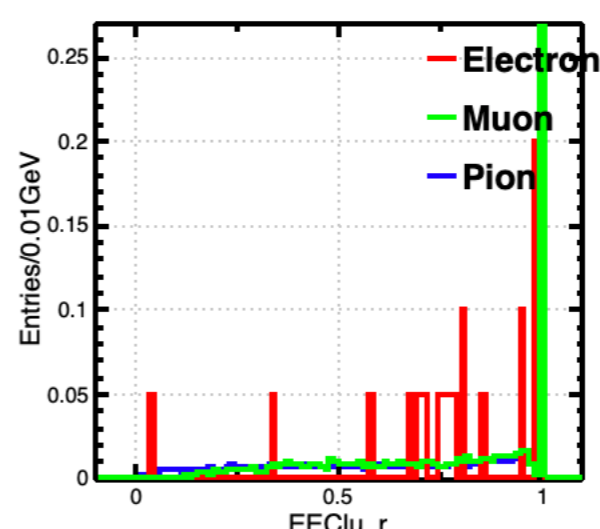
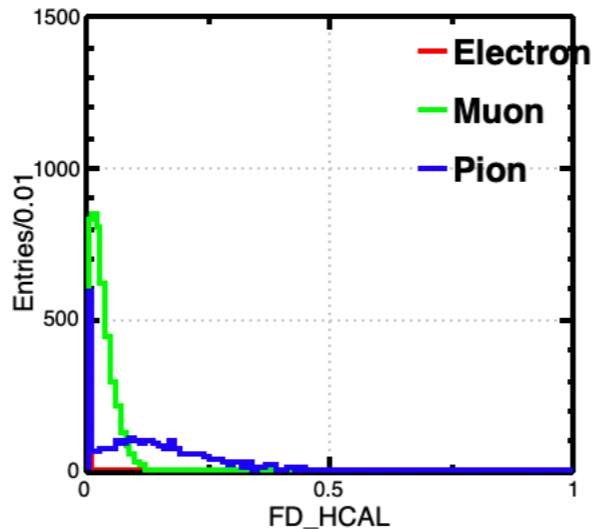
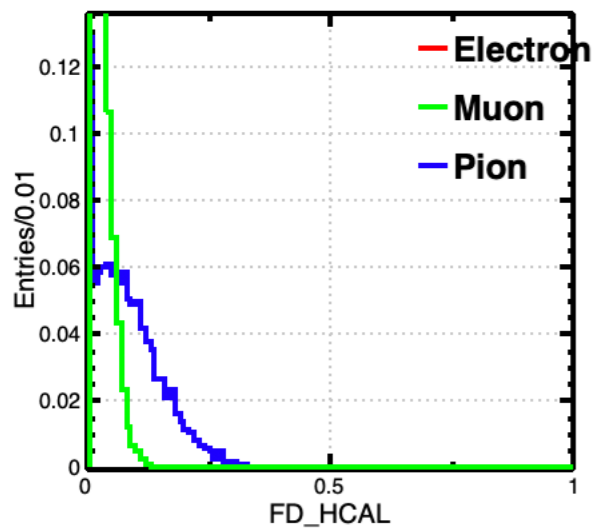
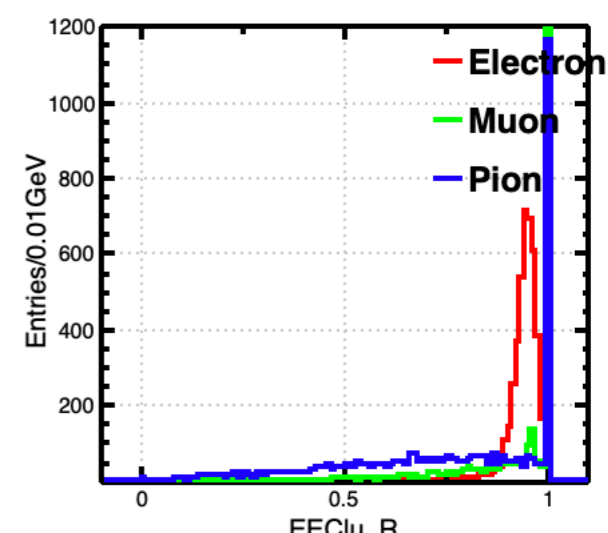
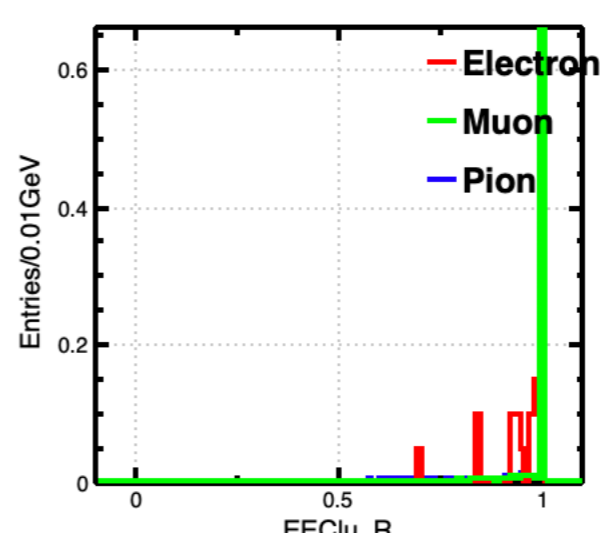
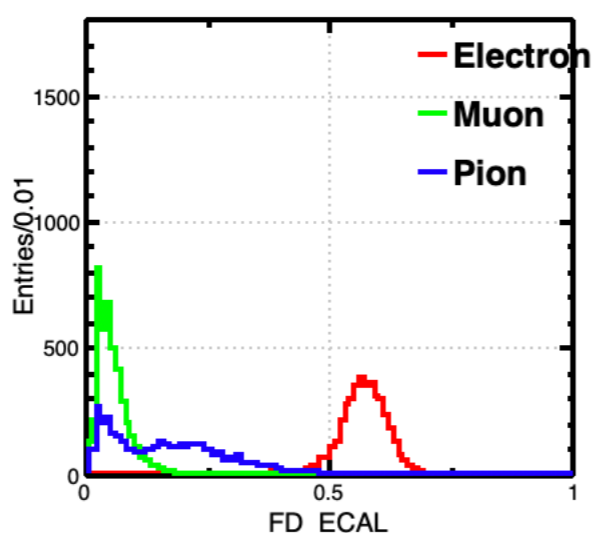
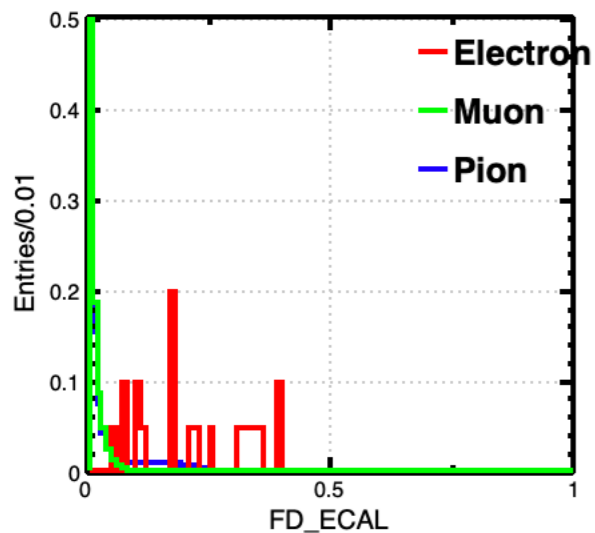
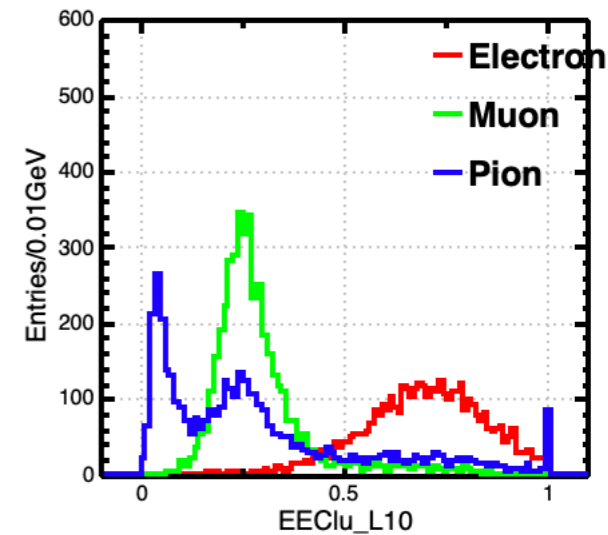
Single



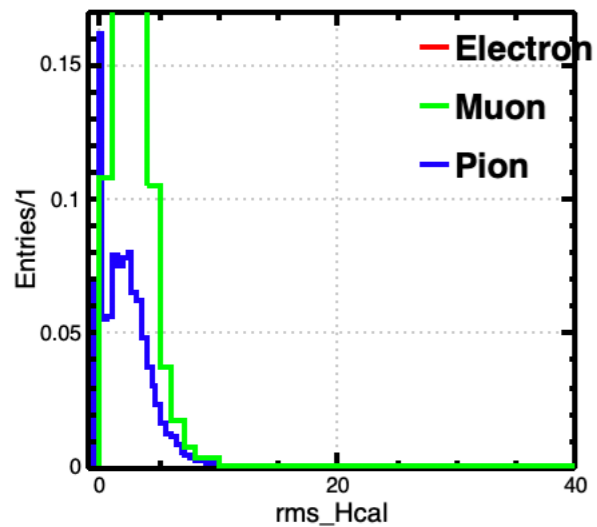
Jet(wrong id)



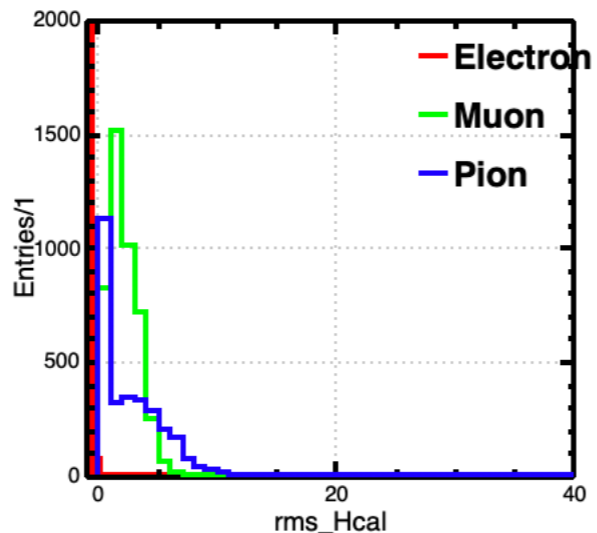
Single



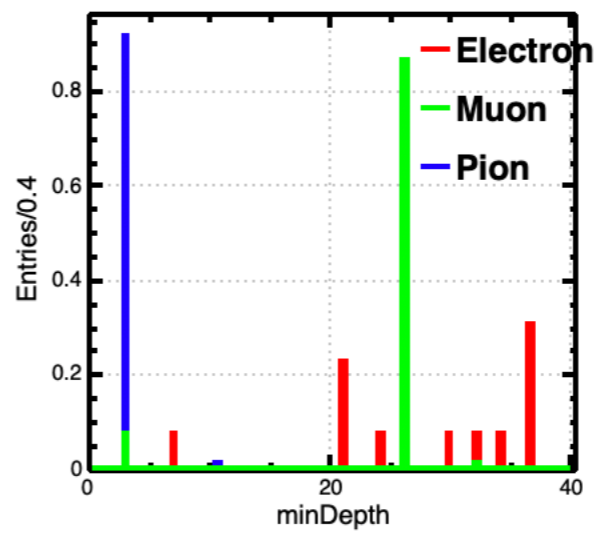
Jet(wrong id)



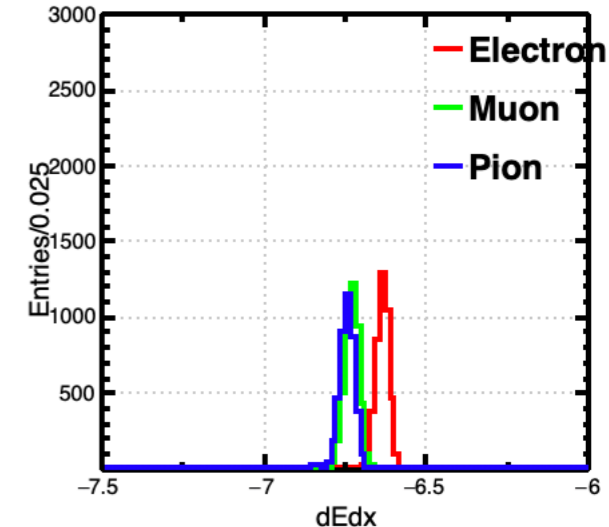
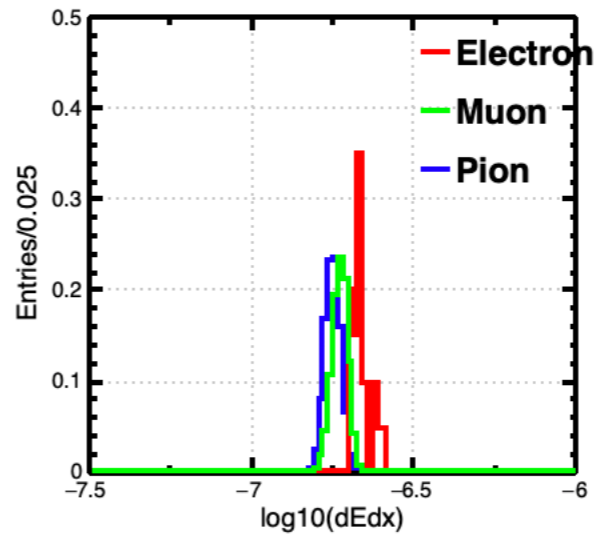
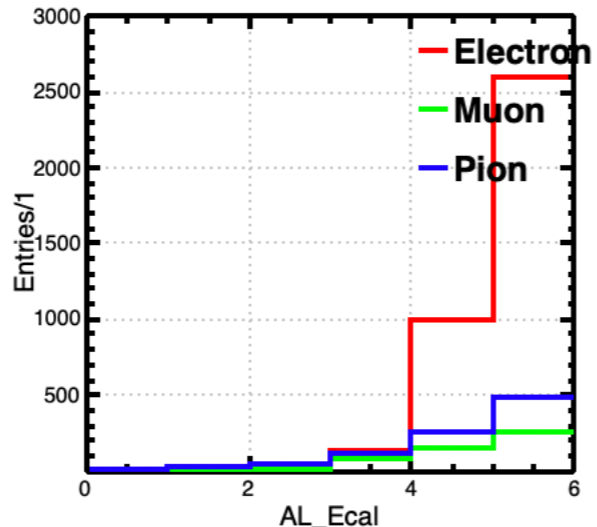
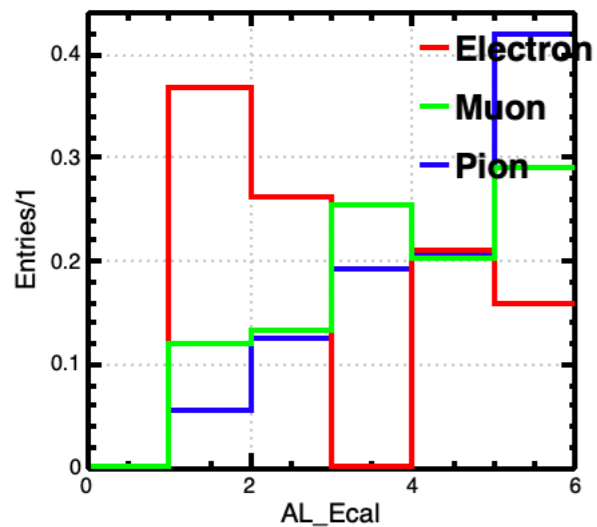
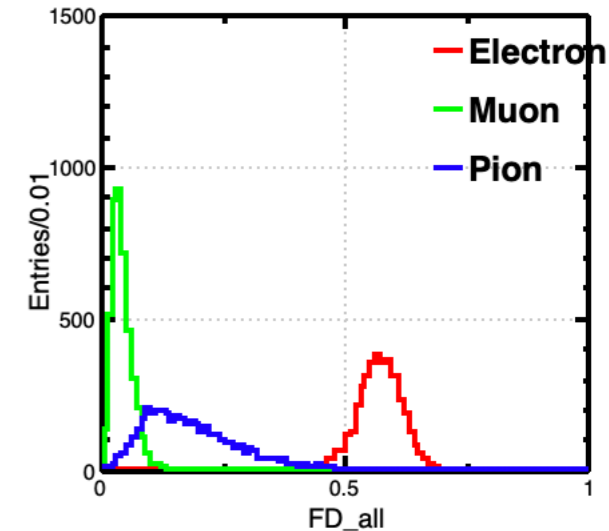
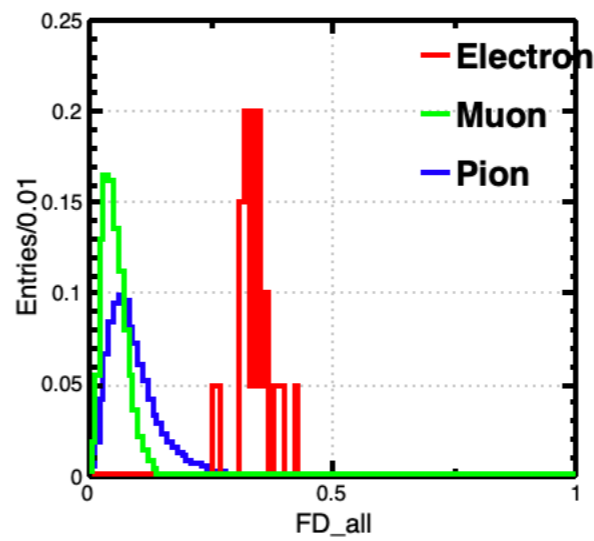
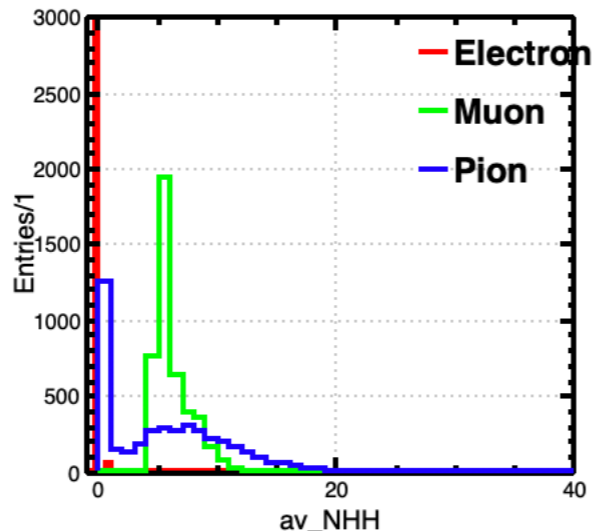
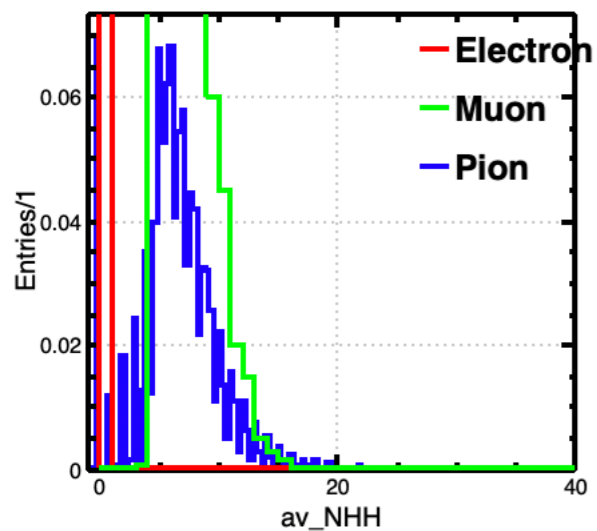
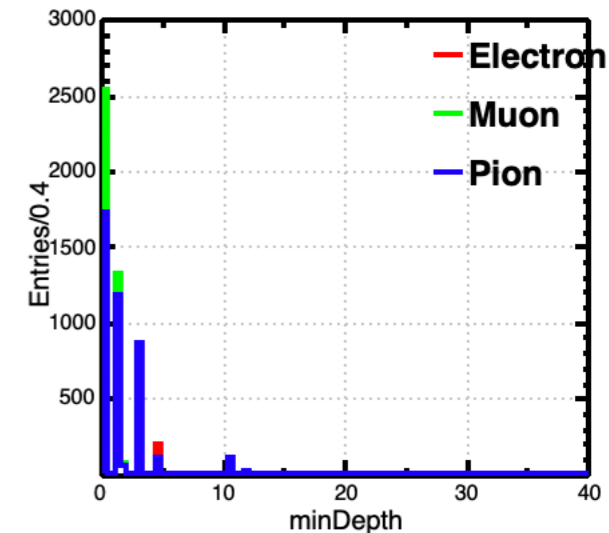
Single

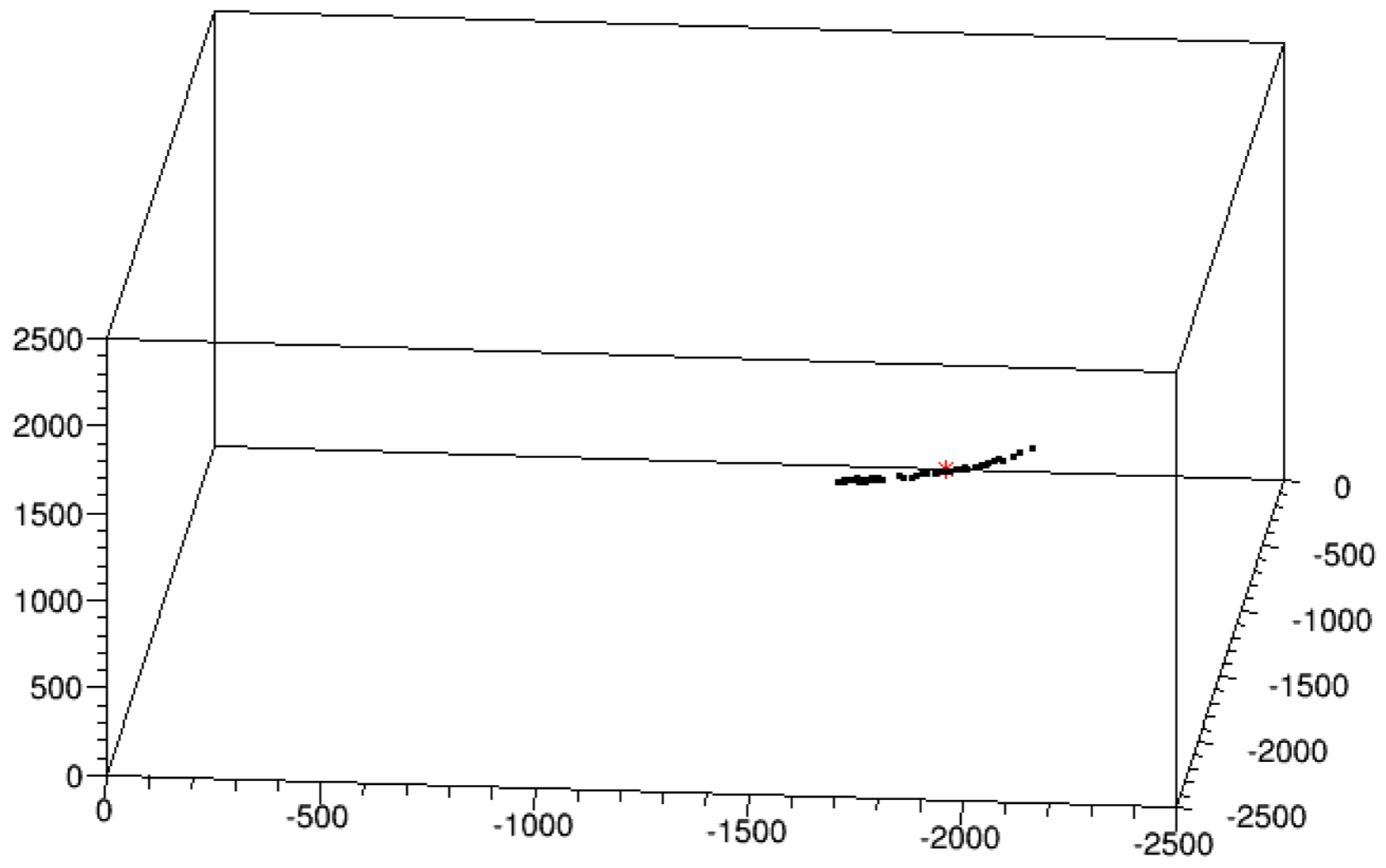


Jet(wrong id)

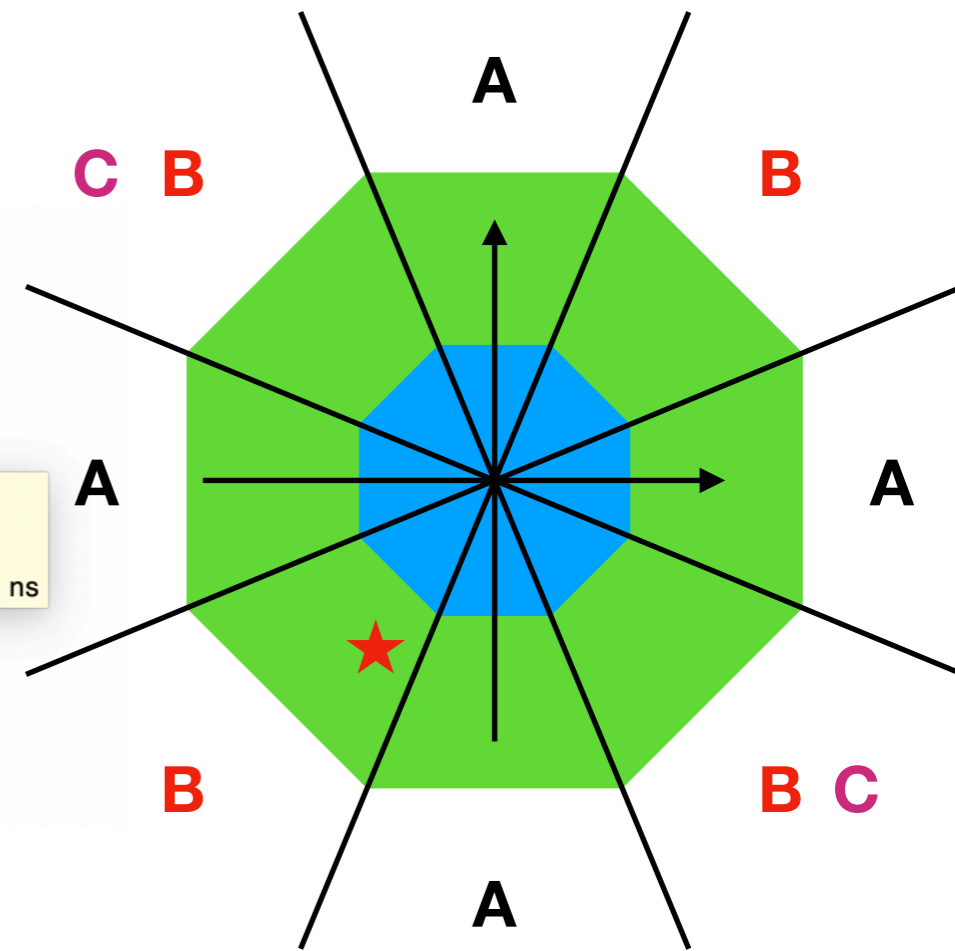
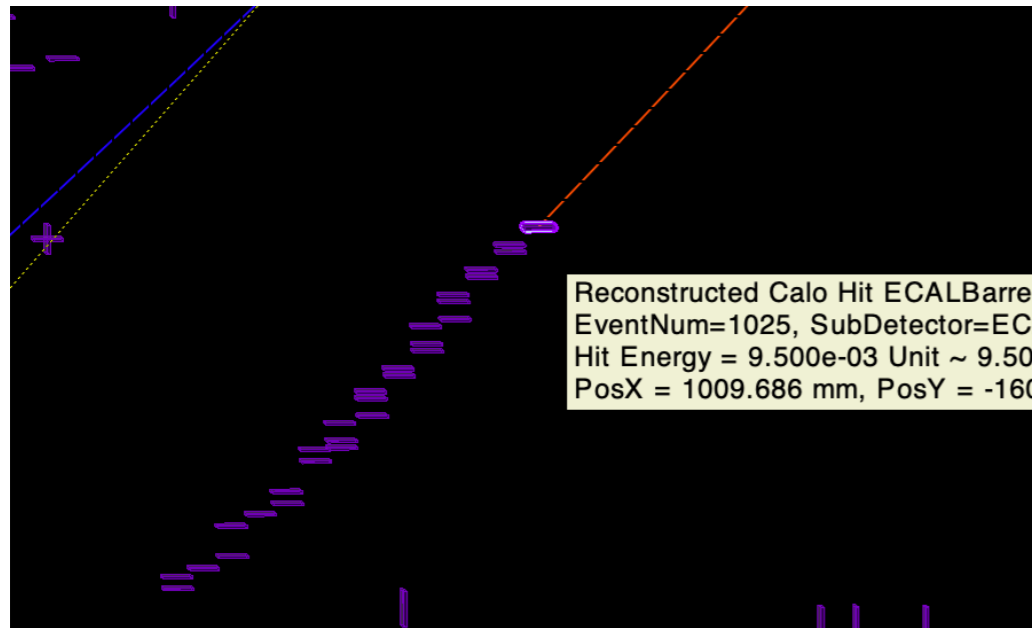


Single



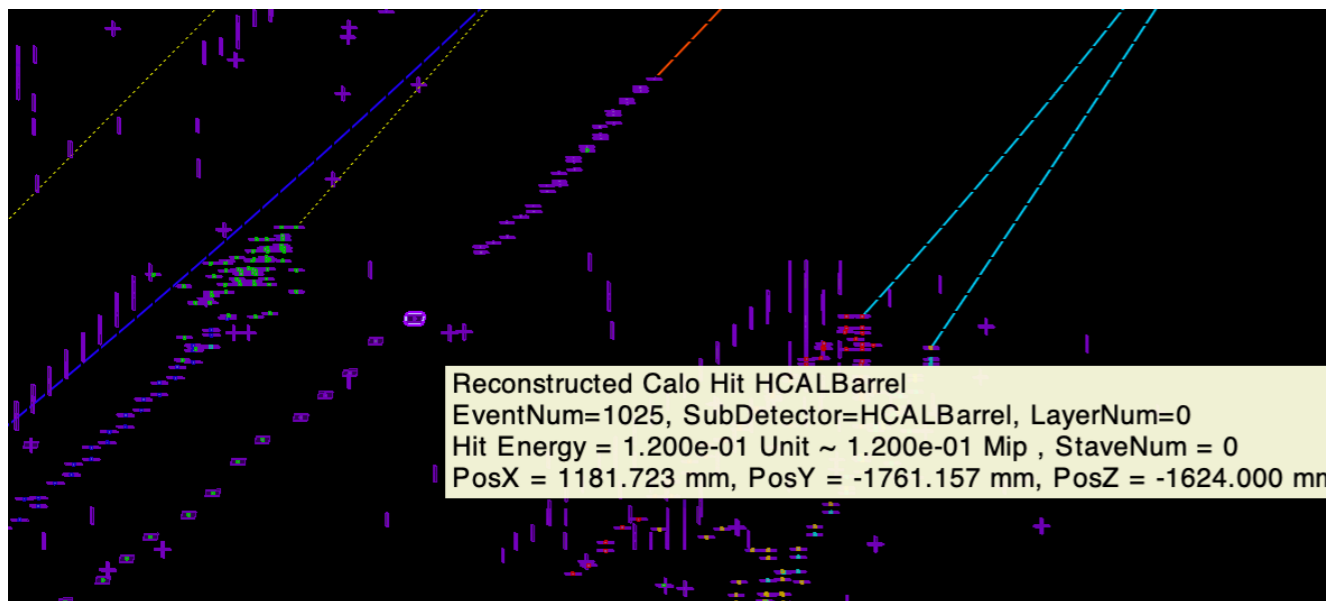


Depth



4th PF0, En=4.18207 MC ID=13 PF0 ID=-211

max dis hit index:9 pos:(1843.74,-2134.39,-2254), min dis hit index:32 pos:(1181.72,-1761.16,-1624), CoG:(1391.94,-1893.09,-1833.58),



A: $(\text{Phi}/(\pi/4)+0.5)\%2==0$
 $\text{dis}=\min(x-r,y-r)$

B: $(\text{Phi}/(\pi/4)+0.5)\%2!=0$
 $\text{dis}=\min(|2*\text{x+y}|/\pi-r,|2*\text{x-y}|/\pi-r)$
Wrong!

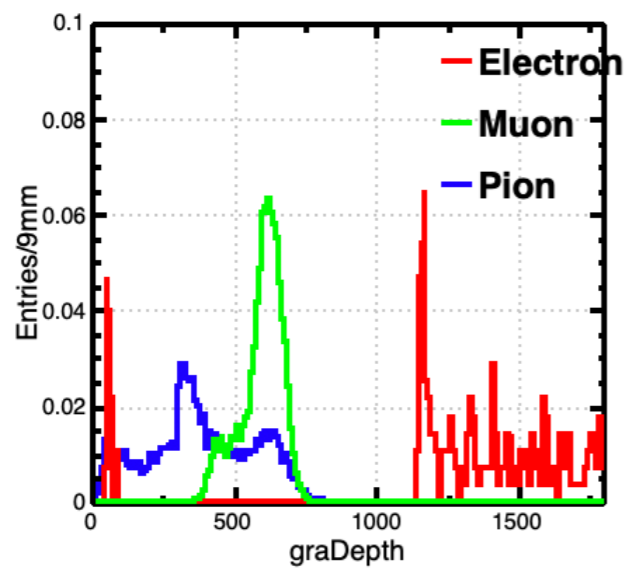
>>

B: $\text{dis}=\min(|\text{x+y}|/\sqrt{2}-r,|\text{x-y}|/\sqrt{2}-r)$
Still wrong!

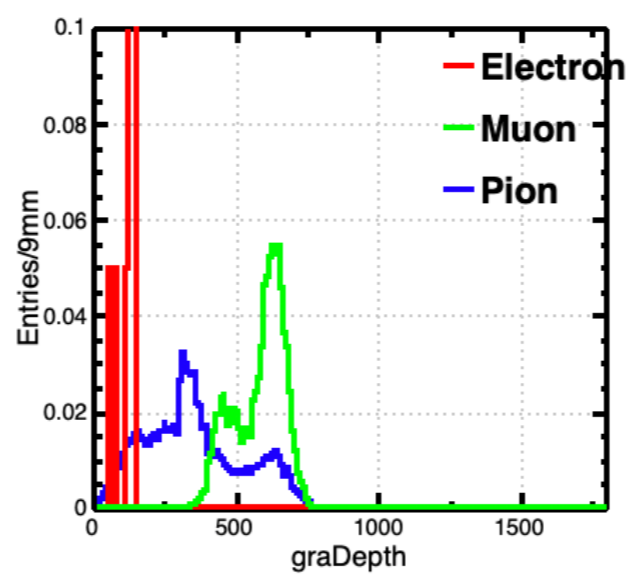
>>

B: $\text{dis}=|\text{x+y}|/\sqrt{2}-r$
C: $\text{dis}=|\text{x-y}|/\sqrt{2}-r$

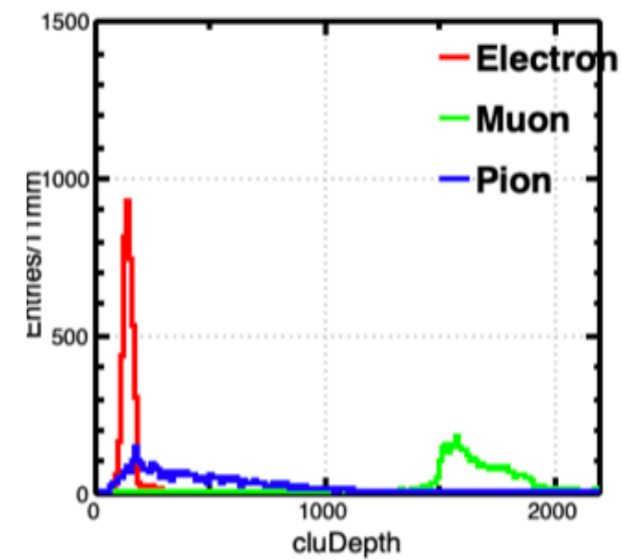
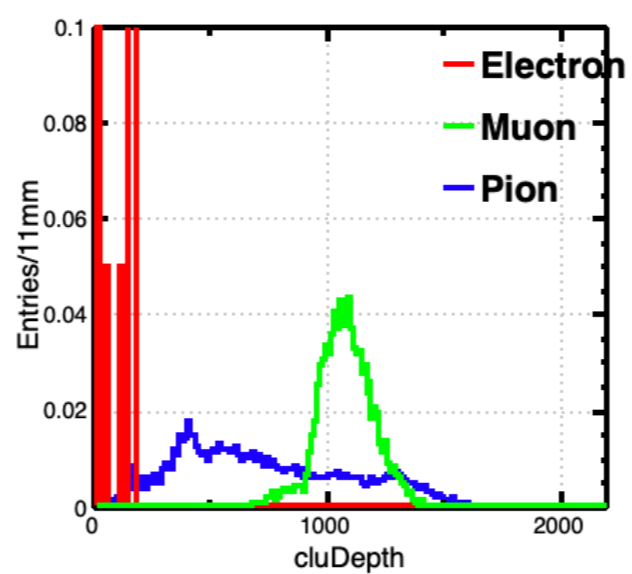
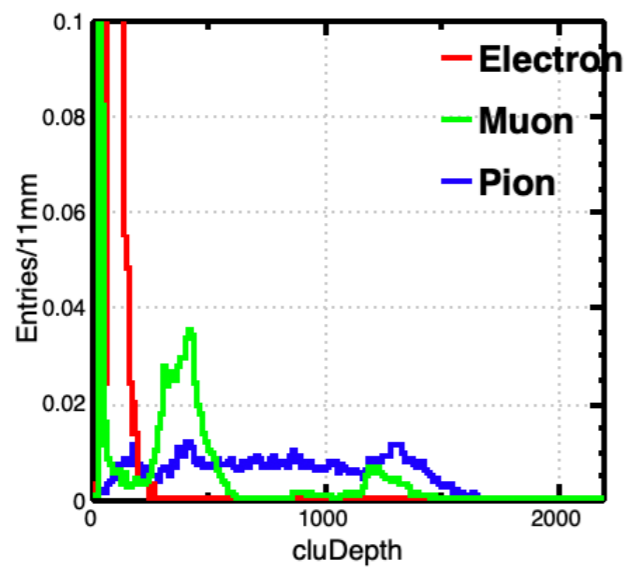
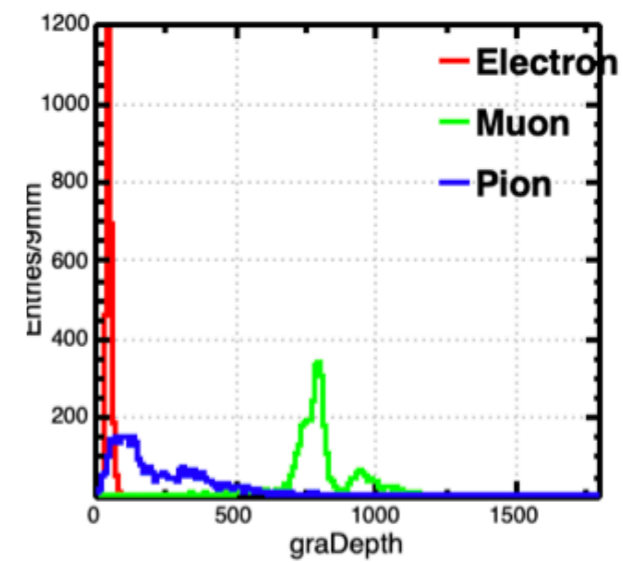
Jet(depth corrected)



Jet(before)

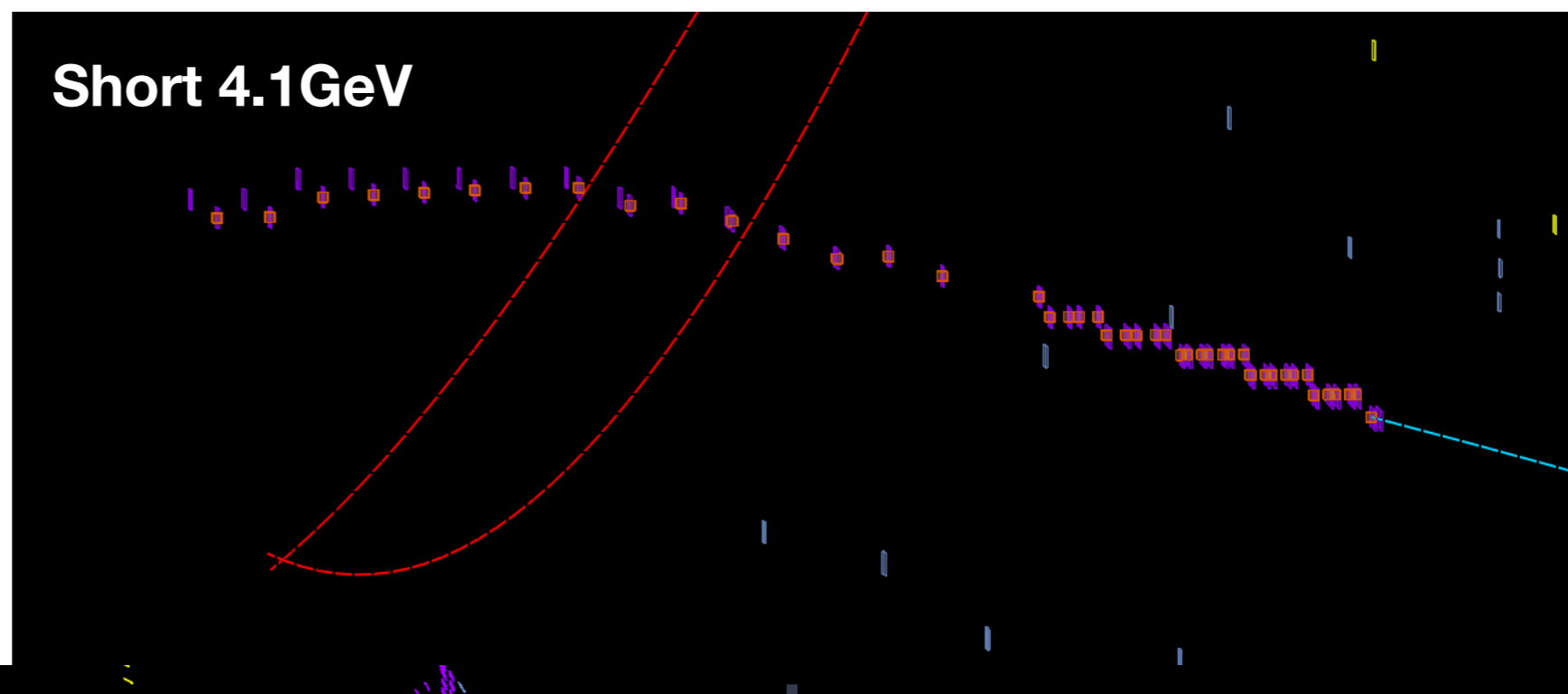


Single



HCAL Active Layers

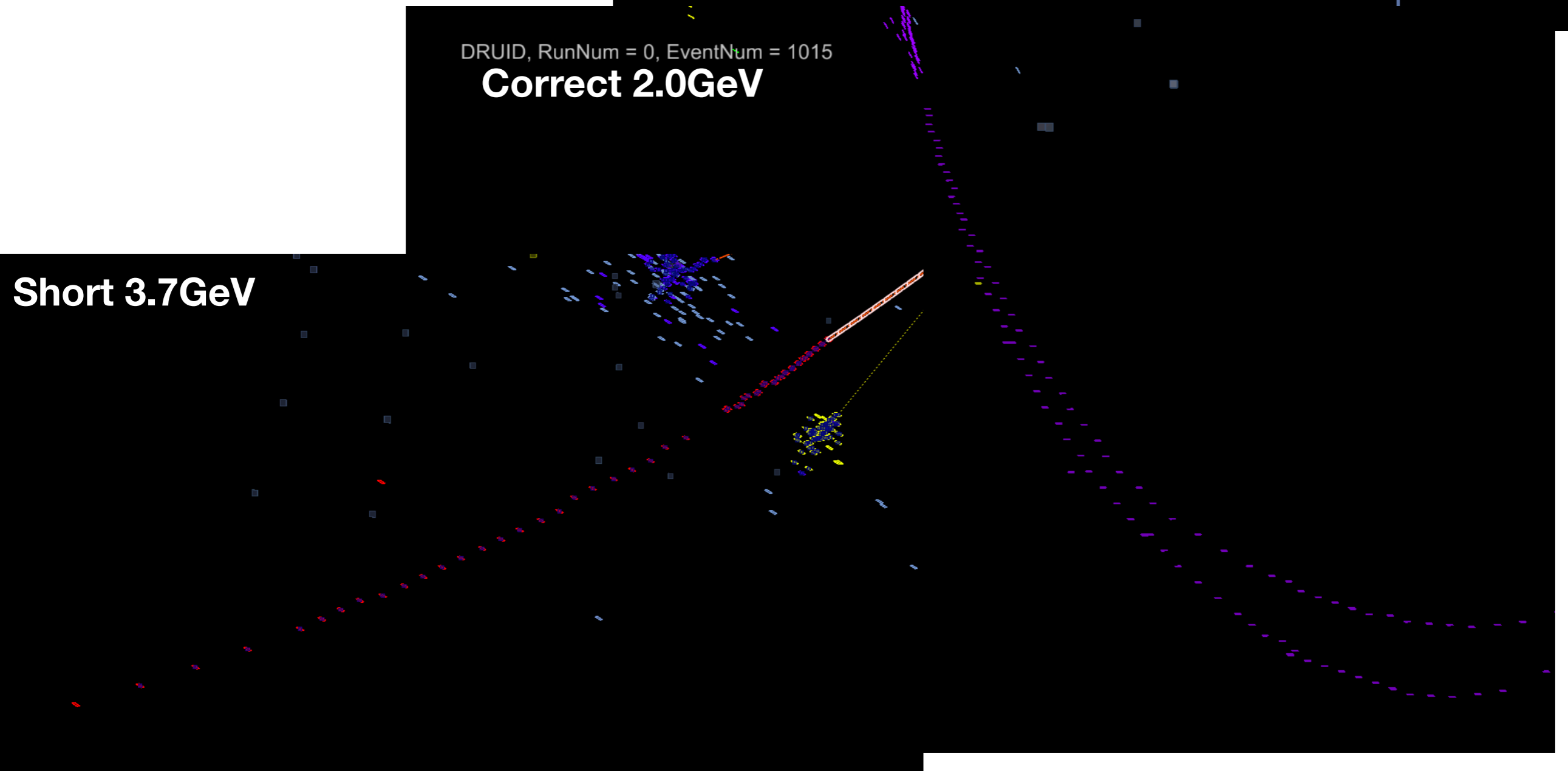
Short 4.1GeV



DRUID, RunNum = 0, EventNum = 1015

Correct 2.0GeV

Short 3.7GeV



Software Problem

- `cepcenv` on `lxslc7`???
- access to `cepcenv` compilation???