

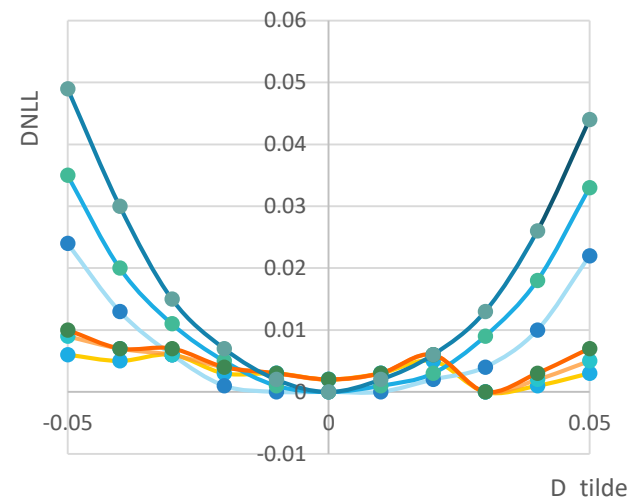
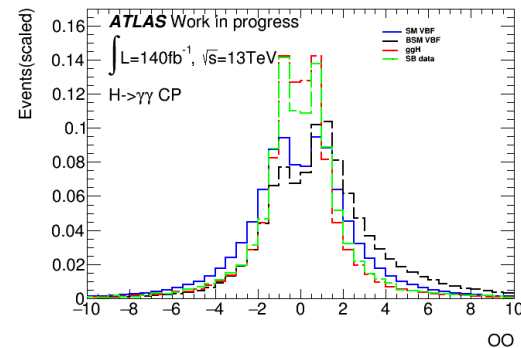
Weekly report

FANGYI GUO

Working status

VBF Higgs CP:

- Cross check: Use different central and tail range to calculate NLL.
- $[-3, 3]$, $[-6, 6]$, $[-9, 9]$
- Tail part always has better performance.
- Had a trick in previous simultaneous fit:
 $NLL(simu) = \sum NLL(cat_i)$, so simultaneous result is always better than any category.



Line 1: $OO \in [-3, 3]$ Line 2: $OO \in [-6, 6]$ Line 3: $OO \in [-9, 9]$
 Line 4: $OO \notin [-3, 3]$ Line 5: $OO \notin [-6, 6]$ Line 6: $OO \notin [-9, 9]$

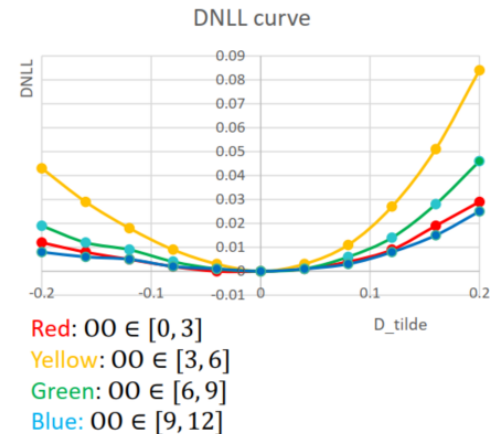
Working status

INT note: not finished yet

- Finished part: text of abstract, introduction, theory model, ATLAS detector.
- Doing: Data and MC, analysis strategy, some plots and tables.
- Maybe need 3~4 days more.

Might have some problem in previous plot

- I floated the total Nsig in fit.



ADCoS shift: have been promoted to senior shifter.