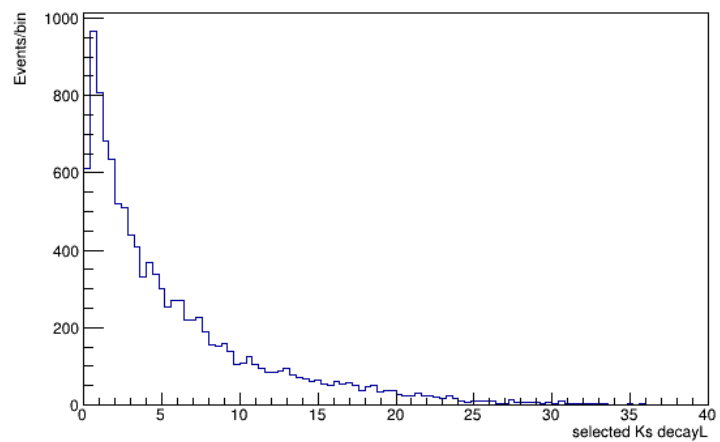
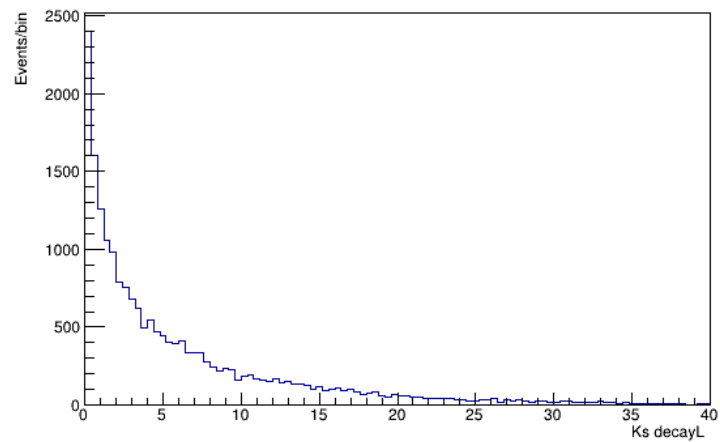


$K_s \text{ eff}$

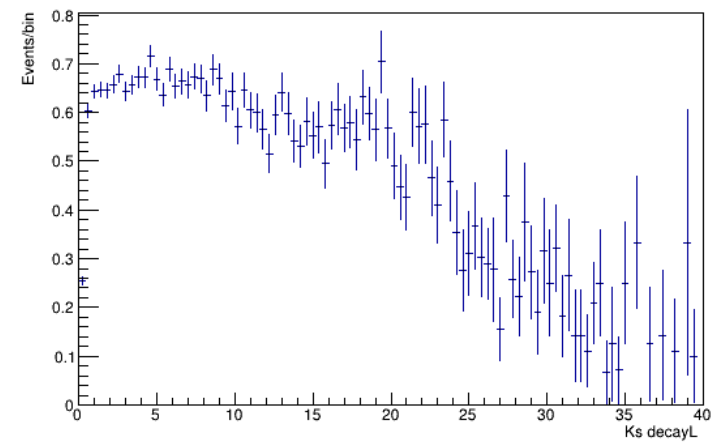
selected_decayL



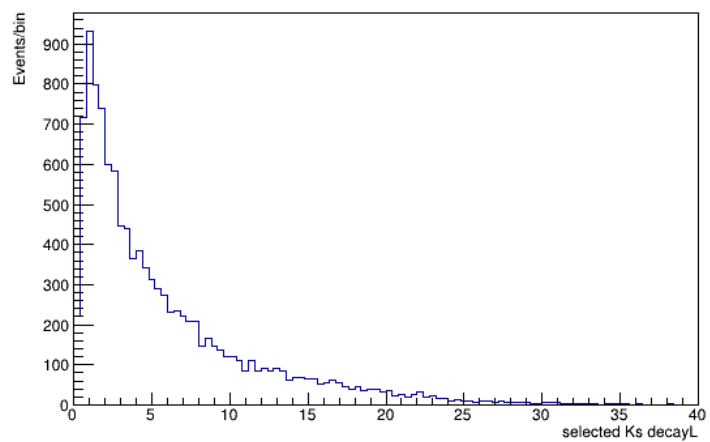
truth_decayL



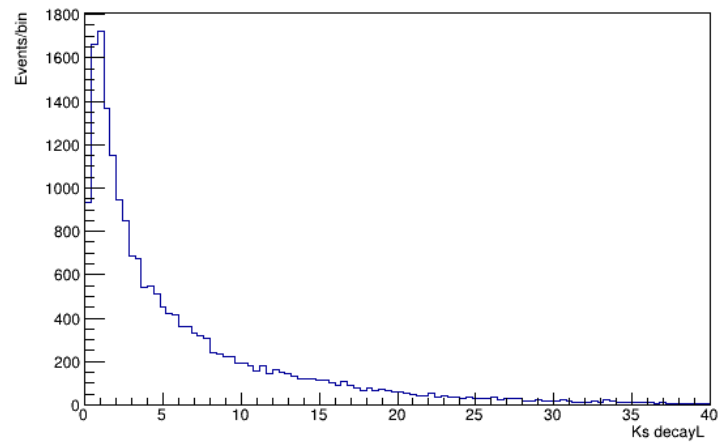
Eff



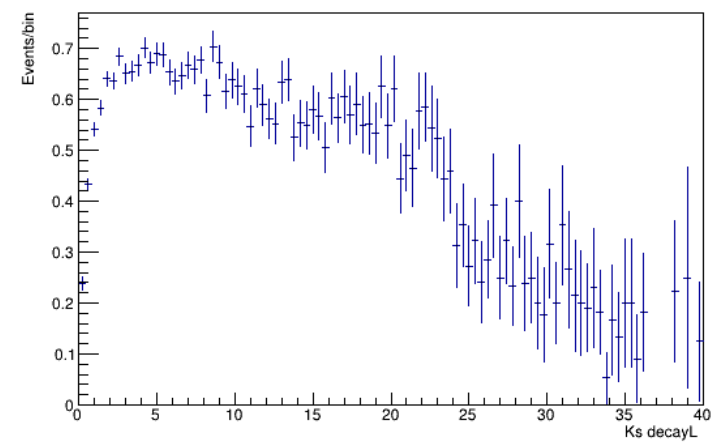
selected_decayL



truth_decayL

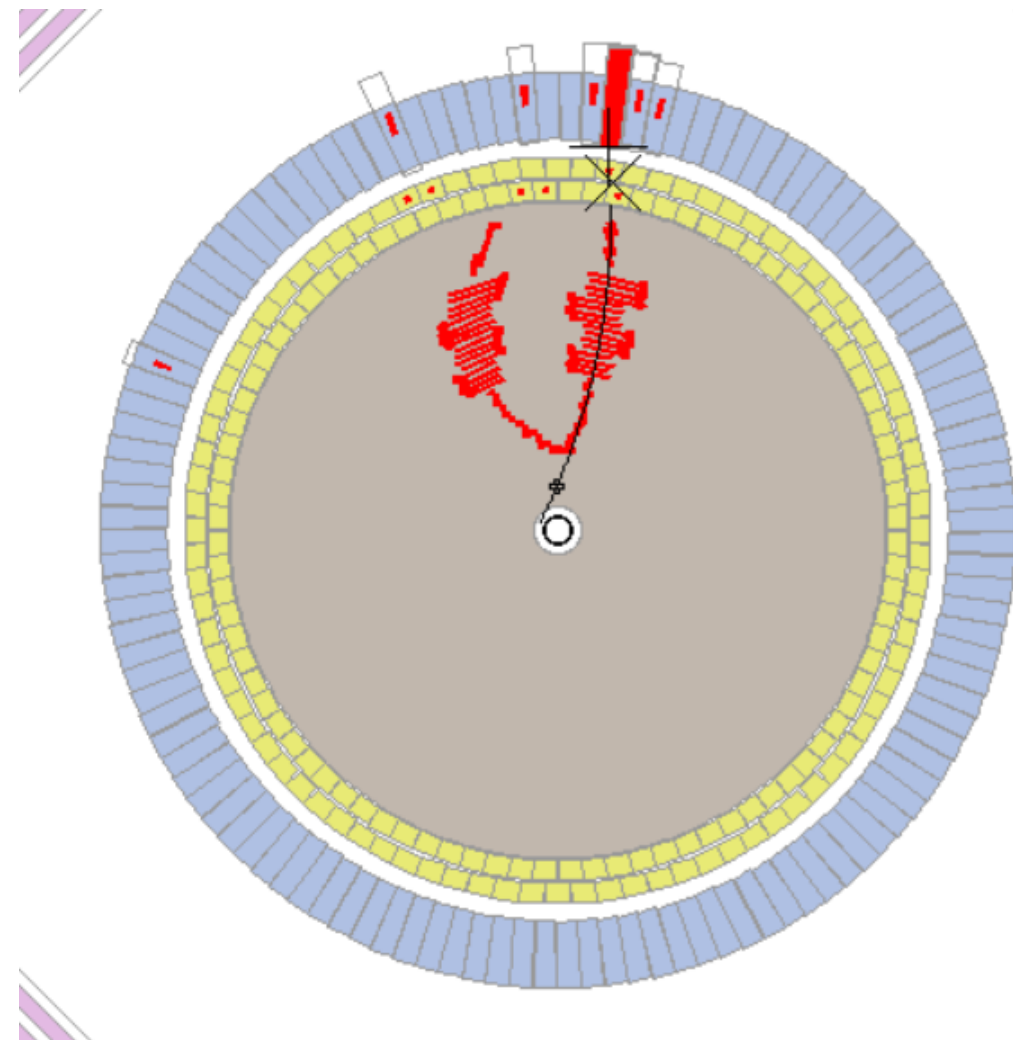
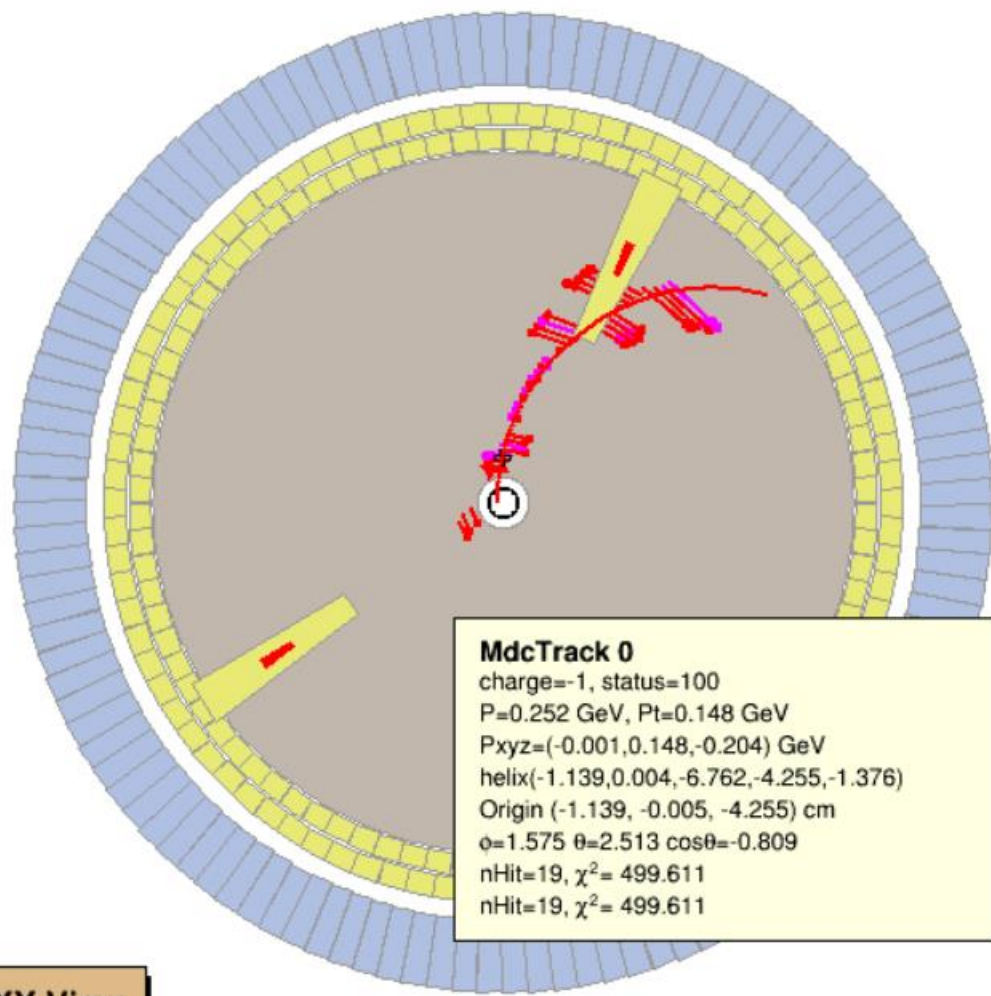


Eff

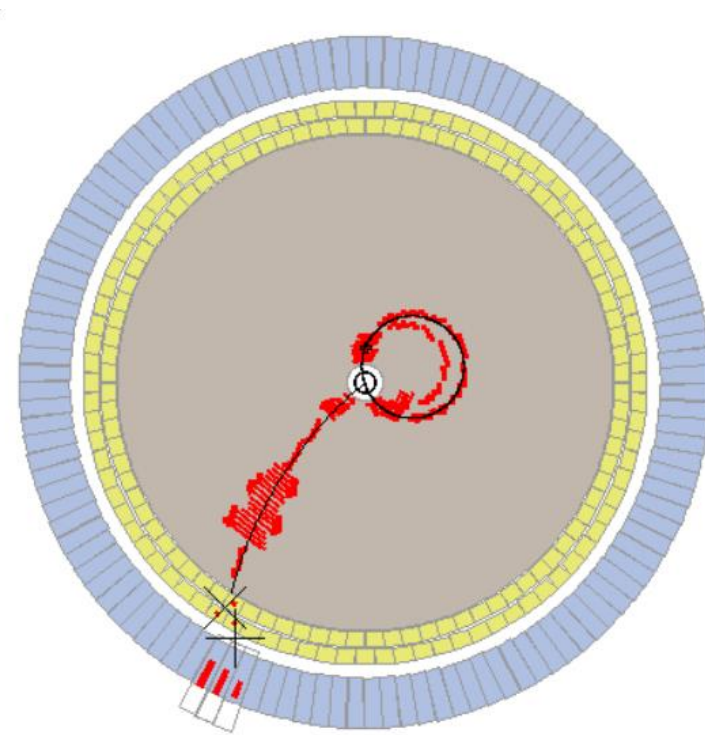
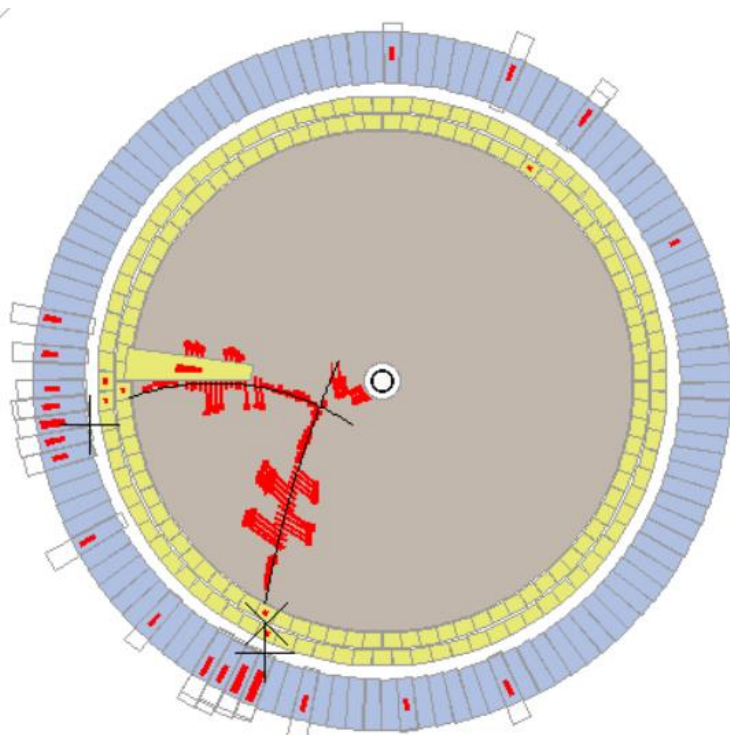
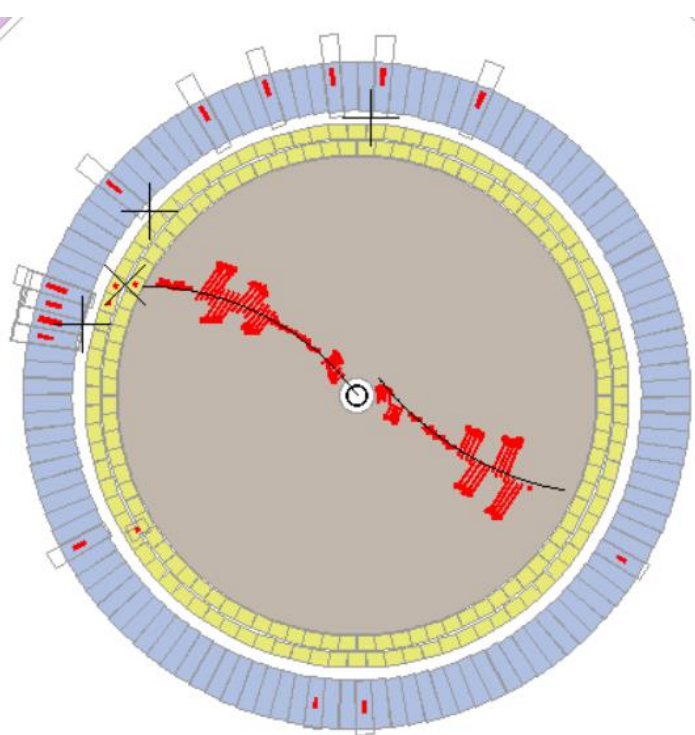


编号	原因	事例数	占比
0	正确重建事例数	11382	57%
1	带电径迹小于两条	2854	14%
2	两条相同电荷径迹	167	1%
3	$\text{abs}(m_{Ks}-0.498) > 0.1$	714	4%
4	第一次拟合失败	234	1%
5	第二次拟合失败	190	1%
6	$\text{chi}^2 > 200$	121	1%
7	$\text{decayL} < 0$	737	4%
8	$\text{decayL}/\text{err} \leq 2$	961	5%
9	$m_{Ks} < 0.487 \quad \quad m_{Ks} > 0.511$	2408	12%
10	没有被识别为pion 或 $\text{fabs}(\text{costheta}) \geq 0.93$	232	1%
	合计	20000	100%

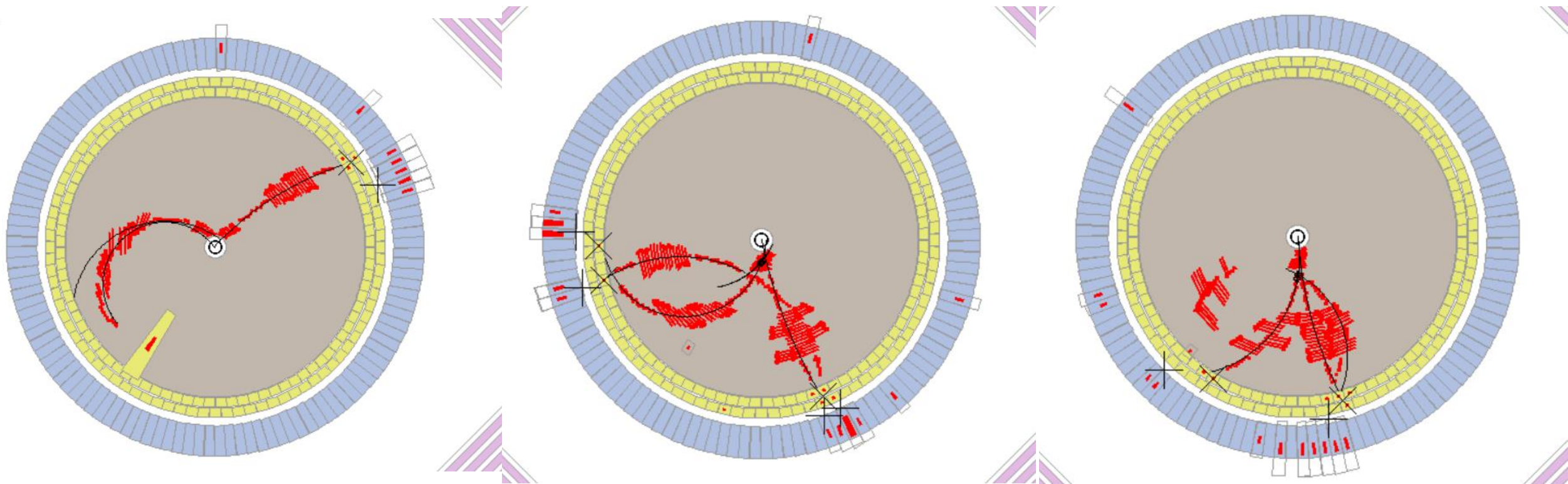
带电径迹少于2条



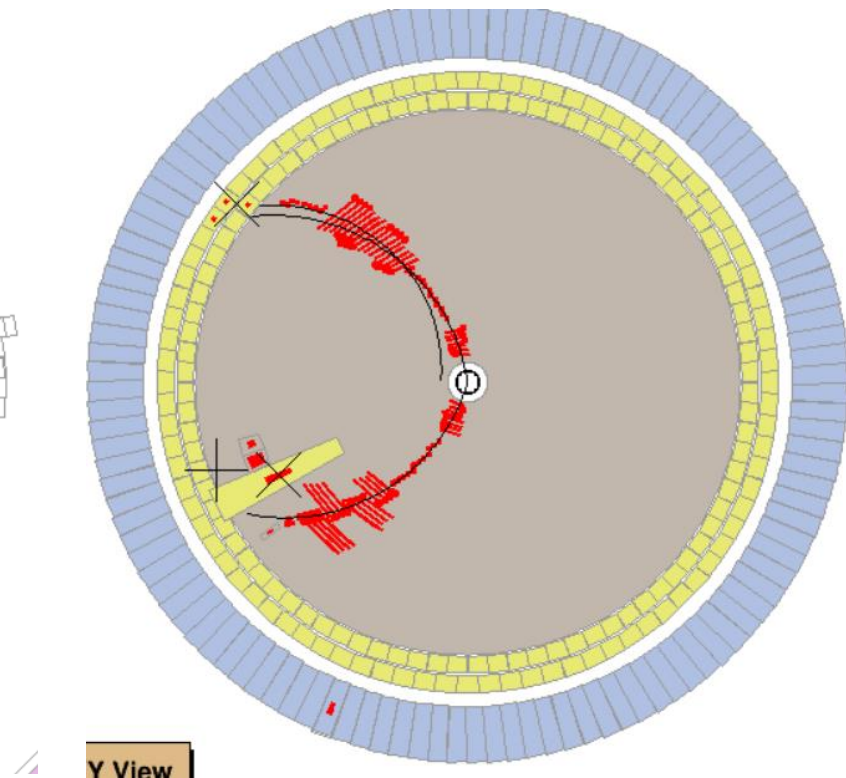
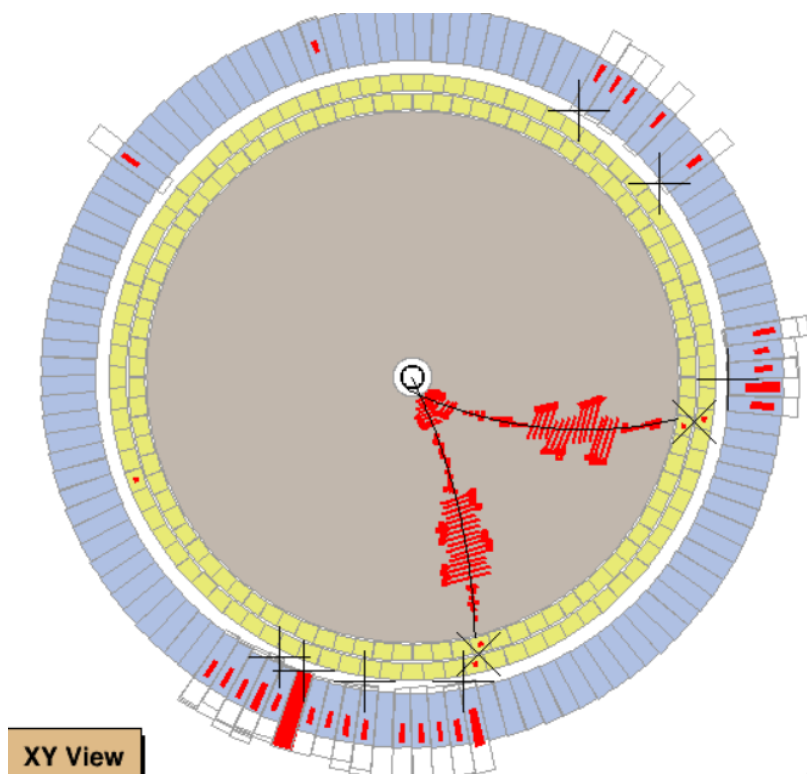
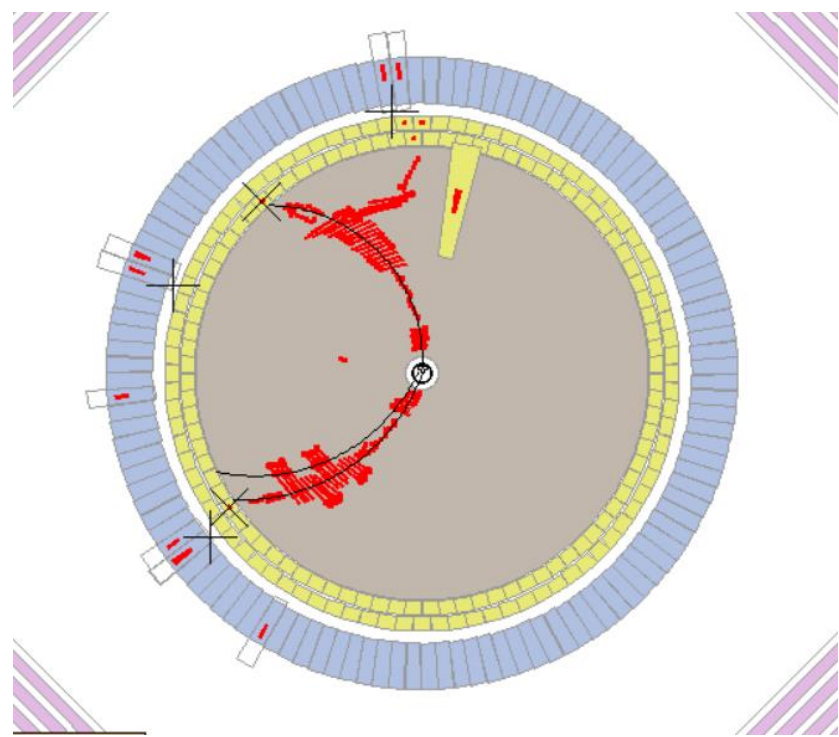
2条相同电荷径迹



第一次拟合失败



第二次拟合失败



没有被识别为pion 或 $|\cos \theta|$ 太大

