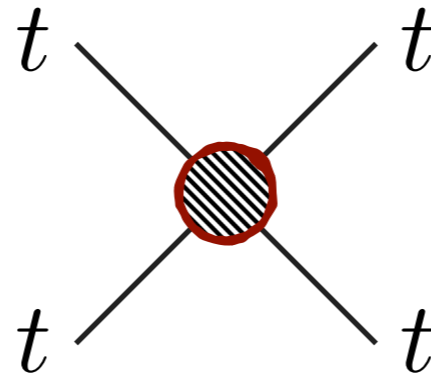


# The Present and Future of 4-Tops



HIGGS AND EFFECTIVE FIELD THEORY 2021

Javi Serra



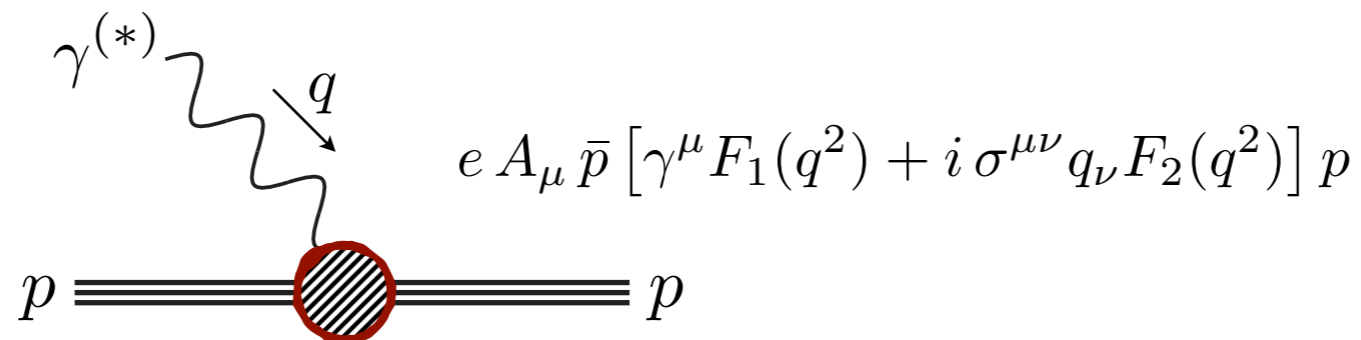
Technische Universität München

[arXiv:2010.05915](https://arxiv.org/abs/2010.05915)

w/ G. Banelli, E. Salvioni, T. Theil and A. Weiler

# Strongly-interacting, a.k.a. composite, top quark

Since its discovery (CDF, D0 '95) we know the top is not a composite like e.g. the proton.



$$F_1(q^2 \simeq -m_p^2) - 1 = O(1)$$



Compositeness scale of order of the particle's mass.

$$m_* \sim m_p$$

# chiral Top effective compositeness

$$t_R \rightarrow e^{i\alpha} t_R$$

$$q_L \rightarrow e^{-i\alpha} q_L$$



$$m_t \ll m_*$$



Effective Field Theory (EFT) approach best suited to describe top compositeness.

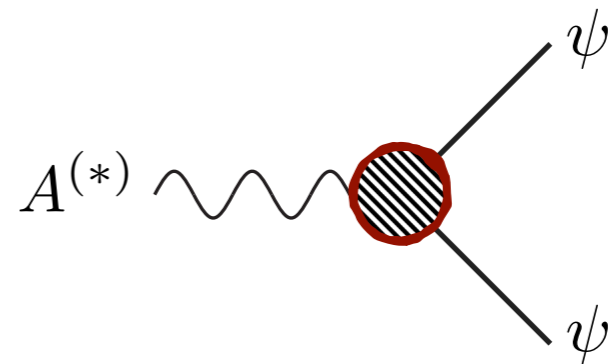
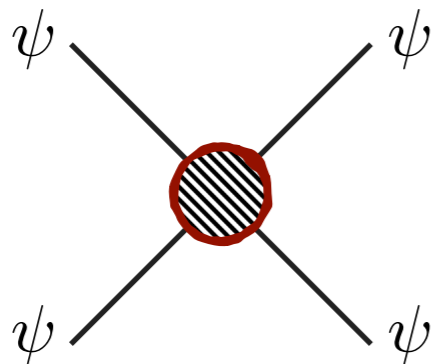
(Georgi et al. '94)

$$\psi = t_R, q_L$$

$$\frac{c_{\psi\psi}}{m_*^2} (\bar{\psi} \gamma_\mu \psi)^2$$

$$\frac{c_{\psi D}}{m_*^2} \bar{\psi} D_\mu^3 \gamma^\mu \psi$$

$$D_\mu^3 \sim D^2 D_\mu, D_\nu D_\mu D^\nu, g F_{\mu\nu} D^\nu$$

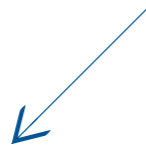


Two distinct types of non-standard effects.

# chiral Top effective compositeness

$$t_R \rightarrow e^{i\alpha} t_R$$

$$q_L \rightarrow e^{-i\alpha} q_L$$



$$m_t \ll m_*$$



Effective Field Theory (EFT) approach best suited to describe top compositeness.

(Georgi et al. '94)

$$\psi = t_R, q_L$$

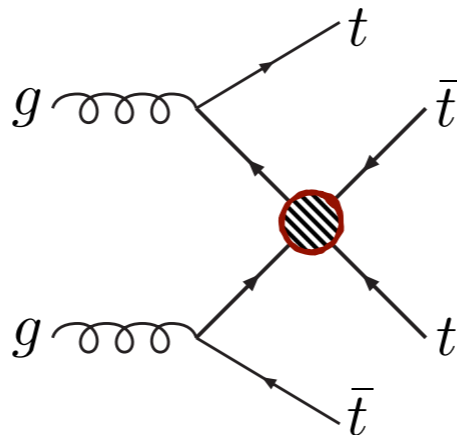
$$\frac{c_{\psi\psi}}{m_*^2} (\bar{\psi}\gamma_\mu\psi)^2$$

$$\frac{c_{\psi D}}{m_*^2} \bar{\psi} D_\mu^3 \gamma^\mu \psi$$

Most genuine consequence of top compositeness: strong 4-top scattering.

(Pomarol, JS '08)

$$c_{\psi\psi} \sim g_*^2$$



$$\mathcal{M}_{\psi\psi} \sim \frac{g_*^2}{m_*^2} s$$

Enhanced in strongly-coupled theories  $g_* \gg 1$ ; energy growing effects.



# Goldstino effective compositeness

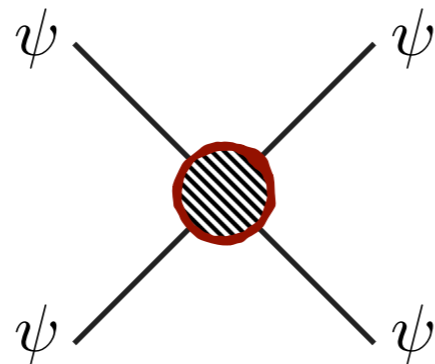
(Liu, Pomarol, Rattazzi, Riva '16)

$$\psi \rightarrow \psi + \xi + i(\psi^\dagger \bar{\sigma} \xi - \xi^\dagger \bar{\sigma} \psi) \partial \psi$$

$$m_\psi \ll m_*$$



$$\frac{\hat{c}_{\psi\psi}}{m_*^4} (\partial_\nu \bar{\psi} \gamma^\mu \psi) (\bar{\psi} \gamma_\mu \partial^\nu \psi)$$



$$\hat{\mathcal{M}}_{\psi\psi} \sim \frac{\hat{c}_{\psi\psi}}{m_*^4} s^2$$

Coefficients theoretically constrained by unitarity, locality and causality of UV completion.

(Bellazzini, Riva, JS, Sgarlata '17)

$$\hat{c}_{\psi\psi} > 0$$

# chiral Top effective compositeness

$$t_R \rightarrow e^{i\alpha} t_R$$

$$q_L \rightarrow e^{-i\alpha} q_L$$

$$m_t \ll m_*$$



Effective Field Theory (EFT) approach best suited to describe top compositeness.

(Georgi et al. '94)

$$\psi = t_R, q_L$$

$$\frac{c_{\psi\psi}}{m_*^2} (\bar{\psi}\gamma_\mu\psi)^2$$

$$\frac{c_{\psi D}}{m_*^2} \bar{\psi} D_\mu^3 \gamma^\mu \psi$$

$$c_{\psi D} \sim 1$$

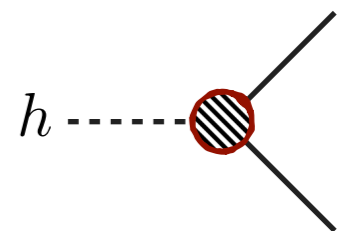
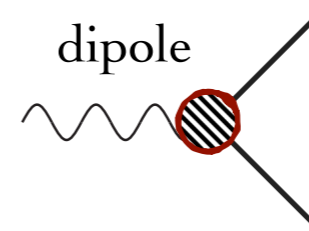
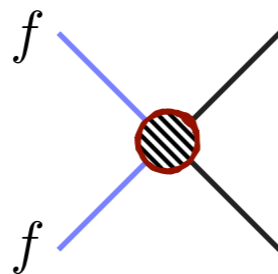
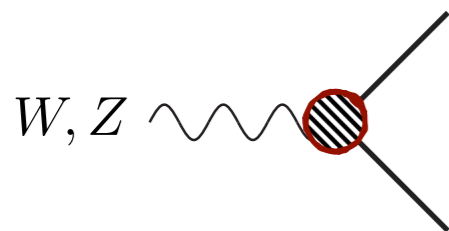
In physical processes, always involve other SM particles (equations of motion).

$$g^2 (H^\dagger D_\mu H) (\bar{\psi}\gamma^\mu\psi)$$

$$g^2 (\bar{f}\gamma_\mu f) (\bar{\psi}\gamma^\mu\psi)$$

$$g y_t \bar{q}_L H \sigma_{\mu\nu} F^{\mu\nu} t_R$$

$$y_t \lambda_H |H|^2 \bar{q}_L H t_R$$



Not enhanced at strong coupling; other fields complicate top-compositeness interpretation.

# Why/Where top compositeness

- Search for inner structure of particles currently viewed as fundamental.
- Part of solution to the flavor puzzle of the Standard Model.
- ...

However, none of these single out per se the top quark nor TeV energies.



- Origin of the electroweak scale and the electroweak hierarchy problem.

$$H \text{ --- } \psi \text{ --- } H \quad m_H^2 \sim y_\psi^2 m_*^2$$

Large Yukawa indicates top quark plays key role in theories explaining EWSB.

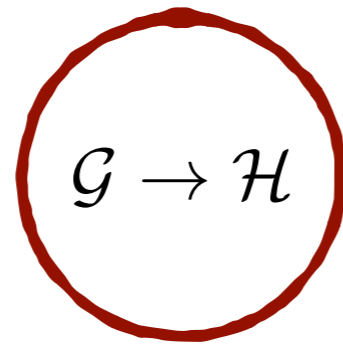
# Composite pseudo-Goldstone Higgs

New strong dynamics gives rise to the Higgs field from global symmetry breaking.

(Kaplan, Georgi '83)

$$H \rightarrow H + \Theta$$

strongly-coupled sector



$$V(H) = 0$$

Provides rationale why Higgs is lighter than compositeness scale.

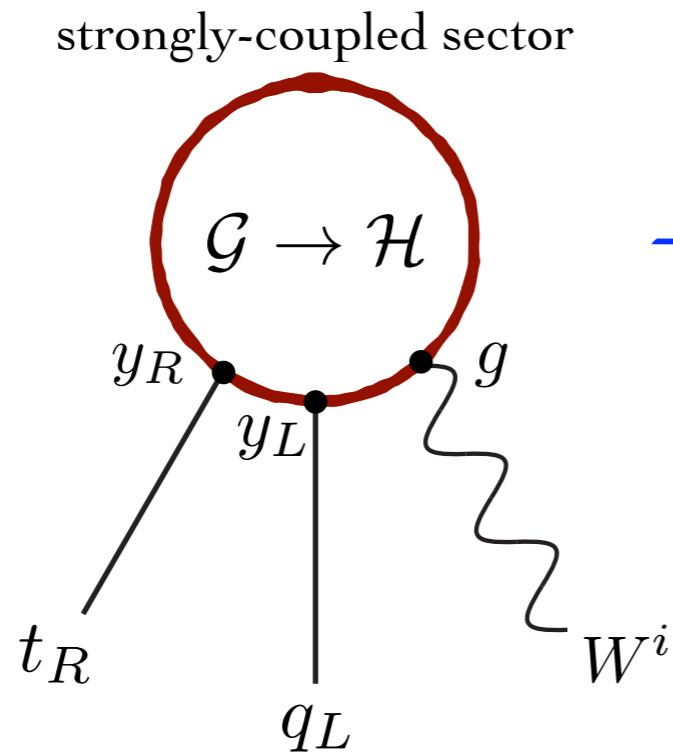
$$m_H \ll m_*$$

# Composite pseudo-Goldstone Higgs

New strong dynamics gives rise to the Higgs field from global symmetry breaking.

(Kaplan, Georgi '83)

$$H \rightarrow H + \Theta$$



$$V(H) = m_H^2 |H|^2 + \lambda_H |H|^4 \neq 0$$

$$m_H^2 \sim \frac{m_*^2}{16\pi^2} (-\underline{y_t^2} + g^2) < 0$$

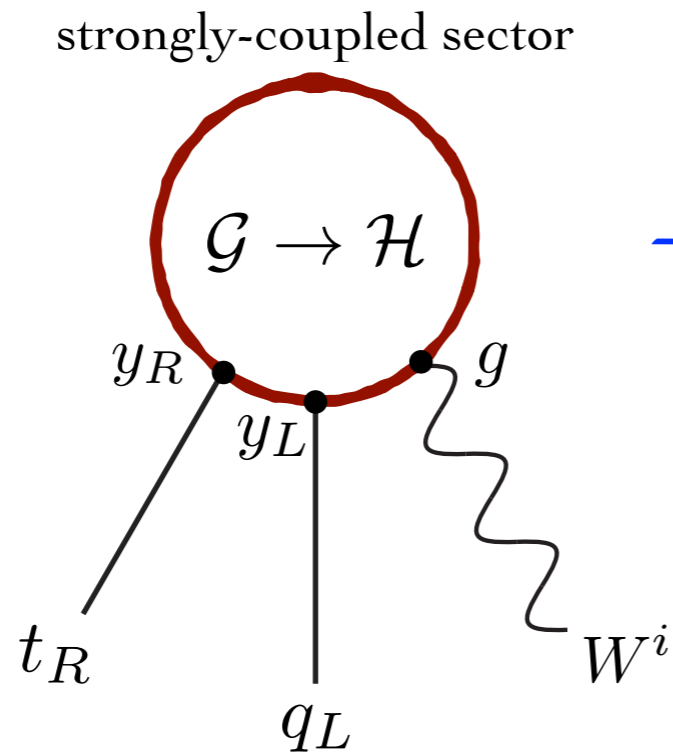
The top quark is crucial to break the electroweak symmetry.

# Composite pseudo-Goldstone Higgs

New strong dynamics gives rise to the Higgs field from global symmetry breaking.

(Kaplan, Georgi '83)

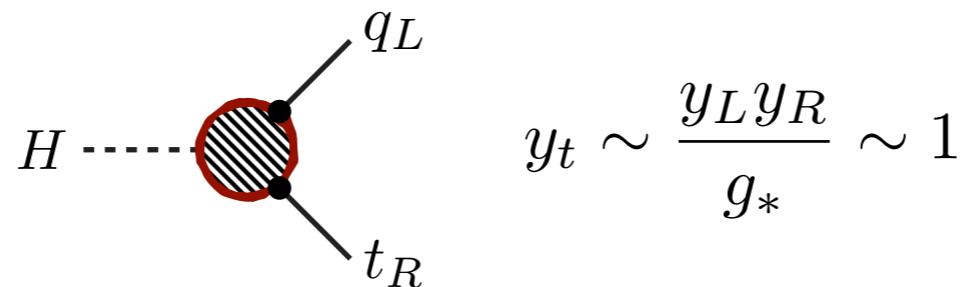
$$H \rightarrow H + \Theta$$



$$V(H) = m_H^2 |H|^2 + \lambda_H |H|^4 \neq 0$$

$$m_H^2 \sim \frac{m_*^2}{16\pi^2} (-\underline{y_t^2} + g^2) < 0$$

The large top Yukawa requires a large degree of top compositeness.



$$y_t \sim \frac{y_L y_R}{g_*} \sim 1$$

# Top and Higgs compositeness

Let us consider\* limit of **maximally strongly-coupled right-handed top**:

$$y_R \rightarrow g_*$$

$$y_L \rightarrow y_t$$

■ 4-top contact int.:

$$\frac{g_*^2}{m_*^2} (\bar{t}_R \gamma_\mu t_R)^2$$

LHC →

$$\frac{m_*}{g_*} \gtrsim 0.7 \text{ TeV}$$

■  $Ztt$  coupling:

$$\frac{g_*^2}{m_*^2} (H^\dagger D_\mu H) (\bar{t}_R \gamma^\mu t_R)$$

LHC →

$$\frac{\delta g_t}{g_t} \lesssim 0.1$$

■  $htt$  coupling:

$$\frac{y_t g_*^2}{m_*^2} |H|^2 \bar{q}_L H t_R$$

LHC →

$$\frac{\delta y_t}{y_t} \lesssim 0.3$$

⇓

■  $Wtb$  coupling:

$$\frac{y_t^2}{m_*^2} (H^\dagger \sigma^a D_\mu H) (\bar{q}_L \sigma^a \gamma^\mu q_L)$$

LHC →

$$\frac{\delta g_{Wtb}}{g_{Wtb}} \lesssim 3 \times 10^{-2}$$

■ top-dipole coupling:

$$\frac{y_t g_s}{m_*^2} \bar{q}_L H \sigma_{\mu\nu} G^{\mu\nu} t_R$$

LHC →

$$m_* \gtrsim 1 \text{ TeV}$$

■ light-top contact int.:

$$\frac{g_s^2}{m_*^2} (\bar{u}_R \gamma_\mu u_R) (\bar{t}_R \gamma^\mu t_R)$$

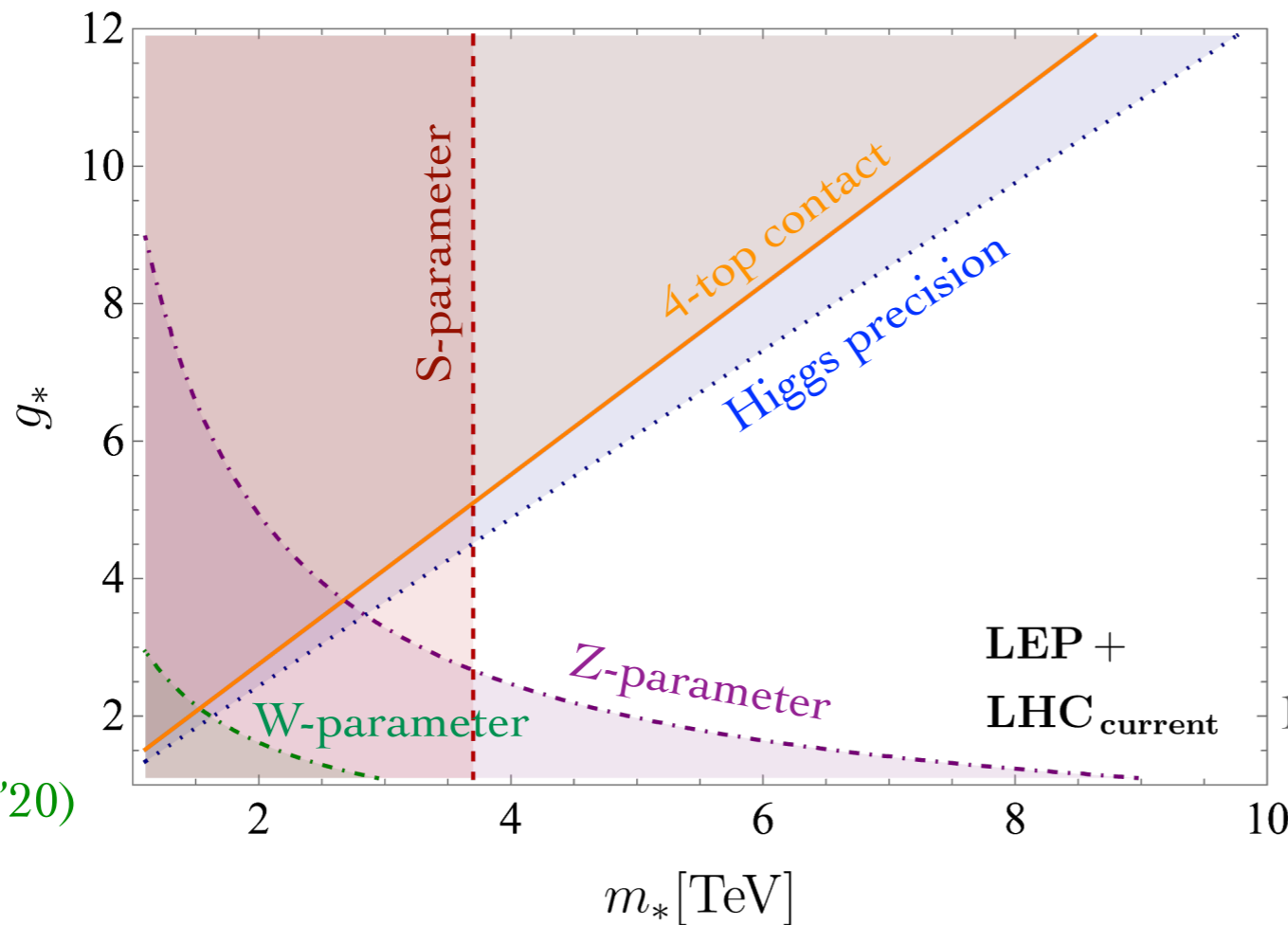
LHC →

$$m_* \gtrsim 1.5 \text{ TeV}$$

\* Experimental consistency and fine-tuning.

# Current status

Most top-physics constraints are weaker than Higgs-physics, except 4-top production.



(Banelli et al. '20)

$$\frac{m_*}{g_*} \gtrsim 0.73 \text{ TeV} \quad (\text{ATLAS '18})$$

$$\frac{m_*}{g_*} \gtrsim 0.82 \text{ TeV} \quad (\text{de Blas et al. '19})$$

Power counting approach: exclusions derived from dominant effect in given observable; complementary to global fits.

■ Higgs precision:  $\frac{g_*^2}{m_*^2} \partial_\mu |H|^2 \partial^\mu |H|^2$

■ S-parameter:  $\frac{gg'}{m_*^2} H^\dagger W_{\mu\nu} H B^{\mu\nu}$

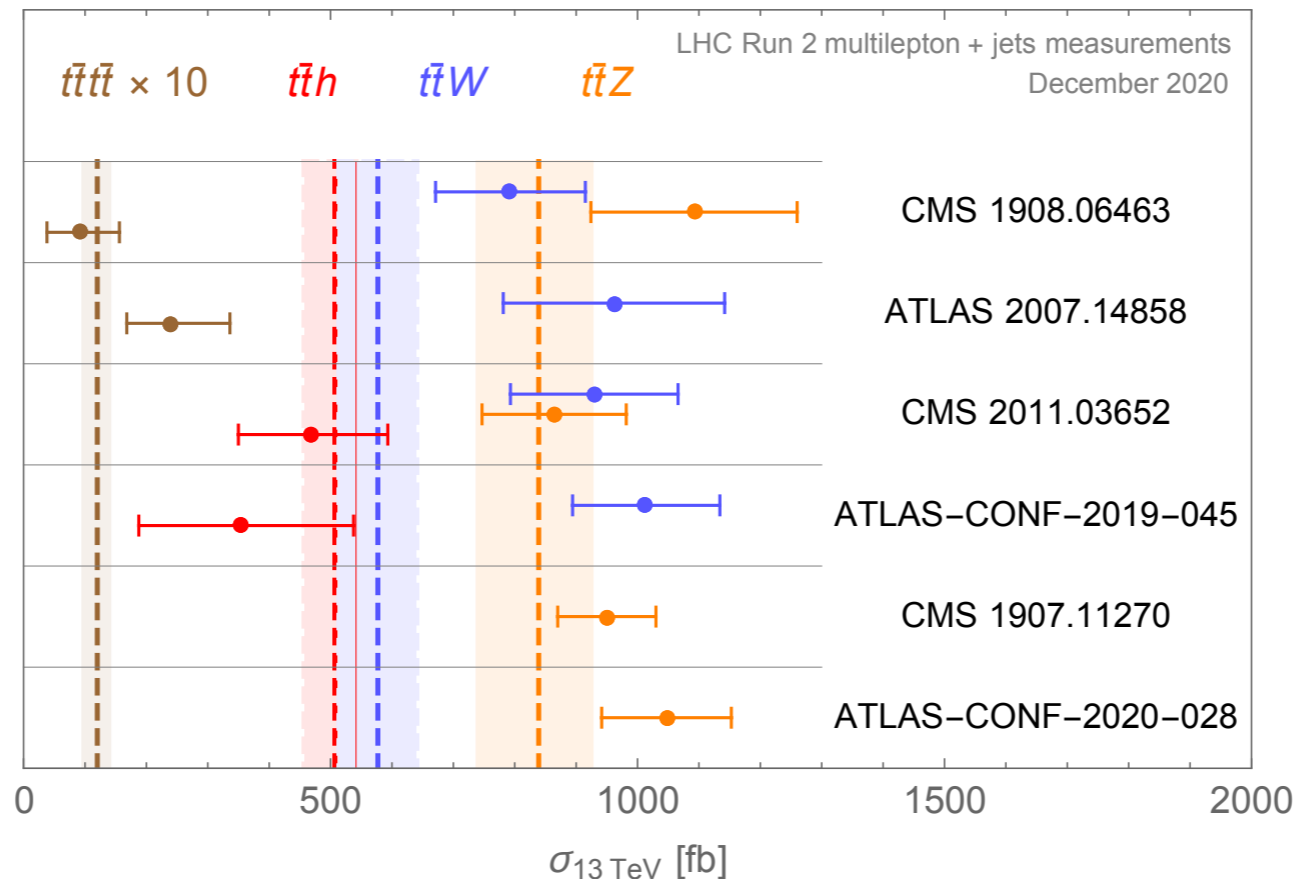
■ Z-parameter:  $\frac{g_s^2}{g_*^2 m_*^2} (D_\rho G_{\mu\nu})^2$

■ W-parameter:  $\frac{g^2}{g_*^2 m_*^2} (D_\rho W_{\mu\nu})^2$



# LHC multilepton + jets “excesses”

Run-2 ATLAS and CMS analyses show mild yet coherent excesses over the SM.



(Banelli et al. '20)

Most theory activity focussed on improving SM predictions, in particular top-pair +  $W$ .

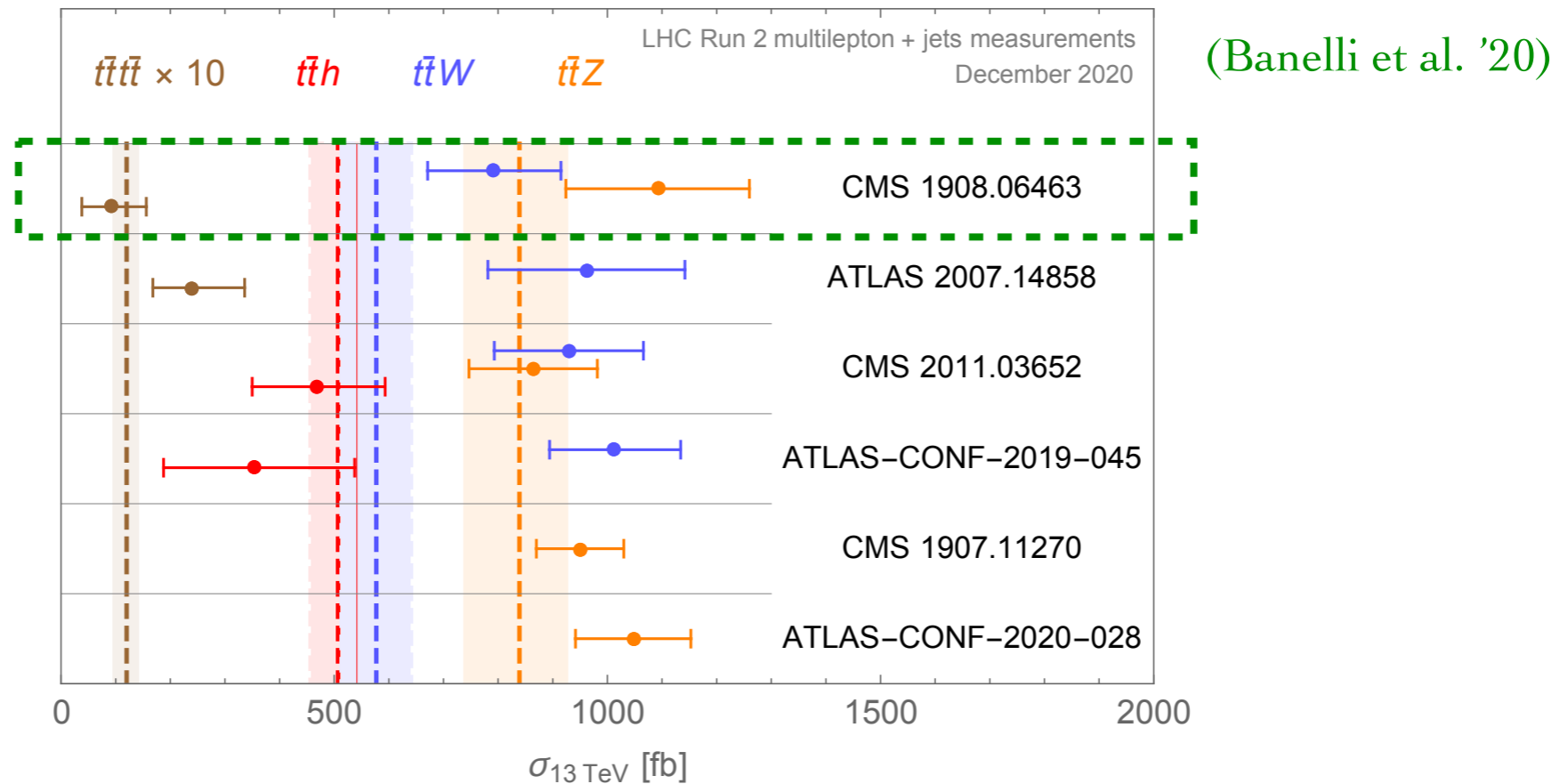
(arXiv:1907.04343, 2001.03031, 2004.09552, 2005.09427, 2012.01363, 2007.12089, 2009.0003, 2101.11808, ...)



Interesting to explore in the context of new physics in the top/Higgs sector.

# LHC multilepton + jets “excesses”

Run-2 ATLAS and CMS analyses show mild yet coherent excesses over the SM.



Most theory activity focussed on improving SM predictions, in particular top-pair +  $W$ .  
([arXiv:1907.04343](#), [2001.03031](#), [2004.09552](#), [2005.09427](#), [2012.01363](#), [2007.12089](#), [2009.0003](#), [2101.11808](#), ...)

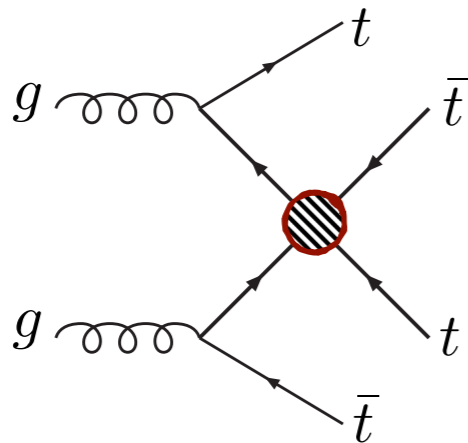


Interesting to explore in the context of new physics in the top/Higgs sector.

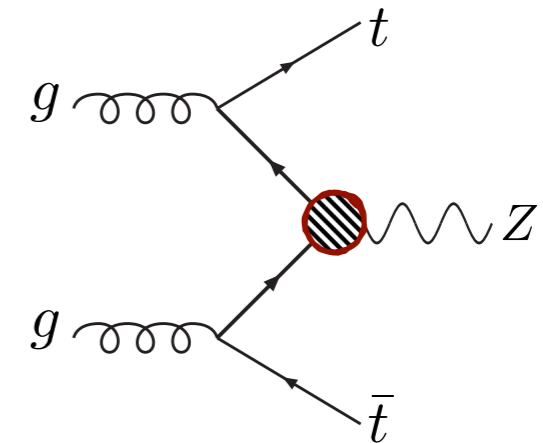
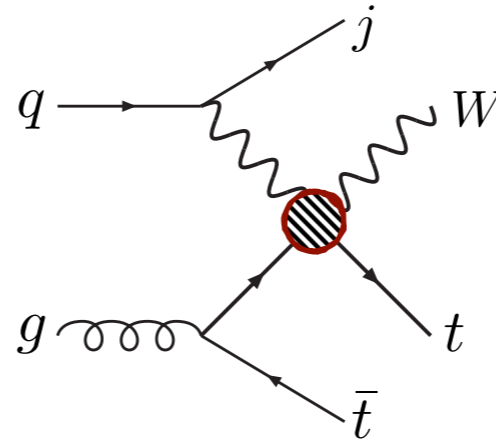
# LHC multilepton + jets “excesses”

Reinterpretation of cut-and-count CMS (1908.06463) 4-top search.

$$\frac{C_{tt}}{v^2} (\bar{t}_R \gamma_\mu t_R)^2$$



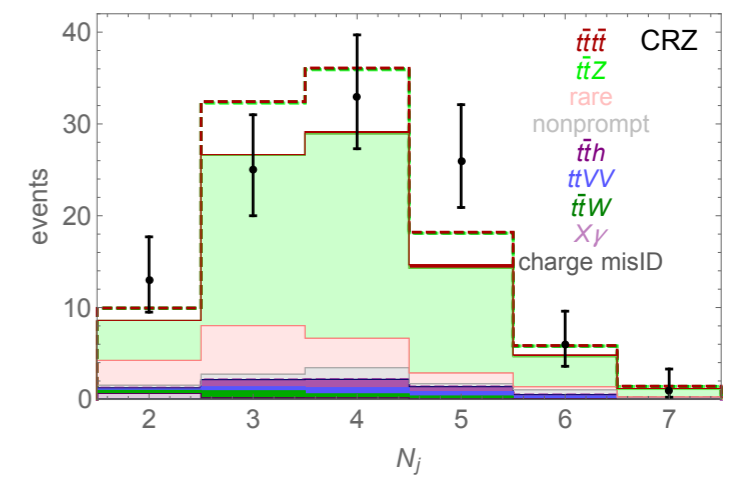
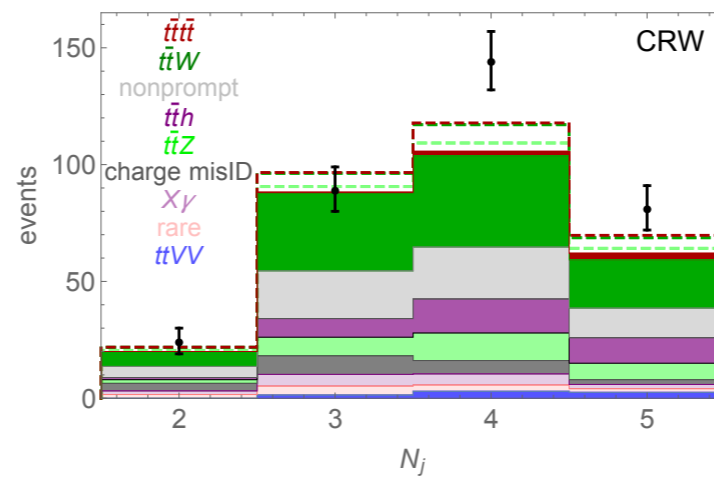
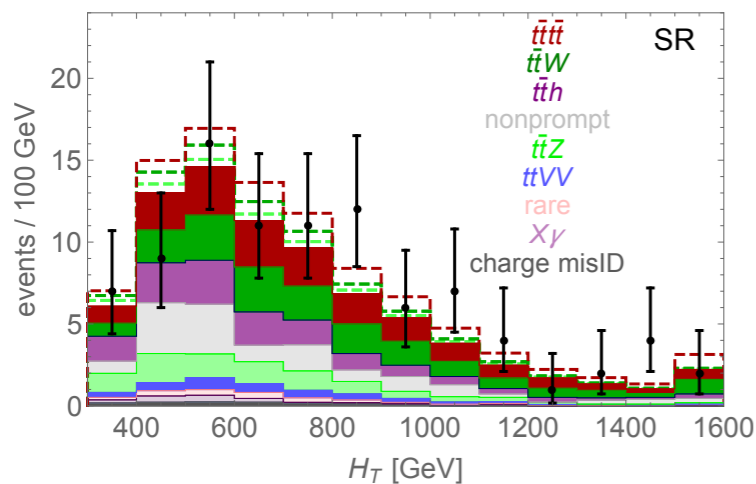
$$\frac{C_{Ht}}{v^2} i (H^\dagger D^\mu H) (\bar{t}_R \gamma_\mu t_R)$$



(Dror et al. '15, Frederix et al. '17, Maltoni et al. '19)

(missing)  $t\bar{t}$ -scattering contribution

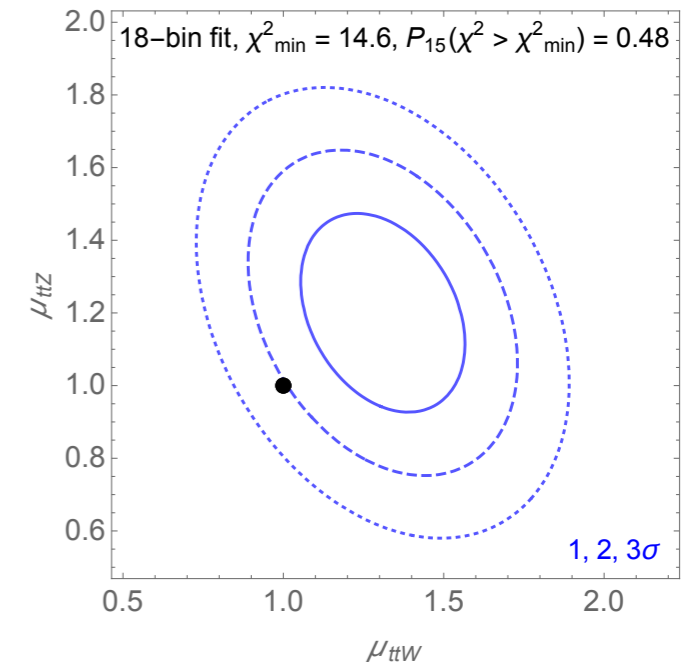
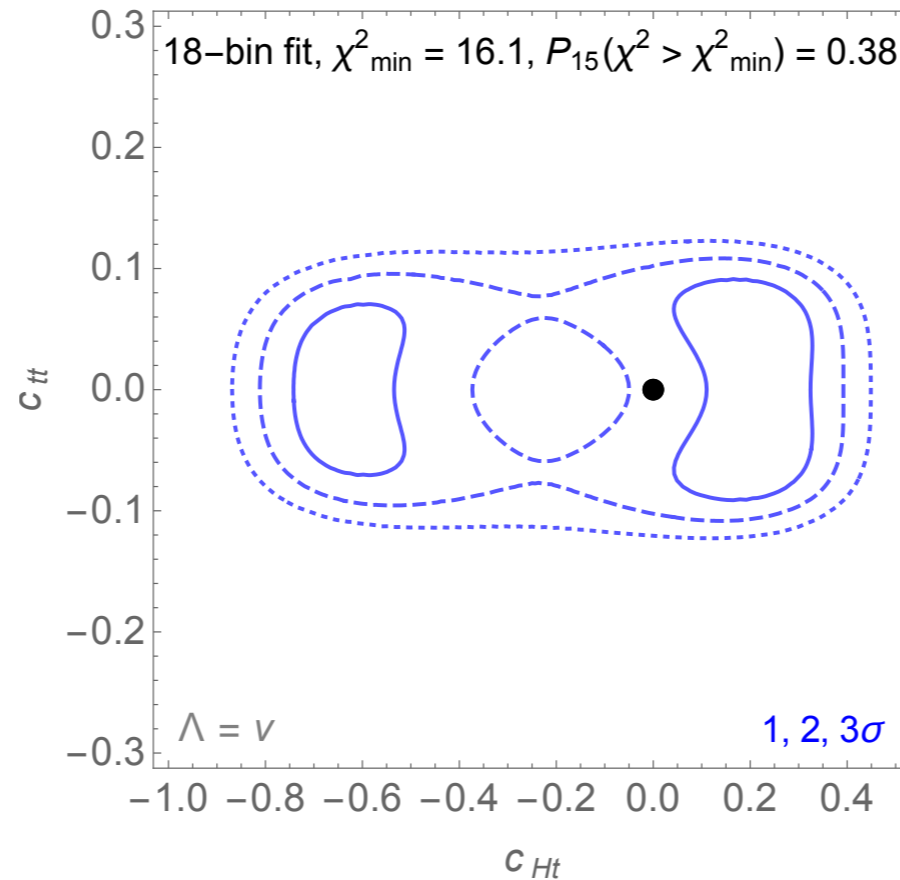
Joint fit to signal region (SR),  $t\bar{t}W$  control region (CRW) and  $t\bar{t}Z$  control region (CRZ).



# LHC multilepton + jets “excesses”

Fit points to sensible values of  $m_*/g_* \sim 0.75$  TeV.

Best fit point:  
 $(c_{Ht}, c_{tt}) \approx (0.2, \pm 0.05)$



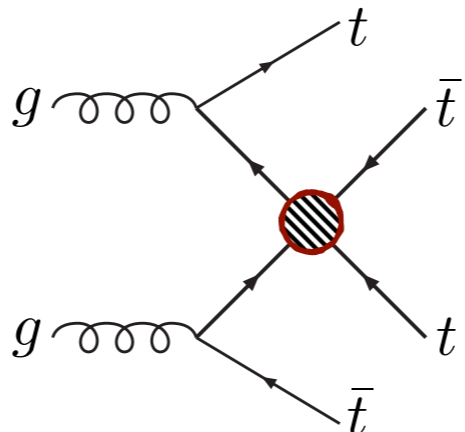
Goodness of fit similar to signal-strength rescaling.



Additional motivation to explore a strongly-interacting top quark at future colliders.

# Future hadron colliders: FCC-hh

Energy growth in strongly-coupled scenarios leads to clear enhancement of sensitivity.

$$\frac{c_{tt}}{m_*^2} (\bar{t}_R \gamma_\mu t_R)^2$$


$$\mathcal{M}_{tt} \sim \frac{g_*^2}{m_*^2} s$$

$$c_{tt} = g_*^2$$

□ **Same-sign di-lepton** (BR = 4.1%) and **tri-lepton** final states (BR = 2.6%) to suppress backgrounds.

□ Main irreducible backgrounds: 4-top (SM), top-pair +  $W$ ,  $Z$ ,  $b$ .

□ Larger relative SM 4-top rate than main backgrounds:  $\frac{\sigma_{100 \text{ TeV}}}{\sigma_{13 \text{ TeV}}} \Big|_{t\bar{t}t\bar{t}} \approx 350$   $\frac{\sigma_{100 \text{ TeV}}}{\sigma_{13 \text{ TeV}}} \Big|_{t\bar{t}W} \approx 40$

(Frederix, Pagani, Zaro '17)

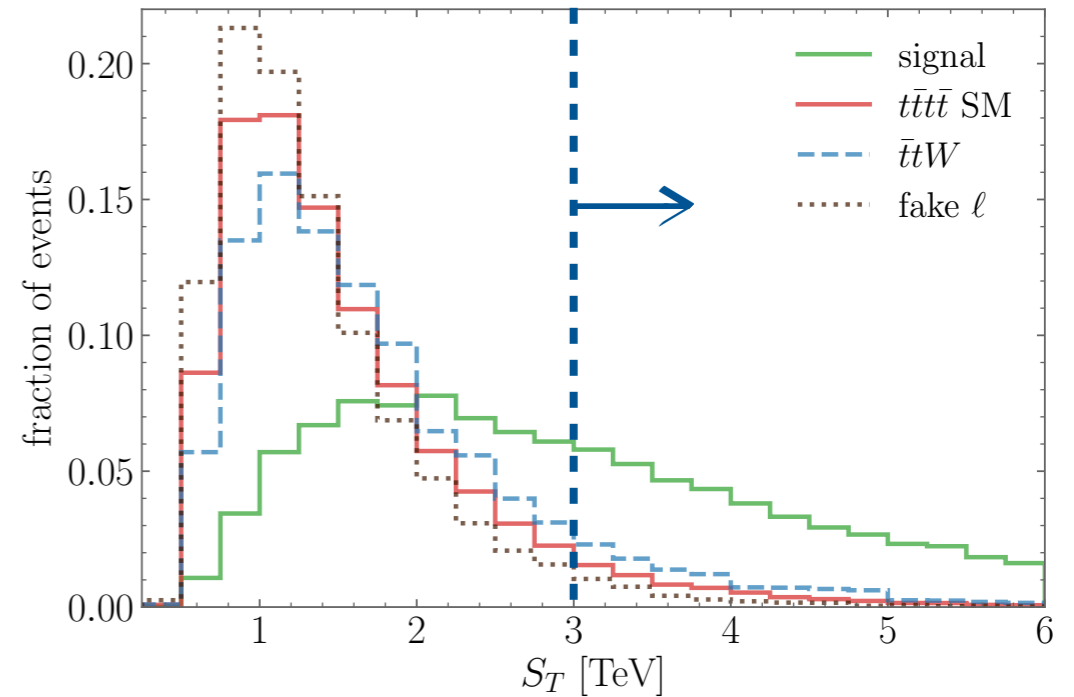
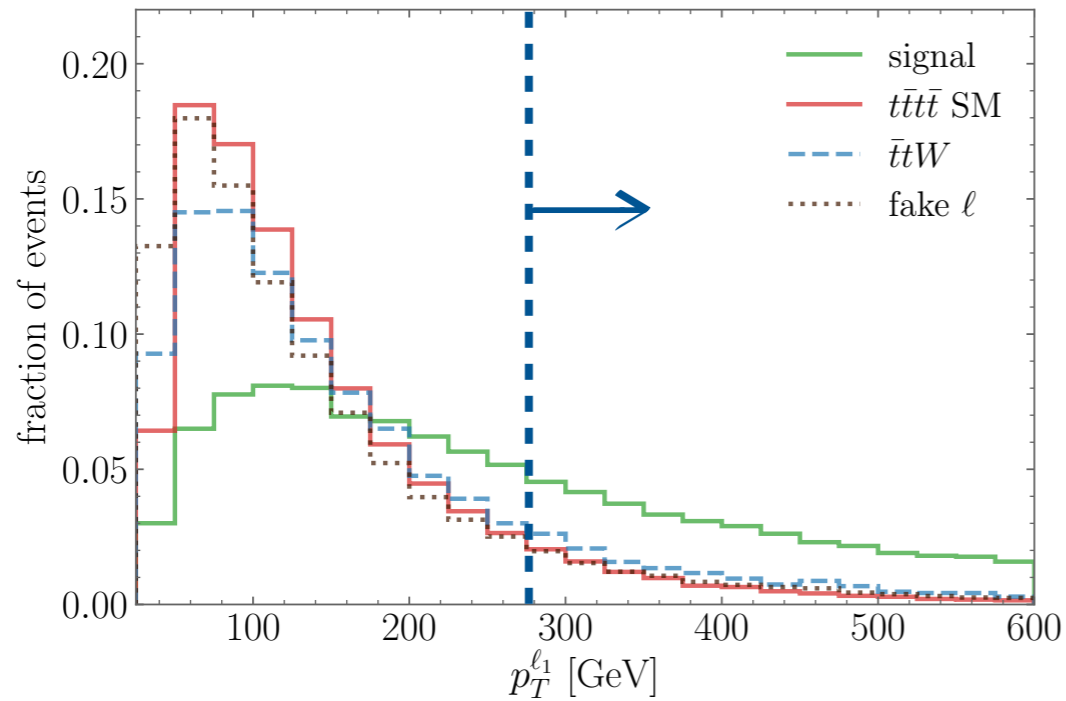
□ Fake-lepton/charge-flip reducible backgrounds estimated/validated with top-pair + jets LHC data.

□ Builds on ATLAS (1811.02305), CMS (1908.06463) and SM-theory 4-top analyses (Alvarez et al '16).

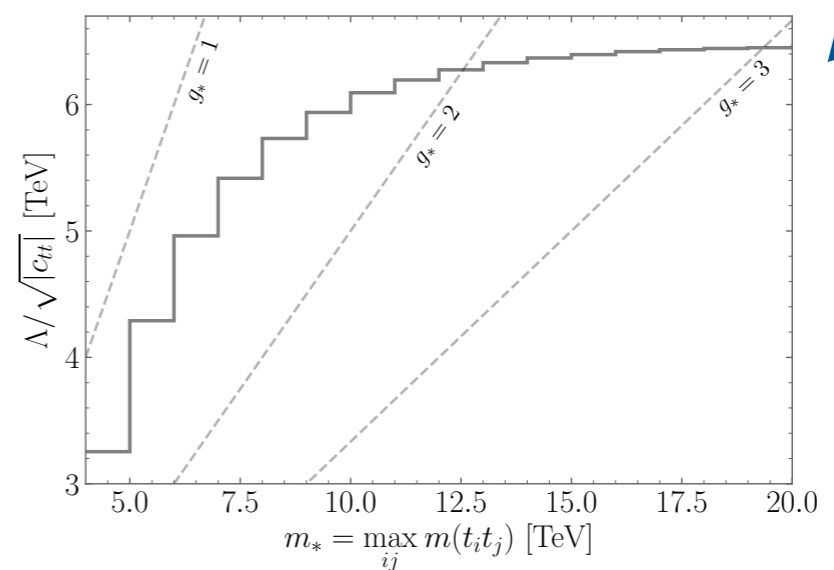
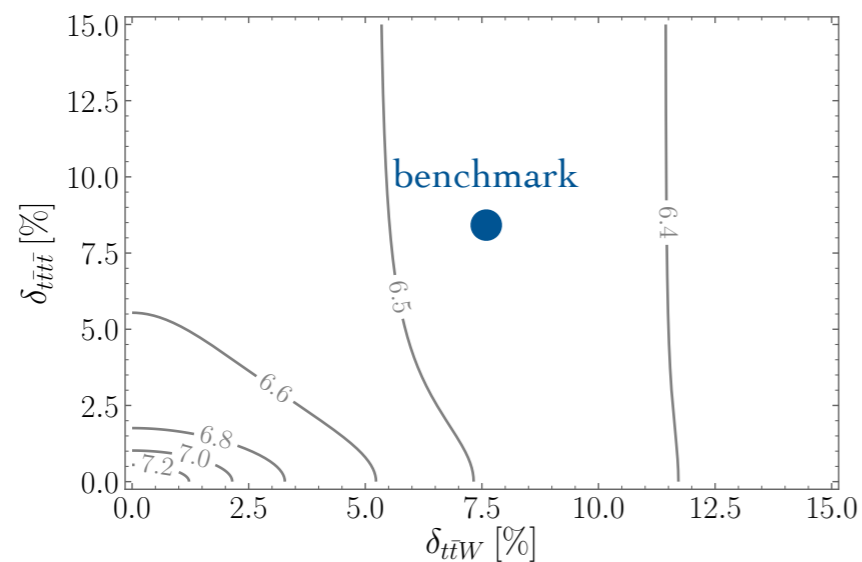
# Future hadron colliders: FCC-hh

Similar sensitivity for **same-sign di-lepton** and tri-lepton.

Baseline selection: exactly two SSL with  $p_T^{\ell_1, \ell_2} > 40, 25 \text{ GeV}$ ,  $\geq 5$  jets ( $\geq 3$  b-tagged),  $H_T > 400 \text{ GeV}$ .



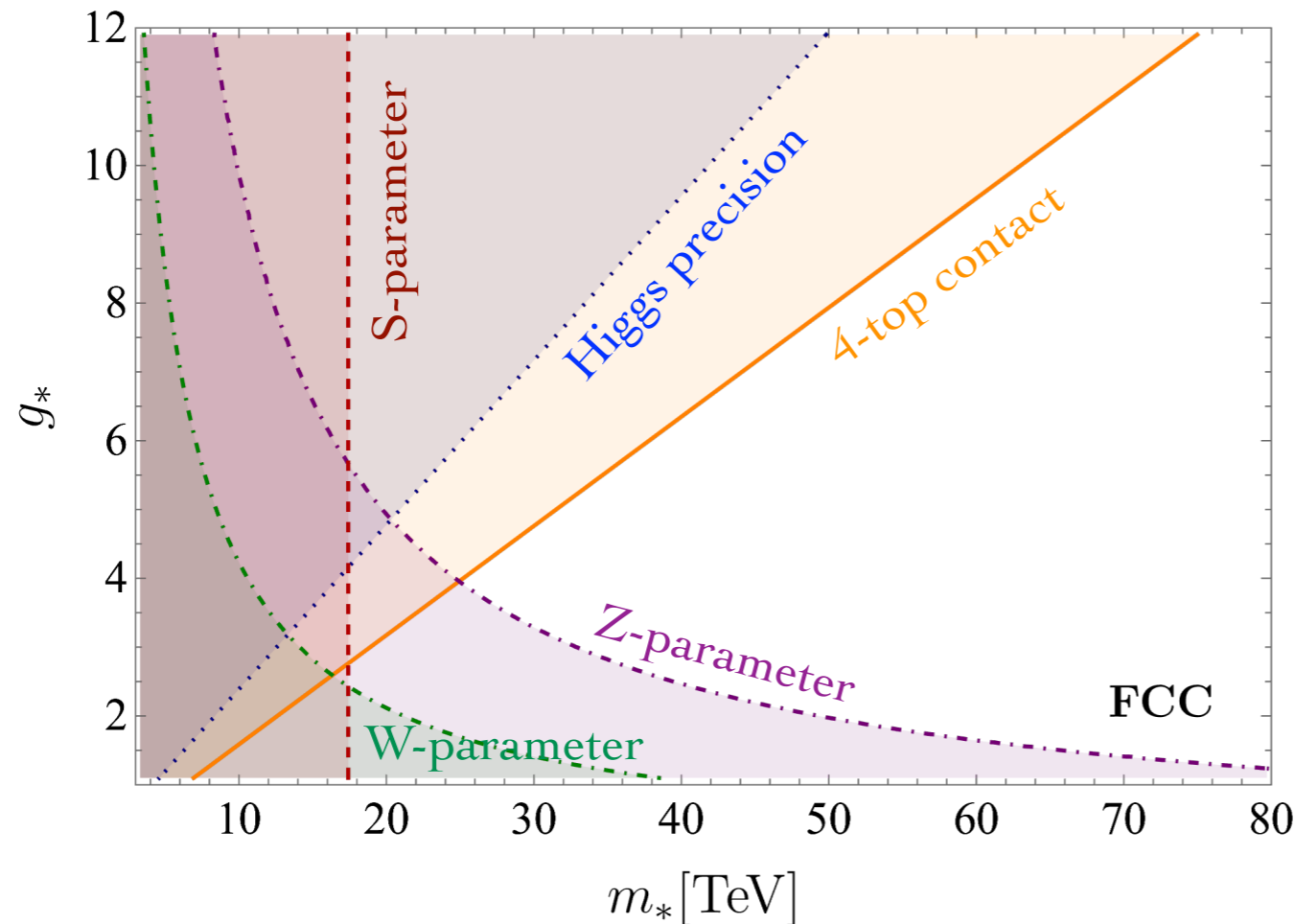
Checked dependence on background systematics, fake-lepton prob., EFT regime of validity.



# Top and Higgs compositeness: FCC

Dominant sensitivity to large compositeness scale/coupling via 4-top contact interactions;

$$c_{tt} = g_*^2$$



$$\frac{m_*}{g_*} > 6.5 \text{ TeV} \quad (\text{Banelli et al. '20})$$

$$\frac{m_*}{g_*} > 4.2 \text{ TeV} \quad (\text{de Blas et al. '19})$$

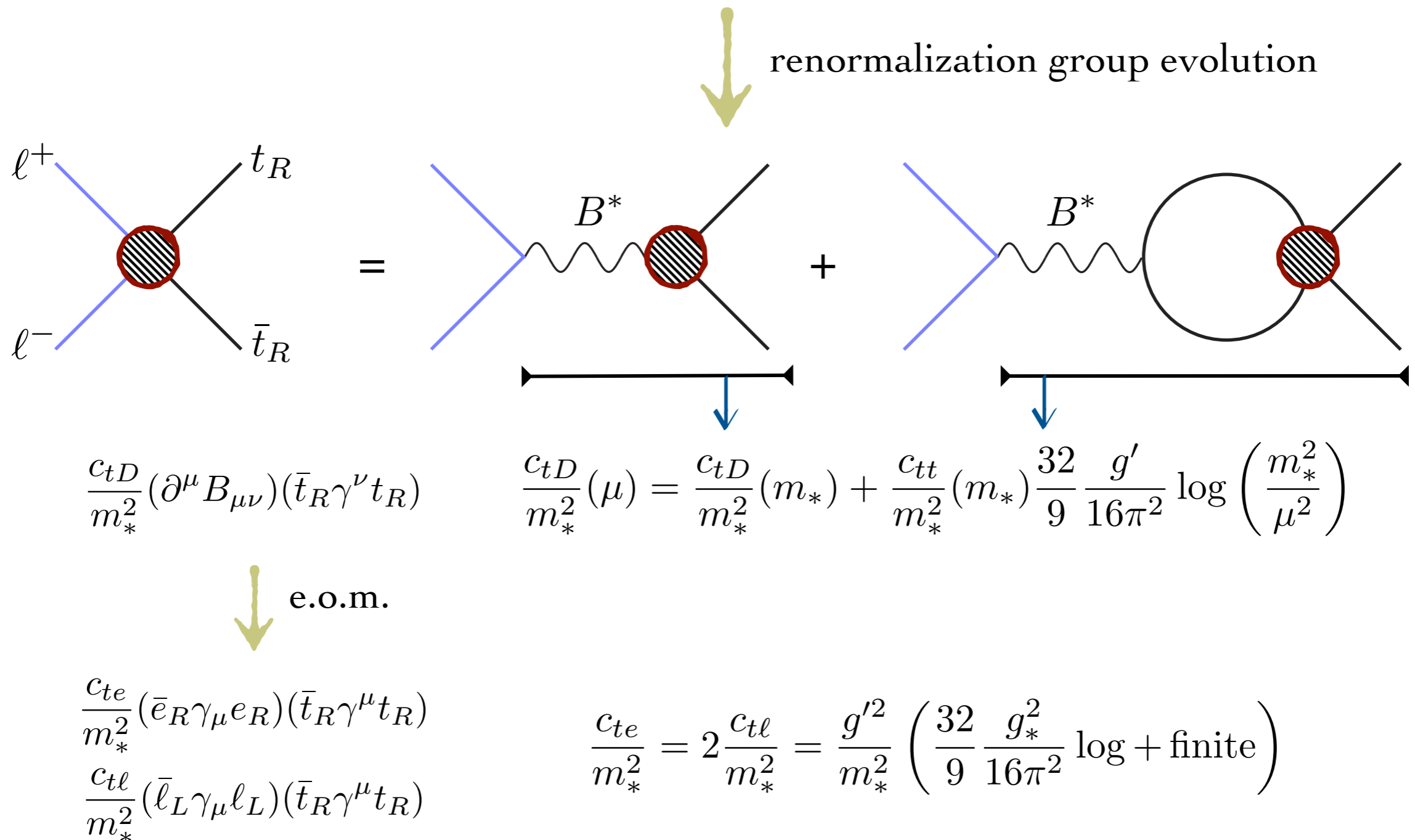
higher than Higgs couplings even if these are from full FCC (-ee/-hh) program.

■ Higgs precision:  $\frac{g_*^2}{m_*^2} \partial_\mu |H|^2 \partial^\mu |H|^2$

■ Z-parameter:  $\frac{g_s^2}{g_*^2 m_*^2} (D_\rho G_{\mu\nu})^2$

# Future lepton colliders

Not feasible to directly probe 4-top contact interactions at lepton colliders.



For strongly-coupled theories  $g_* \gg 1$ , RGE term leading contribution.

(Banelli et al. '20)



# Future lepton colliders

- Several c.o.m. energies and polarized beams is crucial to probe different operators.

$$\begin{aligned}
 \mathcal{M}_{\ell^+\ell^-\rightarrow t\bar{t}} &\sim \text{[Diagram 1]} + \text{[Diagram 2]} + \text{[Diagram 3]} \\
 &\sim \frac{g_*^2}{m_*^2} (H^\dagger D_\mu H) (\bar{t}_R \gamma^\mu t_R) \quad \sim \frac{y_t g}{m_*^2} \bar{q}_L H \sigma_{\mu\nu} W^{\mu\nu} t_R \quad \sim \frac{c_{te}}{m_*^2} (\bar{e}_R \gamma_\mu e_R) (\bar{t}_R \gamma^\mu t_R) \\
 &\sim \frac{g_*^2}{m_*^2} m_W^2 \quad \sim \frac{g^2}{m_*^2} m_t \sqrt{s} \quad \sim \frac{g_*^2}{m_*^2} s
 \end{aligned}$$

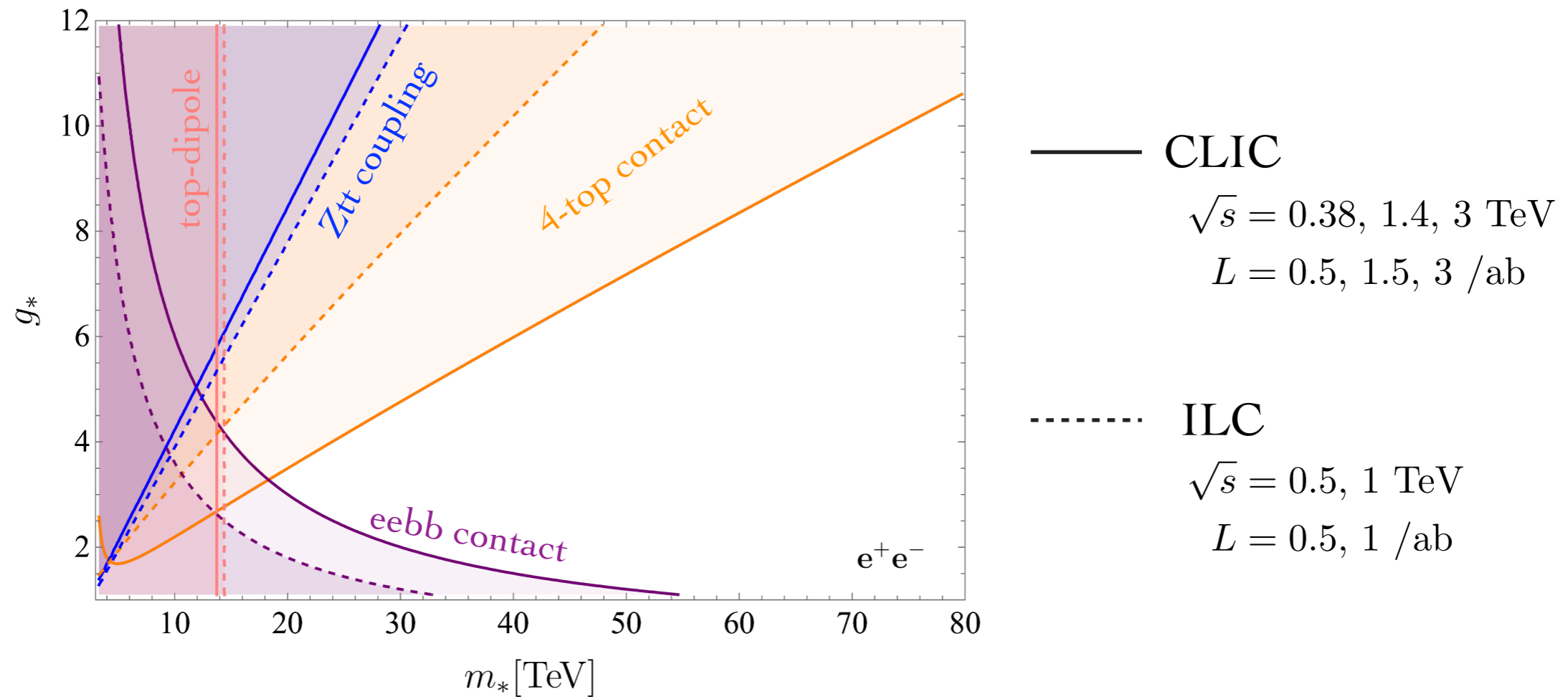
Contact interactions at high-energy colliders dominate the sensitivity to  $g_*/m_*$ .

- Bottom pair-production provides sensitivity to the weakly coupled regime  $g_* \sim 1$ .

$$\begin{aligned}
 \mathcal{M}_{\ell^+\ell^-\rightarrow b\bar{b}} &\sim \text{[Diagram 4]} \sim \frac{y_t^2 g^2}{g_*^2 m_*^2} s \\
 &\sim \frac{y_t^2 g^2}{g_*^2 m_*^2} (\bar{\ell}_L \gamma_\mu \ell_L) (\bar{q}_L \gamma^\mu q_L)
 \end{aligned}$$

# Future lepton colliders: ILC vs CLIC

High c.o.m. energies great advantage in (indirectly) probing most of parameter space.

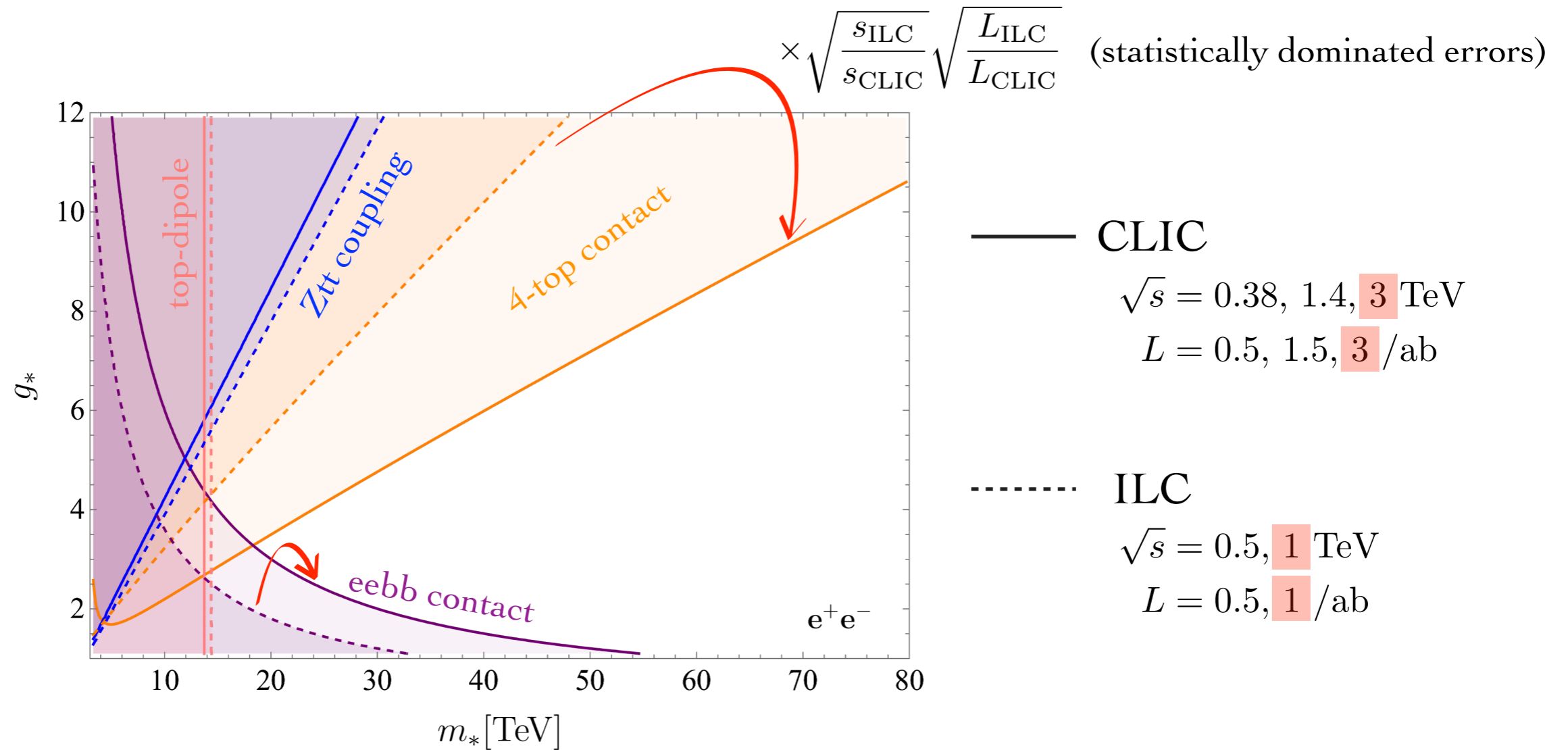


Based on reinterpretation of results for sensitivity to the individual operators: [Durieux, Perelló, Vos, Zhang '18](#).  
See also [Durieux, Matsedonskyi '18](#).

Contact interactions and highest-energy runs dominate the sensitivity.

# Future lepton colliders: ILC vs CLIC

High c.o.m. energies great advantage in (indirectly) probing most of parameter space.



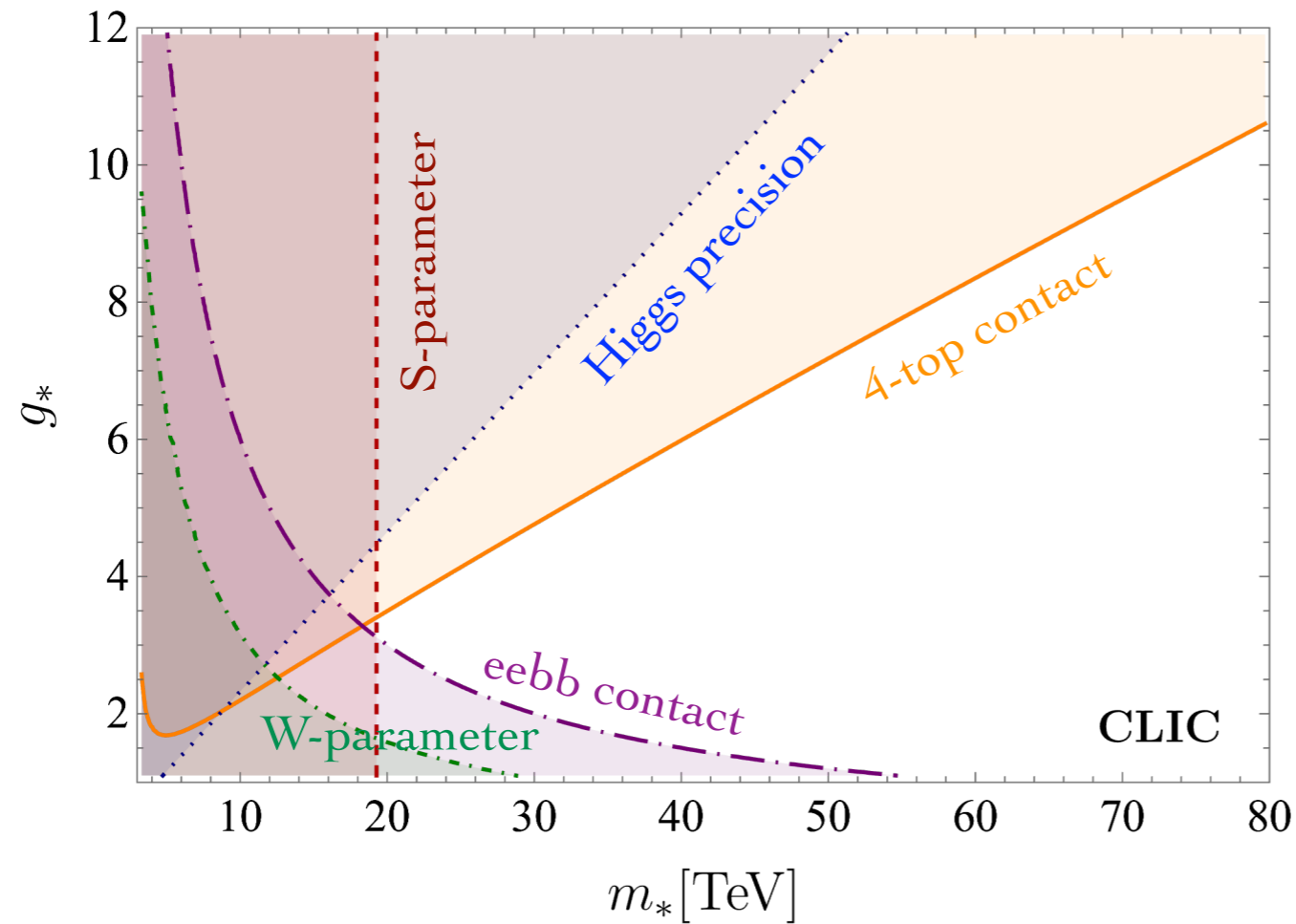
Based on reinterpretation of results for sensitivity to the individual operators: [Durieux, Perelló, Vos, Zhang '18](#).  
 See also [Durieux, Matsedonskyi '18](#).

Contact interactions and highest-energy runs dominate the sensitivity.

# Top and Higgs compositeness: CLIC

Dominant sensitivity to large compositeness scale/coupling via 4-top contact interactions.

$$c_{tt} = g_*^2$$



$$\frac{m_*}{g_*} > 7.7 \text{ TeV}$$

(Banelli et al. '20)

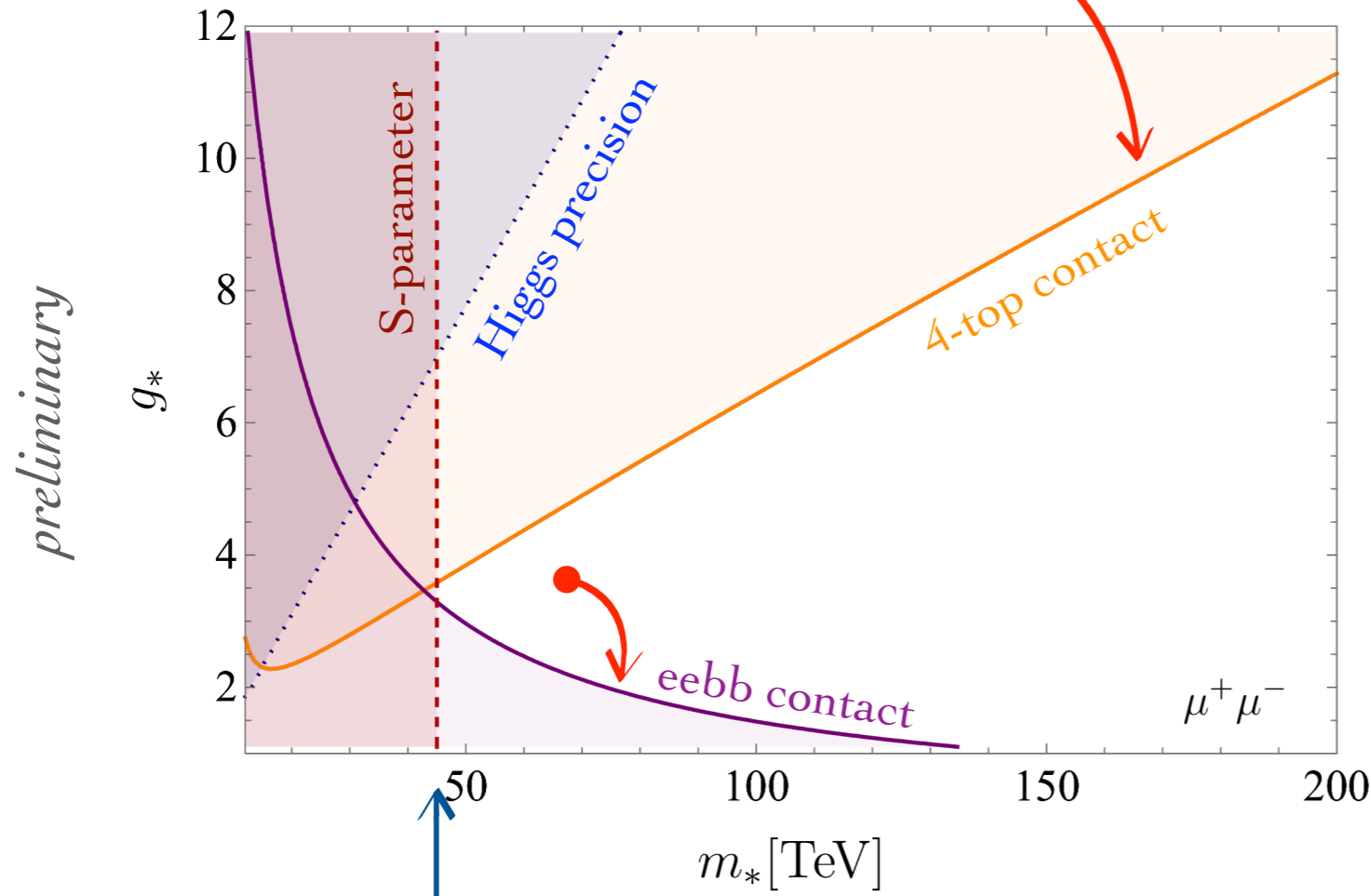
$$\frac{m_*}{g_*} > 4.3 \text{ TeV}$$

(de Blas et al. '19)

# Top and Higgs compositeness: muon collider

Same conclusion at a high-energy muon collider, with larger reach!

$$\sqrt{s_{\mu^+\mu^-}} = 10 \text{ TeV} \quad L_{\mu^+\mu^-} = 10 / \text{ab} \quad \times \sqrt{\frac{s_{\text{CLIC}}}{s_{\mu^+\mu^-}}} \sqrt{\frac{L_{\text{CLIC}}}{L_{\mu^+\mu^-}}} \quad (\text{statistically dominated errors})$$



$$\frac{m_*}{g_*} \gtrsim 18 \text{ TeV}$$

$$\frac{m_*}{g_*} \gtrsim 6.4 \text{ TeV}$$

(Han et al. '20)

(Buttazzo et al. '20)

Main assumption is that uncertainty remains statistically dominated.

# Conclusions/Outlook

● Top (effective) compositeness is a very motivated target for high-energy colliders.

In particular because of its connection to the origin of the electroweak scale.

---

● Current LHC measurements are already (intriguingly) interesting.

Probes of genuine strong 4-top production competitive with Higgs precision.

Pattern of mild excesses in multi-lepton + jets deserve closer inspection.

---

● Future colliders would provide very powerful tests of a strongly-interacting top.

Hadron colliders, directly via strong  $tt$ -scattering in 4-top production.

Lepton colliders, indirectly via RGE effects in top-pair production.

$$\frac{m_*}{g_*} \Big|_{\text{LHC}, 36/\text{fb}}^{4t} \gtrsim 0.73 \text{ TeV} \quad \frac{m_*}{g_*} \Big|_{\text{FCC-hh}}^{4t} \gtrsim 6.5 \text{ TeV} \quad \frac{m_*}{g_*} \Big|_{\text{CLIC } 3}^{t\bar{t}} \gtrsim 7.7 \text{ TeV} \quad \frac{m_*}{g_*} \Big|_{\text{muon } 10}^{t\bar{t}} \gtrsim 18 \text{ TeV}$$

Exploring levels of electroweak-scale fine-tuning below the per-mille level.

Thank you.



