

# Chiral Magnetic Effect and the Isobar run

Dmitri Kharzeev



U.S. DEPARTMENT OF  
**ENERGY**

Office of Science



Center for Nuclear Theory  
Stony Brook **University**



**Brookhaven**  
National Laboratory

# *Chirality: the definition*

Greek word: χείρ (cheir) - hand

Lord Kelvin (1893):

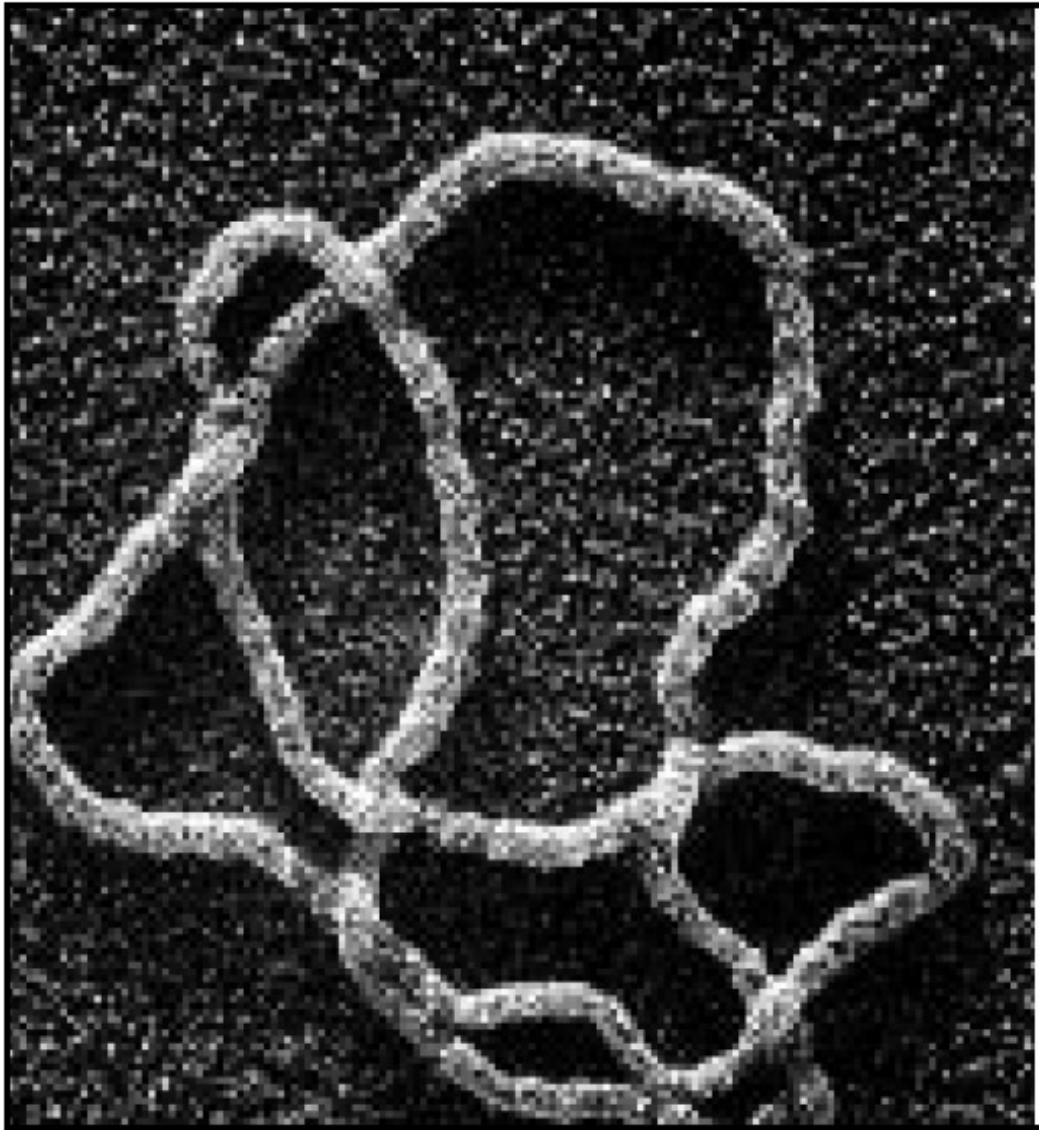
**“I call any geometrical figure, or groups of points, chiral, and say it has chirality, if its image in a plane mirror, ideally realized, cannot be brought to coincide with itself.”**



# Chirality: DNA



# Chirality: DNA



De Witt Sumners, Notices of the AMS, 1995

# Chirality in subatomic world: chiral fermions



Fermions:  
E. Fermi, 1925



Dirac equation:  
P. Dirac, 1928



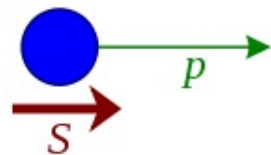
Weyl fermions:  
H. Weyl, 1929



Majorana fermions:  
1937

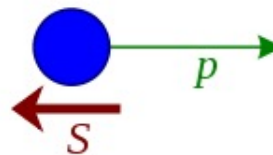
$$(i\partial - m)\psi = 0$$

Right-handed:



$$\sigma^\mu \partial_\mu \psi = 0 \quad -i\partial\psi + m\psi_c = 0$$

Left-handed:

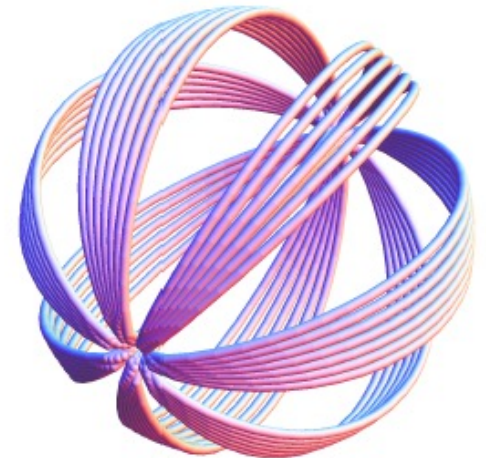


$$\psi_c := i\psi^*$$

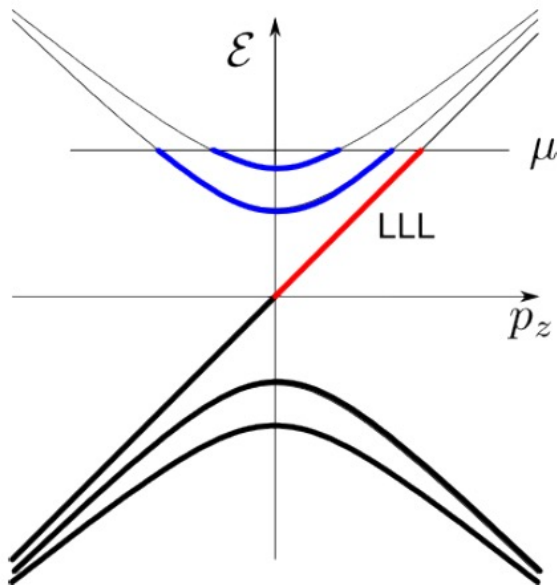


## Chirality of gauge fields

Gauge fields can form **chiral knots** – for example, knots of magnetic flux in magnetohydrodynamics (magnetic helicity), characterized by Chern-Simons number



# Chiral anomaly: chirality transfer from fermions to gauge fields (or vice versa)



Right-handed fermion on the lowest Landau level in a magnetic field

Right-handed chiral knot of magnetic flux

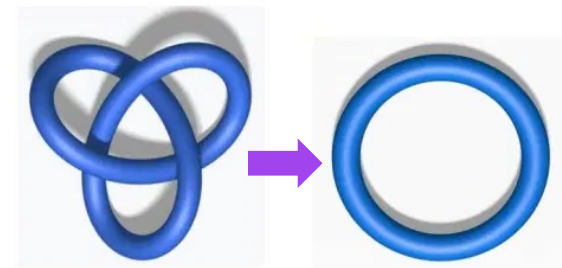
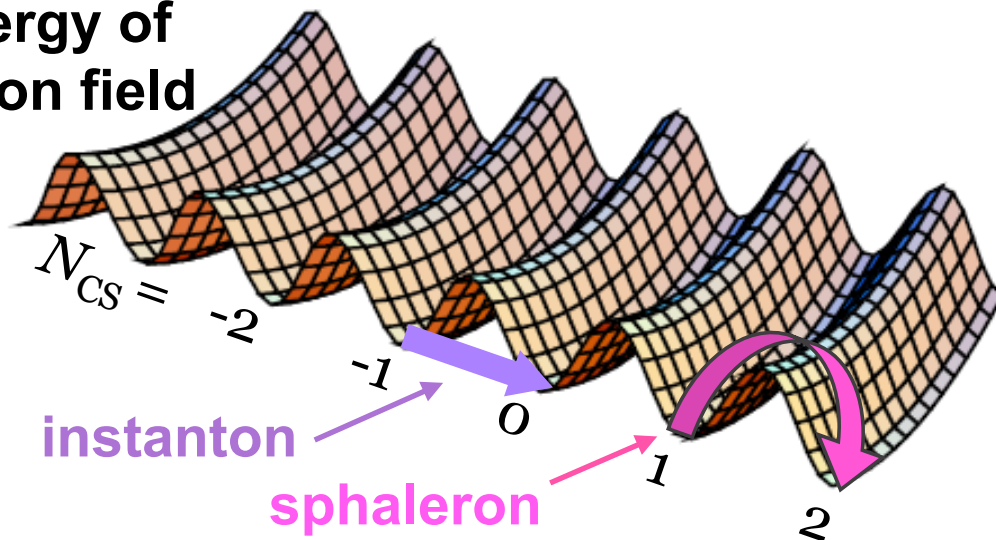
# Chirality in the vacuum of the Standard Model

The instanton and sphaleron solutions in non-Abelian gauge theories describe transitions between topological sectors of the vacuum marked by different integer values of the Chern-Simons number:

$$N_{CS} \equiv \int d^3x K_0 \quad K_\mu = \frac{1}{16\pi^2} \epsilon_{\mu\alpha\beta\gamma} \left( A_\alpha^a \partial_\beta A_\gamma^a + \frac{1}{3} f^{abc} A_\alpha^a A_\beta^b A_\gamma^c \right)$$

QCD (Quantum ChromoDynamics) vacuum:

Energy of  
gluon field





# Chirality and the origin of Matter-Antimatter asymmetry in the Universe

Sakharov conditions for baryogenesis:

1. Baryon number violation
2. C and CP symmetries violation
3. Interactions out of thermal equilibrium



A.D. Sakharov, 1967

VIOLETION OF CP INVARIANCE, C ASYMMETRY, AND BARYON ASYMMETRY OF THE UNIVERSE

A. D. Sakharov

Submitted 23 September 1966

ZhETF Pis'ma 5, No. 1, 32-35, 1 January 1967

The theory of the expanding Universe, which presupposes a superdense initial state of matter, apparently excludes the possibility of macroscopic separation of matter from anti-matter; it must therefore be assumed that there are no antimatter bodies in nature, i.e., the Universe is asymmetrical with respect to the number of particles and antiparticles

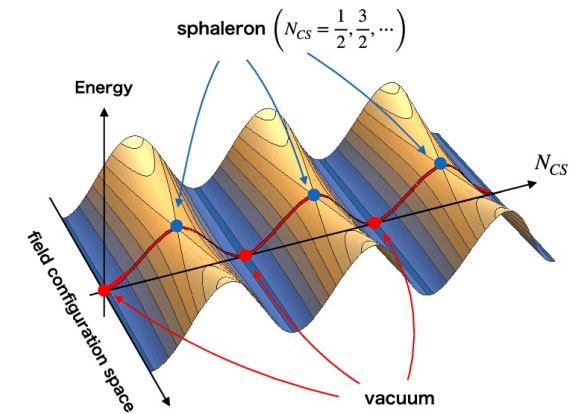
# Chirality and the origin of Matter-Antimatter asymmetry in the Universe

Within the Standard Model, baryon number violating sphaleron transitions in hot electroweak plasma operate in the expanding Early Universe.

Can we study these processes in the lab?

No – the temperature of electroweak phase transition is too high,  $T_{EW} \approx 160 \text{ GeV} \sim 10^{15} \text{ K}$

But: we can study analogous processes in another non-Abelian gauge theory of the Standard Model – QCD!



Graphics: Hamada, Kikuchi, '20

# Generation of chirality in the QCD plasma

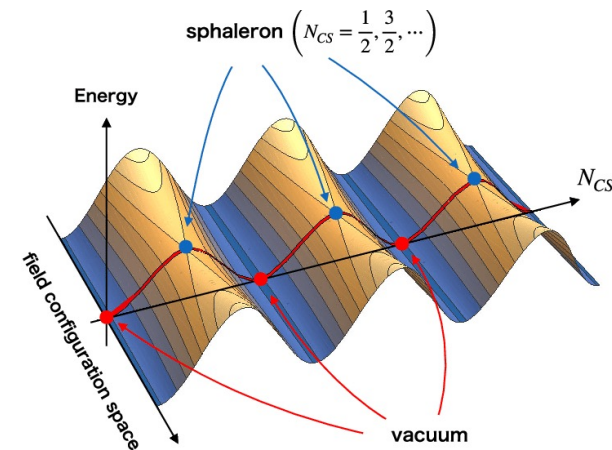
The temperature of QCD phase transition is 1,000 times lower:

$$T_{QCD} \approx 160 \text{ MeV} \sim 10^{12} \text{ K}$$

QCD plasma can be produced and studied in the ongoing heavy ion experiments at RHIC (BNL) and LHC (CERN).

QCD sphalerons induce chirality violation (instead of baryon number violation), and rapid expansion of the produced plasma drives it out of thermal equilibrium –

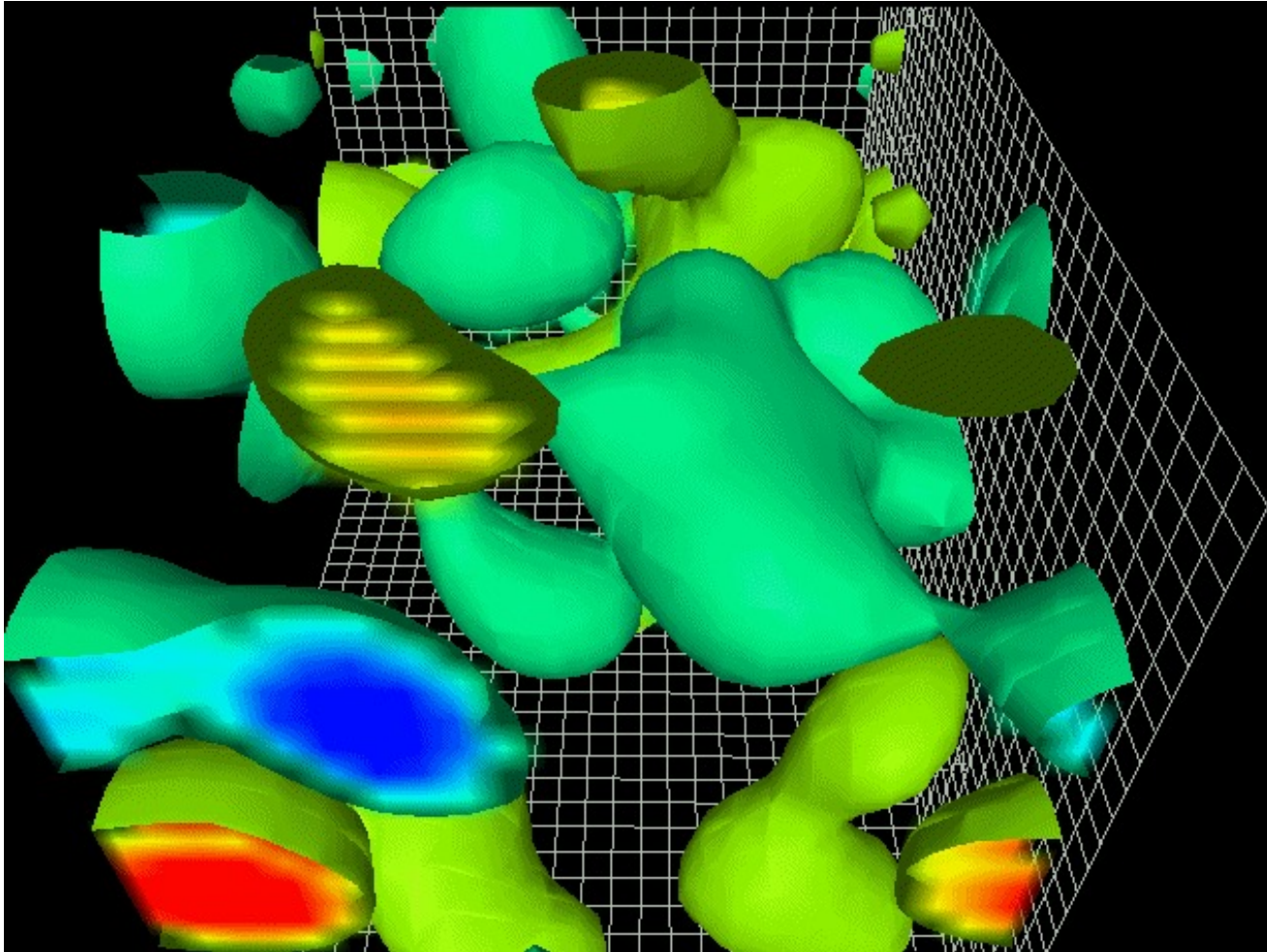
thus we expect to see a substantial **generation of net chirality, of fluctuating sign, in heavy ion collisions!**



Graphics: Hamada, Kikuchi, '20

# Topological transitions in QCD vacuum

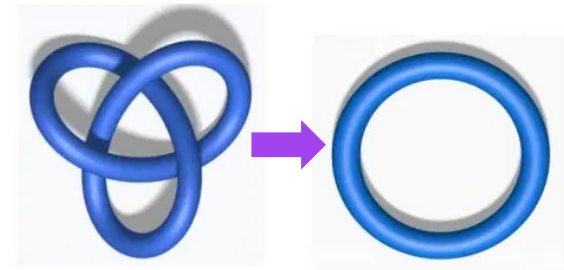
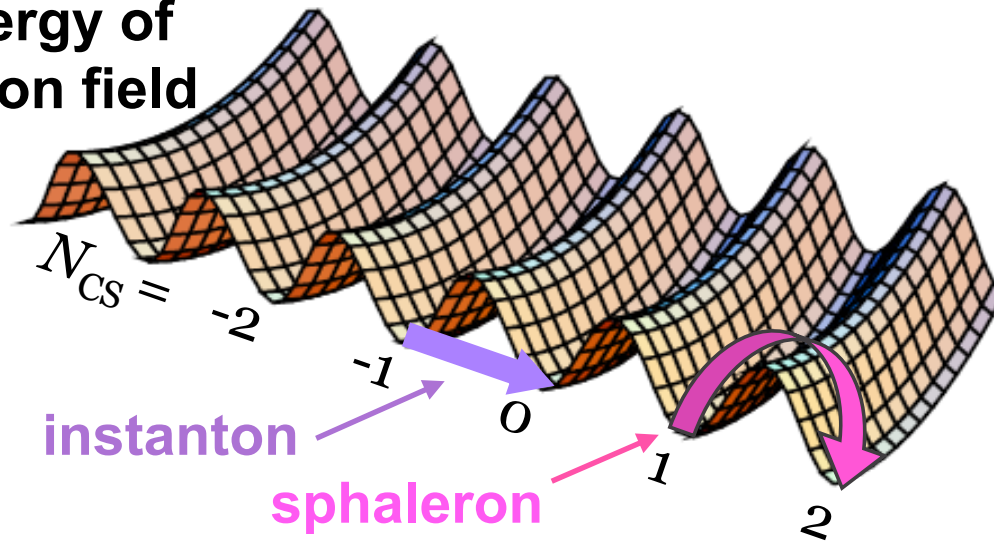
D. Leinweber



# Chirality in the vacuum of the Standard Model

Topological chirality-changing transitions between the vacuum sectors of QCD are responsible for the spontaneous chiral symmetry breaking and thus most of the mass of visible Universe.

**Energy of  
gluon field**



**Is it possible to directly observe these  
chirality-changing transitions in experiment?**

# Detecting the topological structure of QCD vacuum

Topological transitions in the QCD plasma change chirality of quarks. However, quarks are confined into hadrons, and their chirality cannot be detected in heavy ion experiments.

Therefore, to observe these chirality-changing transitions we have to find a way to convert chirality of quarks into something observable – perhaps, a (fluctuating) **electric dipole moment of the QCD plasma**? This would require an external magnetic field or an angular momentum.

## Parity violation in hot QCD: Why it can happen, and how to look for it

Dmitri Kharzeev

*Physics Department, Brookhaven National Laboratory, Upton, NY 11973-5000, USA*

Received 23 December 2004; received in revised form 27 October 2005; accepted 23 November 2005

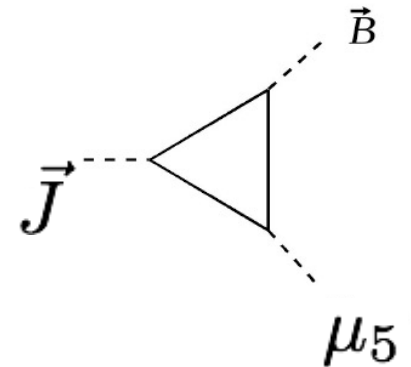
# Chiral Magnetic Effect

DK'04; DK, A. Zhitnitsky '07; DK, L.McLerran, H.Warringa '07; K.Fukushima, DK, H.Warringa, "Chiral magnetic effect" PRD'08; Review and list of refs: DK, arXiv:1312.3348 [Prog.Part.Nucl.Phys]

Chiral chemical potential is formally equivalent to a background chiral gauge field:  $\mu_5 = A_5^0$

In this background, and in the presence of  $\vec{B}$ , vector e.m. current is generated:

$$\partial_\mu J^\mu = \frac{e^2}{16\pi^2} \left( F_L^{\mu\nu} \tilde{F}_{L,\mu\nu} - F_R^{\mu\nu} \tilde{F}_{R,\mu\nu} \right)$$



Compute the current through

$$J^\mu = \frac{\partial \log Z[A_\mu, A_\mu^5]}{\partial A_\mu(x)}$$

**Absent in Maxwell theory!**

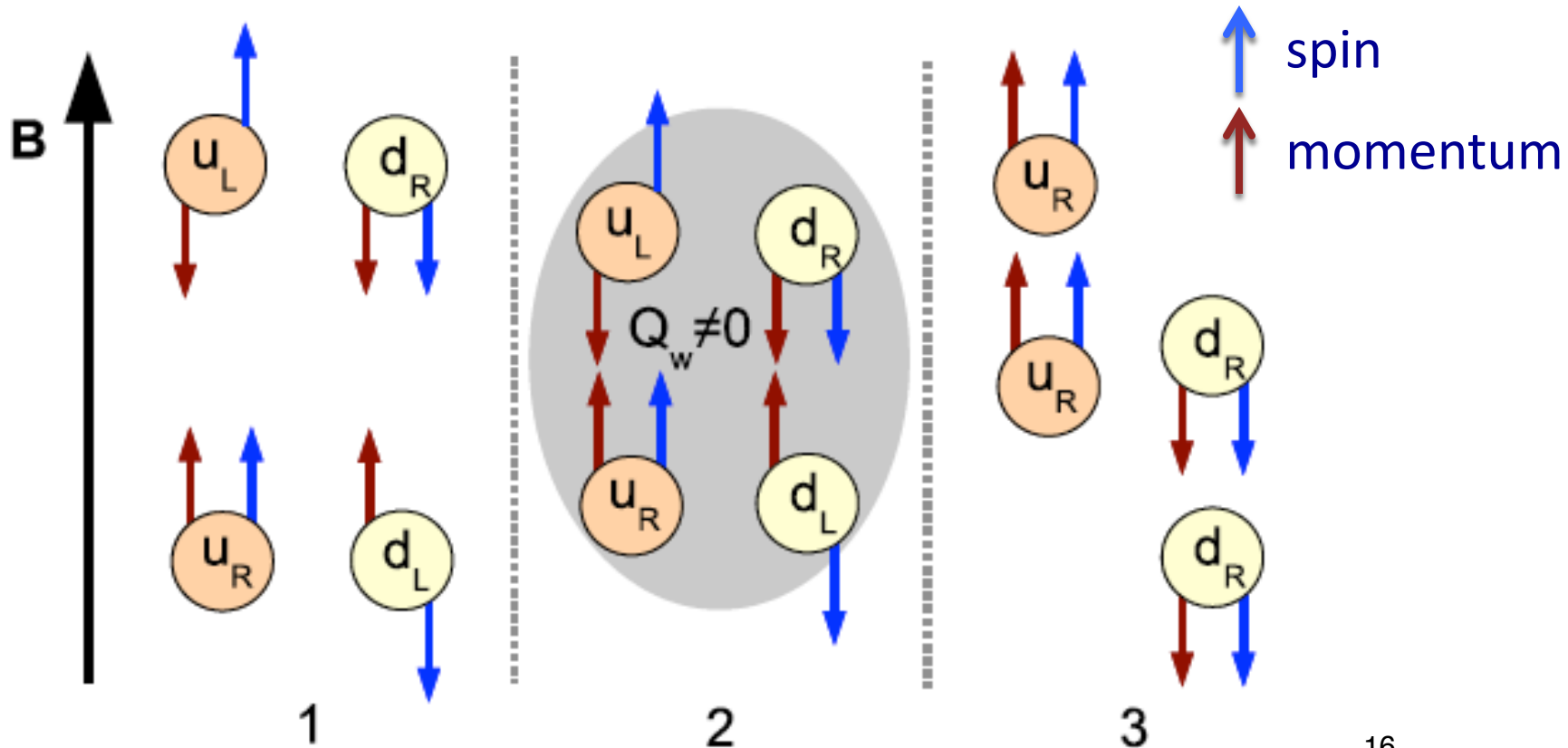
$$\vec{J} = \frac{e^2}{2\pi^2} \mu_5 \vec{B}$$

Coefficient is fixed by the chiral anomaly, no corrections

**Chirally imbalanced system is a non-equilibrium, steady state**

# Chirality in 3D: the Chiral Magnetic Effect

chirality + magnetic field = current





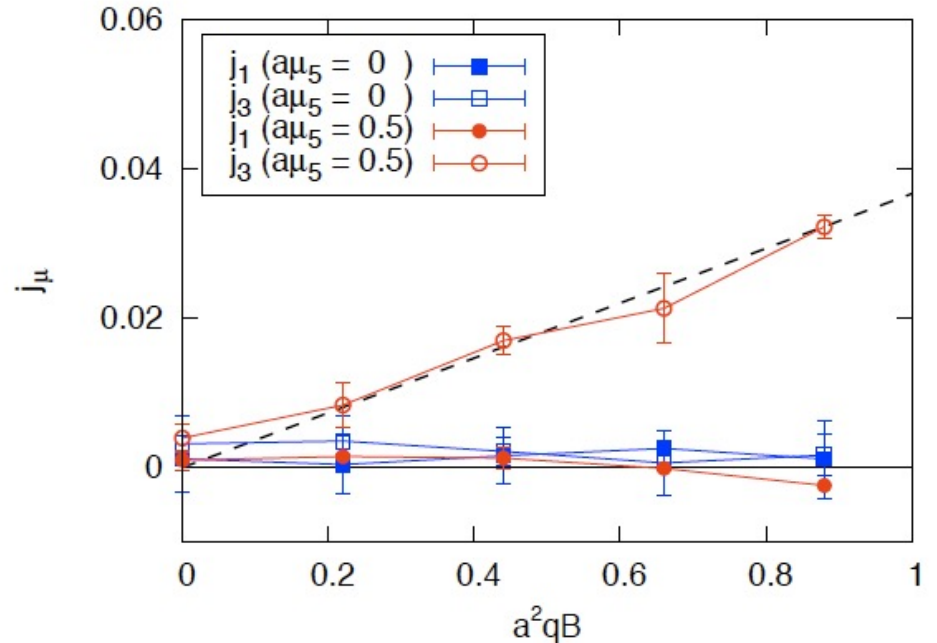
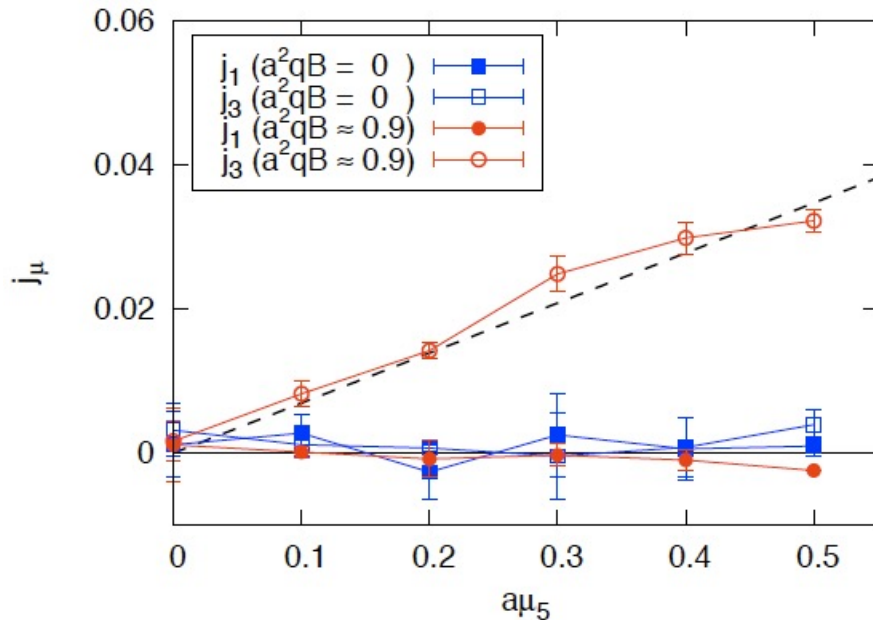
## Chiral magnetic effect in lattice QCD with chiral chemical potential

Arata Yamamoto

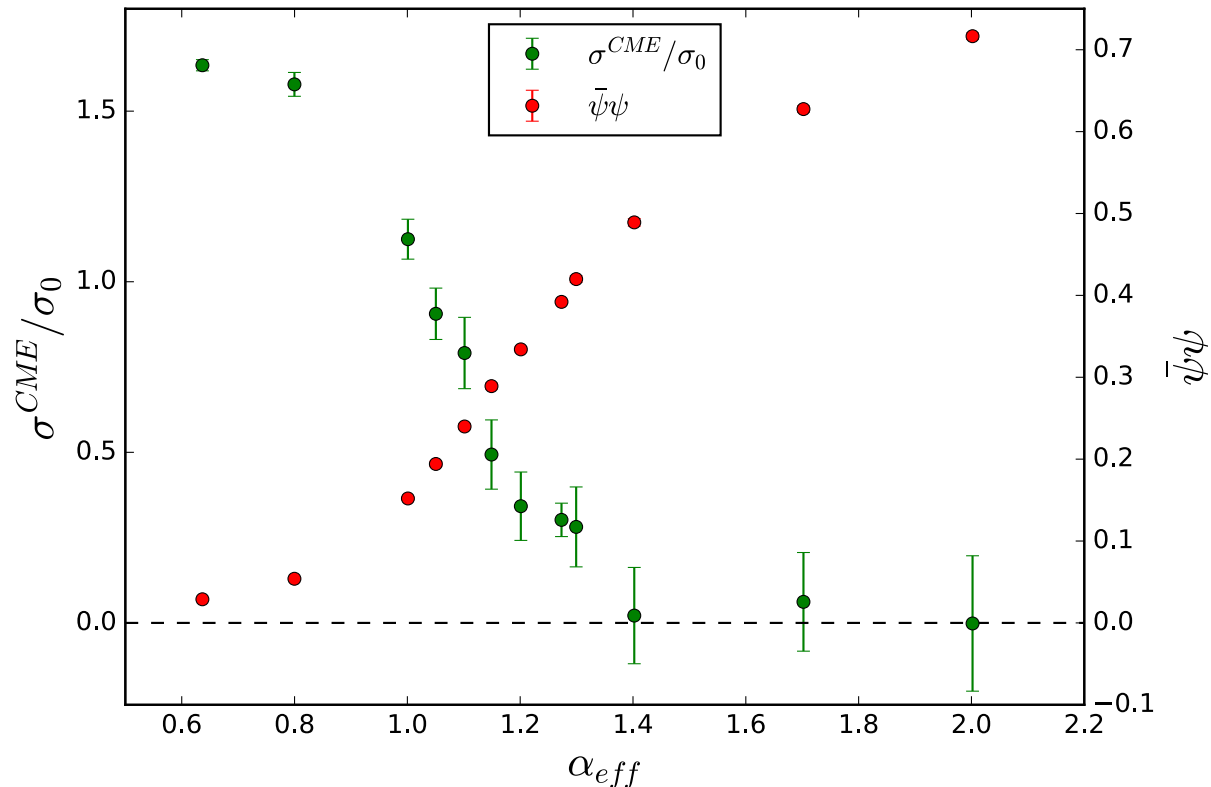
*Department of Physics, The University of Tokyo, Tokyo 113-0033, Japan*

(Dated: May 3, 2011)

We perform a first lattice QCD simulation including two-flavor dynamical fermion with chiral chemical potential. Because the chiral chemical potential gives rise to no sign problem, we can exactly analyze a chirally asymmetric QCD matter by the Monte Carlo simulation. By applying an external magnetic field to this system, we obtain a finite induced current along the magnetic field, which corresponds to the chiral magnetic effect. The obtained induced current is proportional to the magnetic field and to the chiral chemical potential, which is consistent with an analytical prediction.



# Chiral magnetic effect as a signature of chiral symmetry restoration



V.Braguta et al,  
arxiv:1704.07132,  
[PRD]

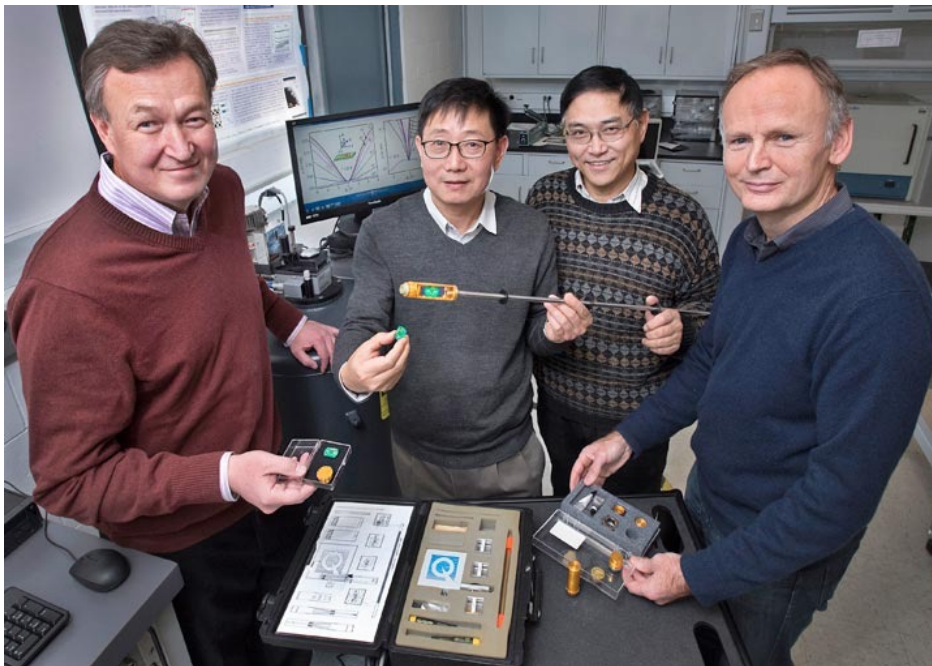
The spontaneous breaking of chiral symmetry does not allow the chiral magnetic current to propagate

# CME in condensed matter:

## Observation of the chiral magnetic effect in $\text{ZrTe}_5$

Qiang Li,<sup>1</sup> Dmitri E. Kharzeev,<sup>2,3</sup> Cheng Zhang,<sup>1</sup> Yuan Huang,<sup>4</sup> I. Pletikosić,<sup>1,5</sup>  
A. V. Fedorov,<sup>6</sup> R. D. Zhong,<sup>1</sup> J. A. Schneeloch,<sup>1</sup> G. D. Gu,<sup>1</sup> and T. Valla<sup>1</sup>

BNL - Stony Brook - Princeton - Berkeley



Nature Phys.  
12 (2016) 550



arXiv:1412.6543 [cond-mat.str-el]

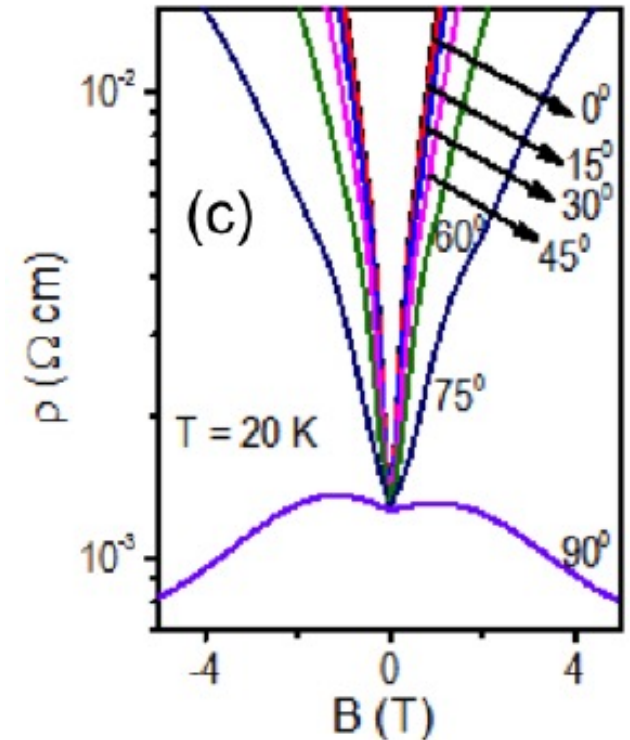
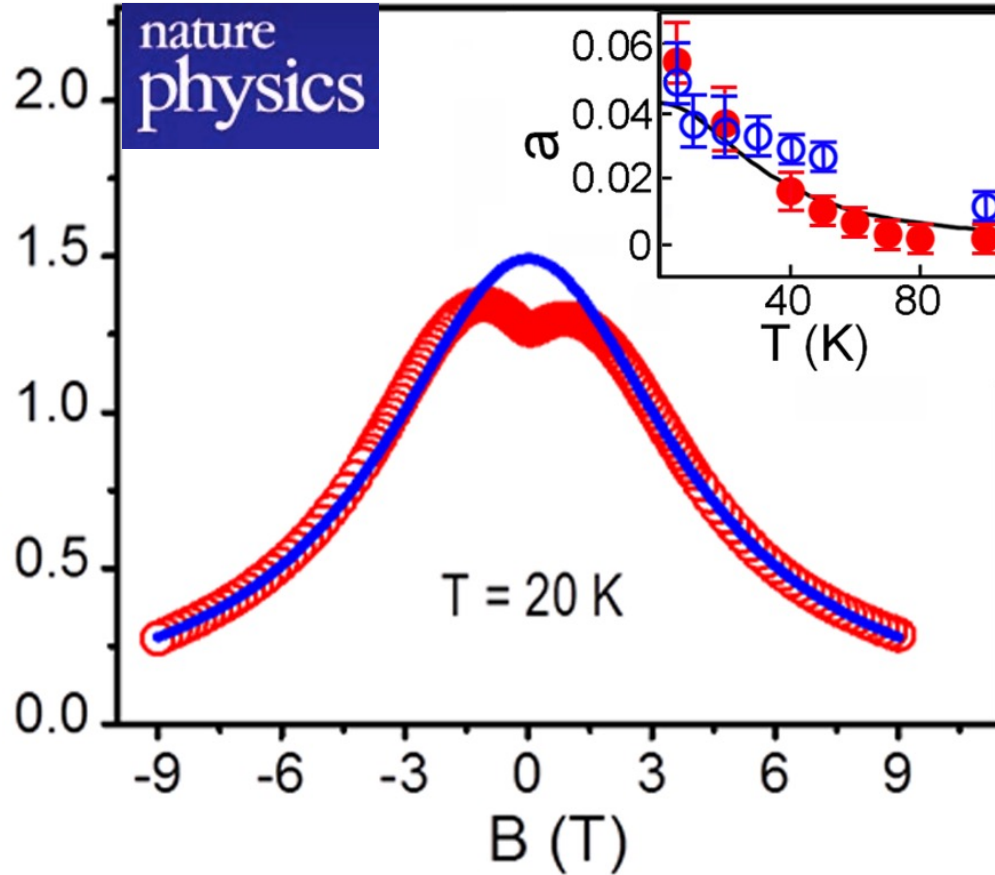
**DIRAC SEMIMETALS**  
Chiral magnetic effect observed

# Chiral Magnetic Effect Generates Quantum Current

Separating left- and right-handed particles in a semi-metallic material produces anomalously high conductivity

February 8, 2016

Nature Physics **12**, 550 (2016)



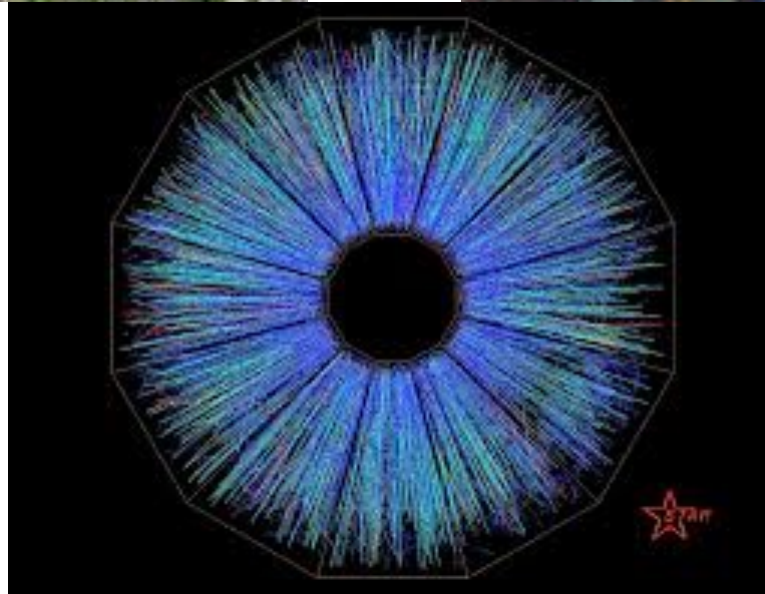
# Can one detect QCD topological transitions in heavy ion collisions?



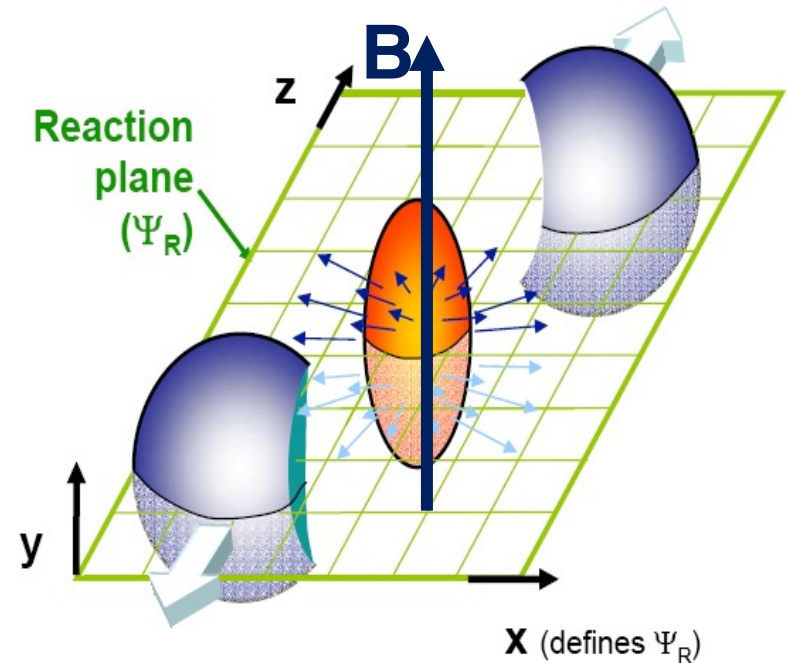
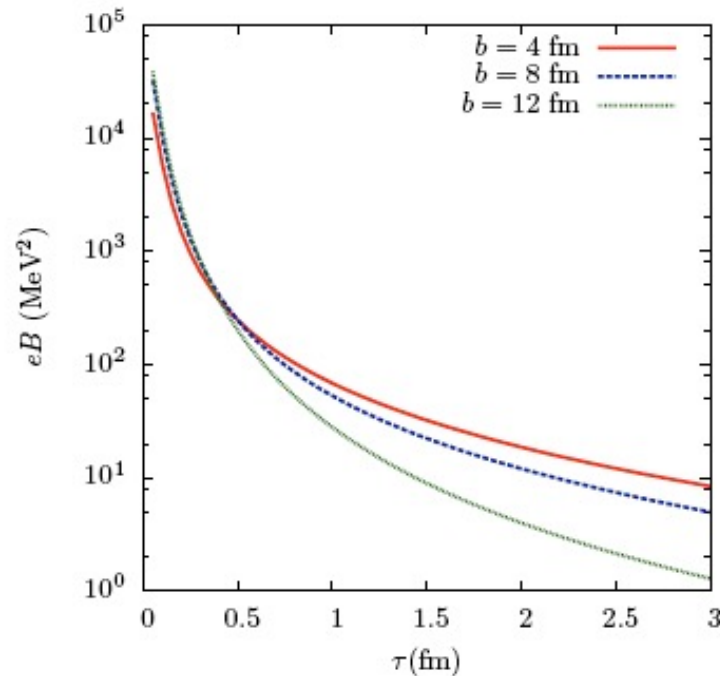
Relativistic Heavy Ion Collider (RHIC) at BNL

The STAR Collaboration at RHIC

Charged hadron tracks in a Au-Au collision at RHIC [STAR experiment]



# Heavy ion collisions as a source of the strongest magnetic fields available in the Laboratory



DK, McLerran, Warringa,  
Nucl Phys A803(2008)227

Fig. A.2. Magnetic field at the center of a gold-gold collision, for different impact parameters. Here the center of mass energy is 200 GeV per nucleon pair ( $Y_0 = 5.4$ ).

At higher energies, the produced magnetic field rapidly decays –  
RHIC has more favorable conditions for CME than LHC

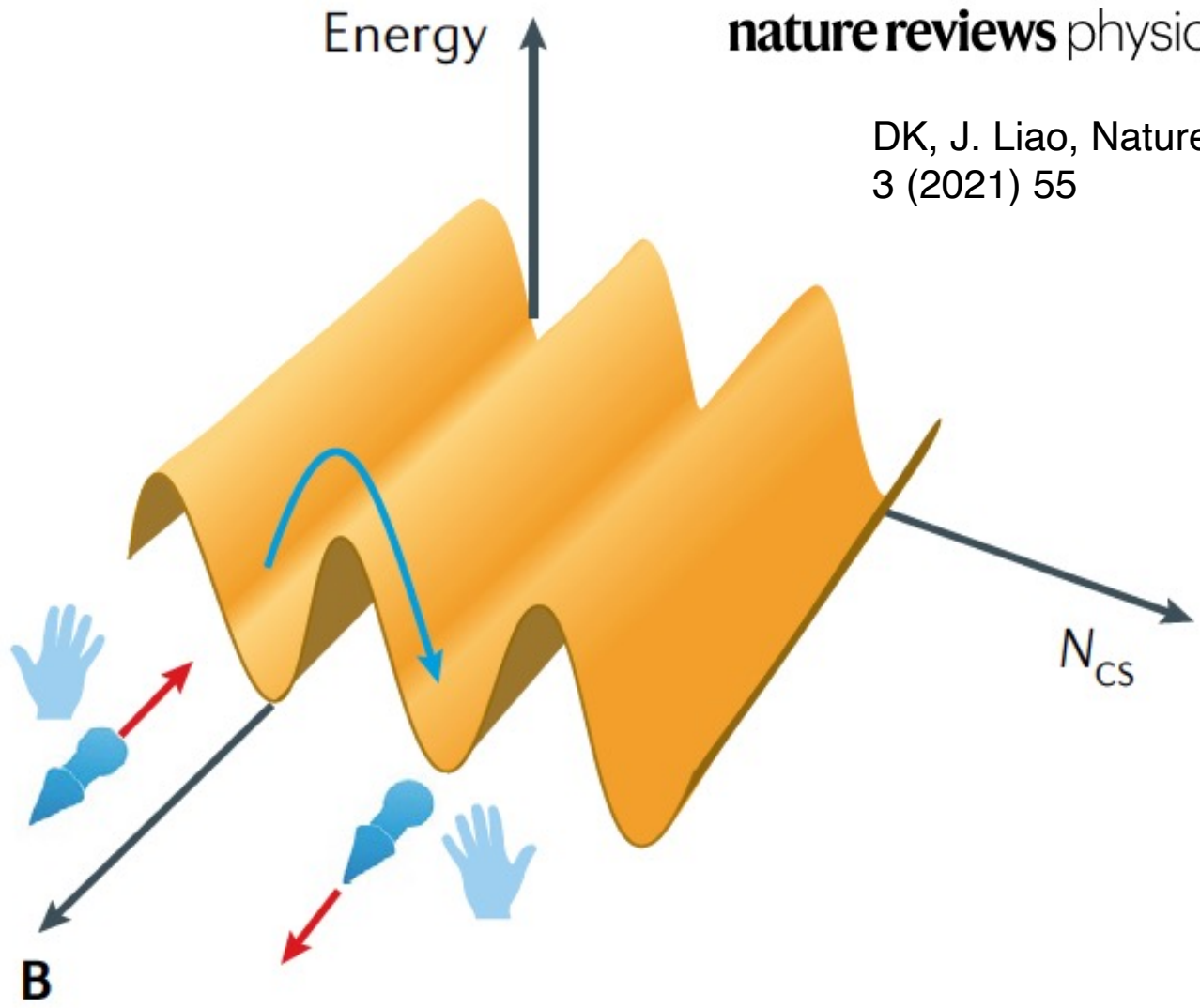
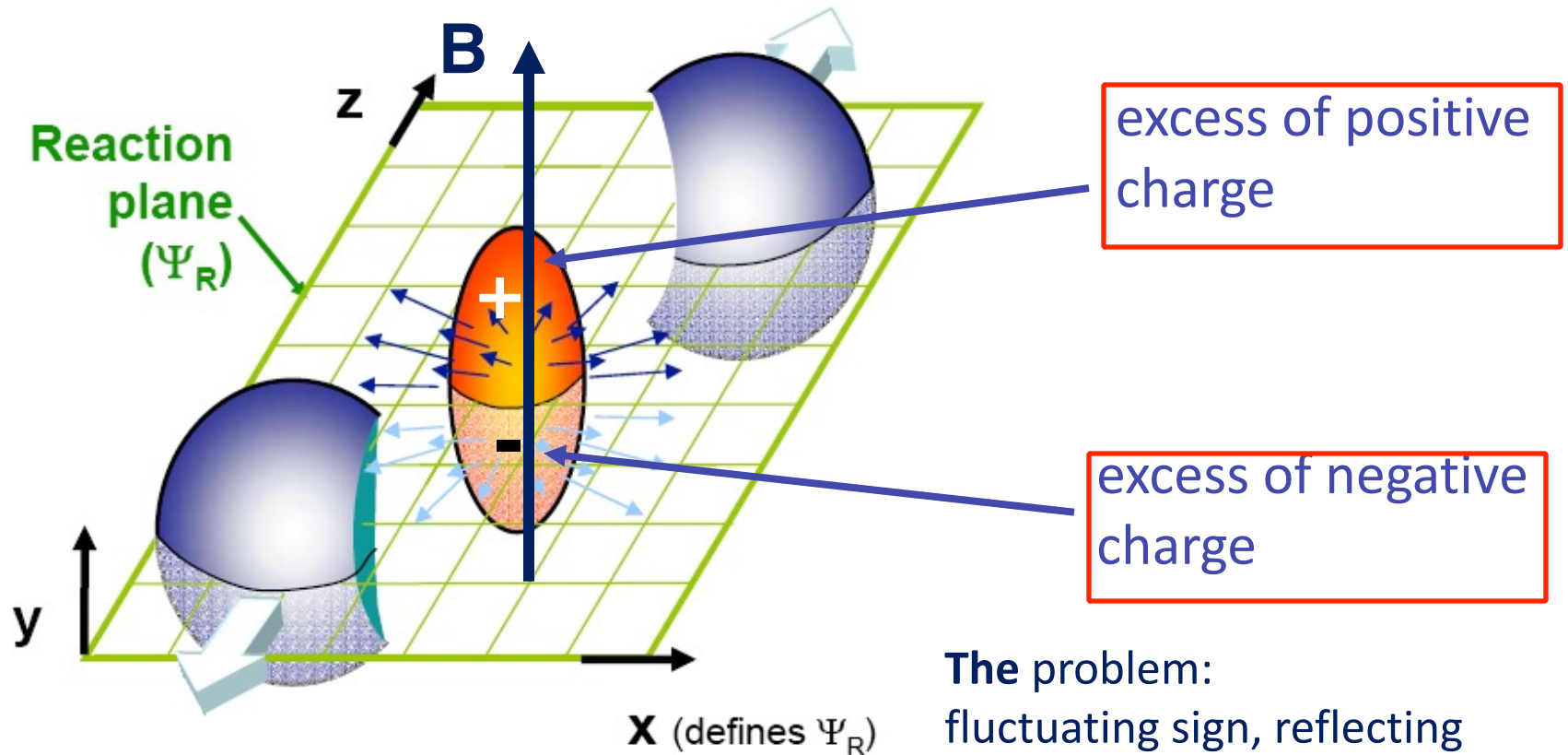


Fig. 1 | **An illustration of the mechanism that underlies the chiral magnetic effect in quantum chromodynamics matter.** The QCD vac-

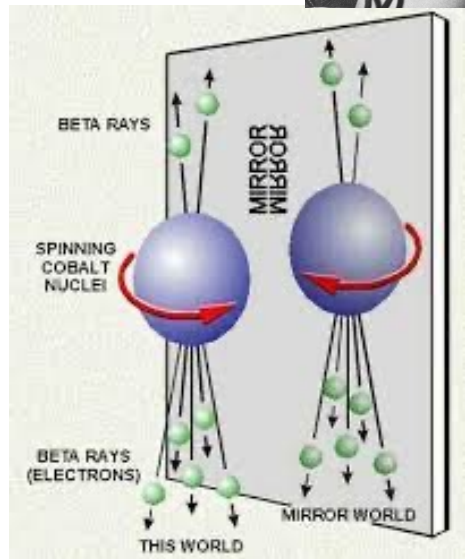
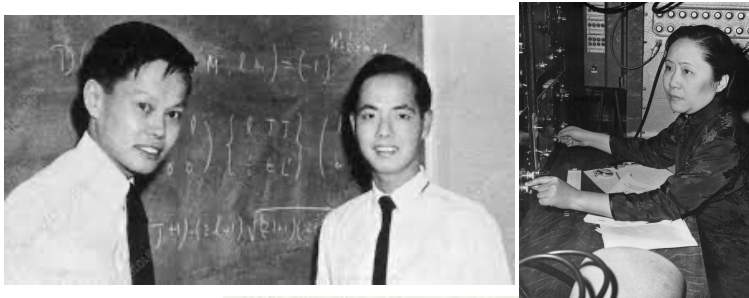
# CME as a probe of topological transitions and chiral symmetry restoration in QCD plasma

## Electric dipole moment due to chiral imbalance

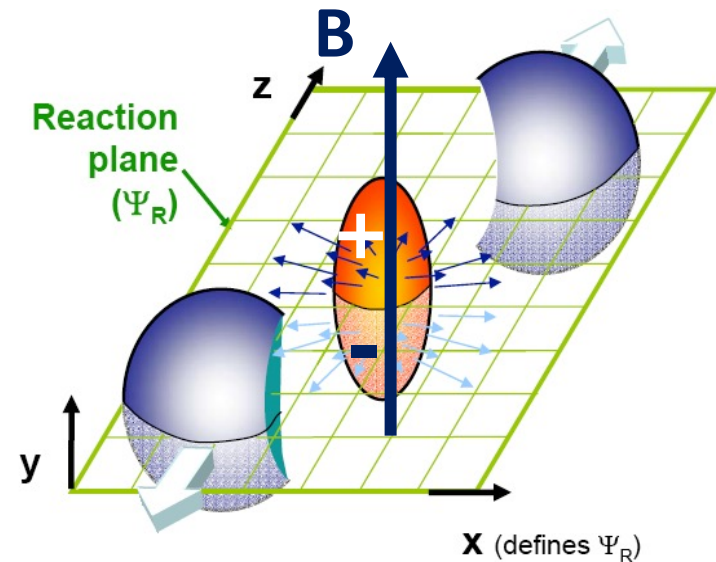




# CME as a probe of topological transitions and Event-by-event parity violation in QCD plasma



Global Parity violation in Weak interactions



Local, Event-by-event Parity violation in Strong Interactions ?

# Separating the signal from background: the beginning

PHYSICAL REVIEW C **70**, 057901 (2004)

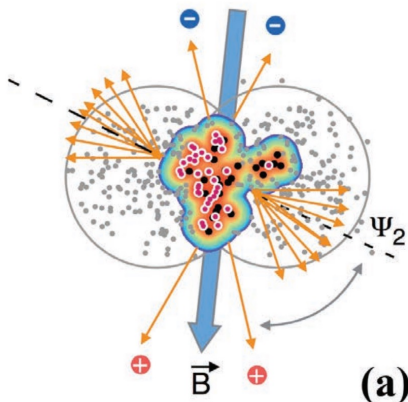
## Parity violation in hot QCD: How to detect it

Sergei A. Voloshin

*Department of Physics and Astronomy, Wayne State University, Detroit, Michigan 48201, USA*

(Received 5 August 2004; published 11 November 2004)

In a recent paper (hep-ph/0406125) Kharzeev argues for the possibility of  $P$ - and/or  $CP$ -violation effects in heavy-ion collisions, the effects that can manifest themselves via asymmetry in  $\pi^\pm$  production with respect to the direction of the system angular momentum. Here we present an experimental observable that can be used to detect and measure the effects.



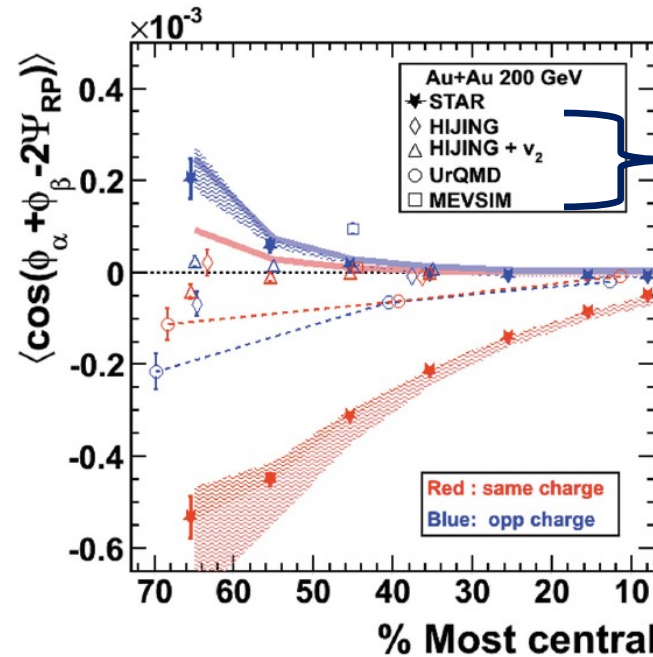
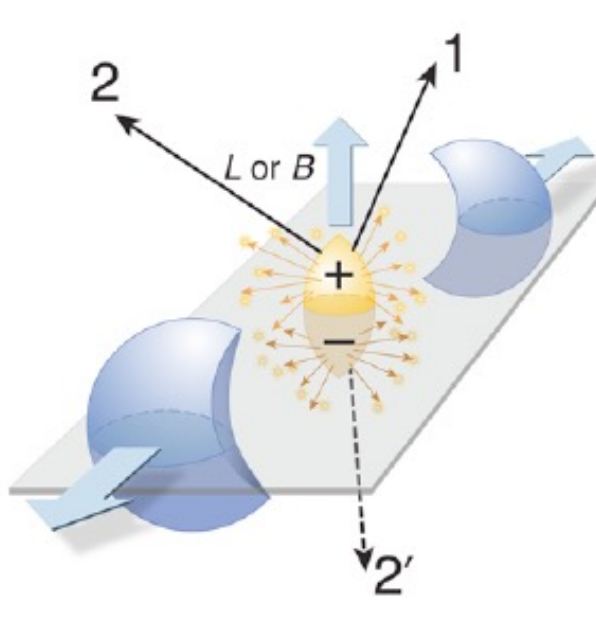
$$\begin{aligned} & \langle \cos(\phi_a - \Psi_2) \cos(\phi_b - \Psi_2) \\ & \quad - \sin(\phi_a - \Psi_2) \sin(\phi_b - \Psi_2) \rangle \quad (1) \\ & = \langle \cos(\phi_a + \phi_b - 2\Psi_2) \rangle = (v_{1,a}v_{1,b} - a_a a_b) \langle \cos(2\Psi_2) \rangle \end{aligned}$$

Measure the difference of charged hadron fluctuations along and perpendicular to magnetic field <sup>26</sup>  
(direction of  $\vec{B}$  is defined by the reaction plane)



## Azimuthal Charged-Particle Correlations and Possible Local Strong Parity Violation

(STAR Collaboration)



Monte Carlo generators  
 do not describe the data

$$\begin{aligned} \gamma &\equiv \langle \cos(\phi_\alpha + \phi_\beta - 2\Psi_{RP}) \rangle = \langle \cos \Delta\phi_\alpha \cos \Delta\phi_\beta \rangle - \langle \sin \Delta\phi_\alpha \sin \Delta\phi_\beta \rangle \\ &= [\langle v_{1,\alpha} v_{1,\beta} \rangle + B_{IN}] - [\langle a_\alpha a_\beta \rangle + B_{OUT}] \approx -\langle a_\alpha a_\beta \rangle + [B_{IN} - B_{OUT}], \end{aligned}$$

NB: P-even quantity (strength of P-odd fluctuations) – subject to large background contributions

# Baseline: scaling with $1/N$ (inverse multiplicity)

## Parity violation in hot QCD: Why it can happen, and how to look for it

Dmitri Kharzeev

*Physics Department, Brookhaven National Laboratory, Upton, NY 11973-5000, USA*

Received 23 December 2004; received in revised form 27 October 2005; accepted 23 November 2005

Available online 7 December 2005

Editor: J.-P. Blaizot

Both signal and background scale as  $1/N$  (N is hadron multiplicity):

Let us consider a  $\mathcal{P}$ -odd domain with a topological charge  $Q \geq 1$ . Then  $N_R - N_L = Q$  in (10); if the total multiplicity of positive pions is  $N_R + N_L = N_{\pi^+}$  we get for the asymmetry an estimate

$$A_{\pi^+} = -A_{\pi^-} \simeq \frac{Q}{N_{\pi^+}}, \quad (11)$$

# Baseline: scaling with 1/N (inverse multiplicity)

PHYSICAL REVIEW C **70**, 057901 (2004)

## Parity violation in hot QCD: How to detect it

Sergei A. Voloshin

*Department of Physics and Astronomy, Wayne State University, Detroit, Michigan 48201, USA*

(Received 5 August 2004; published 11 November 2004)

In a recent paper (hep-ph/0406125) Kharzeev argues for the possibility of  $P$ - and/or  $CP$ -violation effects in heavy-ion collisions, the effects that can manifest themselves via asymmetry in  $\pi^\pm$  production with respect to the direction of the system angular momentum. Here we present an experimental observable that can be used to detect and measure the effects.

The main systematic uncertainty in three particle correlation measurements is due to processes when particles  $a$  and  $b$  are products of a resonance decay, and the resonance itself exhibits elliptic flow [6, 7]. Keeping only this contribution one can write:

$$\begin{aligned} & \langle \cos(\phi_a + \phi_b - 2\phi_c) \rangle \\ &= \langle \cos((\phi_a + \phi_b - 2\phi_{res}) + 2(\phi_{res} - \phi_c)) \rangle \\ &\approx \frac{f_{res} \langle \cos(\phi_a + \phi_b - 2\phi_{res}) \rangle v_{2,res}}{N_\pi} v_{2,c}, \end{aligned} \quad (3)$$

where  $f_{res}$  is the fraction of pion pairs originating from resonance decays (should be relatively small for the same charge combinations),  $\langle \cos(\phi_a + \phi_b - 2\phi_{res}) \rangle$  can be considered as a measure of the azimuthal correlations of

Both signal and background scale as 1/N (N is hadron multiplicity):

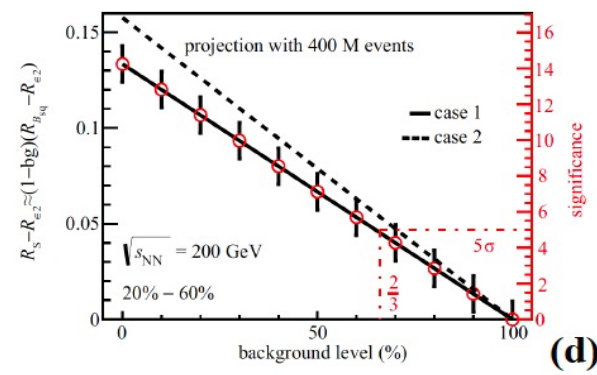
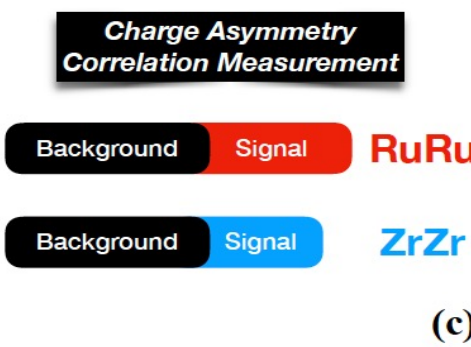
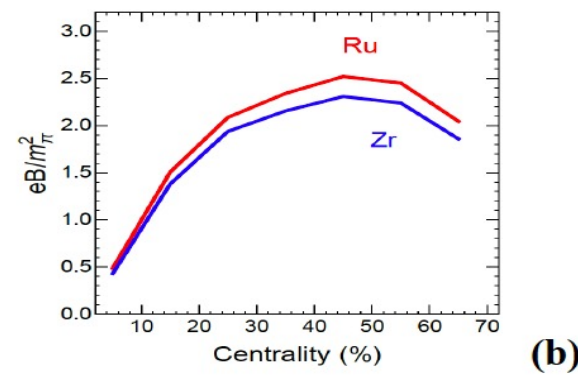
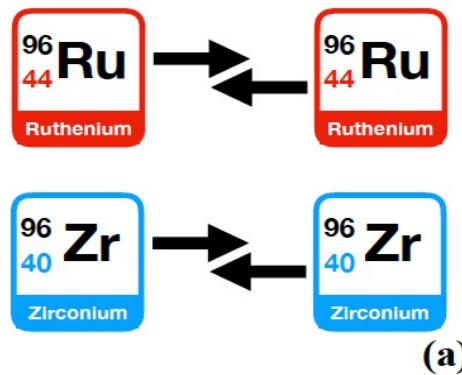
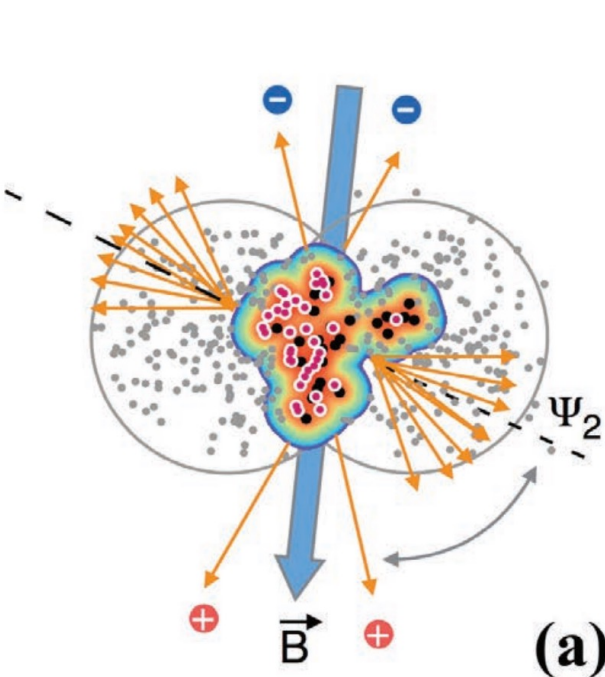
Review:

DK, J.Liao, S.Voloshin, G.Wang, Prog. Part. Nucl. Phys. 88 (2016) 1

Separating the signal from background is the main subject of the ongoing work –

# Big new development: the isobar run!

Isobars: same shape = same background(?),  
 different Z = different magnetic field – change in signal



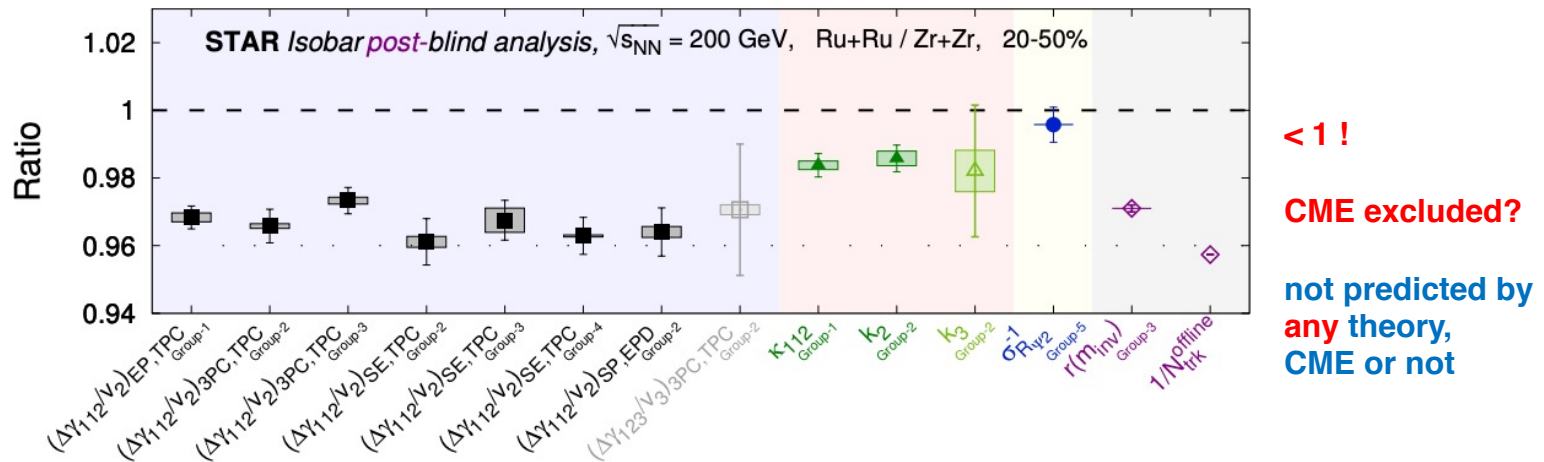
STAR Collaboration

# Detection of QCD topological transitions using the isobar collisions at RHIC

The results have just been released! (Aug 31, 2021)

Search for the Chiral Magnetic Effect with Isobar Collisions at  $\sqrt{s_{NN}} = 200$  GeV by the STAR Collaboration at RHIC

between the two isobar systems. Observed differences in the multiplicity and flow harmonics at the matching centrality indicate that the magnitude of the CME background is different between the two species. No CME signature that satisfies the predefined criteria has been observed in isobar collisions in this blind analysis.



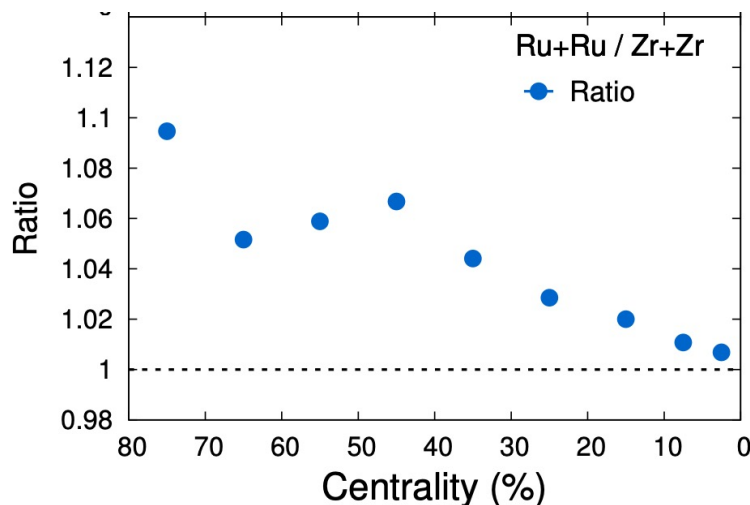
# Detection of QCD topological transitions using the isobar collisions at RHIC

Search for the Chiral Magnetic Effect with Isobar Collisions at  $\sqrt{s_{NN}} = 200$  GeV by the STAR Collaboration at RHIC

between the two isobar systems. Observed differences in the multiplicity and flow harmonics at the matching centrality indicate that the magnitude of the CME background is different between the two species. No CME signature that satisfies the predefined criteria has been observed in isobar collisions in this blind analysis.

The predefined criteria assume that the multiplicities in RuRu and ZrZr collisions (in the same cross section cuts) are the same. Is this criterion supported by the data?

**No.** The **measured** multiplicities are **significantly** different:

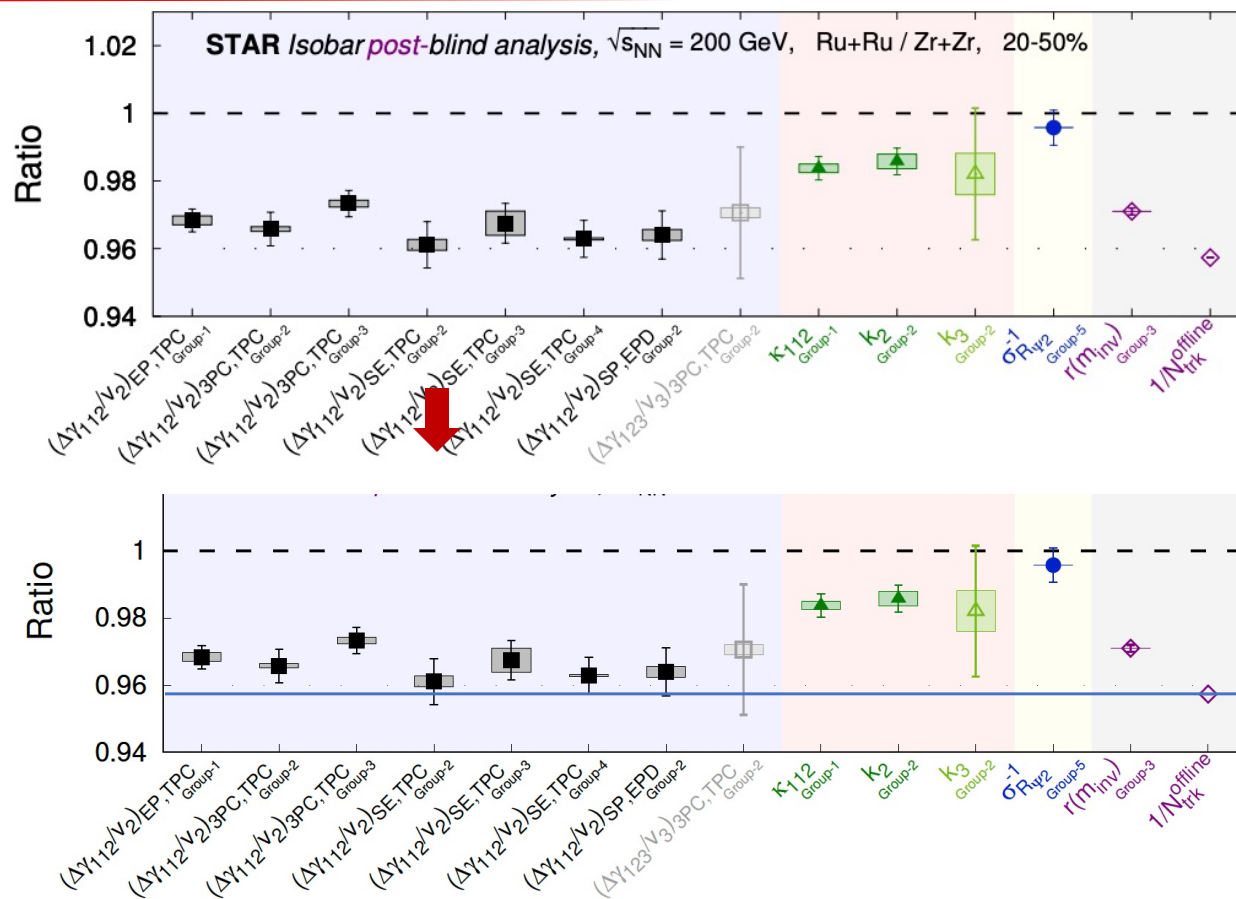


Since both signal and background scale as  $1/N$ , the baseline has to be changed. This is not part of the “predefined criteria”.



# Direct detection of QCD topological transitions using the isobar collisions at RHIC

of clusters scaling with multiplicity, the value of  $\Delta\gamma$  scales with the inverse of multiplicity [20], i.e.  $N\Delta\gamma \propto v_2$  with the proportionality presumably equal between the two isobars. Because of this, it may be considered that the proper baseline for the ratio of  $\Delta\gamma/v_2$  between the two isobars is the ratio of the inverse multiplicities of the two systems. Analysis with respect to this baseline is not documented in the pre-blinding procedures of this blind analysis, so is not reported as part of the blind analysis. We include this inverse multiplicity ratio as the right-most point in Fig. 27.



Depending on the observable, CME is present at 1-4  $\sigma$  level

Detailed analysis is needed, and is ongoing

Stay tuned!

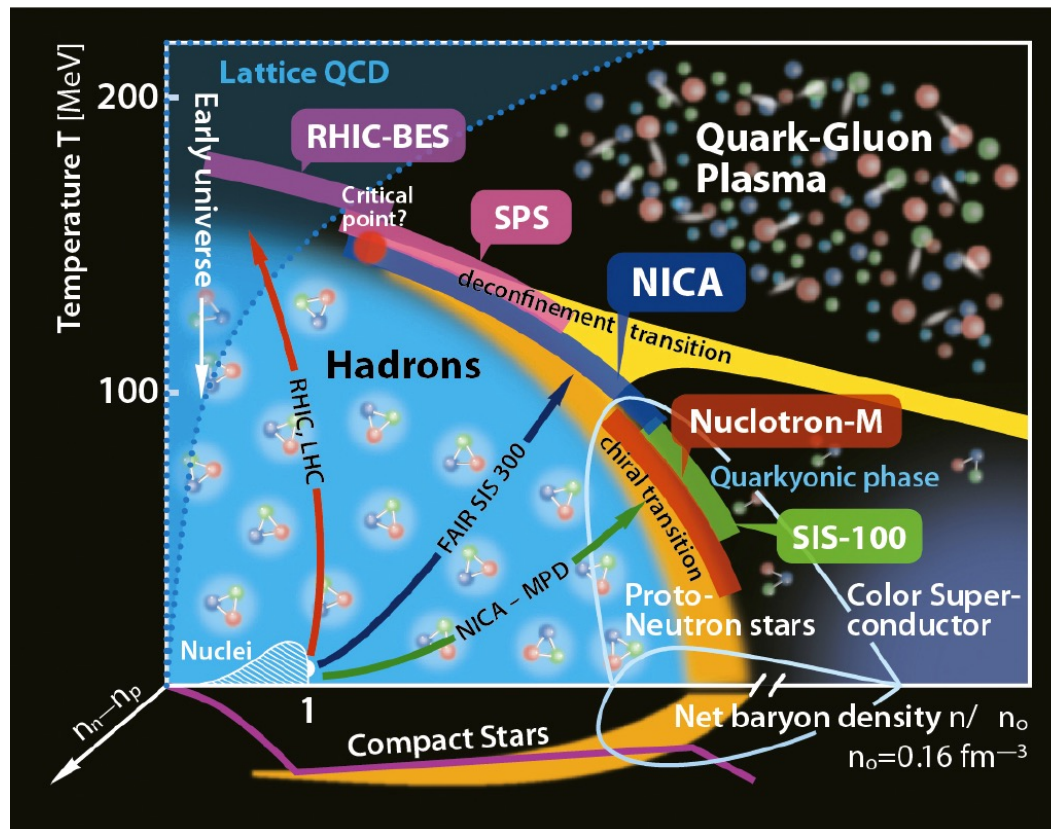
# Conference on “Chirality, vorticity and magnetic field in heavy ion collisions”

Stony Brook University,  
November 1-5, 2021

# Chern-Simons fluctuations near a critical point

K. Ikeda, DK, Y. Kikuchi,  
arXiv: 2012.02926

Motivation: what happens to topological fluctuations near the critical point? Could there be an enhancement due to criticality?



# Chern-Simons fluctuations near a critical point

Simple system that exhibits a critical point:  
massive Schwinger model near  $\theta = \pi$

S. Coleman, Annals Phys. 101(1976) 239

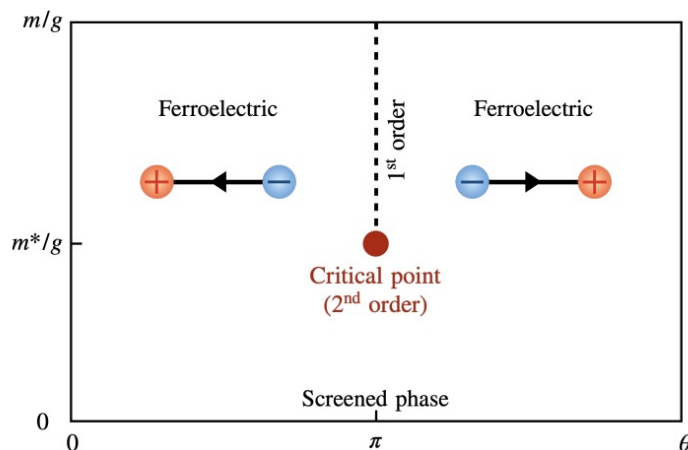


FIG. 1: Phase diagram of the massive Schwinger model in the  $(\theta, m/g)$  plane. At  $\theta = \pi$  and large masses  $m > m^*$ , the ferroelectric phases with opposite orientations of electric field are separated by the line of the first order phase transition. This line terminates at  $m^* \approx 0.33g$  at the critical point, where the phase transition is second order. For small masses  $m \ll m^*$ , the electric field is screened by the production of light fermion-antifermion pairs.

K. Ikeda, DK, Y. Kikuchi,  
arXiv: 2012.02926

$$S = \int d^2x \left[ -\frac{1}{4} F^{\mu\nu} F_{\mu\nu} + \bar{\psi} (i\gamma^\mu D_\mu - m e^{i\gamma_5 \theta}) \psi \right]$$

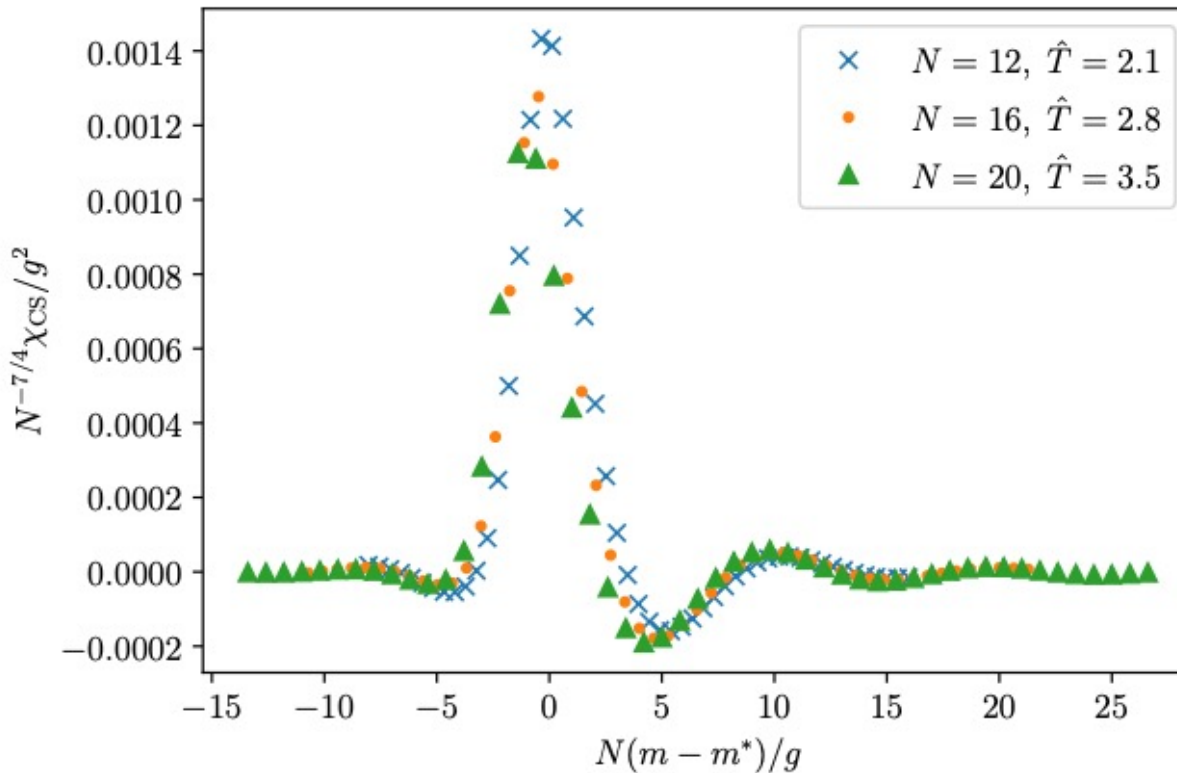


bosonization

$$H = \int dx \left[ \frac{1}{2} \dot{\varphi}^2 + \frac{1}{2} (\partial_1 \varphi)^2 + \frac{\mu^2}{2} \left( \varphi + \frac{\theta}{2\sqrt{\pi}} \right)^2 - c m \mu \cos(2\sqrt{\pi} \varphi) \right]. \quad \mu = \frac{g}{\sqrt{\pi}}$$

$$U(\varphi) = \frac{\mu^2}{2} \left( \varphi + \frac{\theta}{2\sqrt{\pi}} \right)^2 - c m \mu \cos(2\sqrt{\pi} \varphi)$$

# Chern-Simons fluctuations near a critical point: a digital quantum simulation



K. Ikeda, DK, Y. Kikuchi,  
arXiv: 2012.02926

Sharp peak in  
topological fluctuations  
near the critical point!

Search for CME in  
low-energy  
heavy ion collisions?

# Real-time dynamics of CME

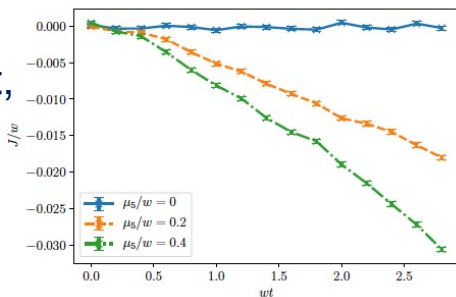
Study of real-time CME dynamics in (1+1) QED using a digital quantum simulation (IBM-Q)

$$S = \int d^2x \left[ -\frac{1}{4} F^{\mu\nu} F_{\mu\nu} + \frac{g\theta}{4\pi} \epsilon^{\mu\nu} F_{\mu\nu} + \bar{\psi}(i\gamma^\mu D_\mu - m)\psi \right]$$

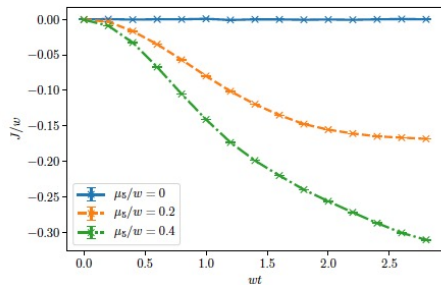
DK, Y. Kikuchi,  
arXiv:2001.00698,  
Phys.Rev.Res. 2 (2020)

Jordan-Wigner transformation – spin chain

CME current,  
 $\mu_5$  quench:

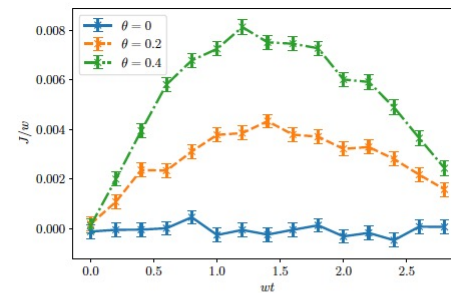


(a)  $M/w = 0.1$

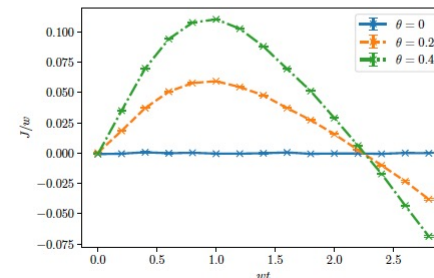


(b)  $M/w = 0.5$

CME current,  
 $\theta$  quench:



(a)  $M/w = 0.1$

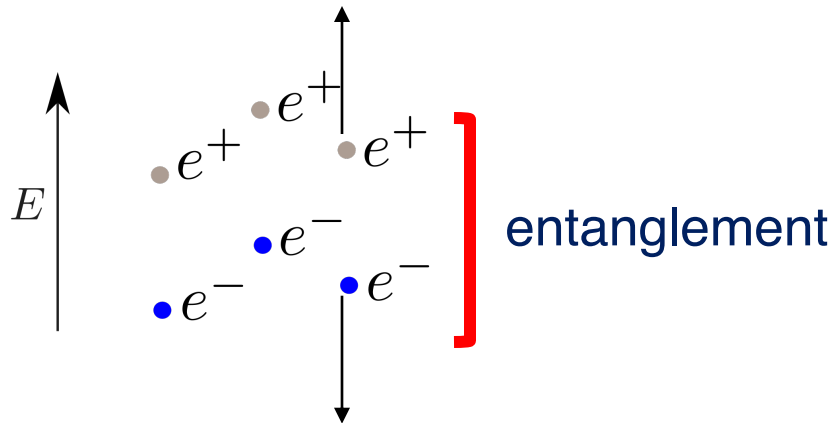


(b)  $M/w = 0.5$

# Real-time dynamics of CME and “chiral entanglement”

A. Florio, DK,  
PRD ‘21

Study of real-time evolution of entanglement between the left- and right-movers in Schwinger pair production by electric pulses



$$S_G = \int dk_1 [ (1 - |\beta_{k_1, t^*}|^2) \log (1 - |\beta_{k_1, t^*}|^2) + |\beta_{k_1, t^*}|^2 \log (|\beta_{k_1, t^*}|^2) ] ,$$

Gibbs entropy



Entanglement entropy

$$|\alpha_{k_1, t^*}|^2 = 1 - |\beta_{k_1, t^*}|^2$$

$$S_E = - \int dk_1 [ |\alpha_{k_1, t^*}|^2 \log (|\alpha_{k_1, t^*}|^2) + |\beta_{k_1, t^*}|^2 \log (|\beta_{k_1, t^*}|^2) ]$$

# Real-time dynamics of CME and “chiral entanglement”

A. Florio, DK,  
to appear on June 3

Entanglement entropy can be reconstructed from  
the moments of multiplicity distribution:

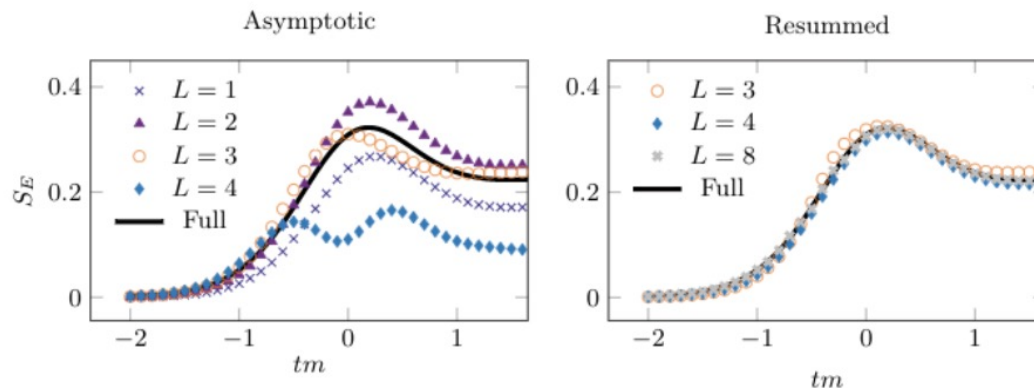
$$S_E = \sum_{l=1}^{\infty} \frac{C_{2l}}{(2l)!} (2\pi)^{2l} |B_{2l}|$$

Bernoulli numbers

Derived first for shot noise in Quantum Point Contacts:

I. Klich, L. Levitov, PRL (2009)

An efficient way to resum this series is found, using Pade-Borel methods:

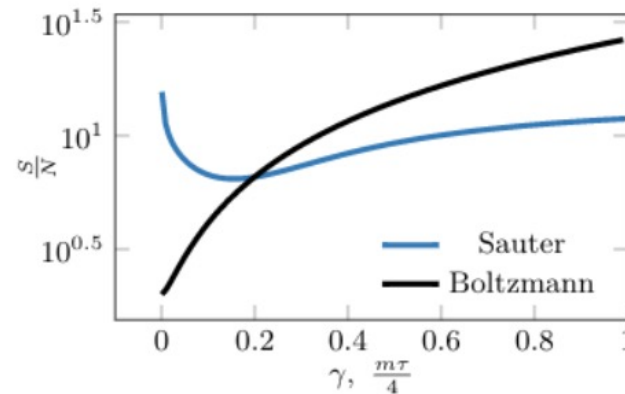
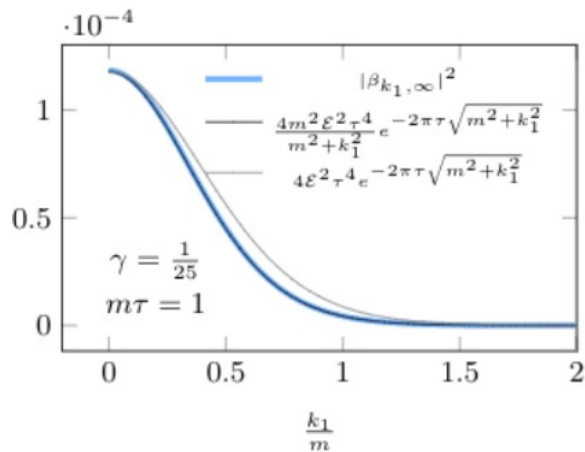




# Real-time dynamics of CME and “chiral entanglement”

A. Florio, DK,  
PRD '21

Short pulses lead to an approximately thermal entropy and momentum spectrum:



Semiclassical derivation:  
DK, K. Tuchin, NPA (2005)

Could entanglement be at the origin of “fast equilibration” in high-energy hadron and heavy ion collisions?

# Summary

1. Chiral Magnetic Effect and related quantum transport phenomena are direct probes of topology of gauge fields
2. CME in heavy ion collisions is a unique opportunity to observe in the lab topological fluctuations in QCD
3. Isobar run has been extremely successful – unprecedented amount of precise data has become available. Careful analysis of this data (including the baseline differences between the isobars) is imperative, and requires a concerted effort of experimentalists and theorists].

[Early estimates suggest the presence of CME at 1-4  $\sigma$  level]