

$$\chi_{4C,\gamma\pi^+\pi^-\eta'}^2 < \chi_{4C,\gamma\gamma\pi^+\pi^-\eta'}^2$$

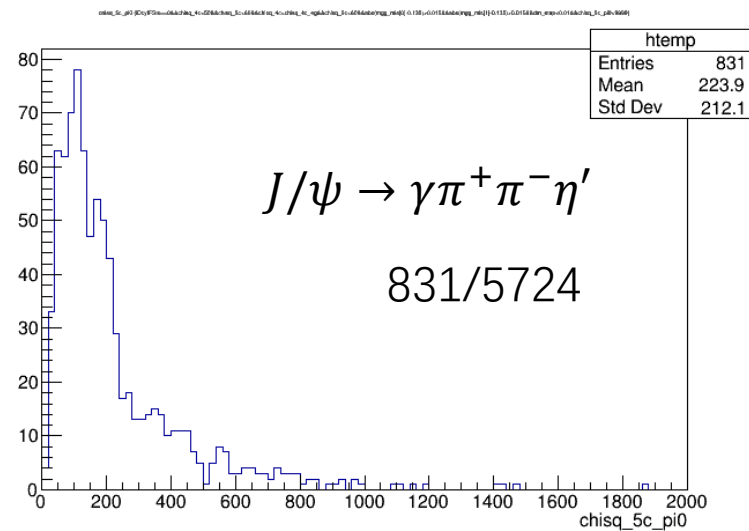
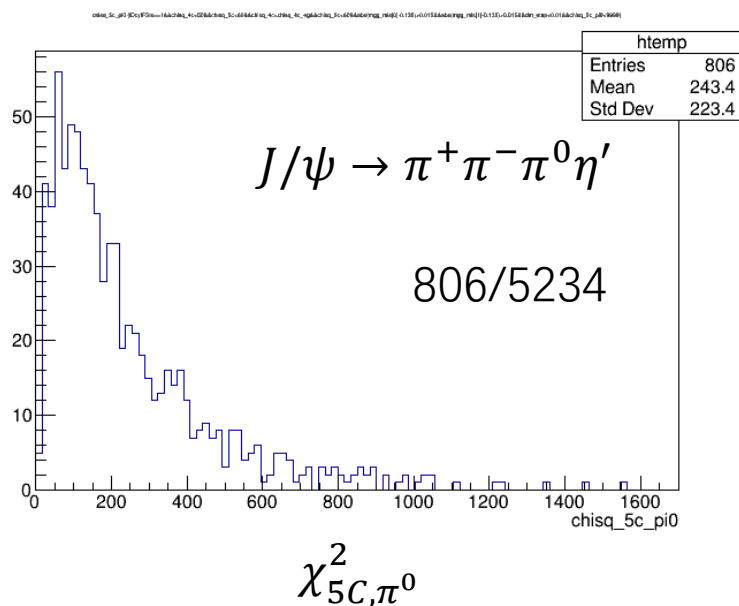
$$\chi_{5C}^2 < 60$$

$$\chi_{\gamma\pi^+\pi^-\eta'}^2 < 50$$

$$|m_{\gamma\gamma} - 0.135| > 0.015$$

$$|m_{\pi^+\pi^-\eta} - m_{\eta'}| < 0.01$$

- 从三光子的4C中挑2光子做 π^0 的5C, $\chi_{5C\eta'}^2 < \chi_{5C\pi^0}^2$, inclusive MC中 $J/\psi \rightarrow \pi^+\pi^-\pi^0\eta'$ 事例数5234 \rightarrow 5223
- 从四光子的4C中挑2光子做 π^0 的5C



$J/\psi \rightarrow \gamma\pi^+\pi^-\eta'$

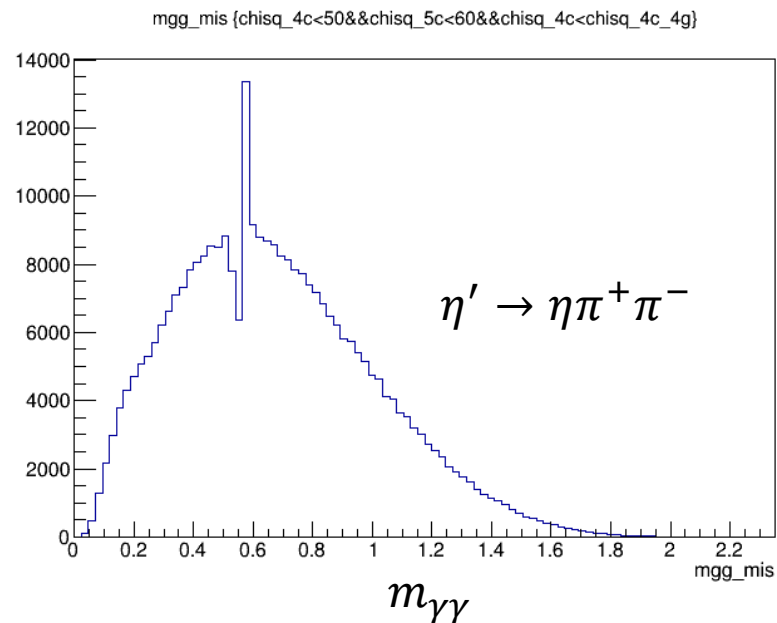
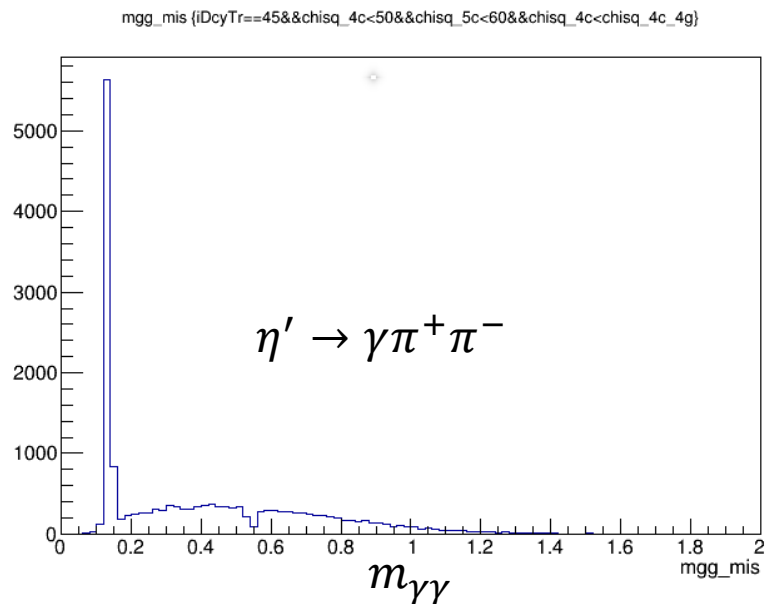
$$J/\psi \rightarrow \pi^+\pi^-\pi^0\eta'$$

误组合 γ

$$\chi_{4C,\gamma\pi^+\pi^-\eta'}^2 < \chi_{4C,\gamma\gamma\pi^+\pi^-\eta'}^2$$

$$\chi_{5C}^2 < 60$$

$$\chi_{\gamma\pi^+\pi^-\eta'}^2 < 50$$



$$J/\psi \rightarrow \pi^0\pi^0\pi^+\pi^-\pi^+\pi^-$$

mgg_mis {dm_etap<0.01&&chisq_4c<chisq_4c_4g&&chisq_5c<60&&chisq_4c<50}

