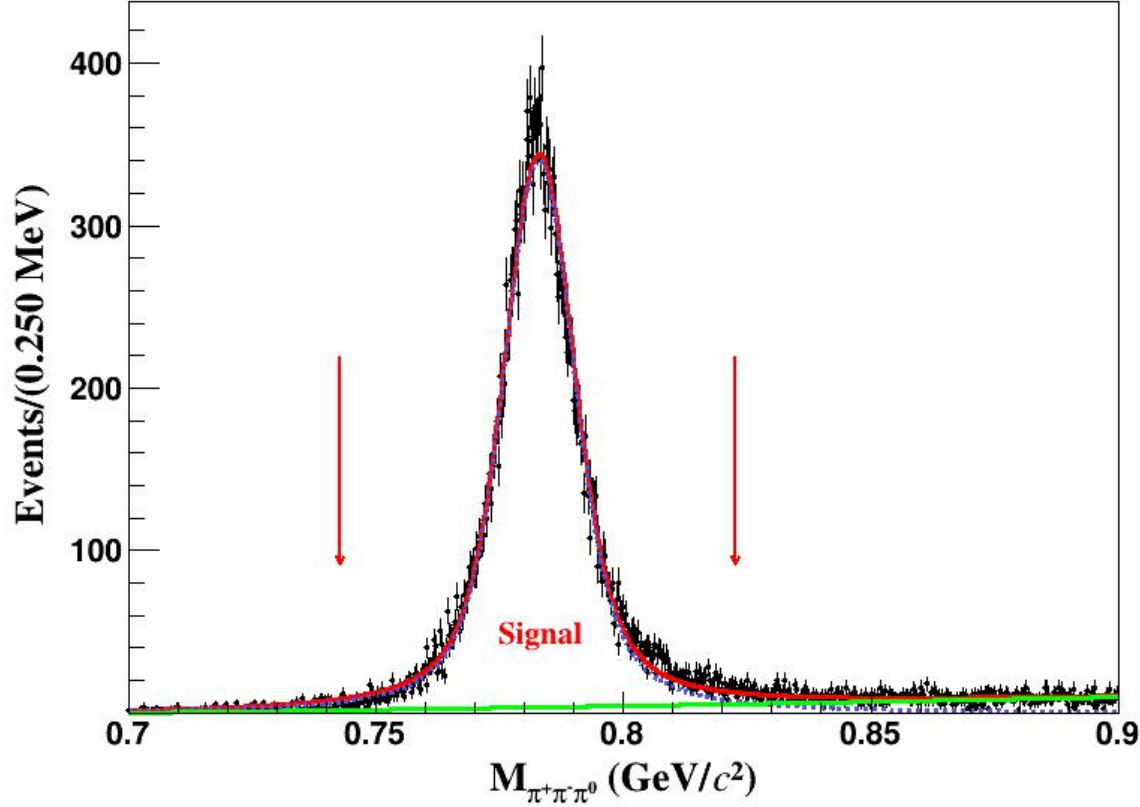


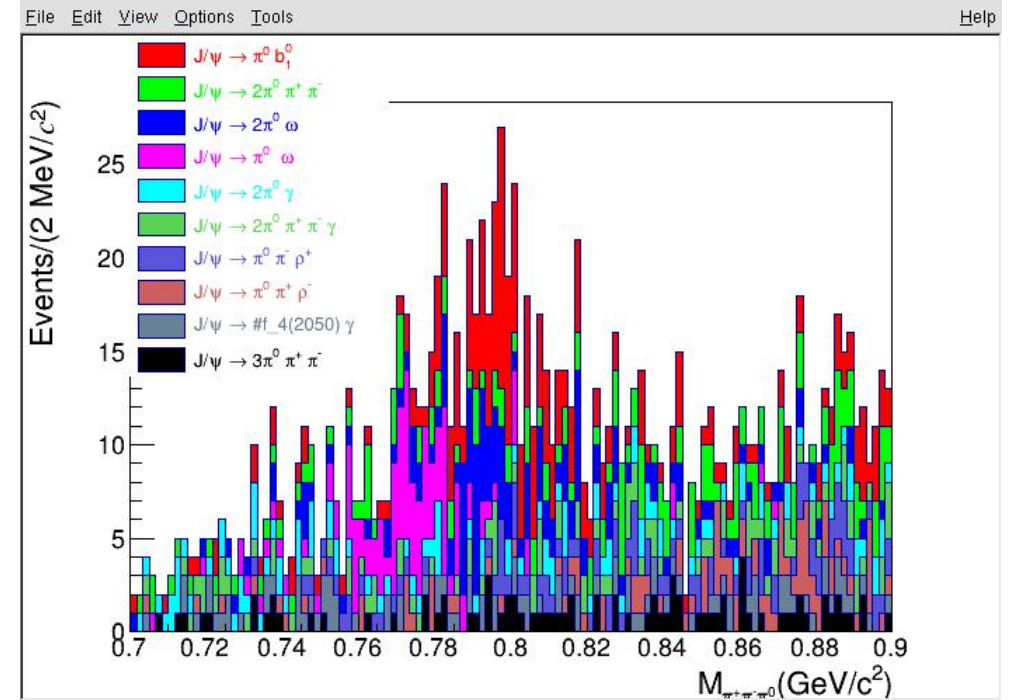
Eff:26.712%



1144/30107=3.8%

Table 1: Decay trees and their respective final states.

rowNo	decay tree	decay final state	iDcyTr	nEtr	nCEtr
1	$J/\psi \rightarrow \pi^0 \omega, \omega \rightarrow \pi^0 \pi^+ \pi^-$	$\pi^0 \pi^0 \pi^+ \pi^-$	0	24518	24518
2	$J/\psi \rightarrow \pi^0 b_1^0, b_1^0 \rightarrow \pi^0 \omega, \omega \rightarrow \pi^0 \pi^+ \pi^-$	$\pi^0 \pi^0 \pi^0 \pi^+ \pi^-$	5	243	24761
3	$J/\psi \rightarrow \pi^0 \pi^0 \pi^+ \pi^-$	$\pi^0 \pi^0 \pi^+ \pi^-$	3	167	24928
4	$J/\psi \rightarrow \pi^0 \pi^0 \omega, \omega \rightarrow \pi^0 \pi^+ \pi^-$	$\pi^0 \pi^0 \pi^0 \pi^+ \pi^-$	6	145	25073
5	$J/\psi \rightarrow \pi^0 \omega, \omega \rightarrow \pi^0 \pi^+ \pi^- \gamma^f$	$\pi^0 \pi^0 \pi^+ \pi^- \gamma^f$	12	117	25190
6	$J/\psi \rightarrow \pi^0 \pi^0 \gamma$	$\pi^0 \pi^0 \gamma$	9	115	25305
7	$J/\psi \rightarrow \pi^0 \pi^0 \pi^+ \pi^- \gamma^F$	$\pi^0 \pi^0 \pi^+ \pi^- \gamma^F$	18	100	25405
8	$J/\psi \rightarrow \pi^0 \pi^- \rho^+, \rho^+ \rightarrow \pi^0 \pi^+$	$\pi^0 \pi^0 \pi^+ \pi^-$	14	97	25502
9	$J/\psi \rightarrow \pi^0 \pi^+ \rho^-, \rho^- \rightarrow \pi^0 \pi^-$	$\pi^0 \pi^0 \pi^+ \pi^-$	22	97	25599
10	$J/\psi \rightarrow f_4(2050) \gamma, f_4(2050) \rightarrow \pi^0 \pi^0$	$\pi^0 \pi^0 \gamma$	15	96	25695
11	$J/\psi \rightarrow \pi^0 \pi^0 \pi^0 \pi^+ \pi^-$	$\pi^0 \pi^0 \pi^0 \pi^+ \pi^-$	2	82	25777
12	$J/\psi \rightarrow \pi^0 \pi^0 \rho^0, \rho^0 \rightarrow \pi^+ \pi^-$	$\pi^0 \pi^0 \pi^+ \pi^-$	23	52	25829
13	$J/\psi \rightarrow f_2(1270) \gamma, f_2(1270) \rightarrow \pi^0 \pi^0$	$\pi^0 \pi^0 \gamma$	8	45	25874
14	$J/\psi \rightarrow f_0(1710) \gamma, f_0(1710) \rightarrow \pi^0 \pi^0$	$\pi^0 \pi^0 \gamma$	32	35	25909
15	$J/\psi \rightarrow \omega f_2(1270), \omega \rightarrow \pi^0 \pi^+ \pi^-, f_2(1270) \rightarrow \pi^0 \pi^0$	$\pi^0 \pi^0 \pi^0 \pi^+ \pi^-$	7	21	25930



		BESIII	708 20*20	
Fit I	$\alpha(\times 10^3)$	$132.1\pm 6.7$	$130.5\pm 2.9$	$131.1\pm 2.9$
Fit II	$\alpha(\times 10^3)$	$120.2\pm 7.1$	$118.5\pm 3.4$	$118.4\pm 3.4$
	$\beta(\times 10^3)$	$29.5\pm 8.0$	$26.5\pm 4.3$	$28.2\pm 4.3$
Fit III	$\alpha(\times 10^3)$	$110.7\pm 17.5$	$116.1\pm 9.0$	$108.3\pm 9.0$
	$\beta(\times 10^3)$	$24.9\pm 10.1$	$25.8\pm 5.0$	$25.0\pm 5.0$
	$\gamma(\times 10^3)$	$21.6\pm 29.3$	$5.1\pm 17.3$	$20.9\pm 17.3$
Fit IV	$\alpha(\times 10^3)$	$125.9\pm 21.4$	$139.8\pm 11.1$	$134.3\pm 11.1$
	$\beta(\times 10^3)$	$-3.9\pm 27.3$	$-1.9\pm 13.9$	$-24.5\pm 13.9$
	$\gamma(\times 10^3)$	$-12.6\pm 39.1$	$-5.7\pm 24.7$	$-47.9\pm 24.7$
	$\delta(\times 10^3)$	$67.5\pm 50.0$	$126.7\pm 36.2$	$138.9\pm 36.2$

## 效率卡边界

NO.	NAME	VALUE	ERROR
1	d_value	1.00000e+00	fixed
2	#alpha	1.31149e-01	2.92227e-03

NO.	NAME	VALUE	ERROR
1	d_value	1.00000e+00	fixed
2	#alpha	1.18415e-01	3.48690e-03
3	#beta	2.82133e-02	4.30662e-03

NO.	NAME	VALUE	ERROR
1	d_value	1.00000e+00	fixed
2	#alpha	1.08368e-01	9.00132e-03
3	#beta	2.50822e-02	5.02983e-03
4	#gamma	2.09556e-02	1.73619e-02

NO.	NAME	VALUE	ERROR
1	d_value	1.00000e+00	fixed
2	#alpha	1.34344e-01	1.11598e-02
3	#beta	-2.45736e-02	1.39605e-02
4	#gamma	-4.79429e-02	2.47001e-02
5	#delta	1.38960e-01	3.62881e-02

# FIT III

