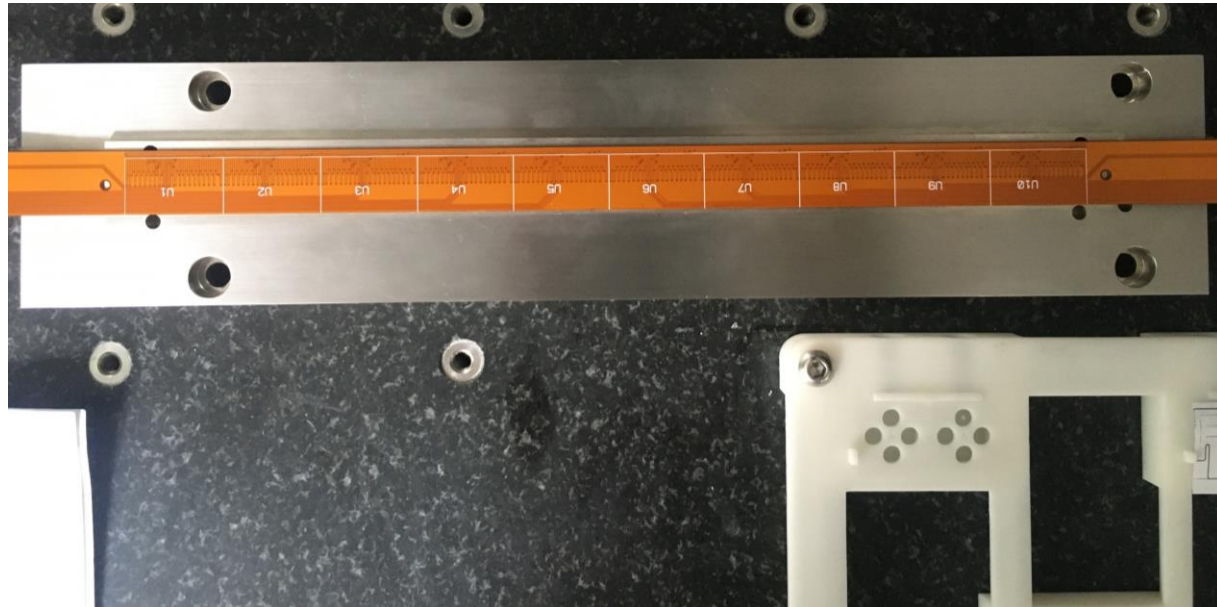
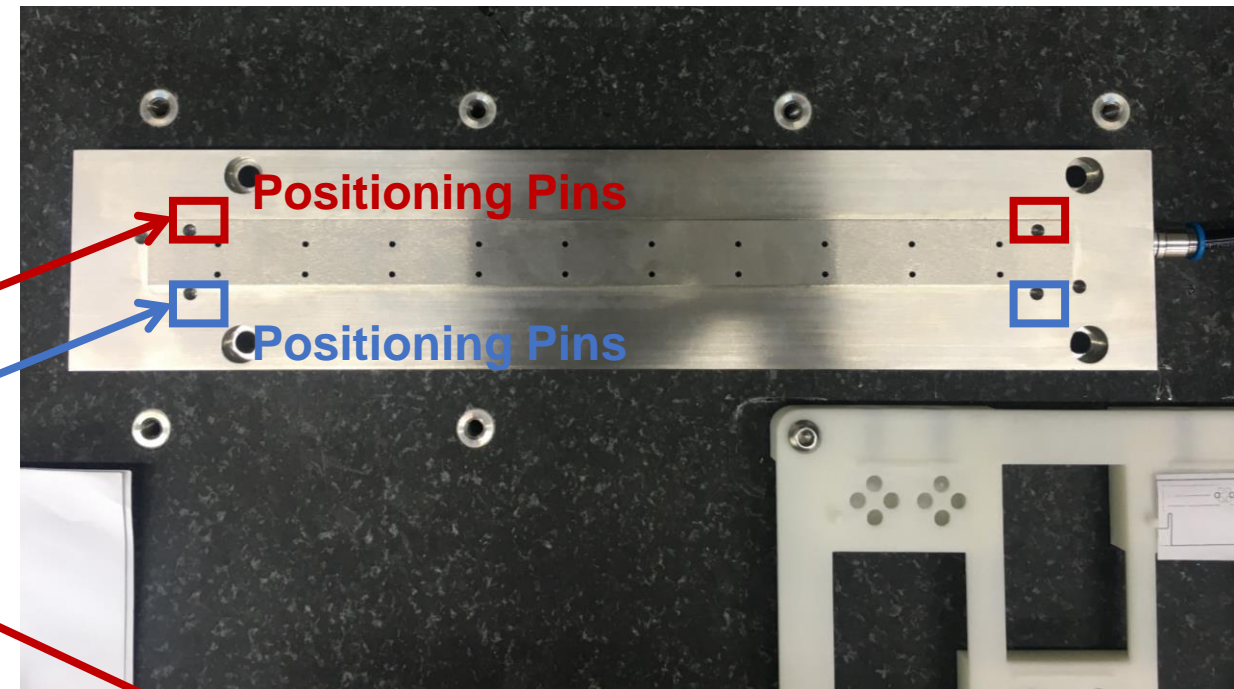


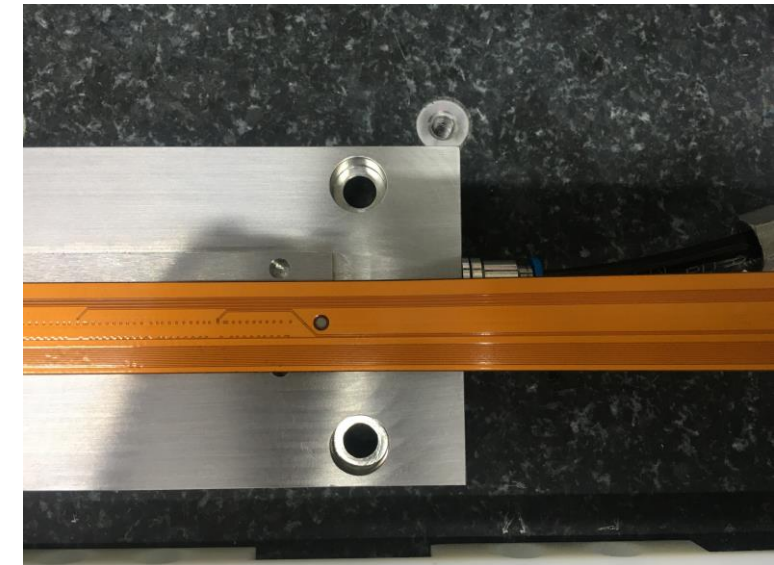
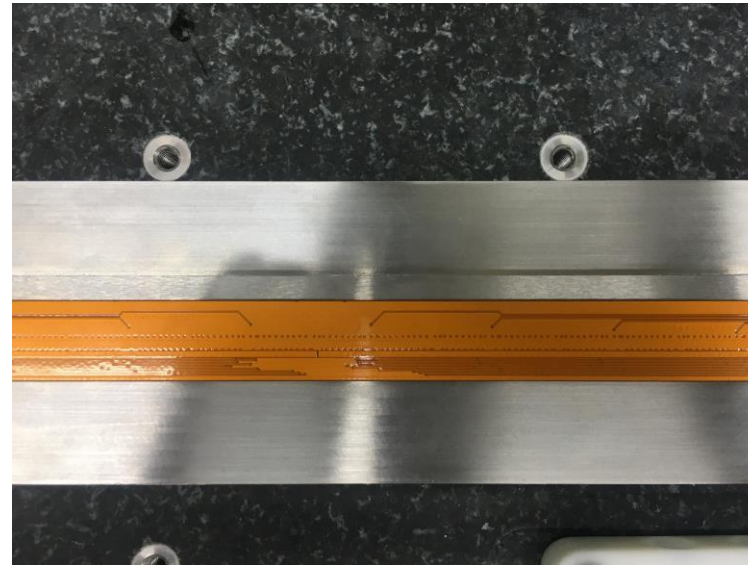
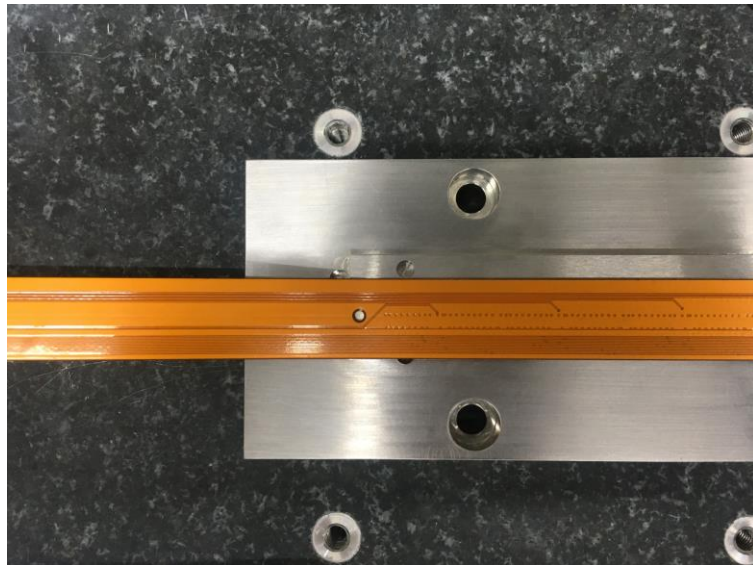
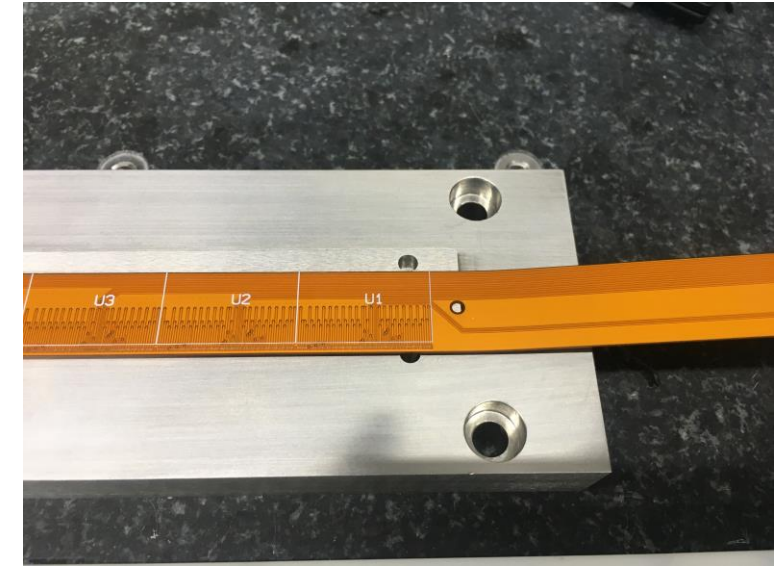
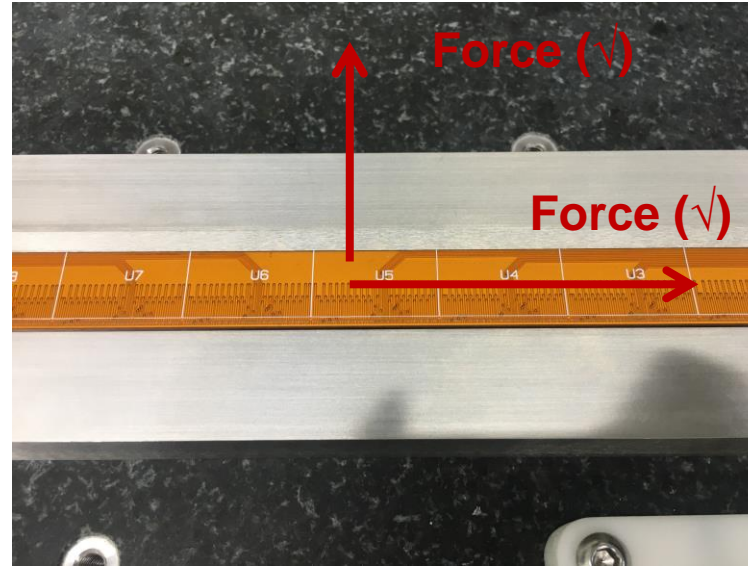
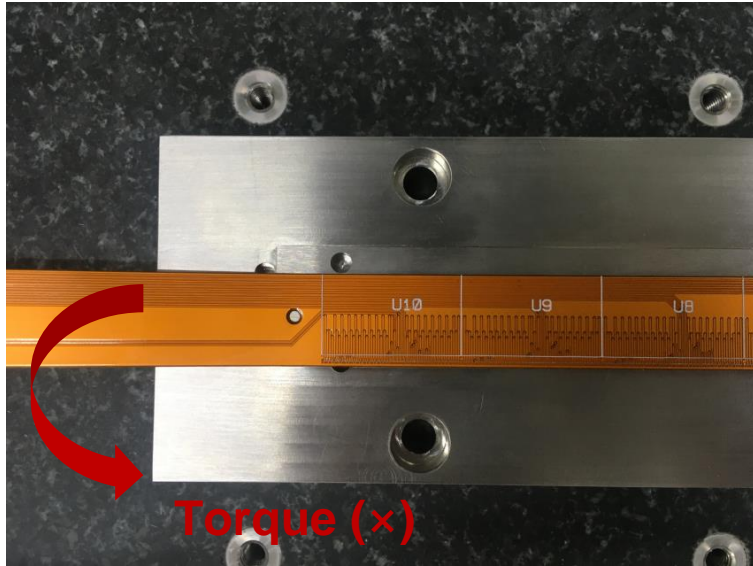
CEPC MOST2 Prototype Assembly

Xinhui Huang

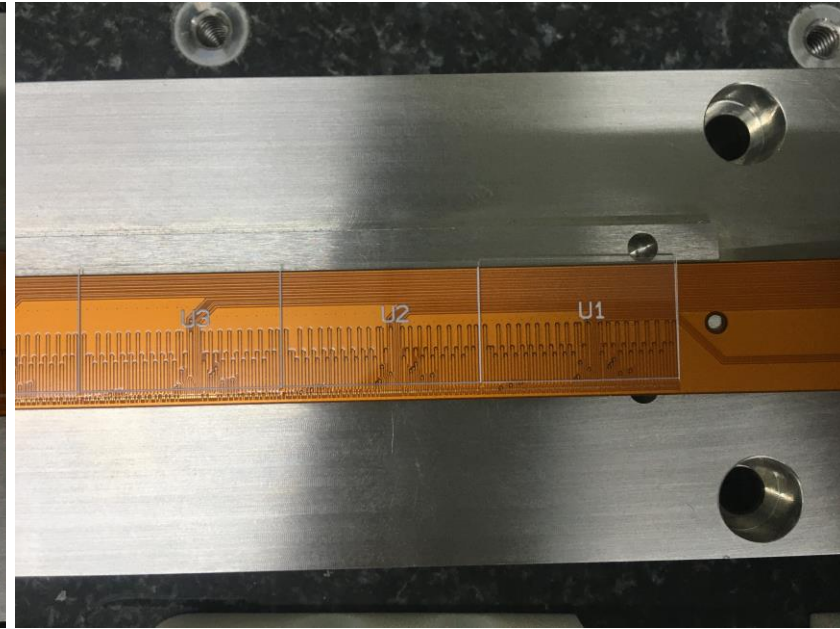
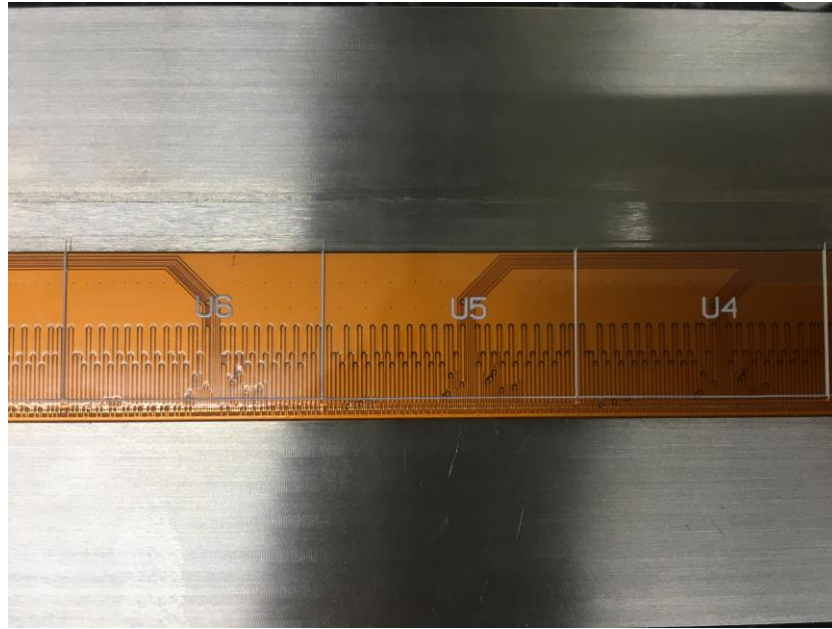
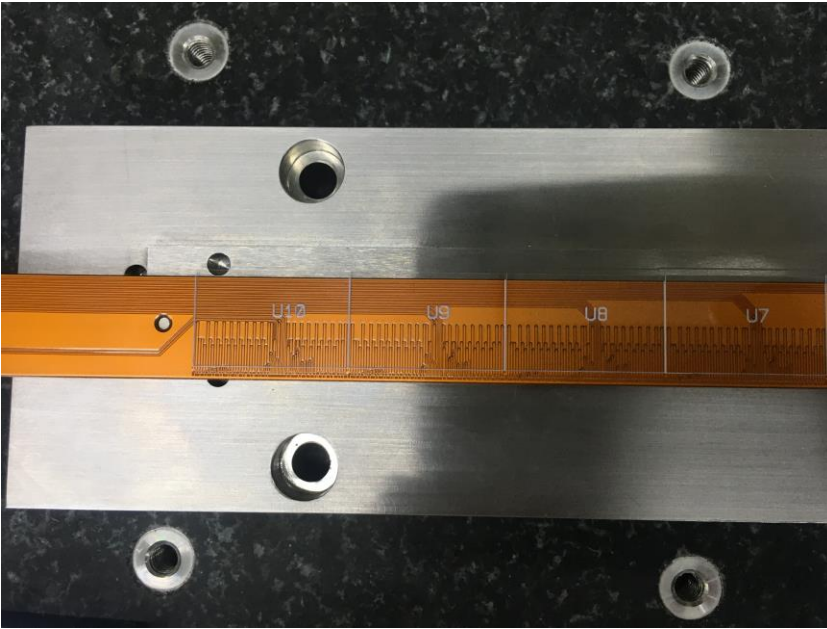
- Vacuum chuck for Flex cable.
- Can suck the flex on the chuck on both sides.
- Two pairs of positioning pins.
 - Pins for positioning **after** wire-bonding.
 - Pins for positioning **before** wire-bonding.



- Hard to move the flex unless torque is applied.



- Test with Glass on the flex.



- When the vacuum is removed, there is very little deformation.
- Maybe it could be improved with screws.

