

Glue Dispensing Status

Xinhui Huang

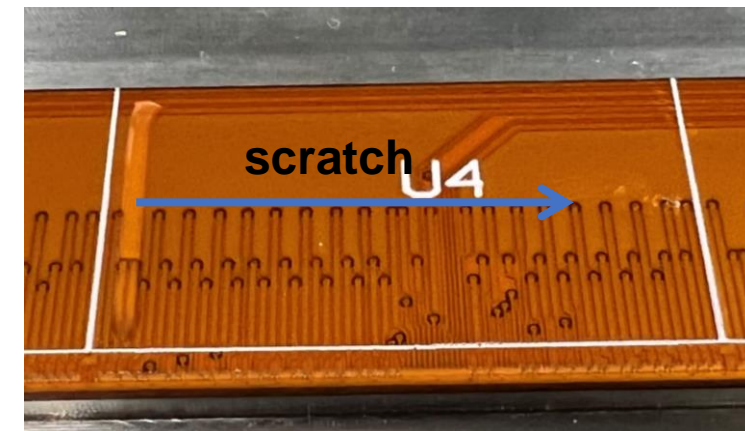
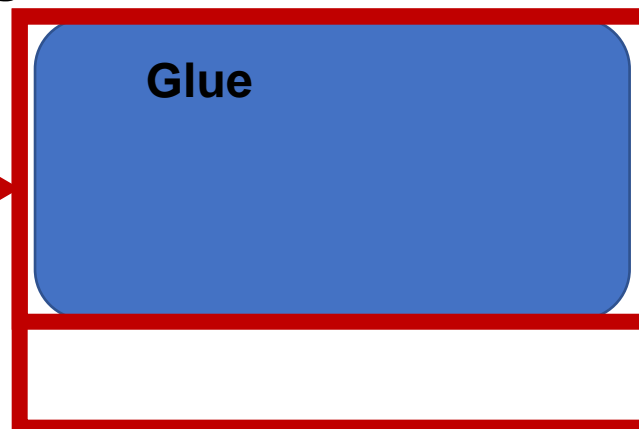
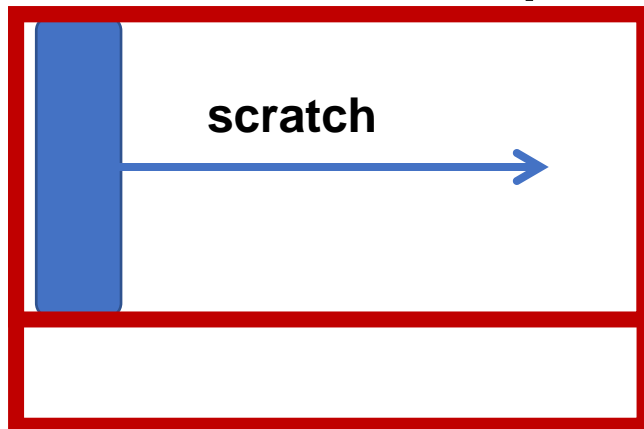
Glue dispensing with gantry

Two patterns are designed for glue dispensing with gantry:

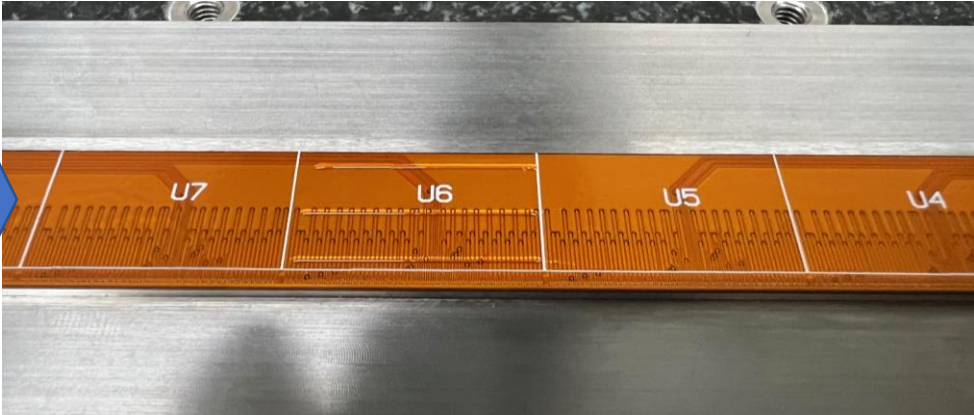
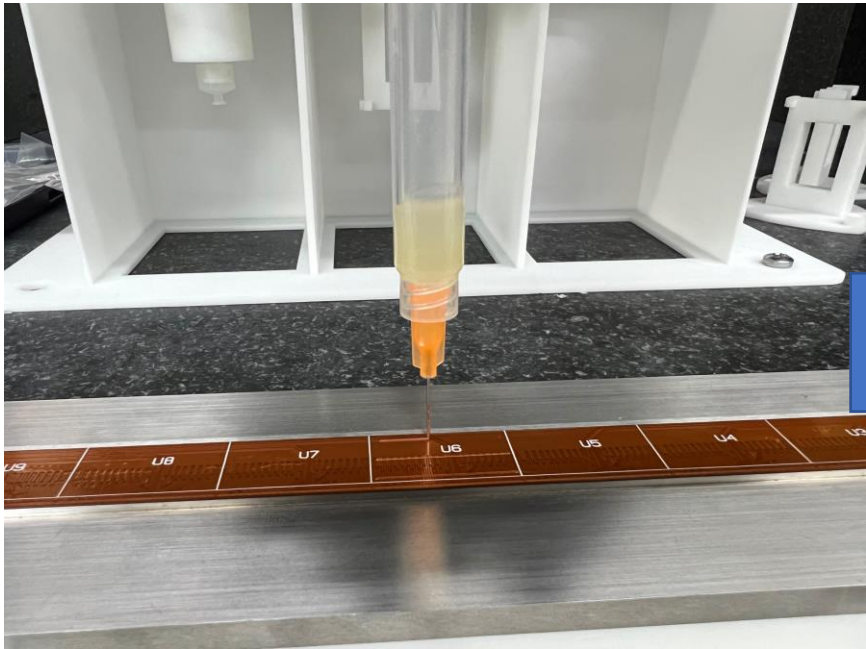
1. Directly dispense three or more lines and press the sensor
 - The glue coverage is not very good
 - Can not apply heavy pressure due to the thickness of the sensor (0.15mm)



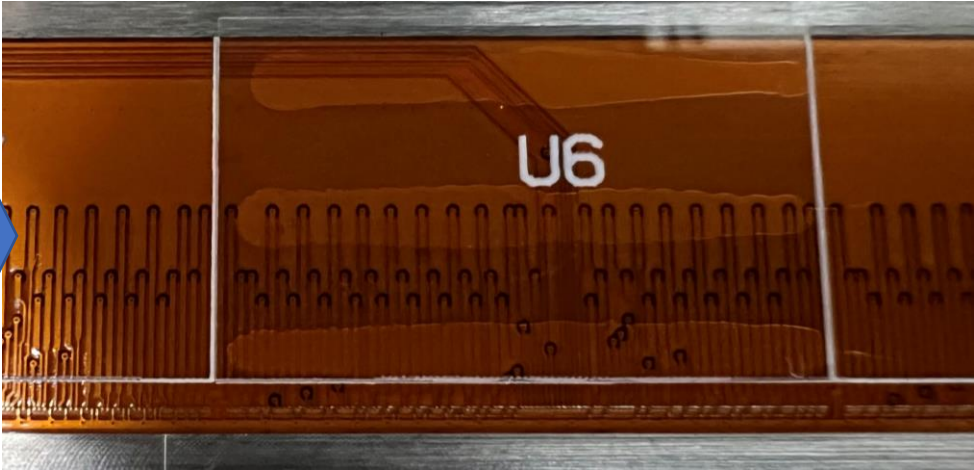
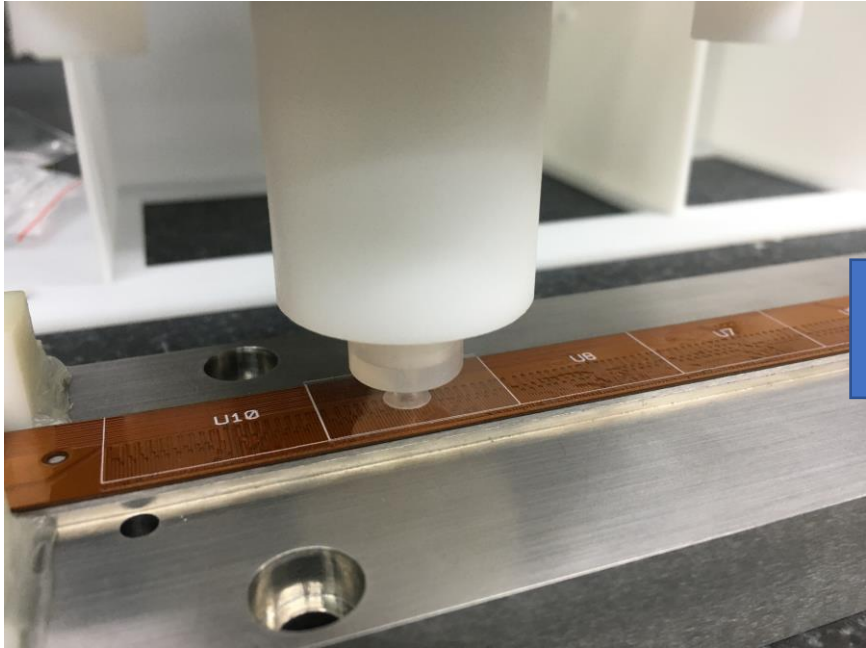
2. Glue one single line and scratch the glue for better coverage
 - Need more complicated tooling



Glue dispensing



Press



Glue dispensing status

The glue covers the bonding pad well

Pressure: 100g

