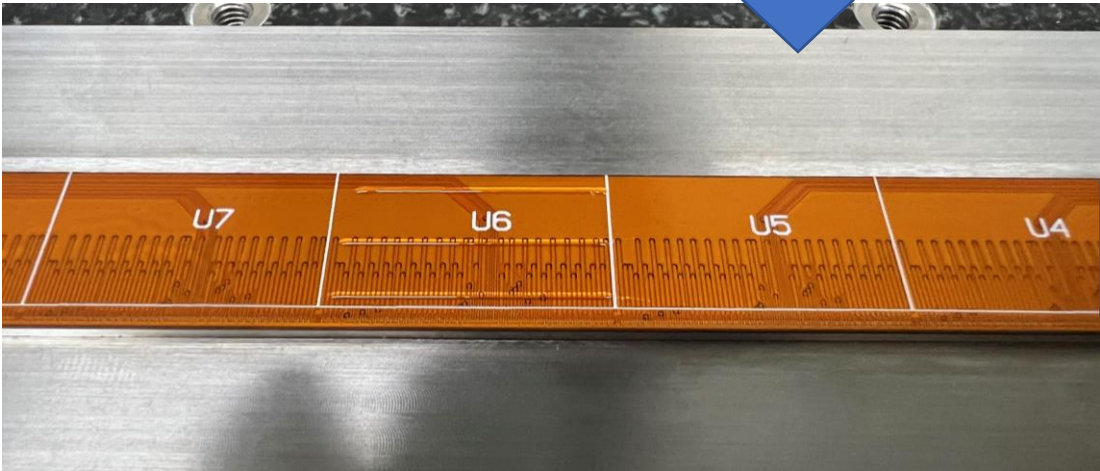
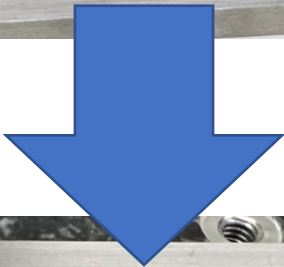
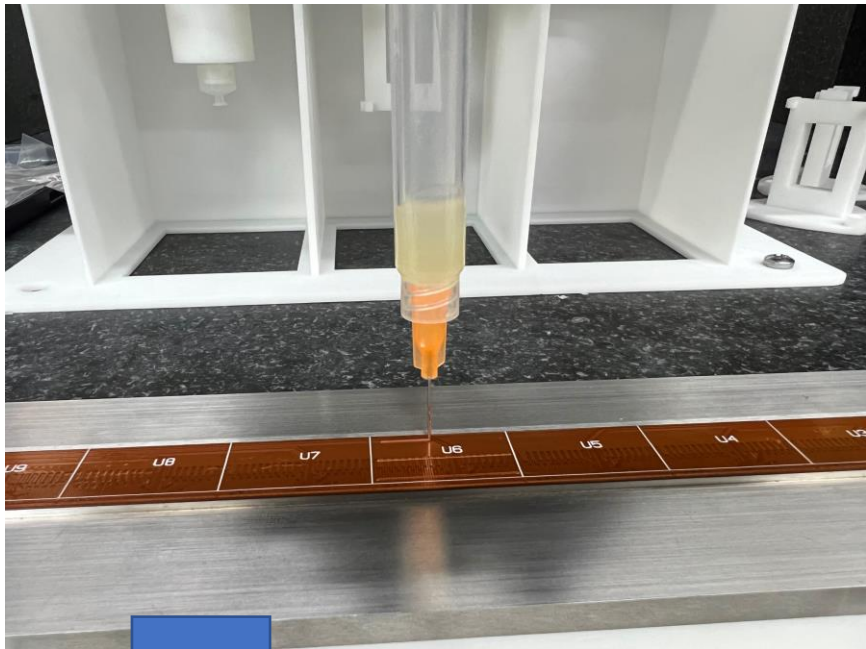


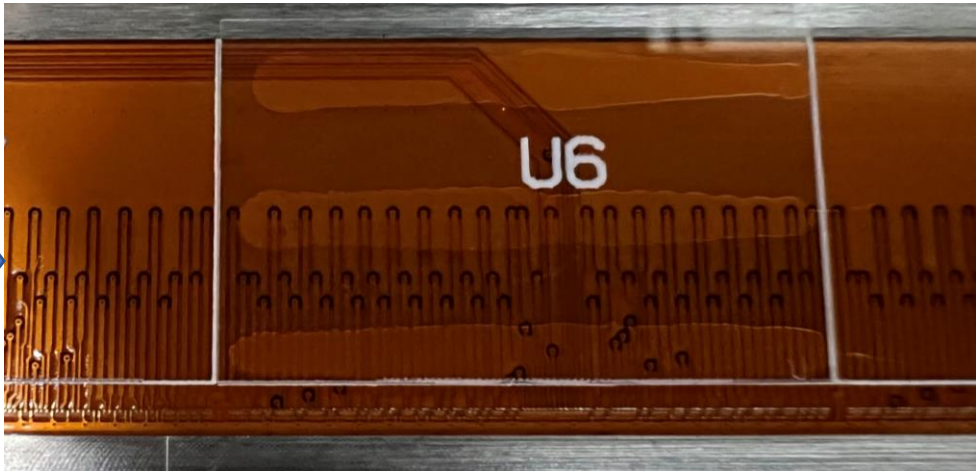
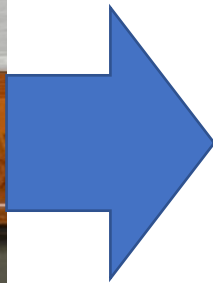
Glass assembly for loading test

Xinhui Huang

Glue dispensing



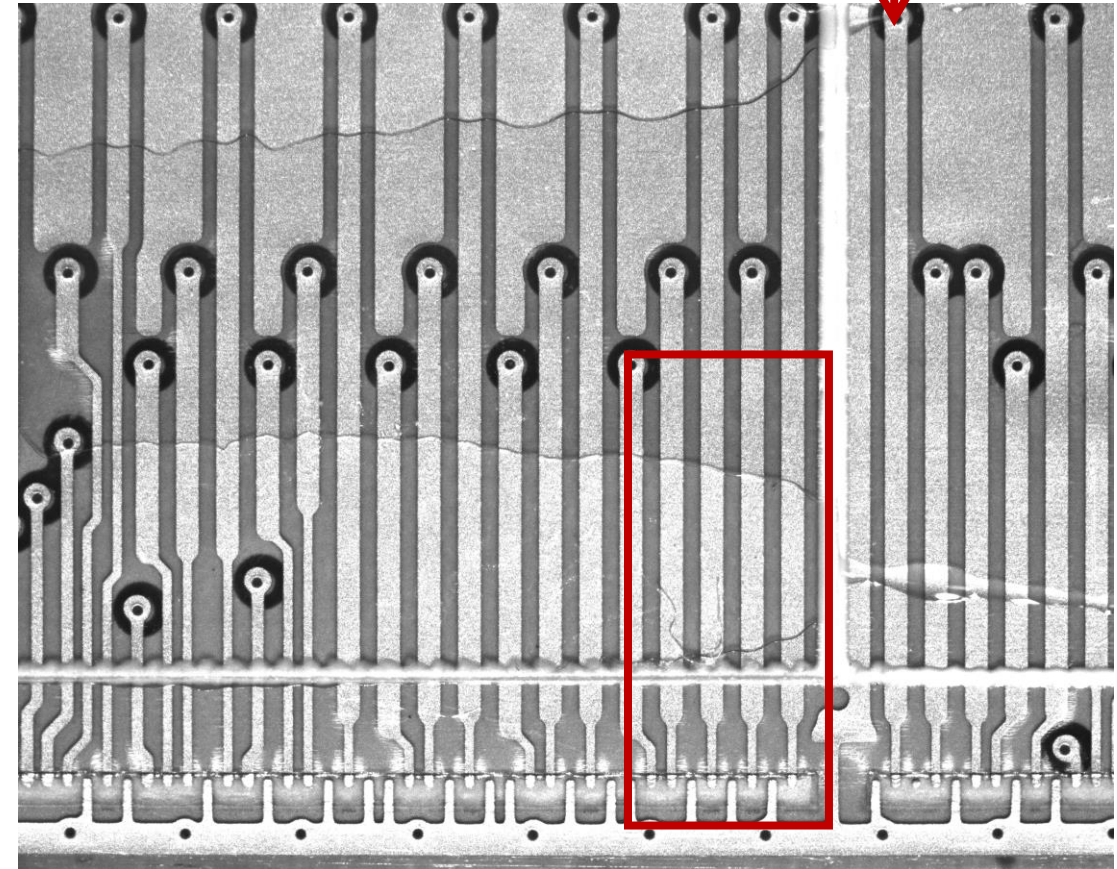
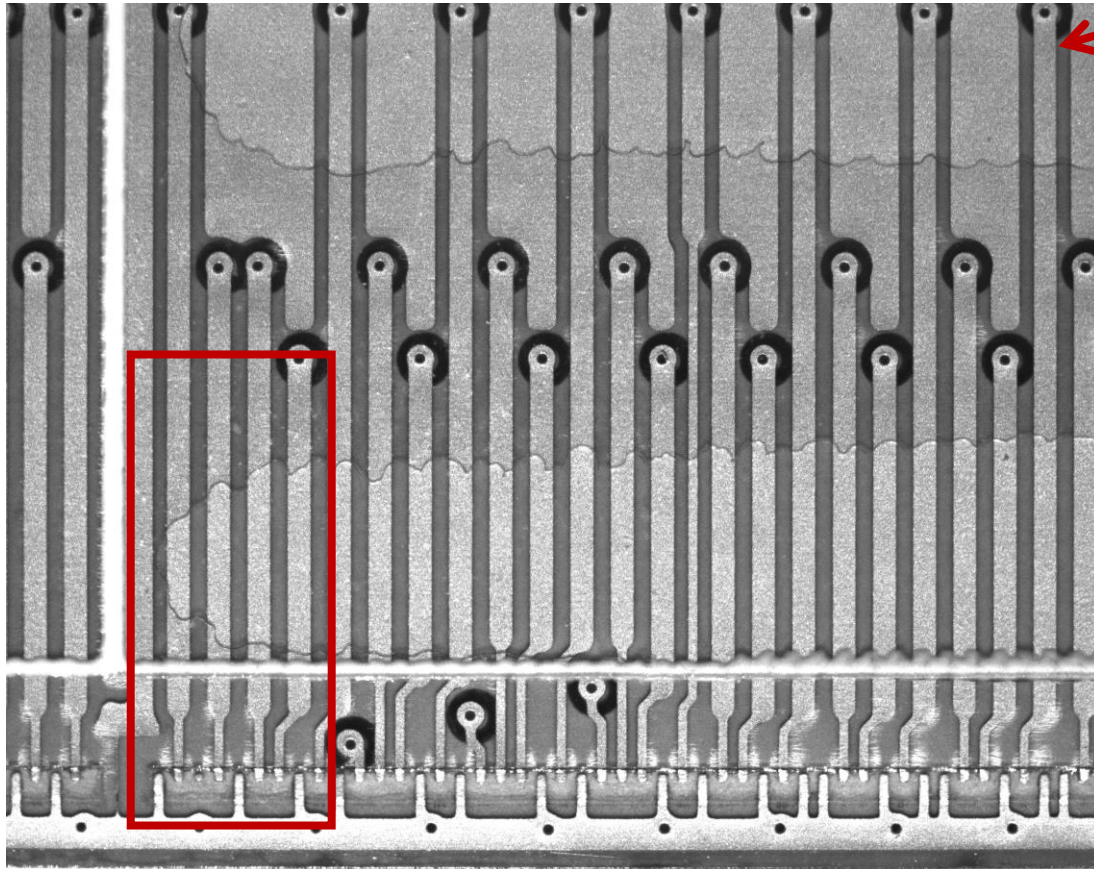
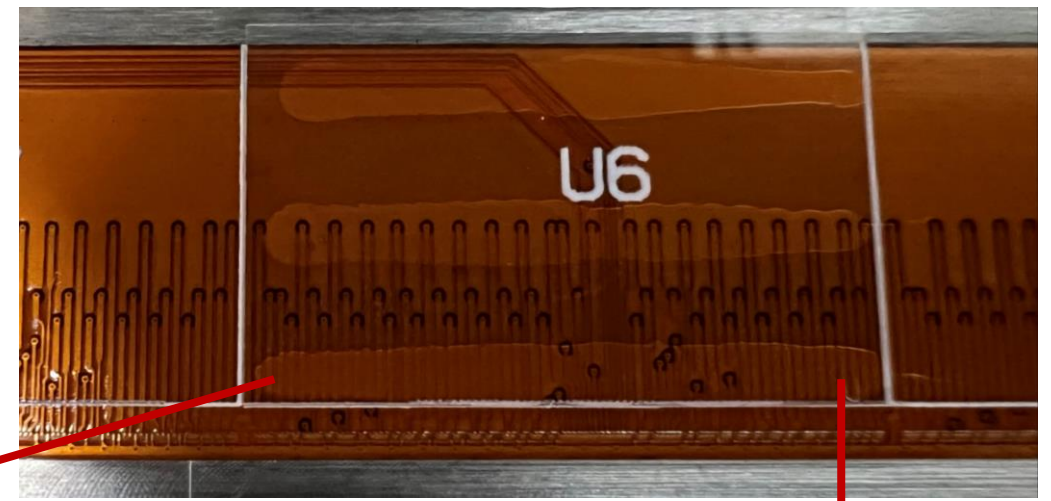
Press



Glue dispensing status

The glue covers the bonding pad well

Pressure: 100g



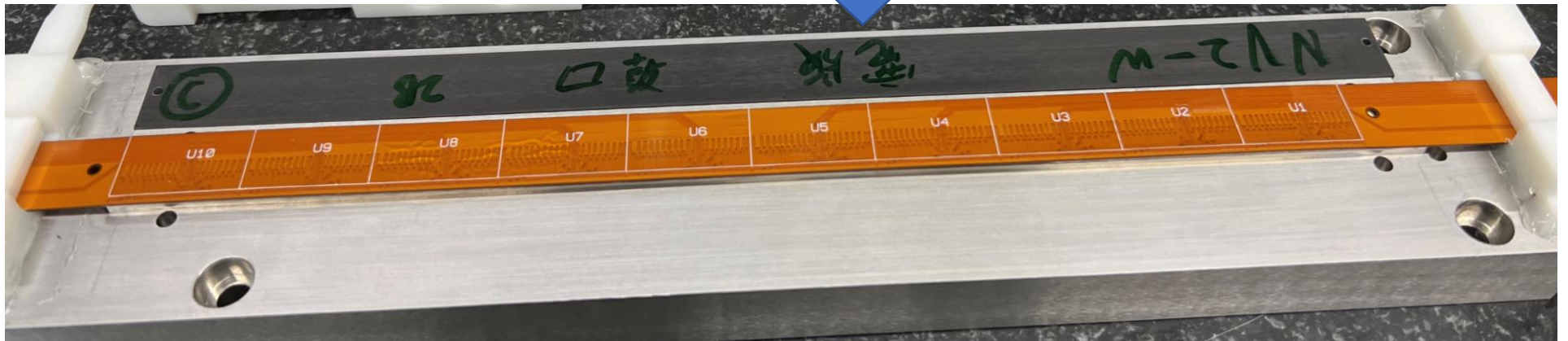
Assemble the test ladder
Already sent to structure assembly test

Two flex cables in total:
one by gantry;
one by hand;

Put the glass on the flex by hand.



Wait for 8 hours
until the glue is dry



Assemble the test ladder

Glue the two flex on the support with double-sided tape (for convenience)



Dimension Problem



