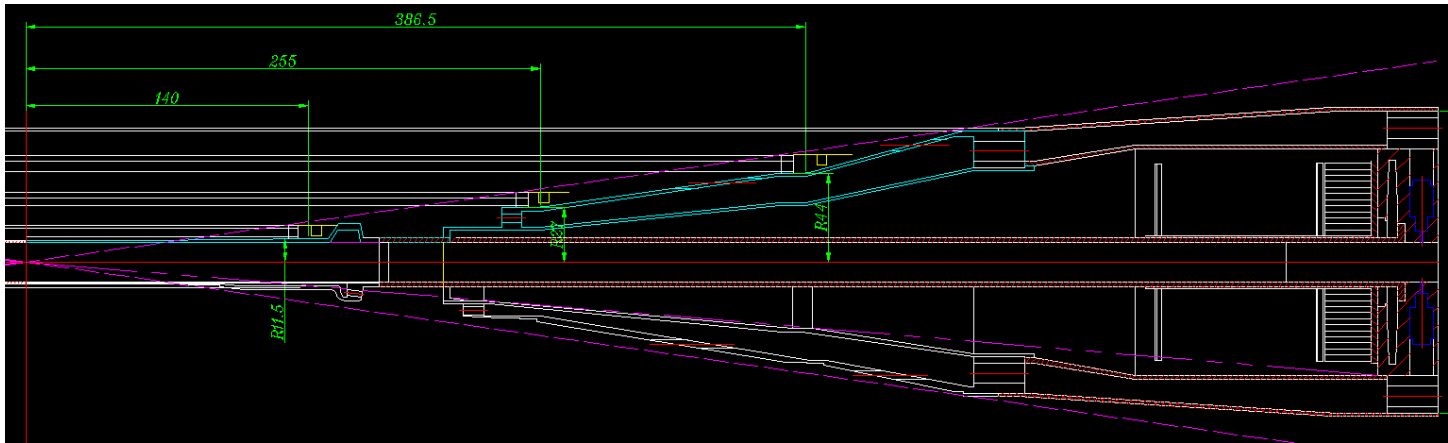


FEA of the ladder support

layer	Size (WxHxL mm)	Max def. mm (Fully loaded)	Max def. mm (Self weight)
inner	17.4x1.7x260		
middle	17.4x2.7x486	0.084	0.026
outer	17.4x3.2x749	0.346	0.107

The preliminary location of the VTX (long barrel) on the beam pipe



The support ring of the innermost layer barrel will be glued on(by 2 parts) / pre machined on the beam pipe?

