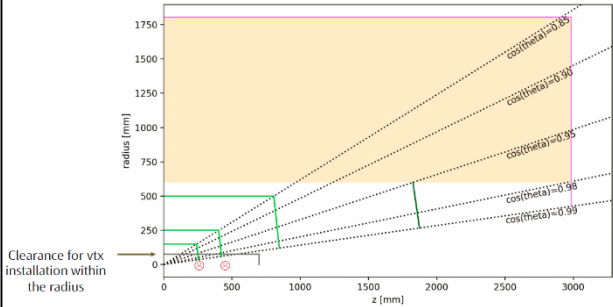
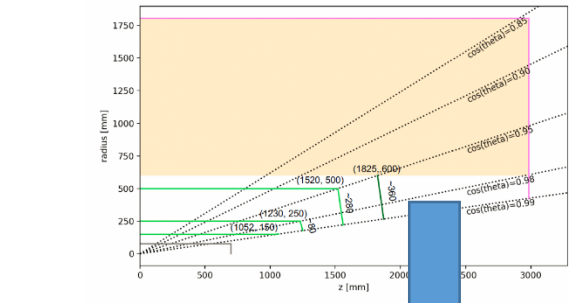


# ITK

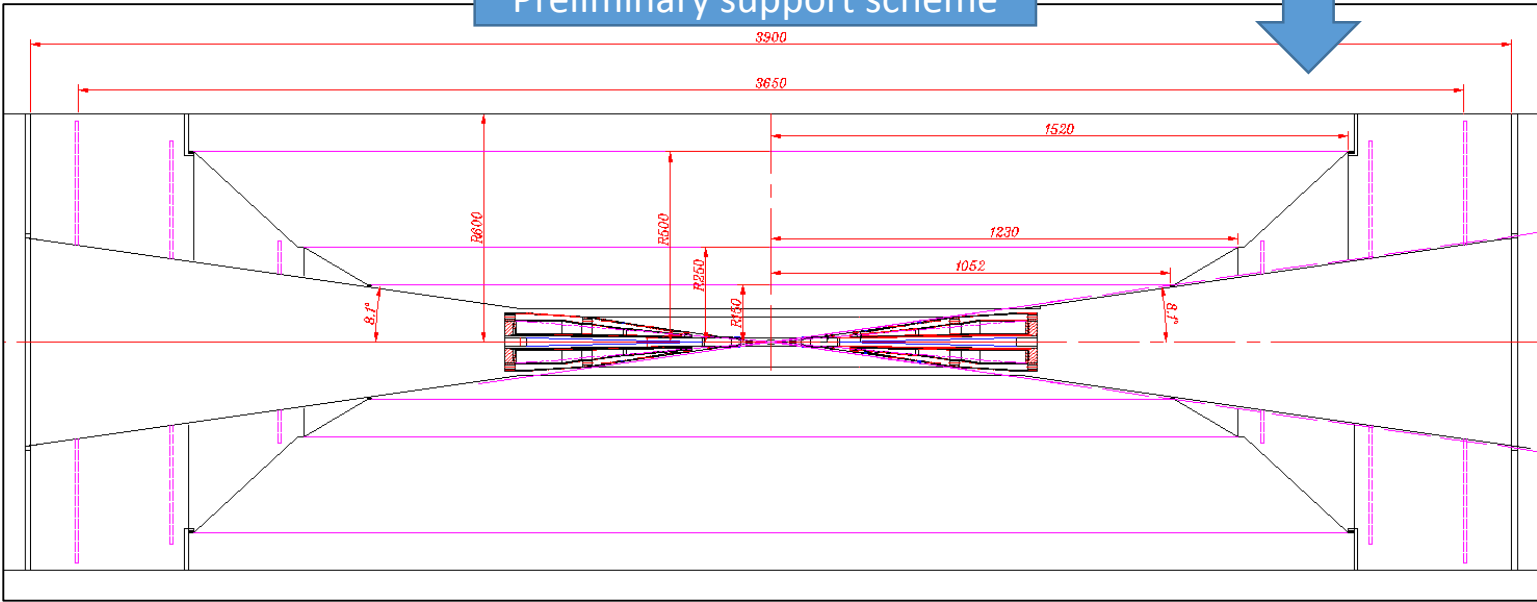
More boundary condition from VTX installation



A possible layout for ease of installation



Preliminary support scheme

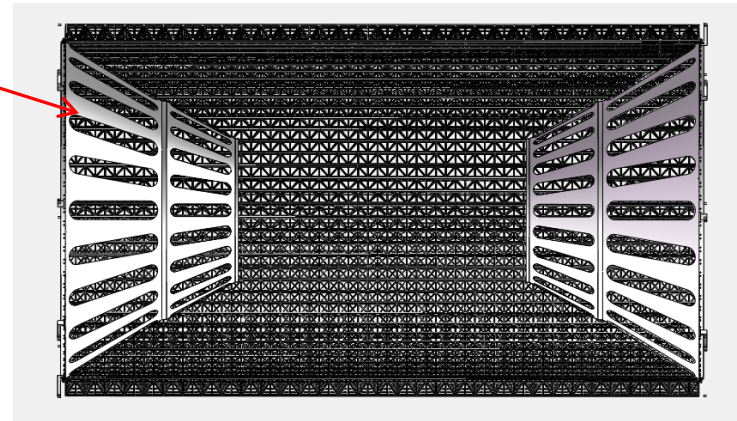
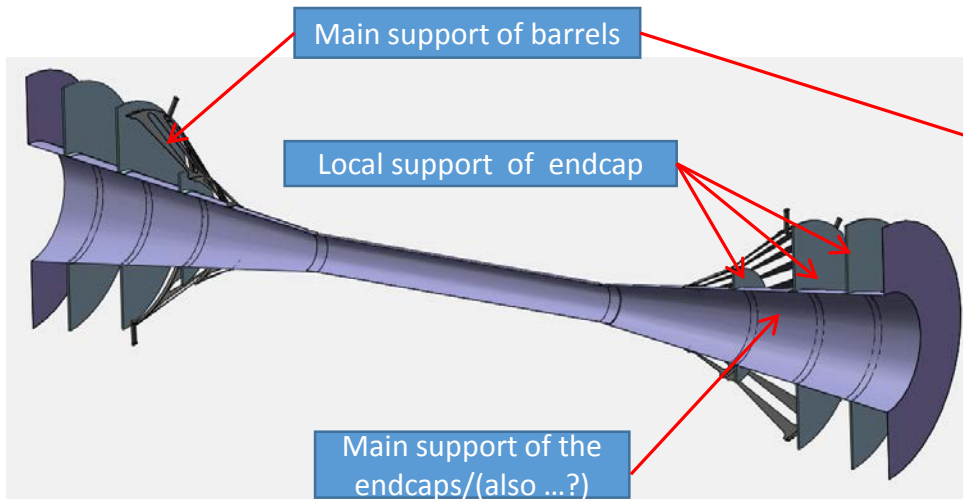
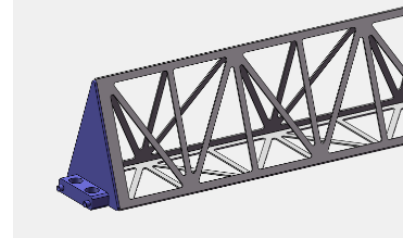


# Preliminary support scheme

Local support:

Barrels stave - truss structure

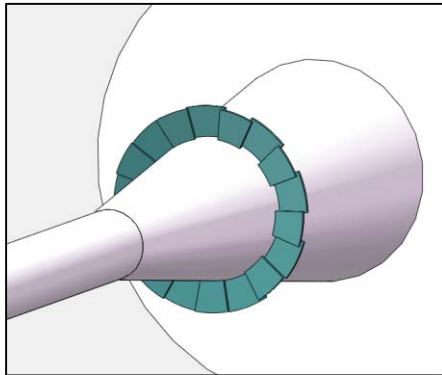
Endcaps - flat ring



# ITK endcap

Tentatively modeled the endcap perpendicular to acceptance boundary.

front and back offset  
(perpendicular to acceptance boundary)



Support with no offset  
(perpendicular to acceptance boundary)



Currently go with the flat endcap. If it is really necessary to make the endcap perpendicular to the acceptance boundary, more study needed.

Detector working temperature? (airtight vessel?)