

Update of ECAL barrel beam background simulation

Weizheng Song

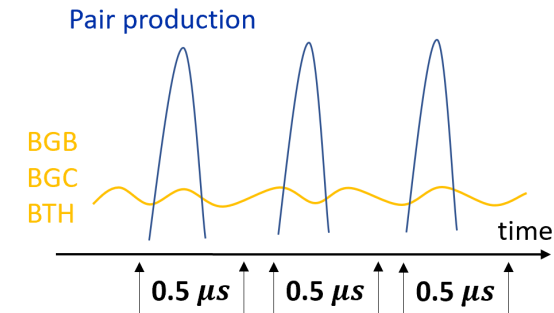
IHEP

24.7.5

Beam background simulation

Background	Rate/Hz	$N_{MCParticle} / \text{bunch}$ $\propto 0.5 \mu\text{s}$ time window
Pair production	---	~ 150
Beam-Gas Bremsstrahlung (BGB)	49,181,897.5	~ 25
Beam-Gas Coulomb (BGC)	636,290,798.6	~ 318
Beam Thermal Photon Scattering (BTH)	200,960,378.6	~ 100
Synchrotron Radiation	---	---
Radiative Bhabha	---	---
Touschek	---	---

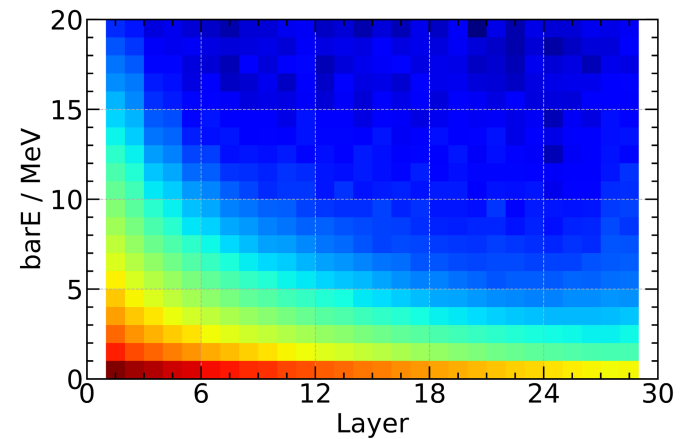
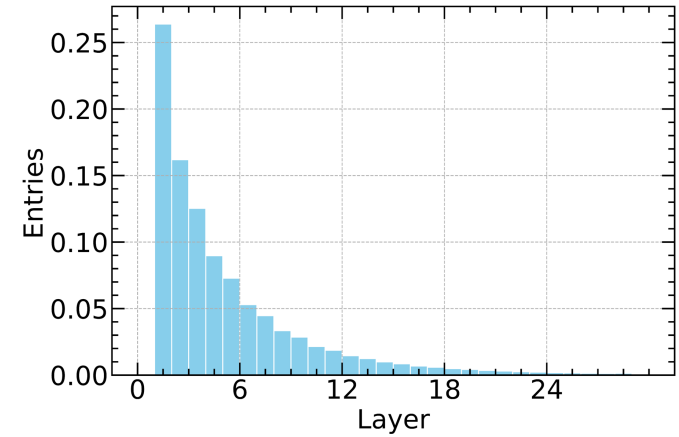
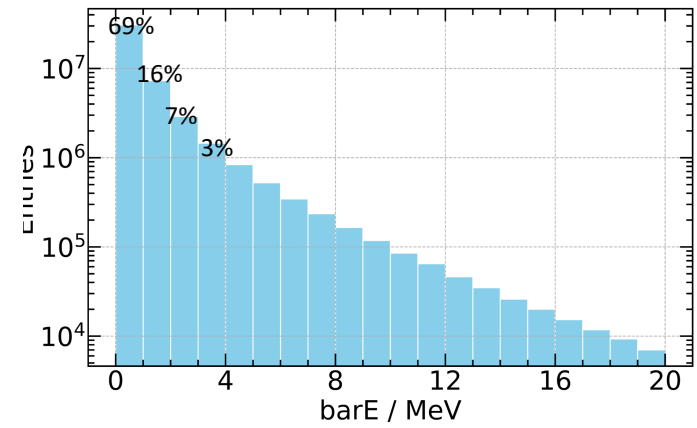
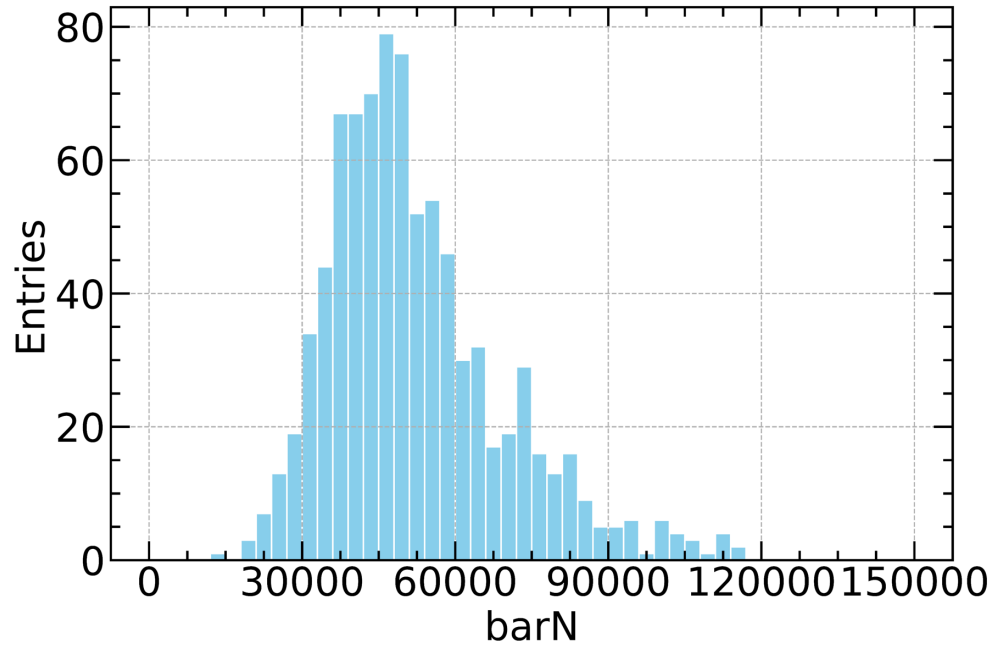
- **Single beam** in higgs mode.
- Using **4 types** of beam backgrounds.
- 1 event: 0.5 us time window.



- Simulation of **barrel** long crystal bar ECAL.
- Assuming **delta response** in each crystal.

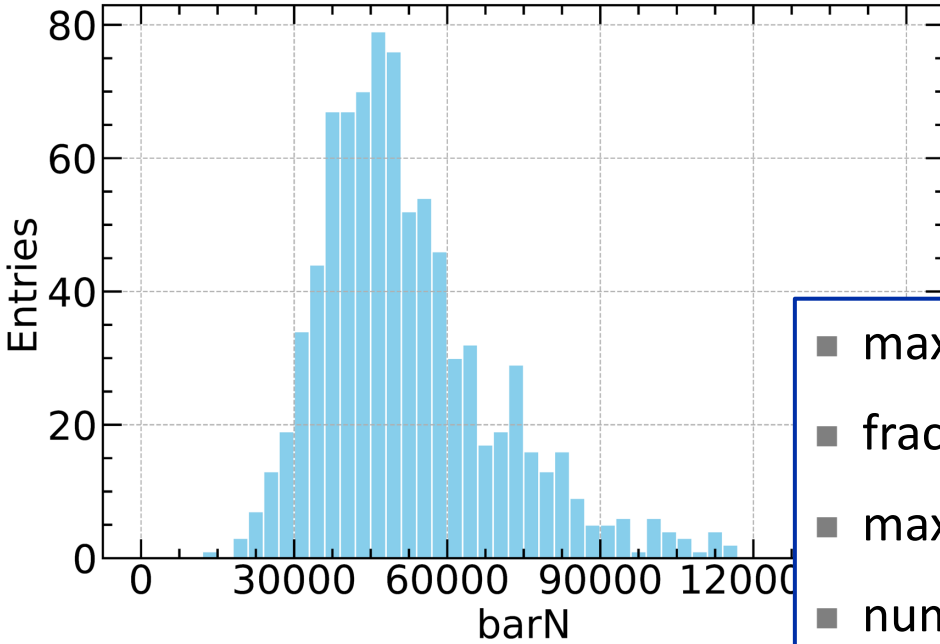
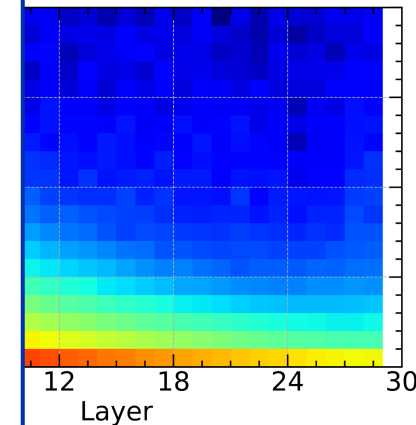
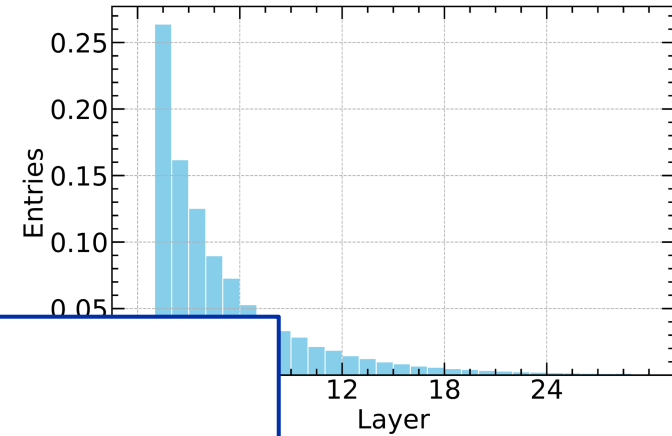
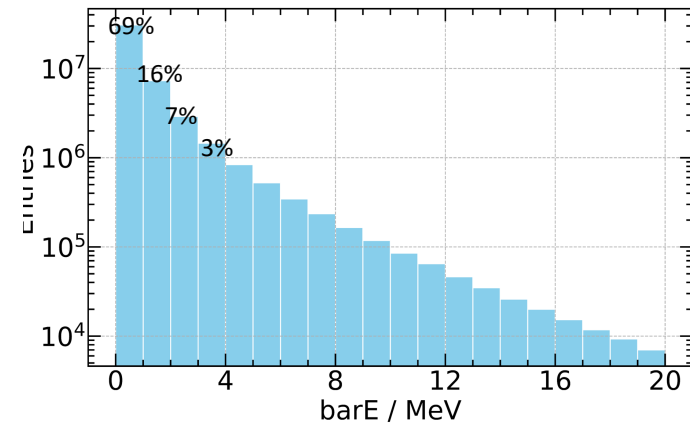
Count

■ There are 850 events in total.



Count

- There are 850 events in total.



- max of fired bars = 116,705
- fraction of bars = 26.4%
- max of fired bars in 1st layer \approx 30,810
- number of bars in 1st layer \approx 16,800
- bars in 1st layer keep fired!
- count: 2 MHz

Backup