

USTC Site Report

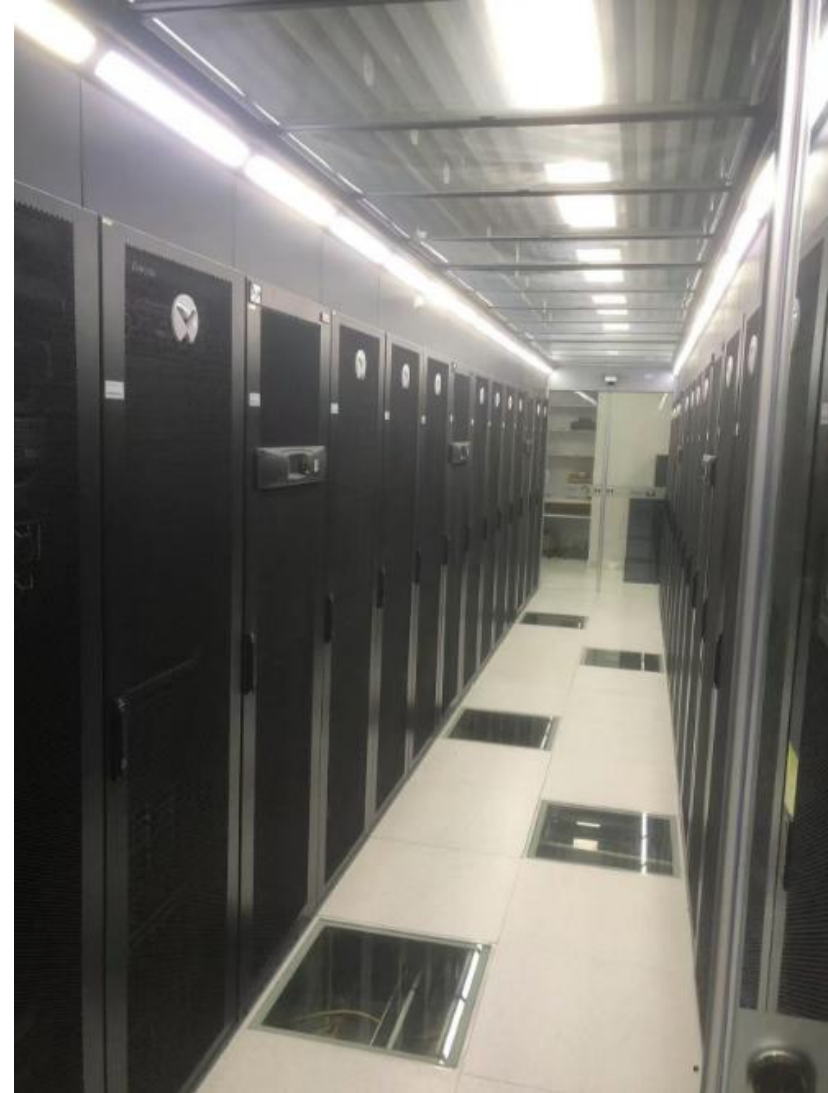
Wenhao MA

CLHCP2014

2024.11.16

Overall Status

- First built in 2010
used for USTC ATLAS and D0 groups
- Rebuilt in 2019
used for ATLAS, CMS and ALICE
(also for BES, RHIC...)
NOT USTC users only
- A modular data center



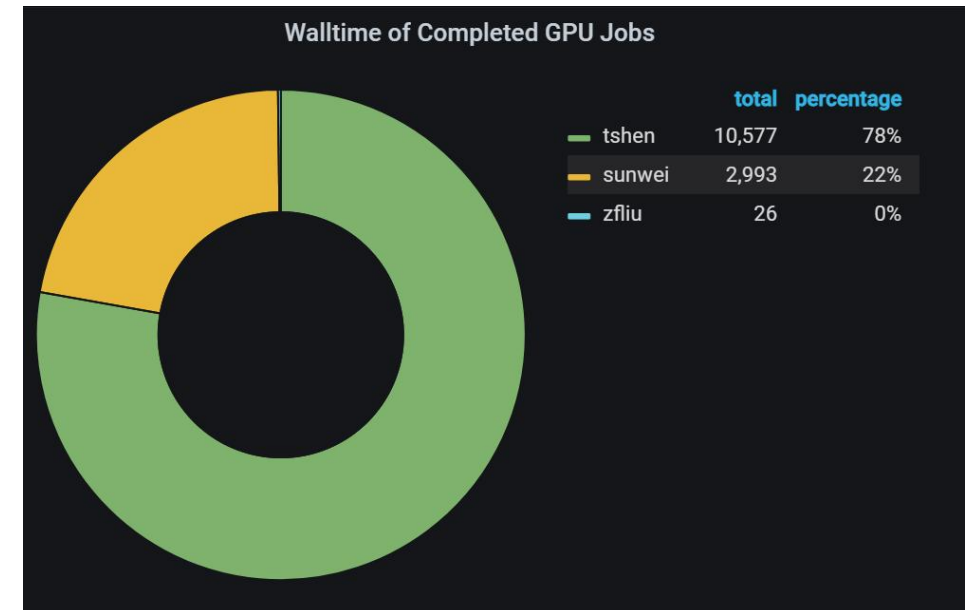
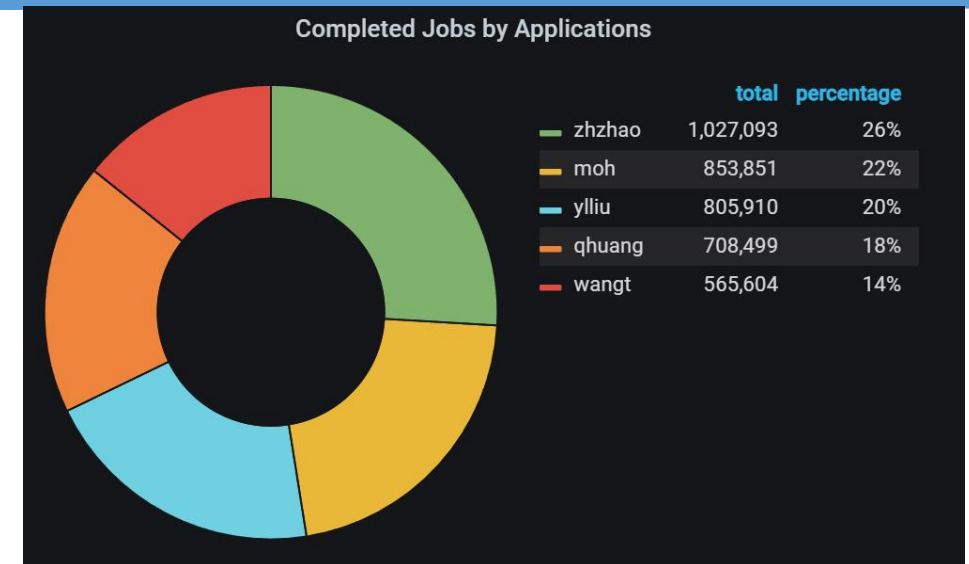
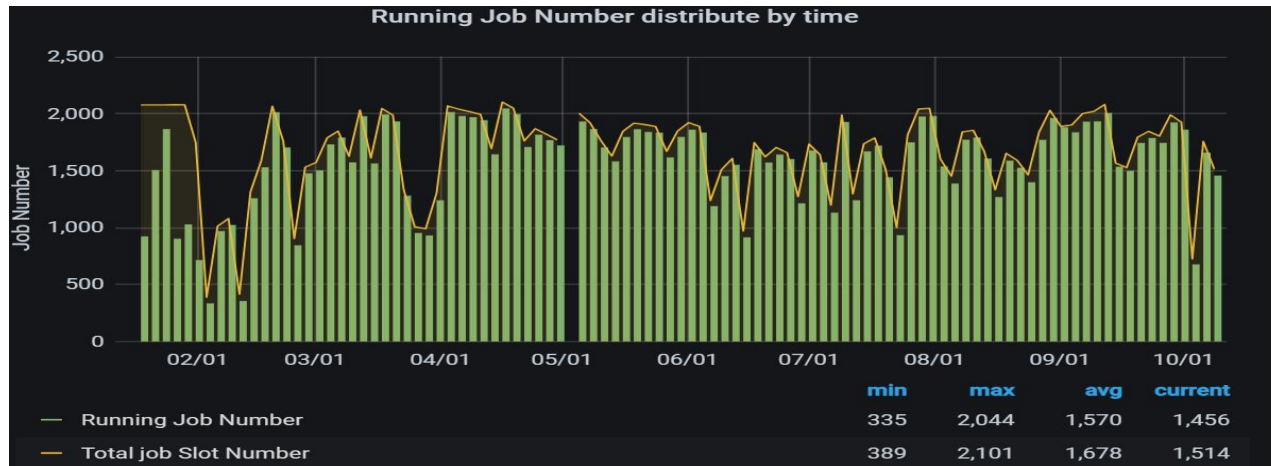
Overall Resource

- CPU (~70%) + GPU(~30%)
 - CPU: ~2000 cores
 - GPU: ~ 20 servers, 500k cuda cores
 - Shared by LHC projects + BES +....
- Disks
 - 3 lustre Fs
 - In total ~4PB
 - Shared by different projects
- ~10 Functional servers



Statistics

- Total users: 540
- Usage:
 - 7,387,980 CPU hours, 10,642,054 jobs
 - 13,597 GPU hours, 9,875 jobs



Software

The whole site is running with remote management of IHEP experts

- OS: trying to synchronize with CERN/IHEP system
- CVMFS is setup
- Lustre for File System
- Condor for jobs

Tire 3 was once setup for ~1 year, obsoleted due to lack of maintenance

Current situation

- Lack of local professional experts----Thanks to all remote IHEP experts
- Power & cooling & space: reach up to a limit
- Hardware: ~50% > 5years, ~30% >7 or 8 years
- Network: not stable, especially concerning the connection to CERN

Plans

- Is applying for a power extension
- Plan for a cooling system upgrade