

# Progress and Plan

Mingyi Dong

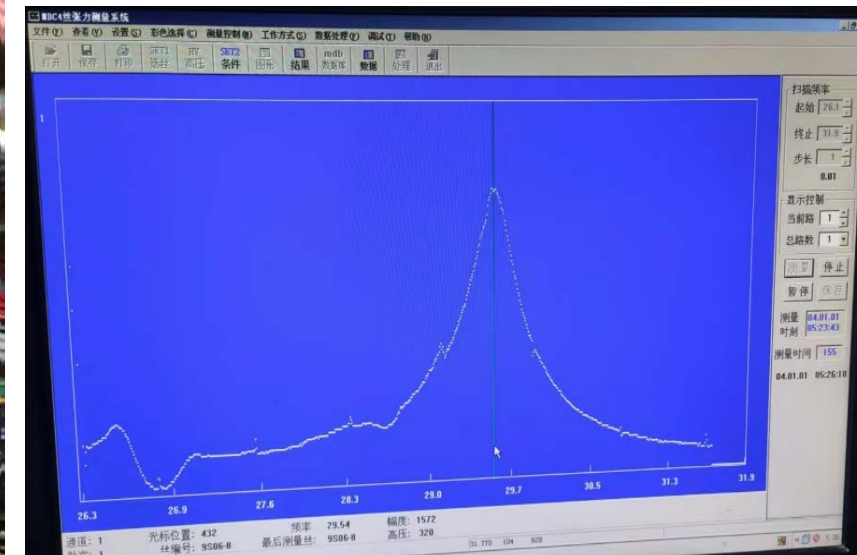
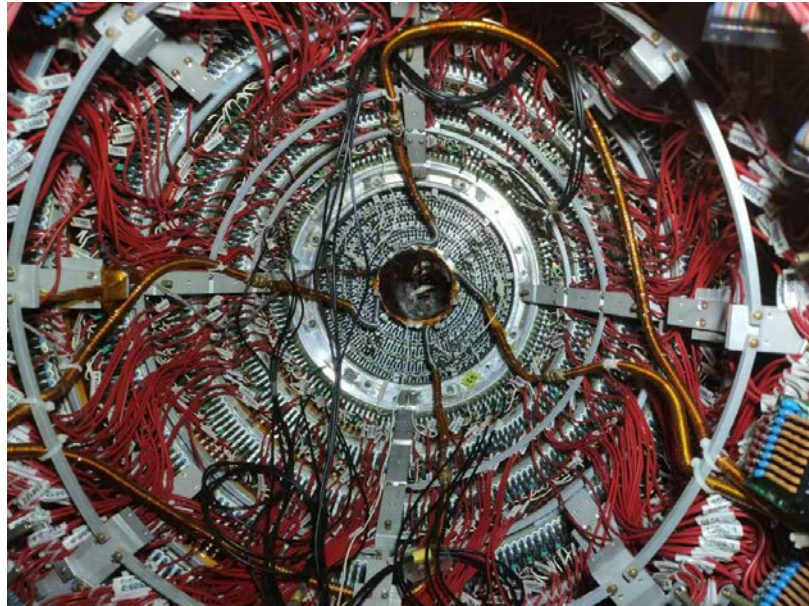
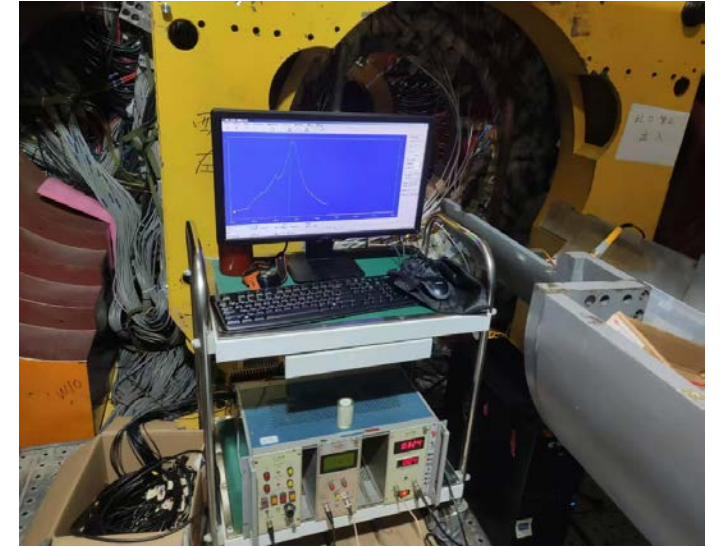
2024.9. 2

# Progress in the experimental hall last week

	Planned tasks last week	Time needed (day)	person in charge	status
3	Wire tension check after glue cleaned	3	Mingyi Dong	done
4	Laser measurement of the original position of the MDC (step and outer parts)	3	Lingling Men	done
5	Preparation of installation of the tools for inner MDC removal	2	Facilities Operation group (Jing Xiaoping)	In progress

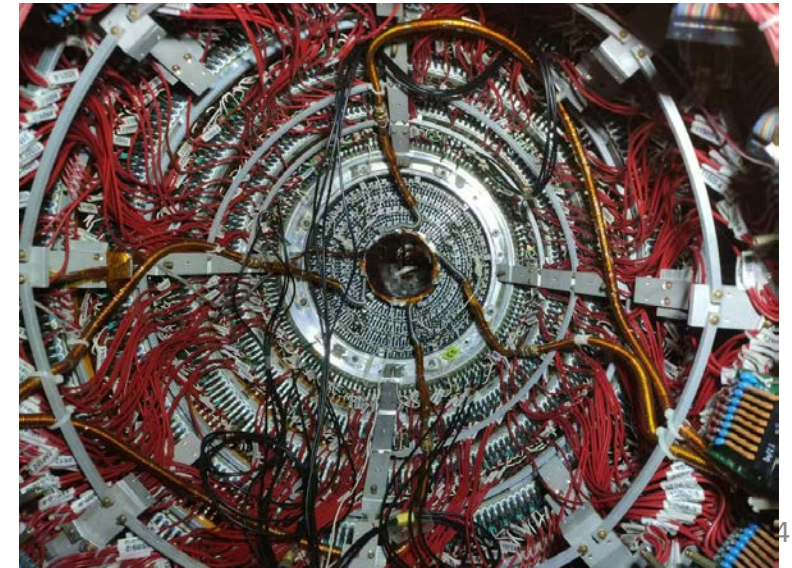
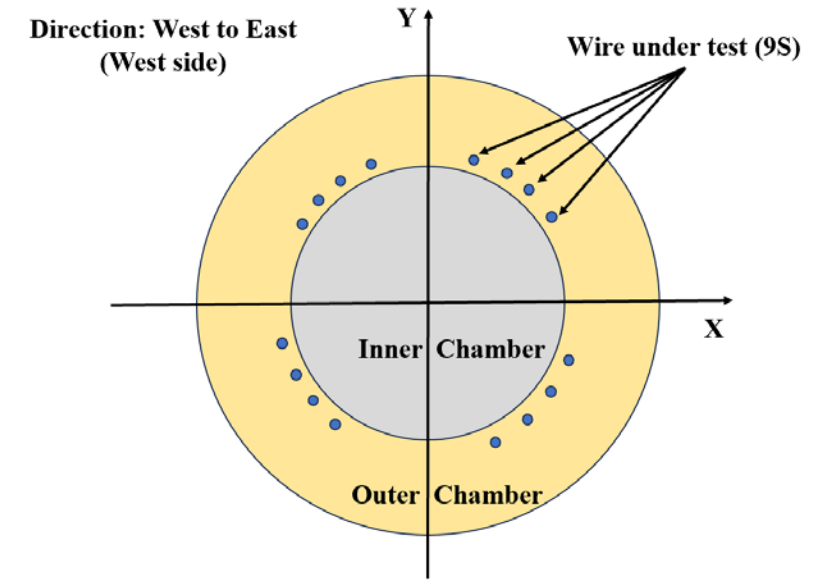
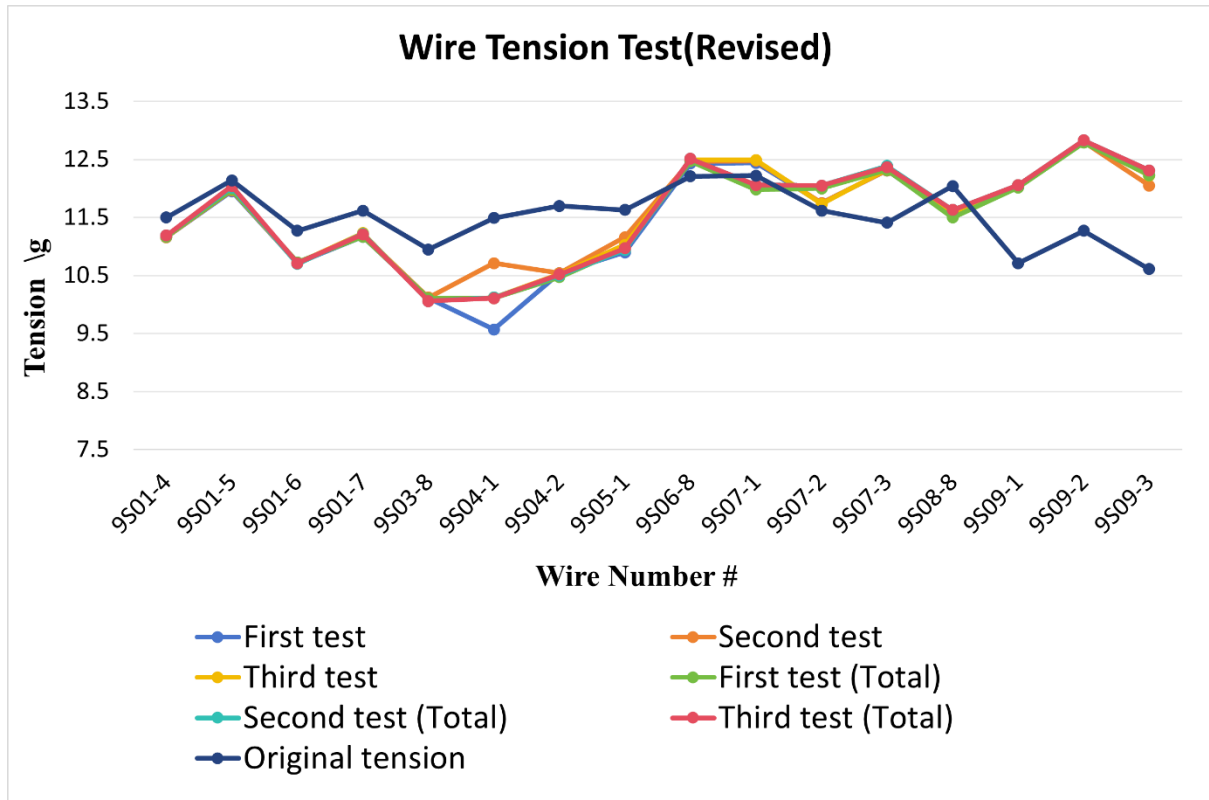
# Wire tension check after glue cleaned

- August 26-28
  - Tested the wire tension of some sense wires in layer 9



# Wire tension check after glue cleaned

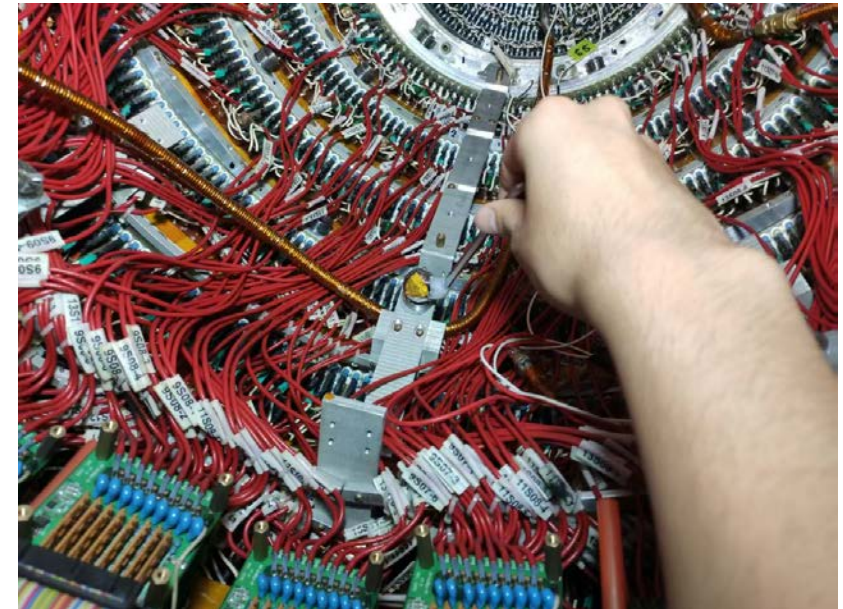
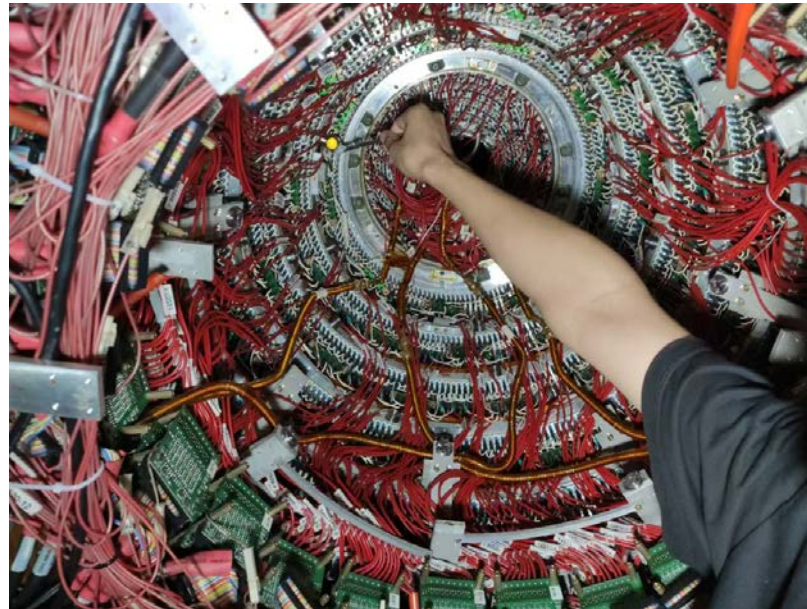
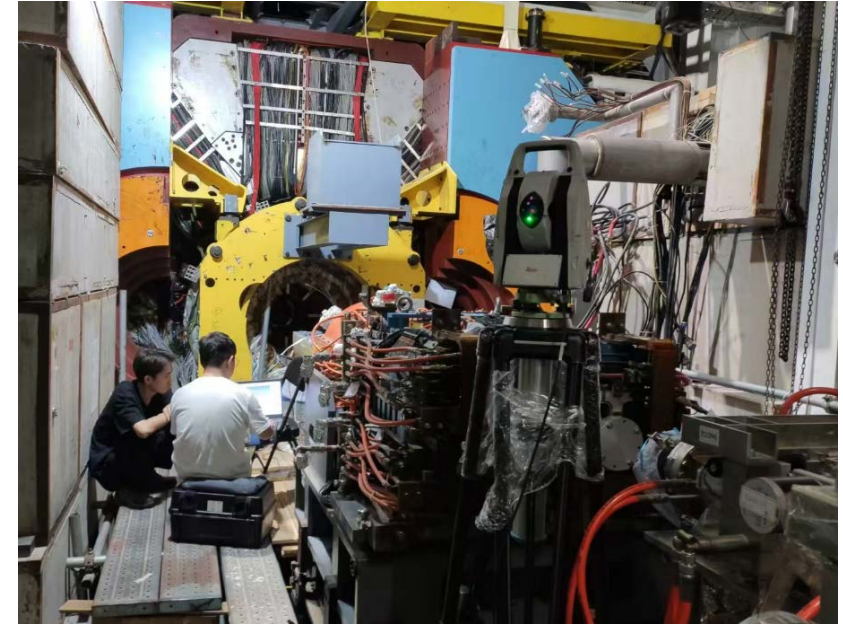
- August 26-28
  - The results are roughly consistent to the original results





# Laser measurement before removal of iMDC

- August 29-30
  - Laser measurement of the original position of the MDC before iMDC removal





# Preparation of the tools for iMDC removal

- August 27-29
  - Moved the legs, the long rail and cooling system to the experimental hall



# Preparation of the tools for iMDC removal

- September 2
  - Fixed the legs on the east side



# Plan for next week

	Tasks	Time needed (day)	person in charge
1	Installation of the tools for inner MDC removal	5	Facilities Operation group (Jing Xiaoping)
2	Change MDC operation gas	3	Xiaolan Luo
3	Final preparation before pulling out iMDC	3	Mingyi Dong
4	Final check before pulling out iMDC	1	Mingyi Dong



Backup

# Schedule (may be updated each week)

No.	tasks	Duration (day)	Start time and stop time	Sub-system involved
1	Removal of equipment of machine		July 1- Aug. 6	Utility, Small angle lum. Detector and ZDD, Beam pipe, slow control
2	Pull-out of EEMC			Utility, EMC, TOF, MDC, MUC
3	Removal of inner chamber (Operate simultaneously on both sides )	51	Aug. 7- Sep.7 Sep.8- Sep. 28	MDC, MDC electronics, Gas, Mechanics, Laser Alignment group, Trigger, DAQ, Slow control
4	Installation of CGEM	44	Sep.29- Nov. 11	CGEM group, MDC, MDC electronics, Gas, Mechanics, Laser Alignment group, Trigger, DAQ, Slow control
5	Recover EEMC		Nov. 12-Dec.30	Utility, EMC, TOF, MDC, MUC
6	Recover equipment of machine			Utility, Small angle lum. Detector, ZDD, Beam pipe, slow control,
total		180 days	July 1- Dec.30	



# Key tasks before extraction of iMDC and installation of CGEM

- CGEM Mock-up insertion test ( Done, successful )
- Laser alignment preparation
- Extraction of the inner MDC is considered to be the most critical point.  
Continue inner chamber extraction test
  - Preliminary discussion on cooling the connecting flange
- Continue CGEM cosmic-ray test to gain more experience with the full detector
- CGEM integrated and tested with BESIII DAQ, trigger, and slow control