

Progress and Plan

Mingyi Dong

2024.8.26

Progress in the experimental hall (8.12-18)

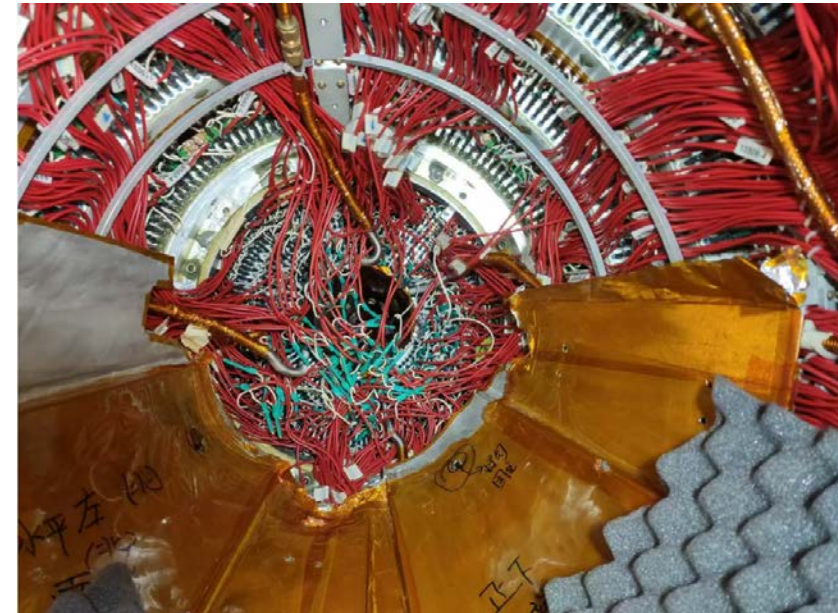
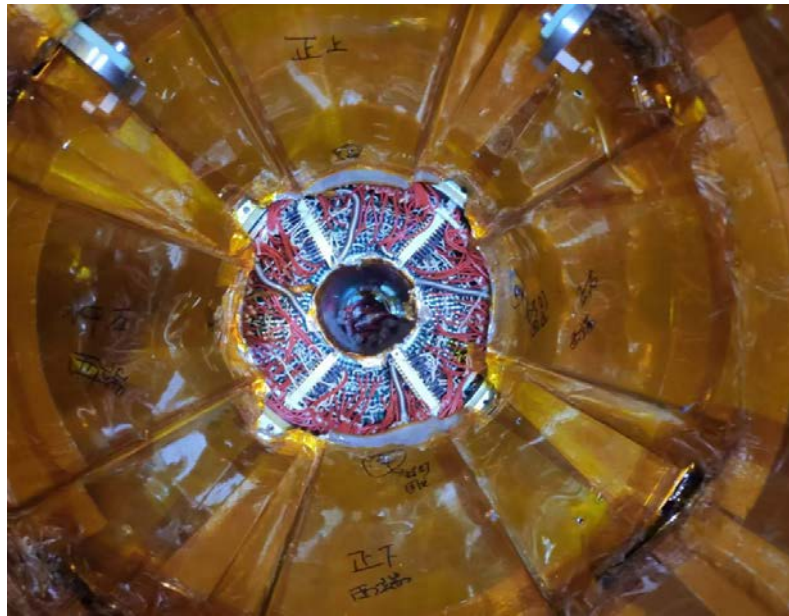
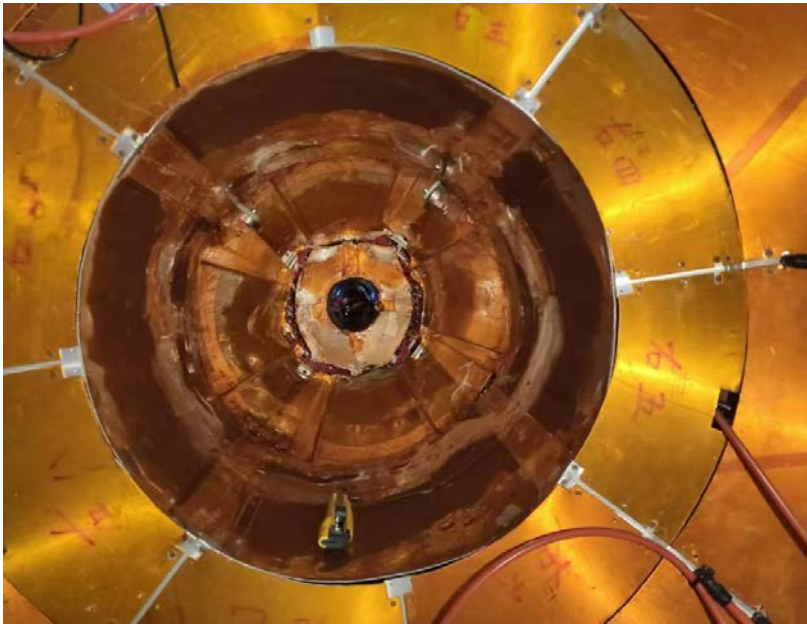
	Planned tasks last week	Time needed (day)	person in charge	Status
1	Install the shielding plates for protection (east end)	1	Mingyi Dong	done
2	Start to remove the glue on first step (east end)	7-?	Jing Dong	Started
3	Prepare the support structure for operation at MDC on West side	1	Facilities Operation group (Jing Xiaoping)	done
4	Remove the shielding plates, and support structure for shielding plates on west side	2	Mingyi Dong	done
5	Remove the cables and preamps of inner chamber on west side	2	Mingyi Dong	done

Progress in the experimental hall (8.19-26)

	Tasks	Time needed (day)	person in charge	Status
1	Finished removal of the glue on the screws and the feedthroughs of the first step (east side)	3 ~ 5	Mingyi Dong	done
2	Install the shielding plate for protection(west side)	3	Mingyi Dong	done
3	Removal of the glue on the flanges, screws and dowels (west side)	3	Mingyi Dong	done
4	Preparation of Wire tension check after glue cleaned	2	Jin liangchenglong	done
5	Discussion and Preparation of Laser measurement of the original position of the MDC (step and outer parts)	2	Lingling Men, Mingyi Dong	done
6	Preparation of installation of the support legs (Draw the center line)	2	Lingling Men, Jing Xiaoping	done

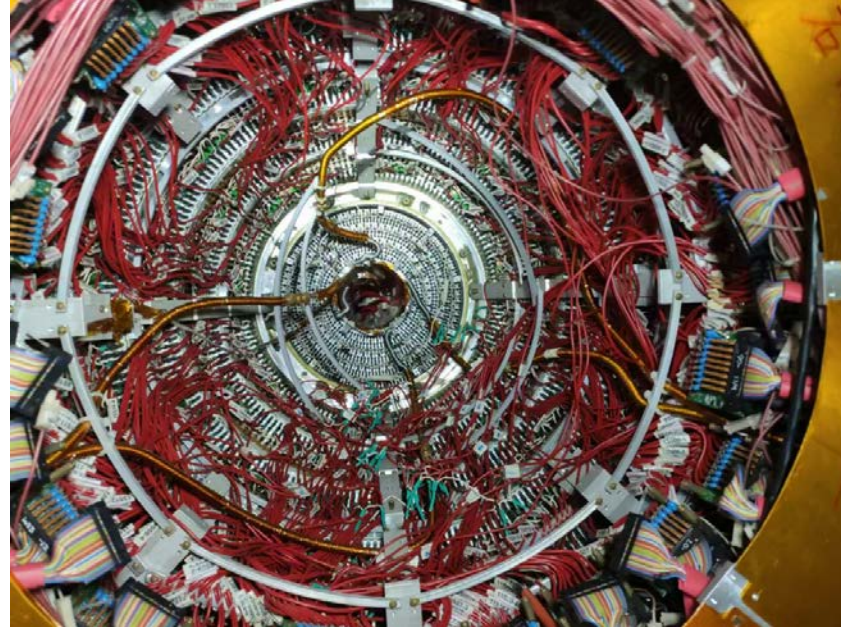
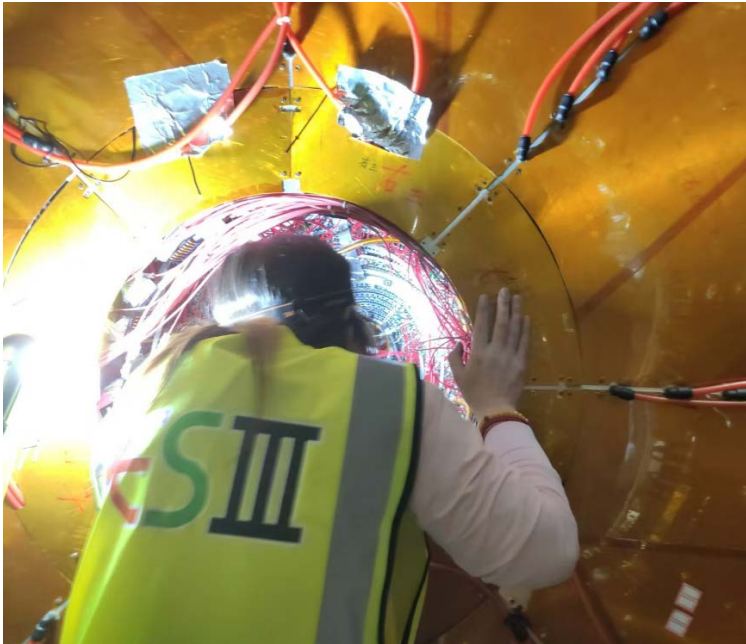
Removal of the shielding plates on West side

- On August 14
 - Removed the shielding plates on west side



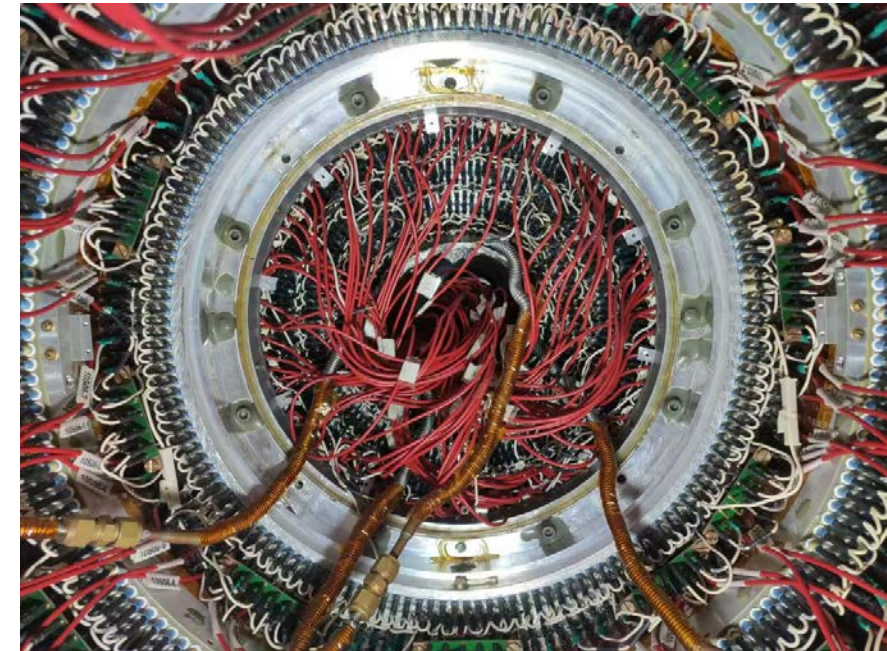
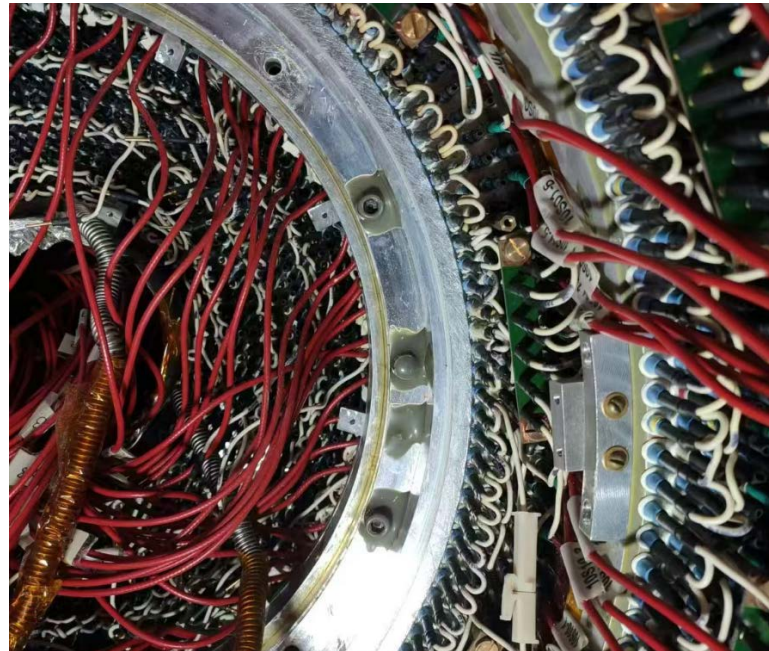
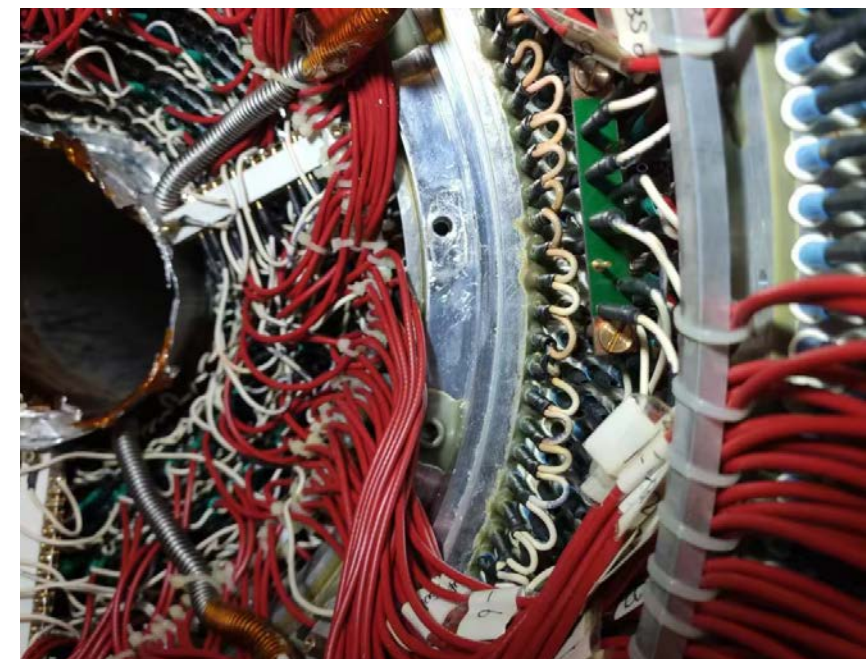
Removal of cables and preamps on west side

- On August 15
 - Removed the cables and preamps of the inner chamber on west side



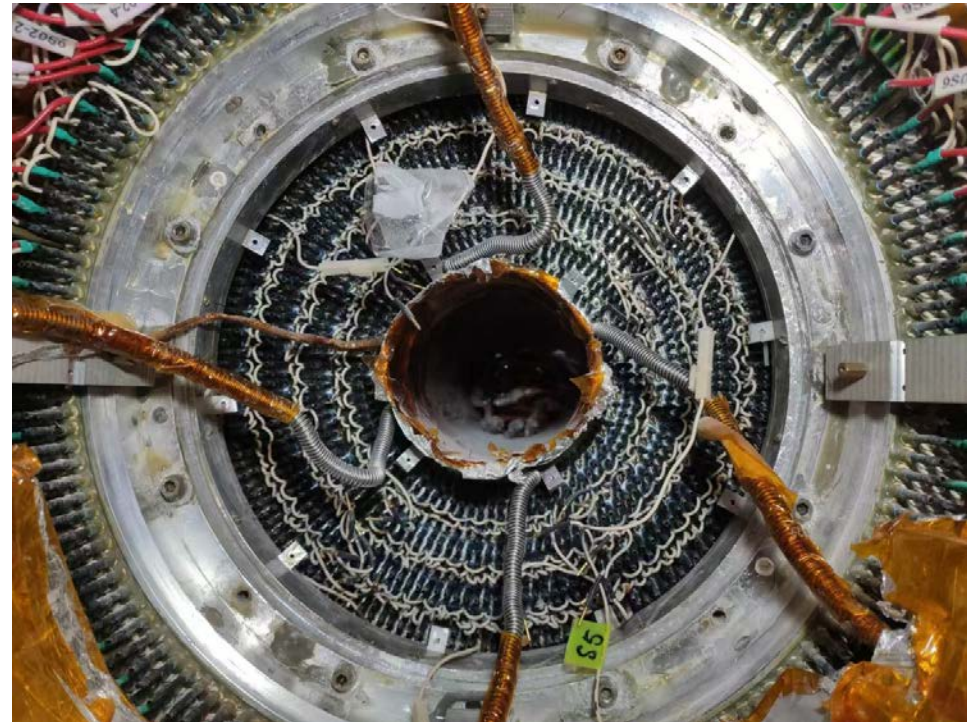
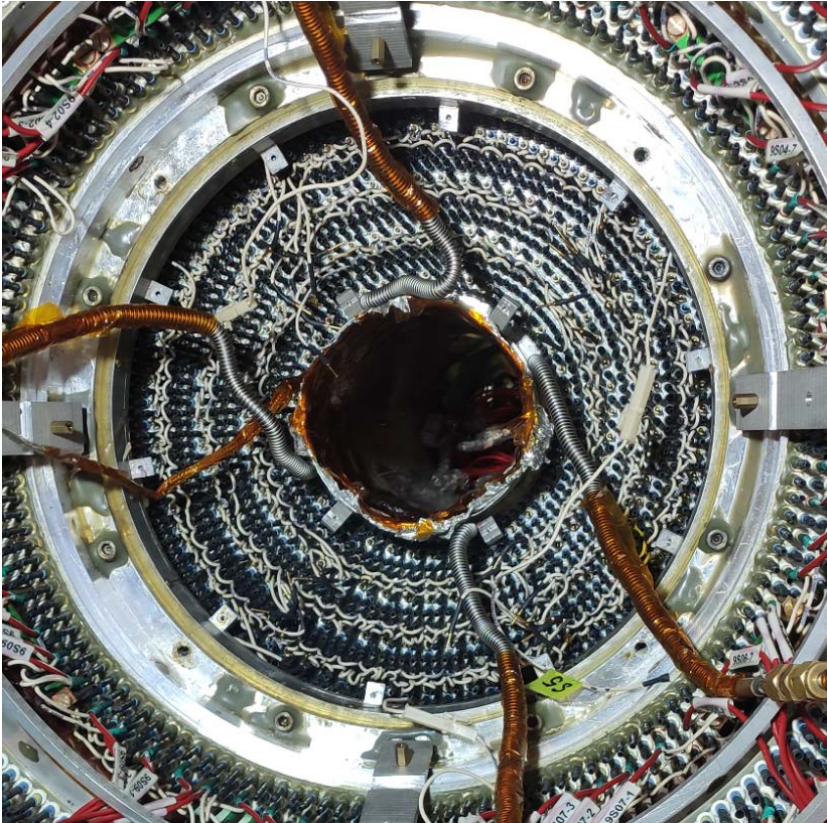
Removal of the glue on east side

- August 12-23
 - removal of the glue on the screws and the feedthroughs of the first step (east side)



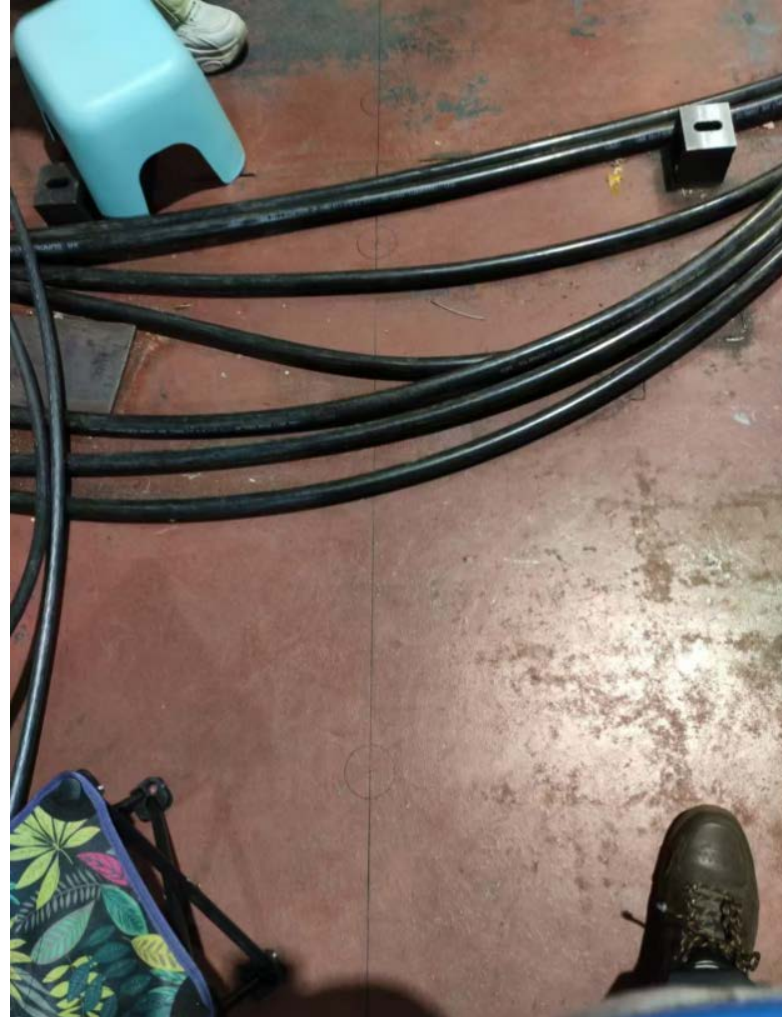
Removal of the glue on west side

- August 21-23
 - Removal of the glue on the flanges, screws and dowels (west side)



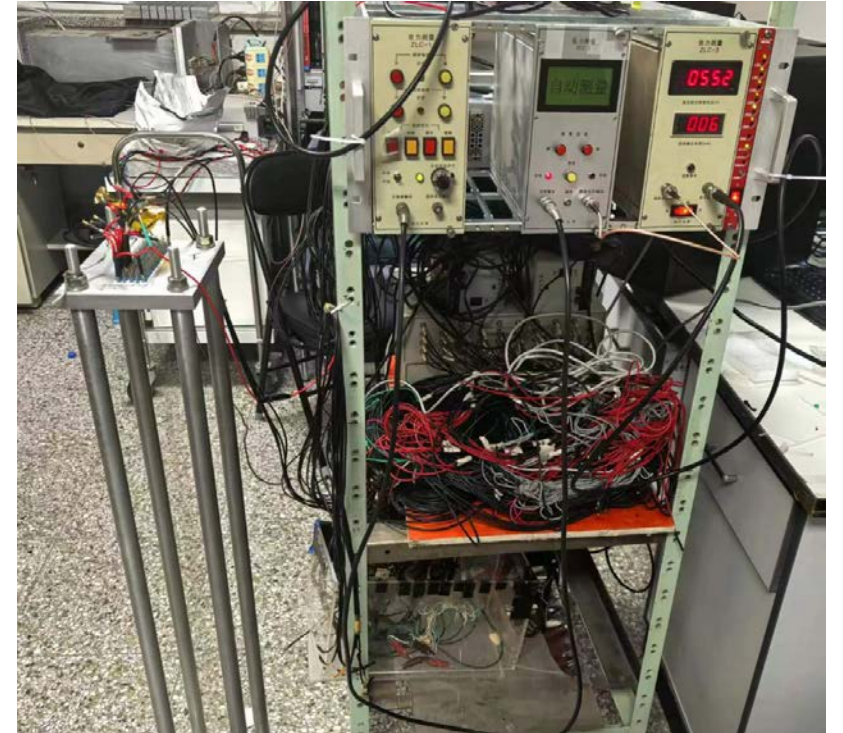
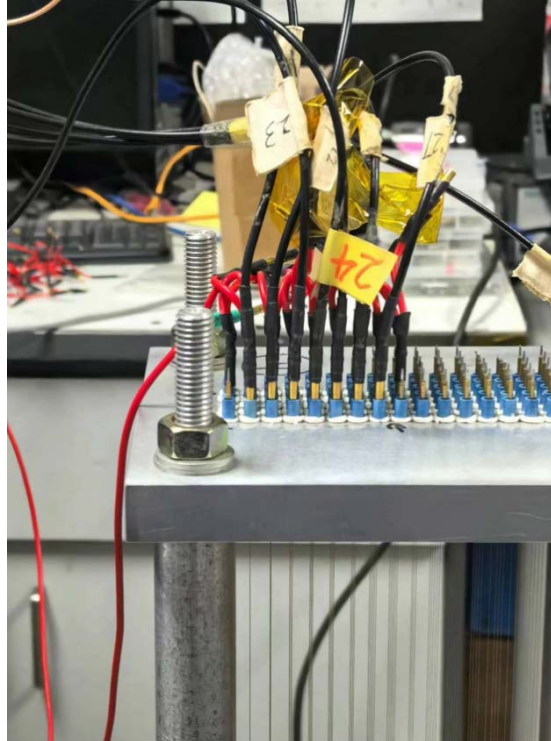
Preparation of installation of the support legs

- On August 20
 - Draw the center line for installing the support legs



Preparation of the wire tension system

- On August 24, 25
 - Tested the wire tension system with a drift chamber prototype



Tests of cooling and cutting the flange

- Have been finished successfully
- Details can be found in the review meeting
- Review of removal of the inner chamber (August 19th)

Review of extraction of the inner chamber

Monday Aug 19, 2024, 2:00 PM → 5:00 PM Asia/Shanghai

BESIII Meeting Room (IHEP)

[Description](#) [Zoom link](#)

2:00 PM → 2:10 PM Introduction

Speaker: Zheng Wang (IHEP)

2:10 PM → 2:50 PM Scheme and procedures for pulling out the inner chamber

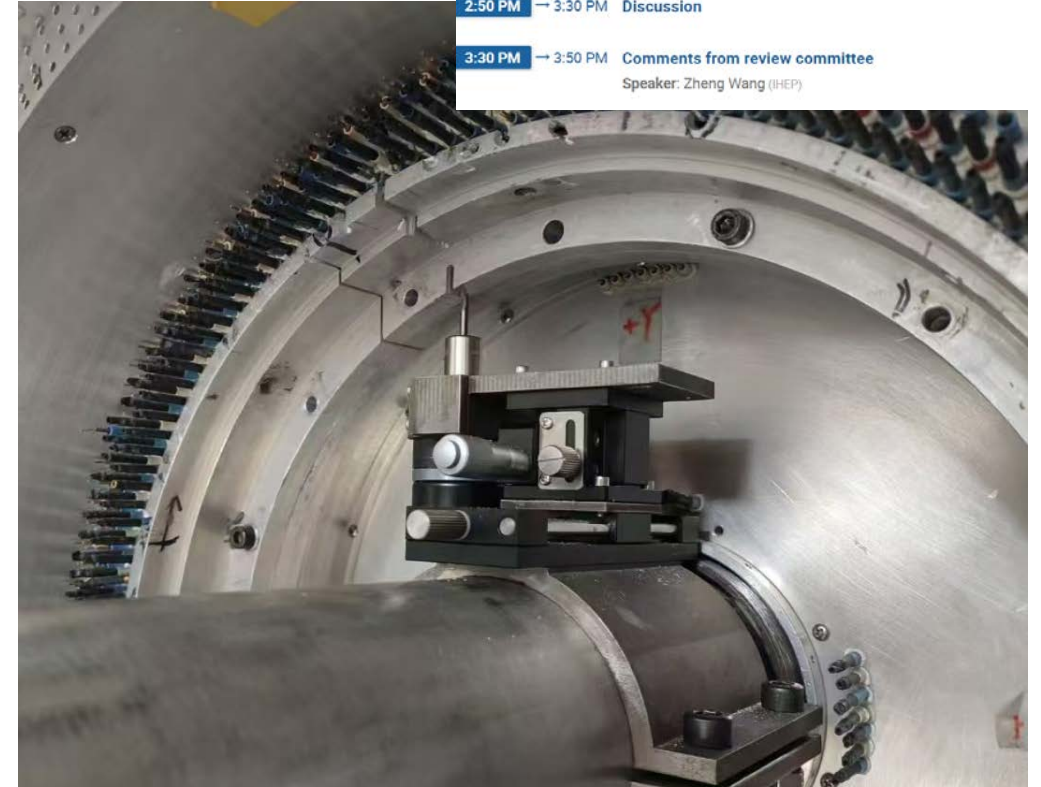
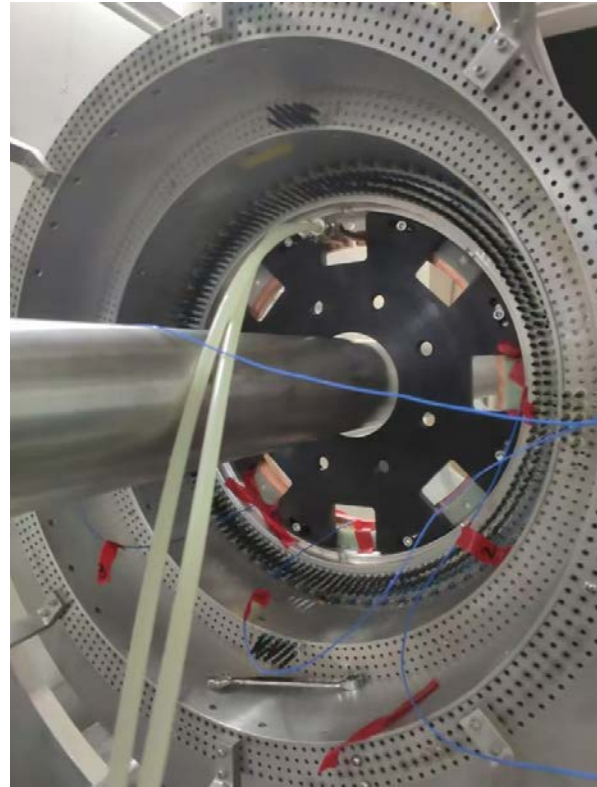
Speaker: Mingyi Dong (IHEP)

[Extraction scheme a...](#)

2:50 PM → 3:30 PM Discussion

3:30 PM → 3:50 PM Comments from review committee

Speaker: Zheng Wang (IHEP)



Plan for next week

	Tasks	Time needed (day)	person in charge
3	Wire tension check after glue cleaned	3	Mingyi Dong
4	Laser measurement of the original position of the MDC (step and outer parts)	3	Lingling Meng
5	Preparation of installation of the tools for inner MDC removal	2	Facilities Operation group (Jing Xiaoping)

Backup

Schedule (may be updated each week)

No.	tasks	Duration (day)	Start time and stop time	Sub-system involved
1	Removal of equipment of machine		July 1- Aug. 6	Utility, Small angle lum. Detector and ZDD, Beam pipe, slow control
2	Pull-out of EEMC			Utility, EMC, TOF, MDC, MUC
3	Removal of inner chamber (Operate simultaneously on both sides)	51	Aug. 7- Sep.7 Sep.8- Sep. 28	MDC, MDC electronics, Gas, Mechanics, Laser Alignment group, Trigger, DAQ, Slow control
4	Installation of CGEM	44	Sep.29- Nov. 11	CGEM group, MDC, MDC electronics, Gas, Mechanics, Laser Alignment group, Trigger, DAQ, Slow control
5	Recover EEMC		Nov. 12-Dec.30	Utility, EMC, TOF, MDC, MUC
6	Recover equipment of machine			Utility, Small angle lum. Detector, ZDD, Beam pipe, slow control,
total		180 days	July 1- Dec.30	

Key tasks before extraction of iMDC and installation of CGEM

- CGEM Mock-up insertion test (Done, successful)
- Laser alignment preparation
- Extraction of the inner MDC is considered to be the most critical point.
Continue inner chamber extraction test
 - Preliminary discussion on cooling the connecting flange
- Continue CGEM cosmic-ray test to gain more experience with the full detector
- CGEM integrated and tested with BESIII DAQ, trigger, and slow control