

CEPC Jet&Samples

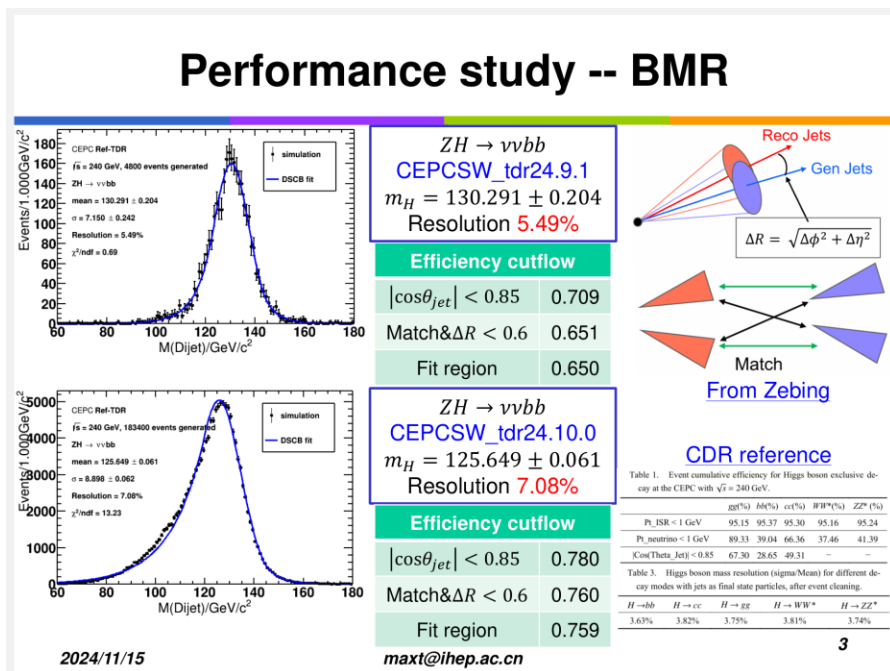
Kaili Zhang

IHEP

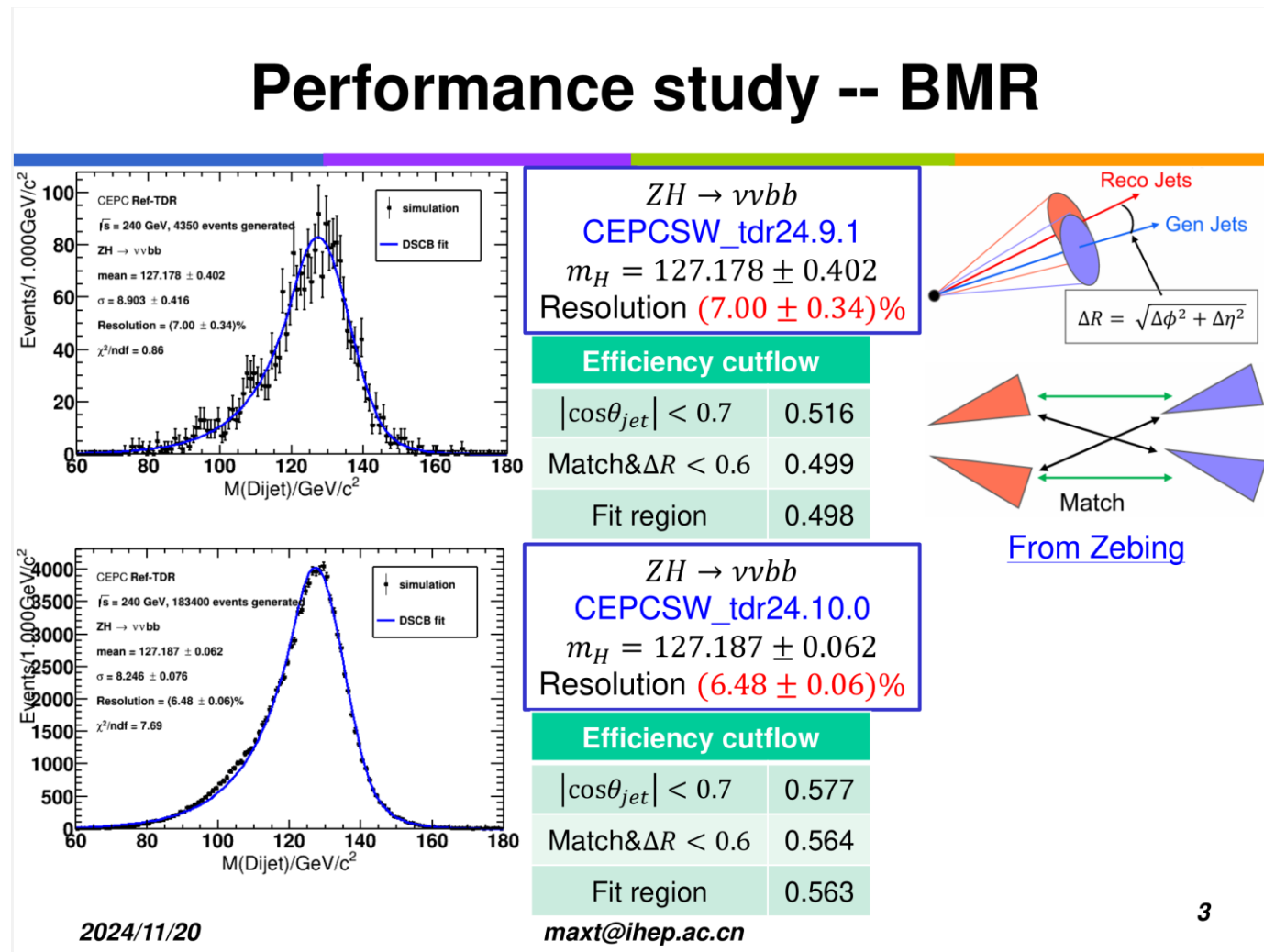
zhangkl@ihep.ac.cn

Flavor discrepancy

Xiaotian here used the wrong 24.9 sample.

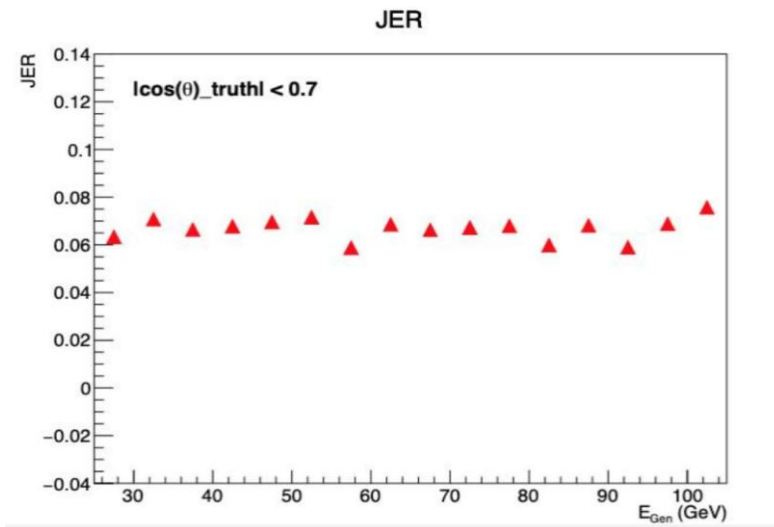


bb with more neutrinos, more energy loss, more long tails, and different JER behavior compared to other flavors.



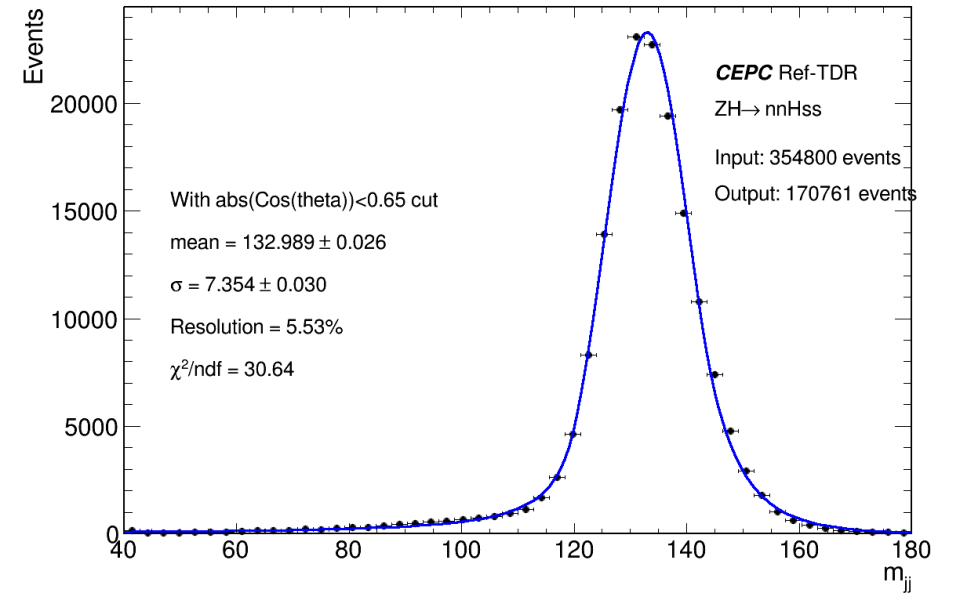
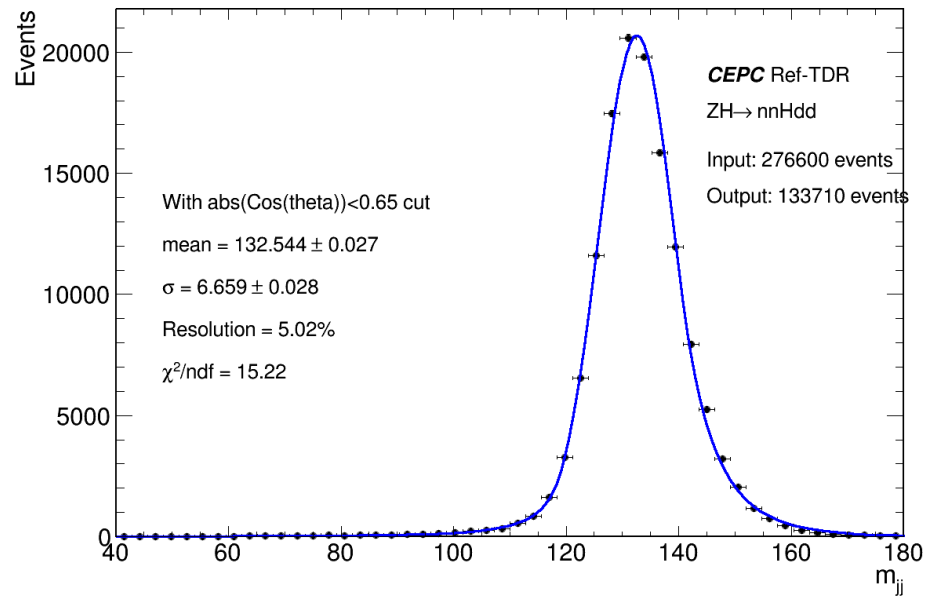
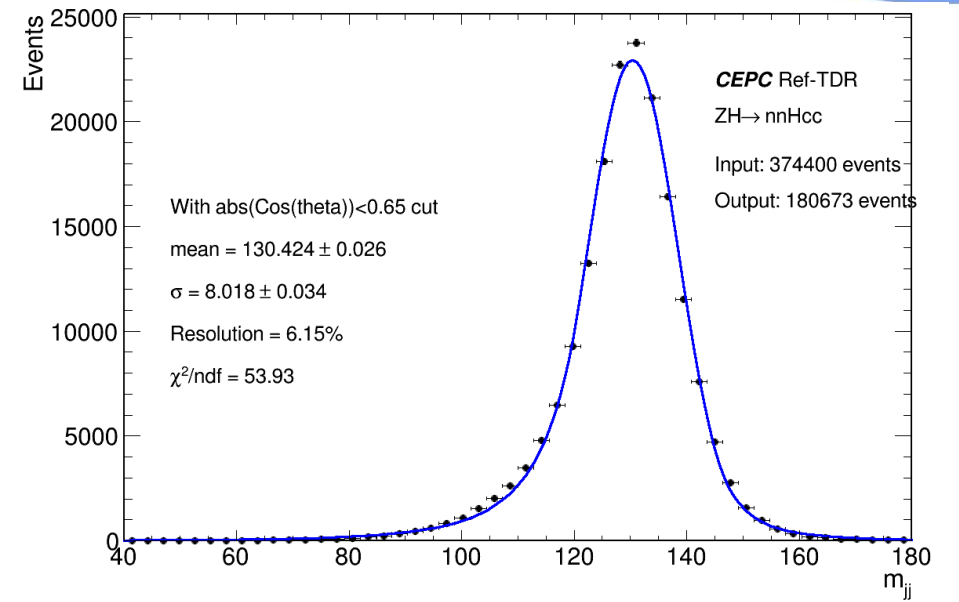
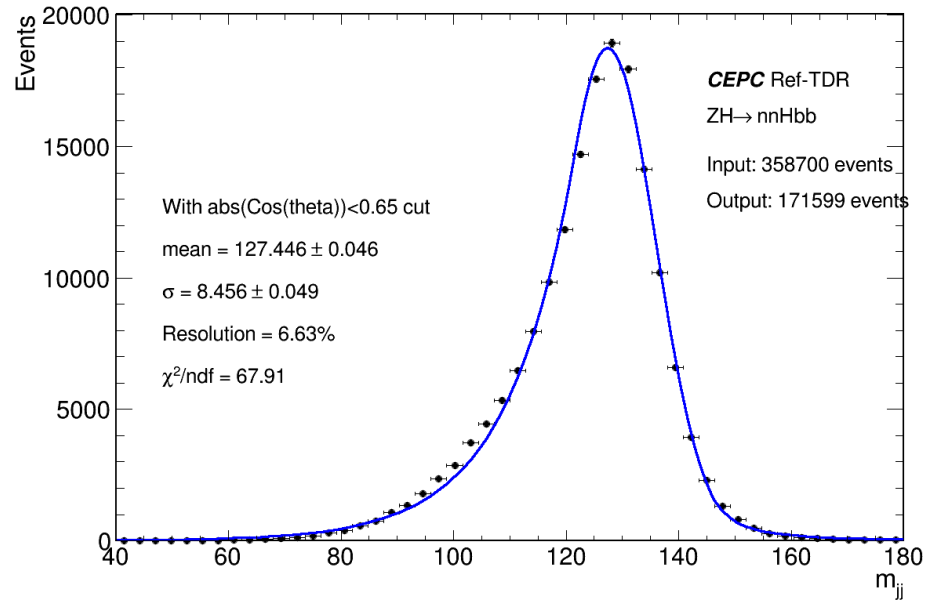
Correlated jet/photon performance

- To locate the problem, please try to draw the differential plot like Yingqi did.
- For y axis: Energy/Angular Scale/Resolution
- For x axis: E/Pt/Costheta/phi.....
- For sample: different flavor/type.....



For convention, we encourage to use $|\cos_{\text{theta_truth}}| < 0.7$ in selection.

Jet with flavor



Samples

- Samples under /cefs/higgs/zhangkl/Production
 - ~40k for each.
 - ~400k for vvHbb/cc/gg/uu/dd/ss.
 - Under tdr 24.10.0.
 - Endcap Calo still missing.
 - Let me know if further requirement.

```
E240_2f_ll  
E240_2f_qq  
E240_4f_ww_h  
E240_eeHbb  
E240_eeHcc  
E240_eeHdd  
E240_eeHgg  
E240_eeHinclusive  
E240_eeHss  
E240_mmHbb  
E240_mmHcc  
E240_mmHdd  
E240_mmHgg  
E240_mmHinclusive  
E240_mmHss  
E240_nnHbb  
E240_nnHbb_1101  
E240_nnHbb_1105  
E240_nnHbb_1105v2  
E240_nnHcc  
E240_nnHdd  
E240_nnHddv2  
E240_nnHgg  
E240_nnHinclusive  
E240_nnHss  
E240_nnHtautau  
E240_nnHuu  
E240_nnHyy  
E240_qqHbb  
E240_qqHinclusive  
E240_qqHmm
```