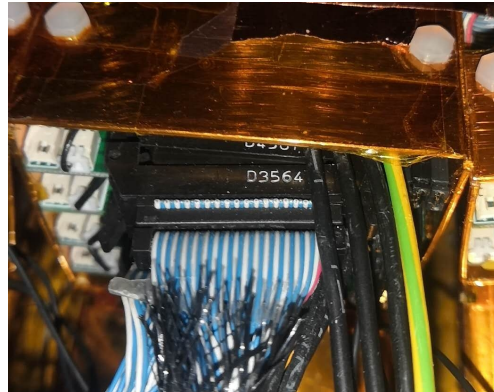
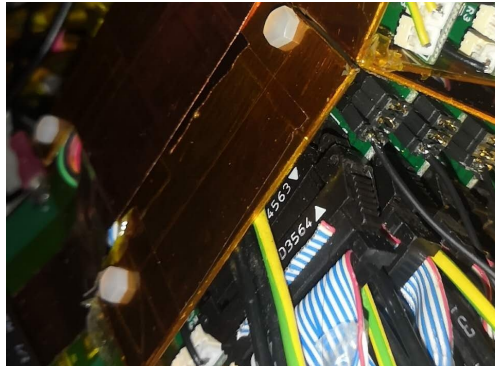


Status of CGEM

Status

- Thanks for the movement of the cables, all the operation were done as smooth as possible
- As reported last week, few TIGERs had smaller issues after the operation
 - But quickly recovered by Damiano with the help of ChenLong, since some long haul cables were unplugged

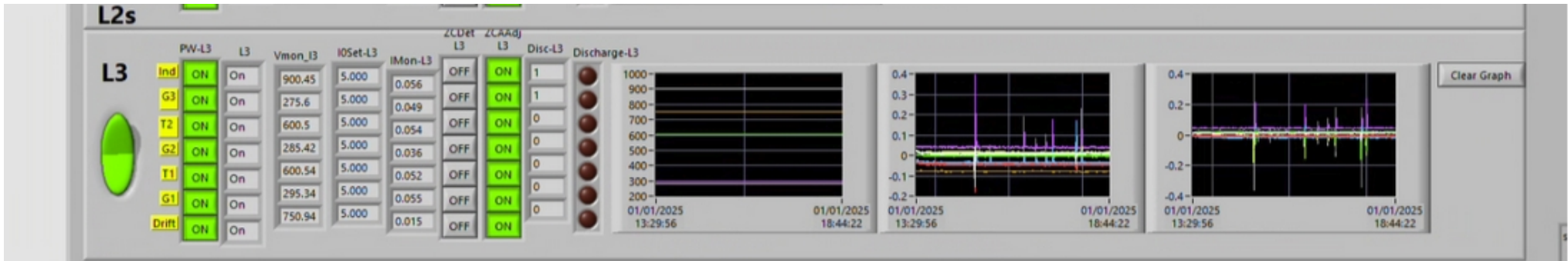


On east side

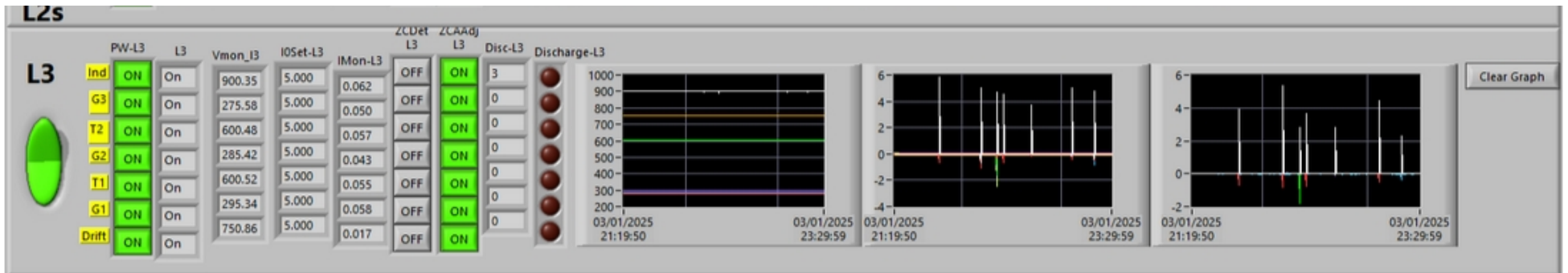
- EM shielding have been prepared, but not installed yet
- Two concerns remains for CGEM before closing on Jan 9

Discharges on L3

This was the situation on Jan 1

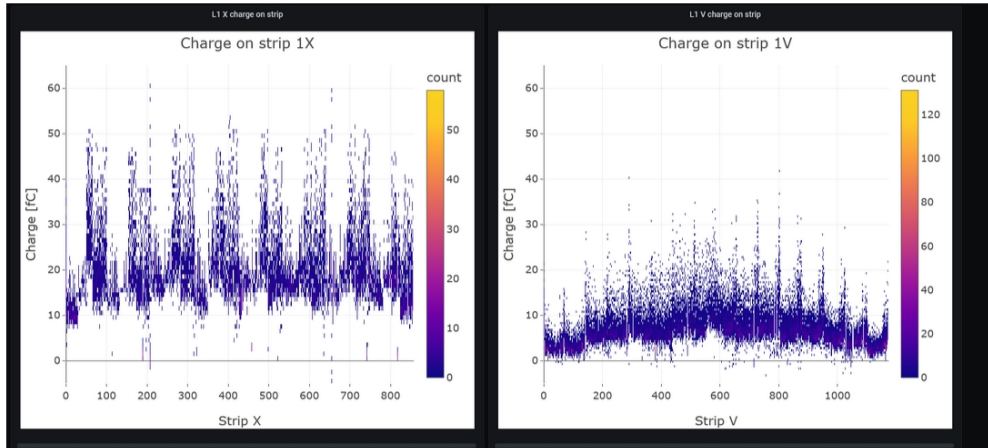


Several large discharges per hour started from Jan 3 on L3 induction.

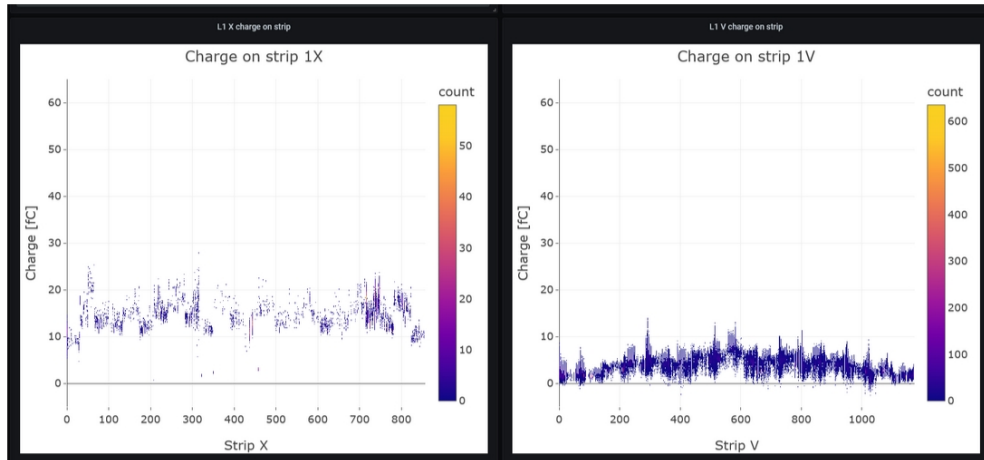


This will not cause HV TRIP but most likely DAQ will stop. Investigation on going

Noise on L1 east side



Starting from Dec 30, first run after the operations, we see some huge activity band on L1 east side with the detector off.



This was the situation on Dec 22, after all the cabling has been completed by the italian team.

Threshold applied are more or less the same, and noise tools give no structures.

Is there some noise source active on East side and not on the West side?