

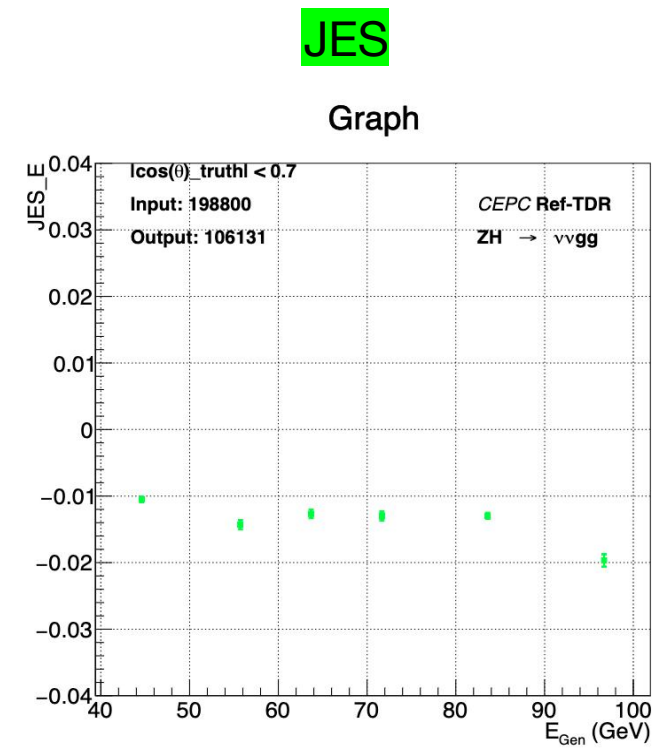
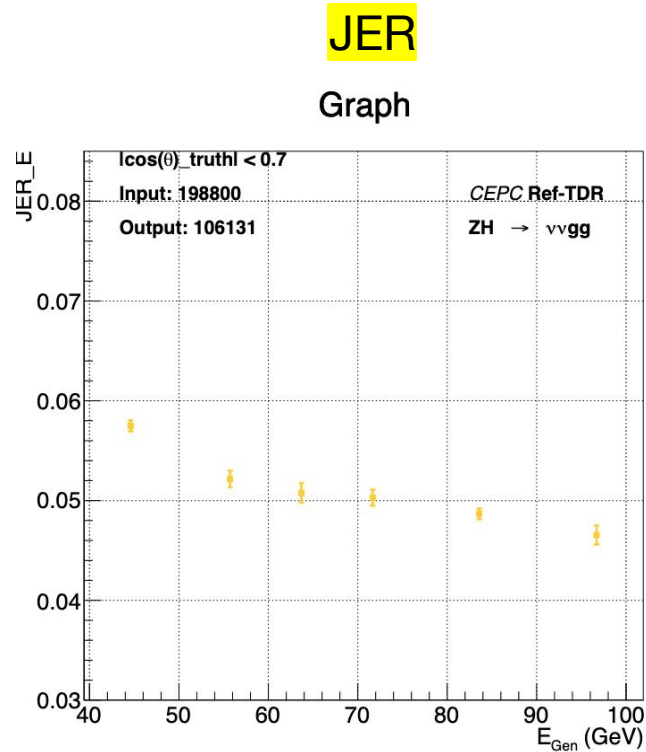
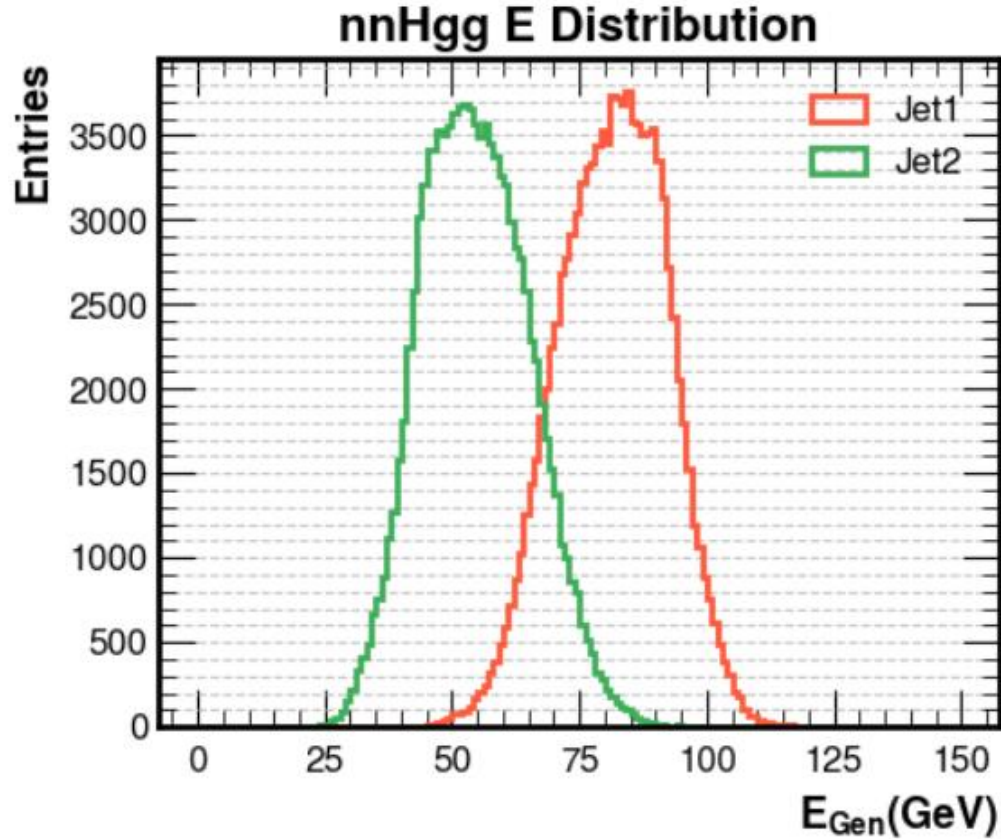
JES/JER

Hou Yingqi

2025/1/15

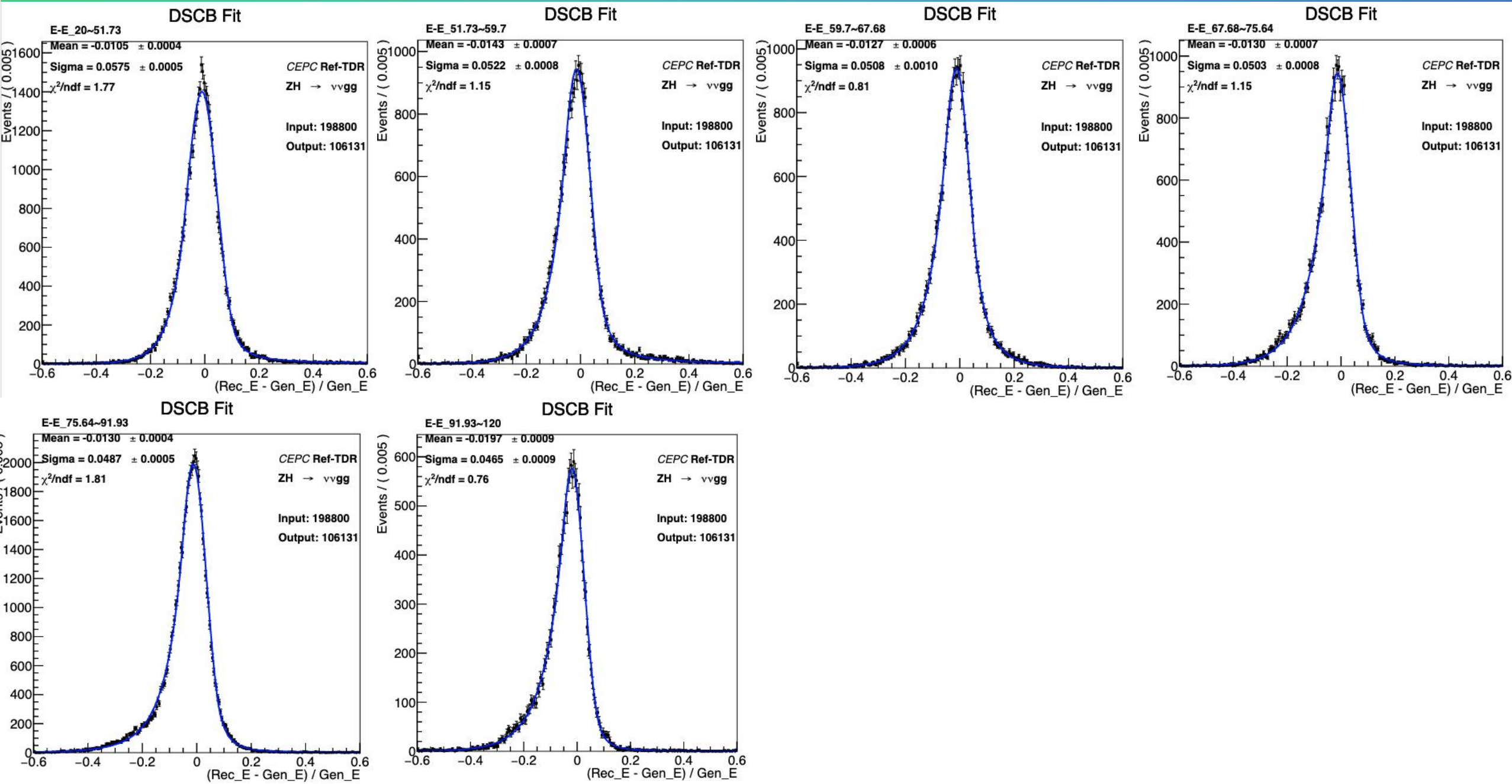
nnHgg jet energy distribution

✓ $\cos\theta_{\text{truth}} < 0.7$



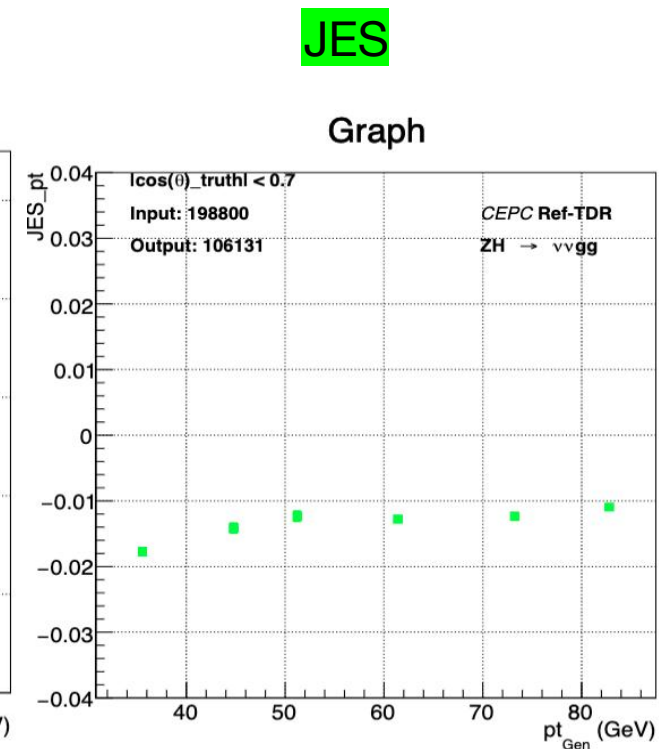
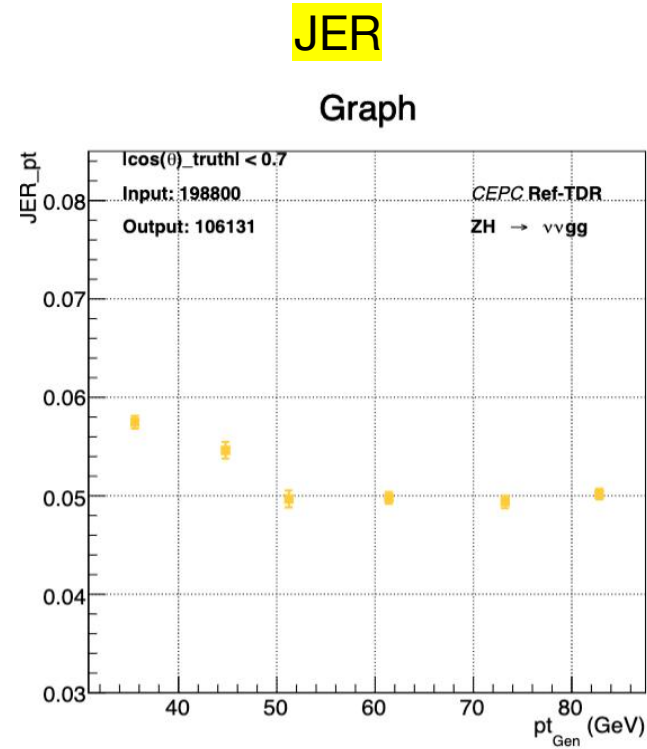
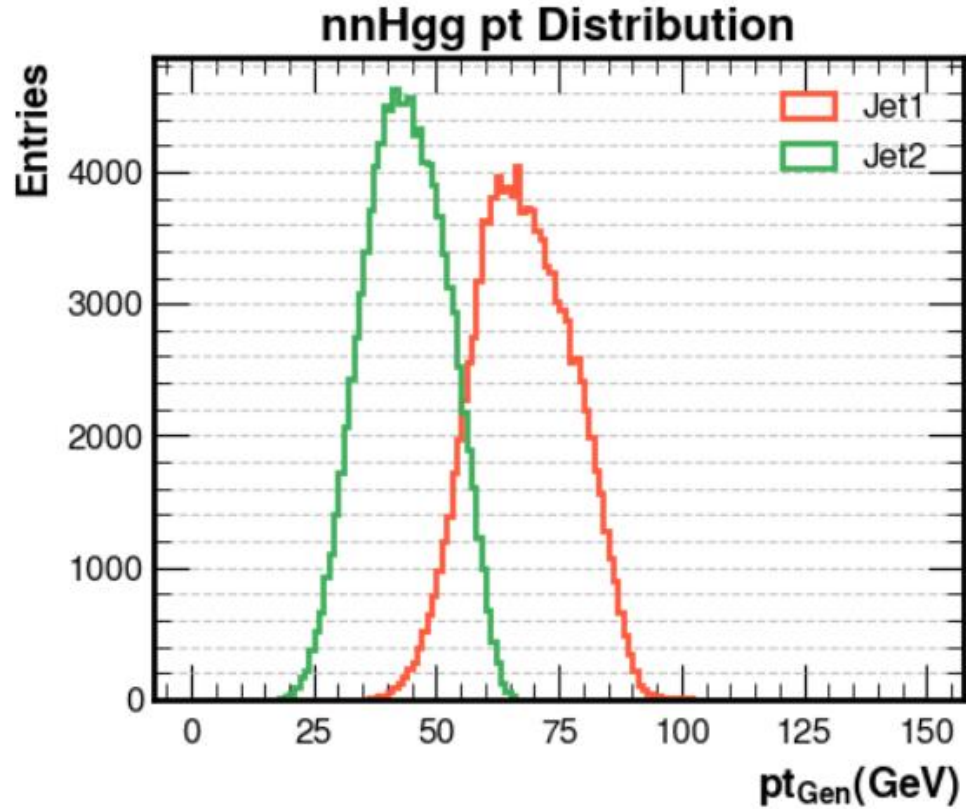
- Each point is at the mean of over that period.

fit result

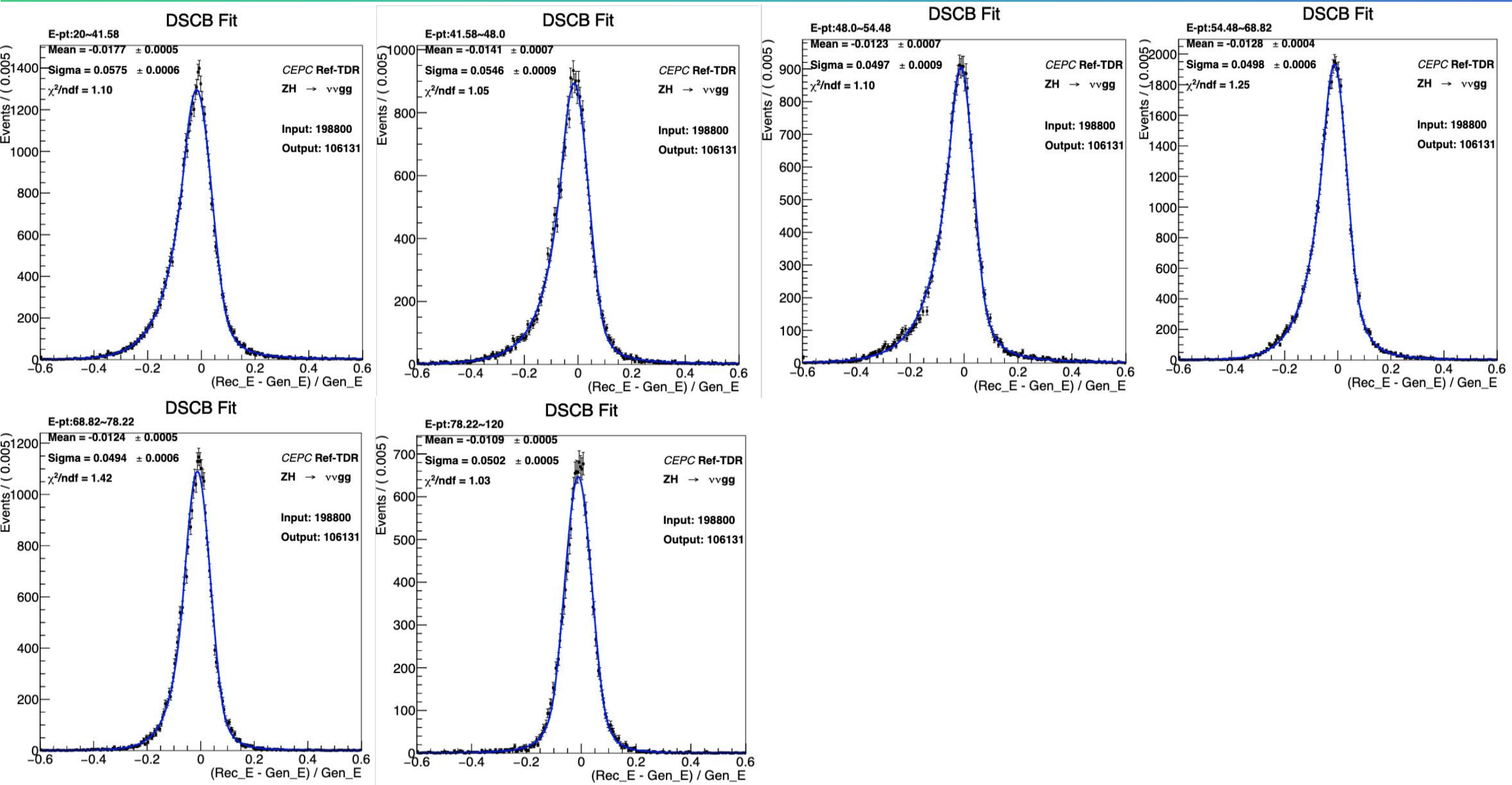


nnHgg jet pt distribution

✓ $\text{costheta_truth} < 0.7$



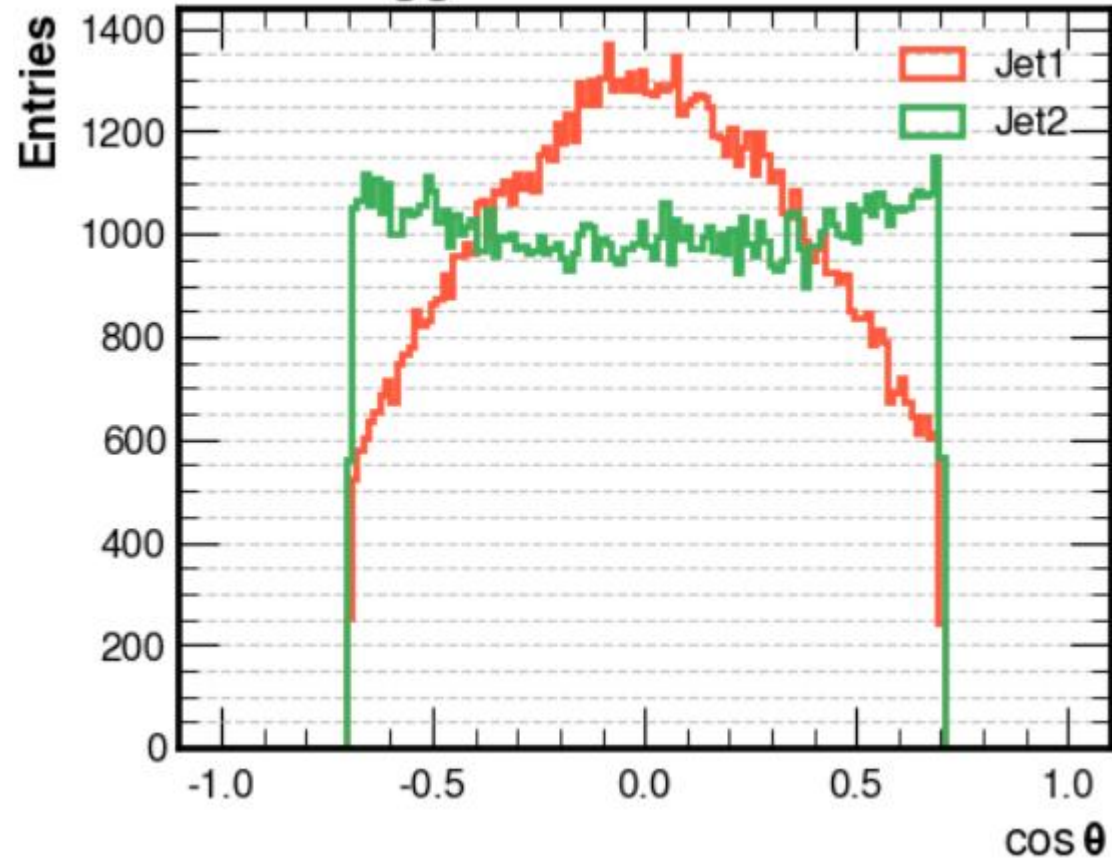
fit result



nnHgg jet costheta distribution

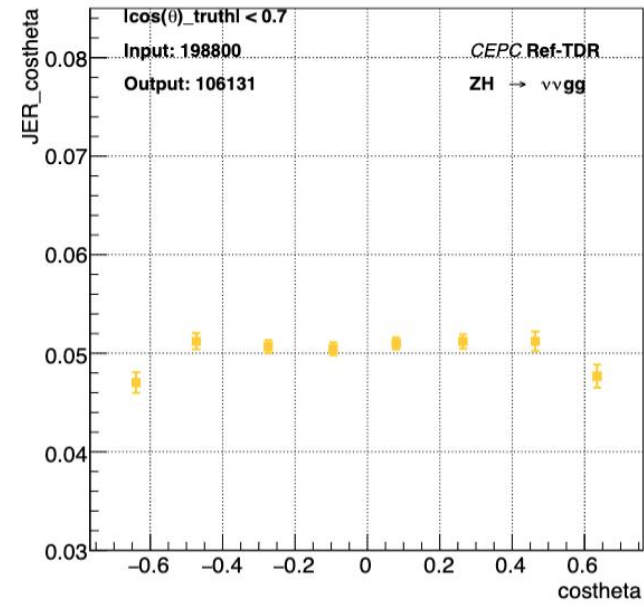
✓ $\text{costheta_truth} < 0.7$

nnHgg costheta Distribution



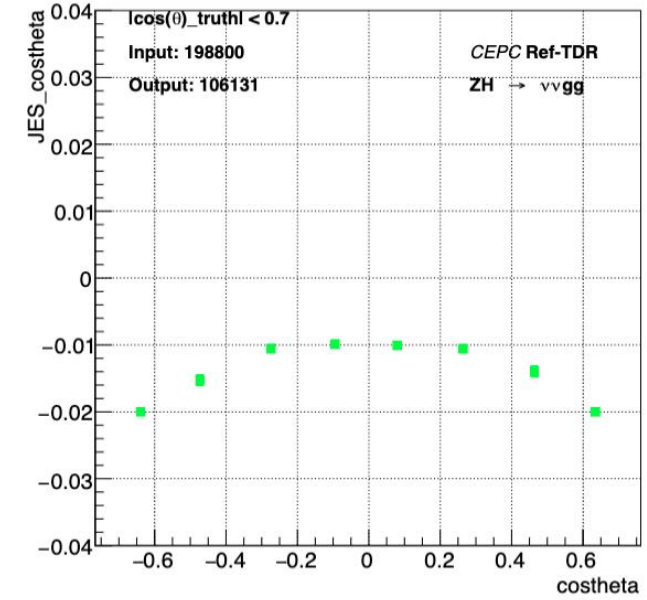
JER

Graph

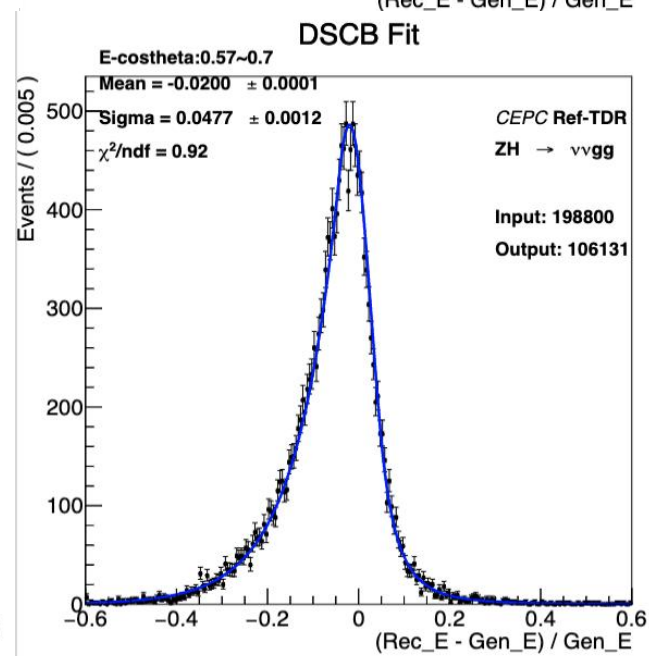
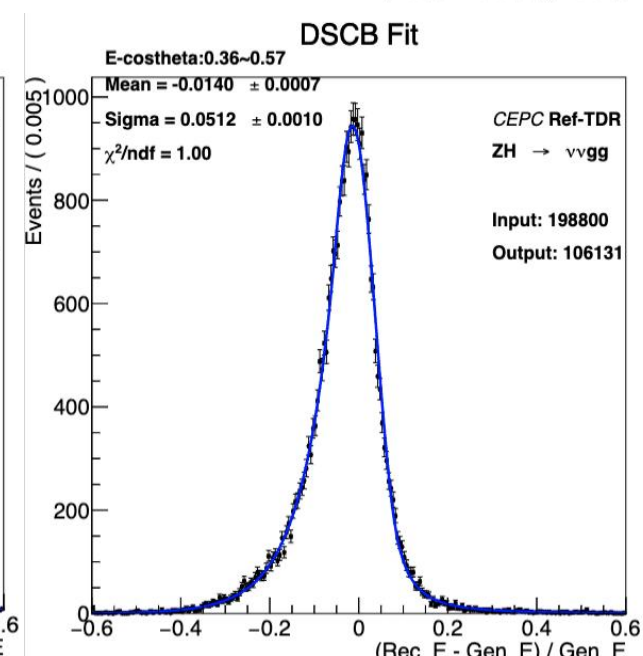
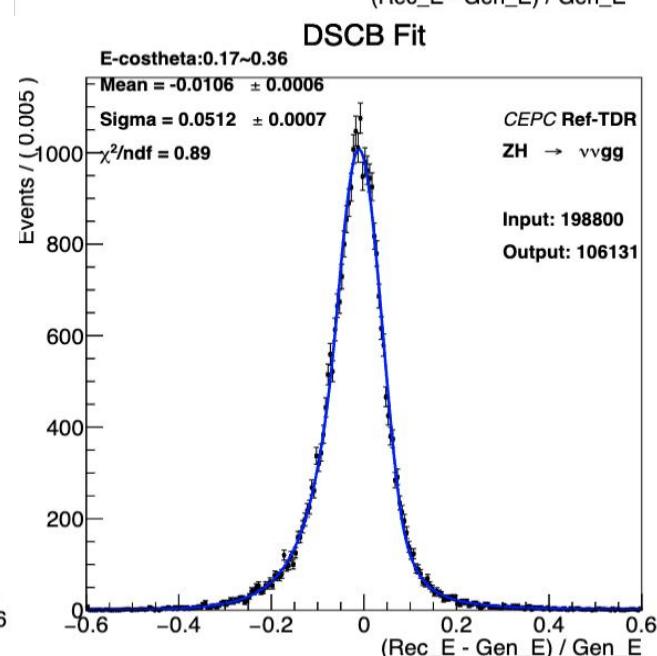
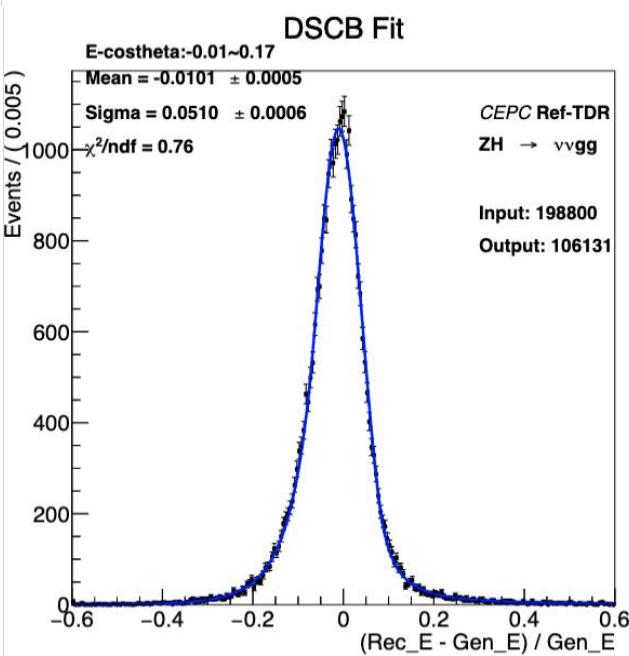
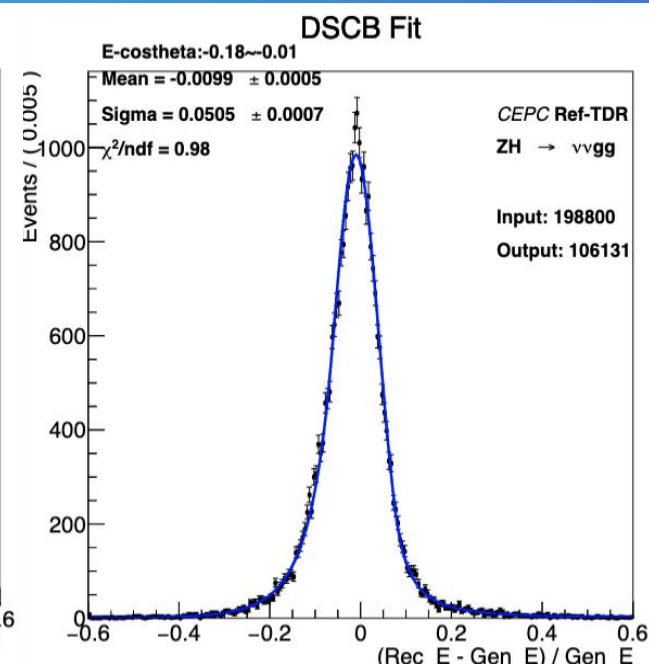
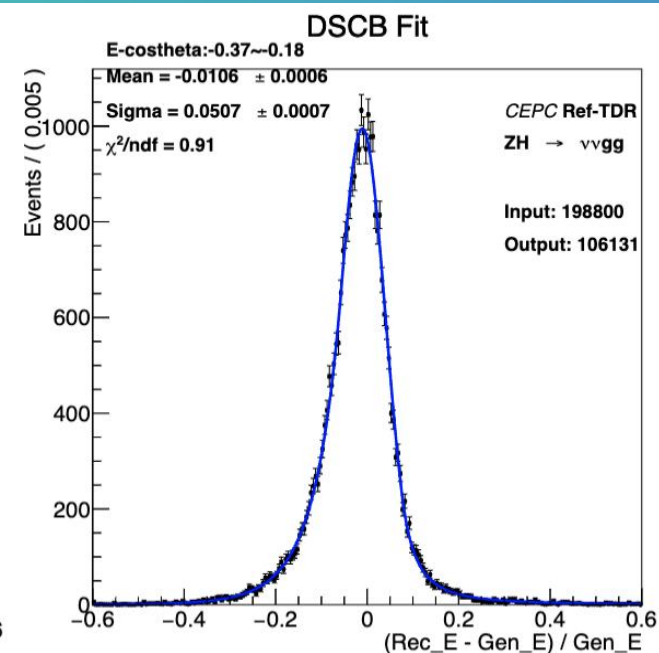
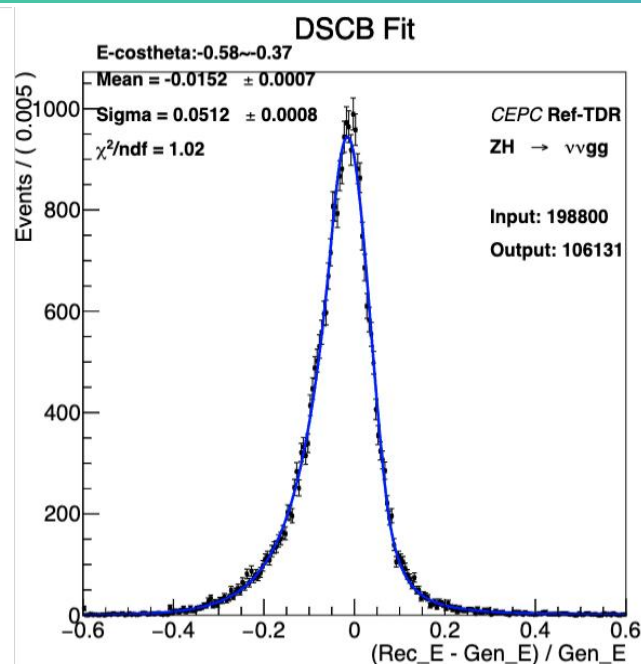
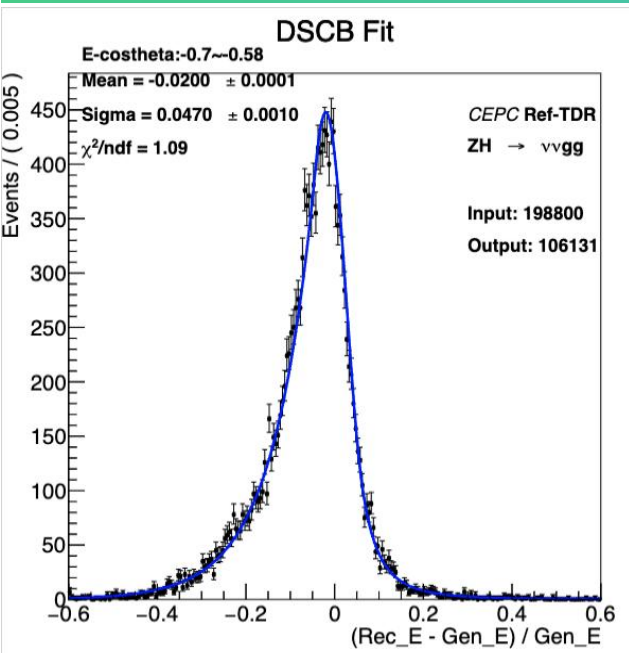


JES

Graph



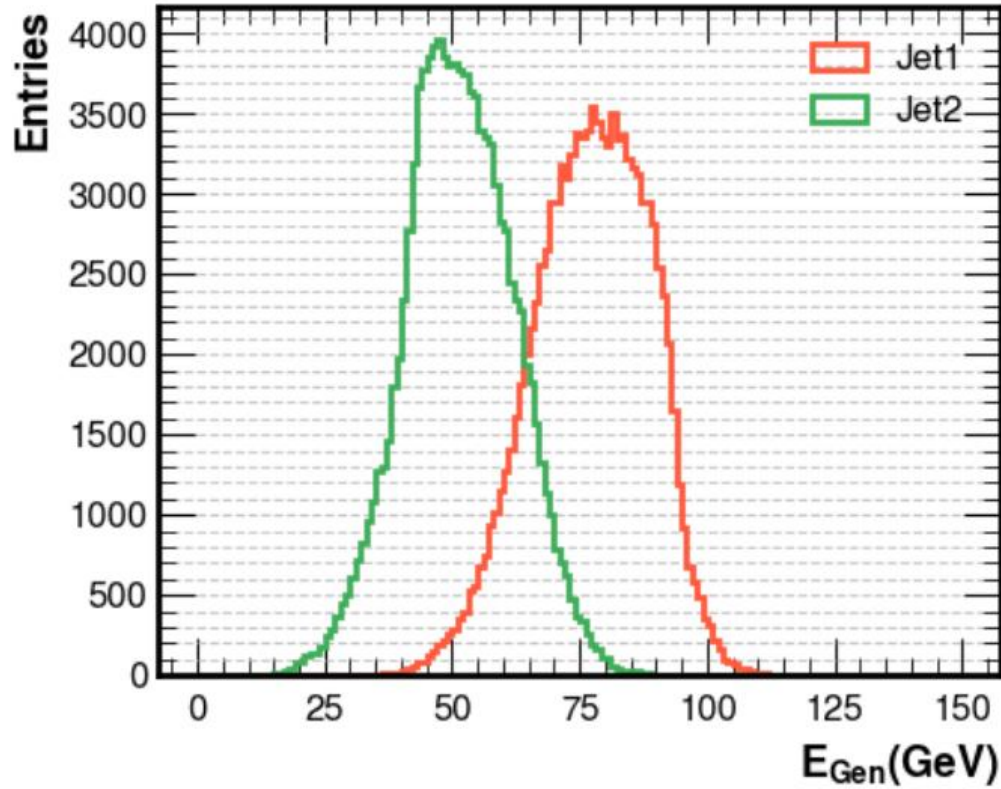
fit result



nnHbb jet energy distribution

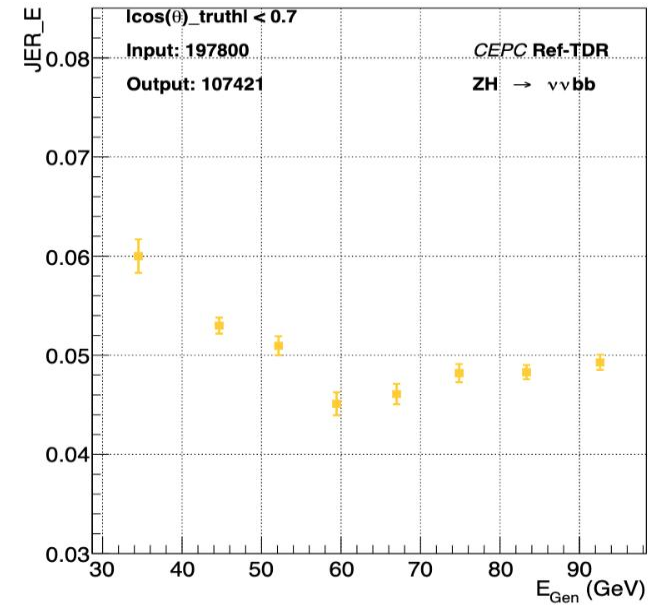
✓ $\cos\theta_{\text{truth}} < 0.7$

nnHbb E Distribution



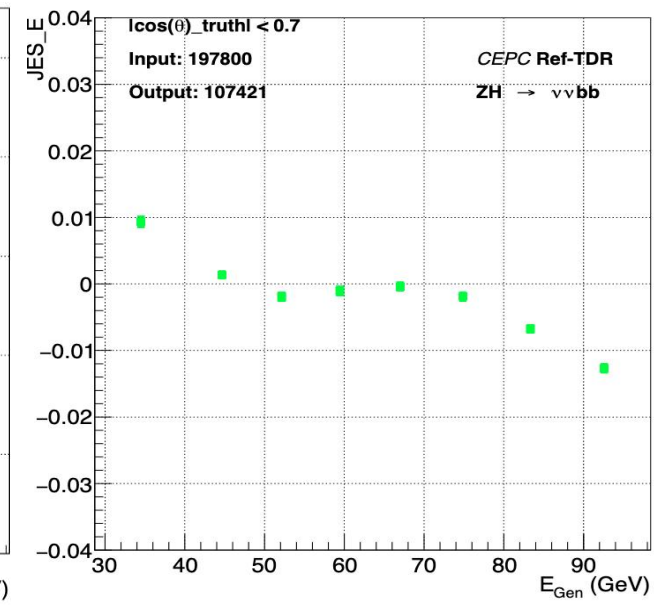
JER

Graph

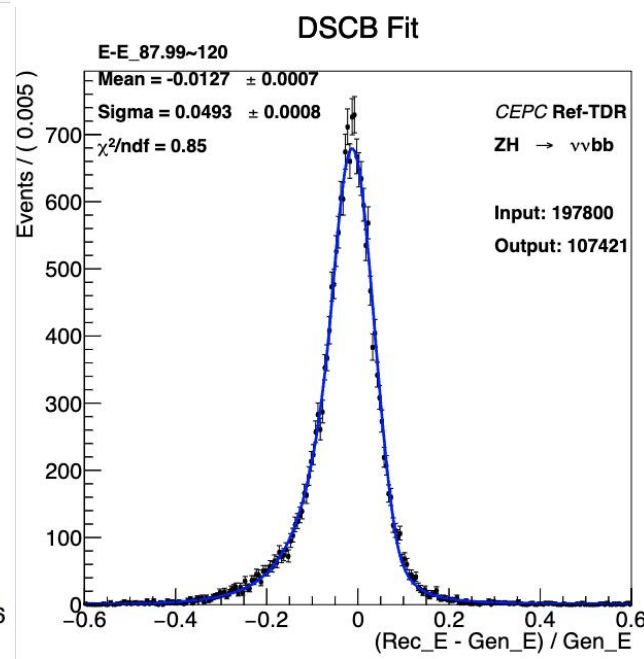
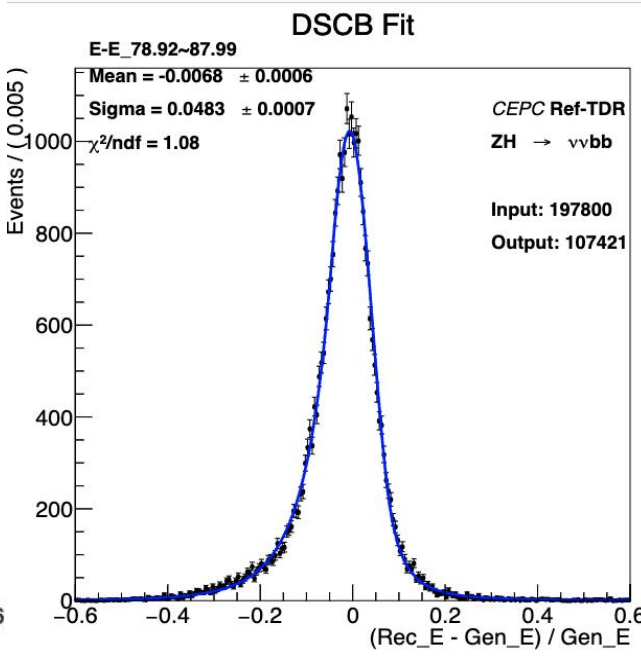
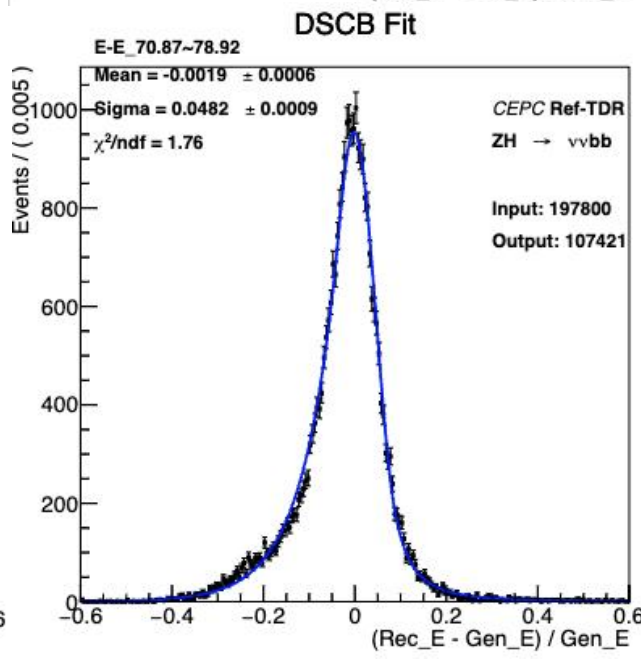
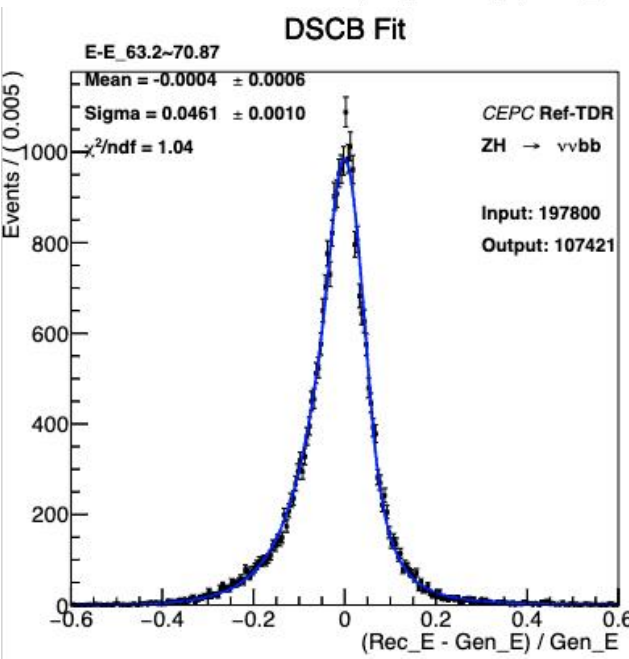
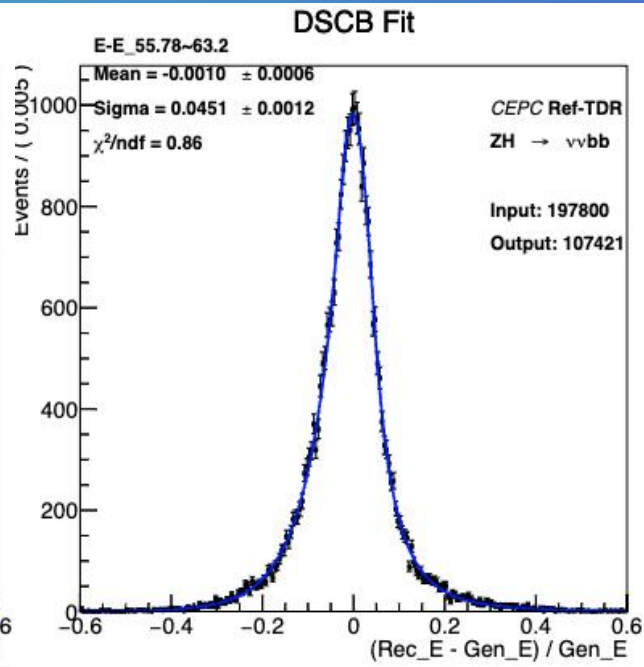
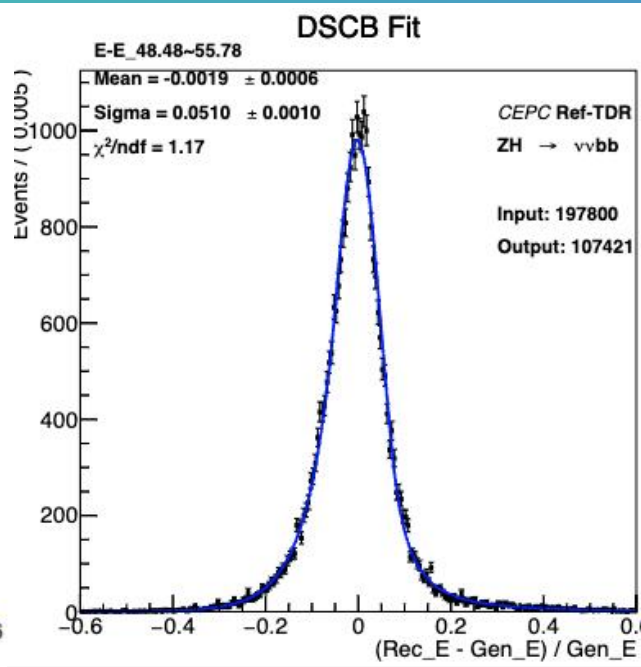
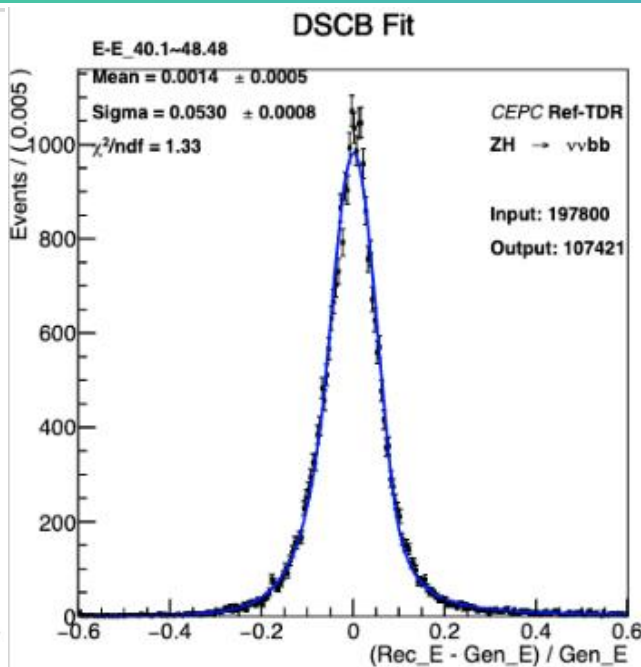
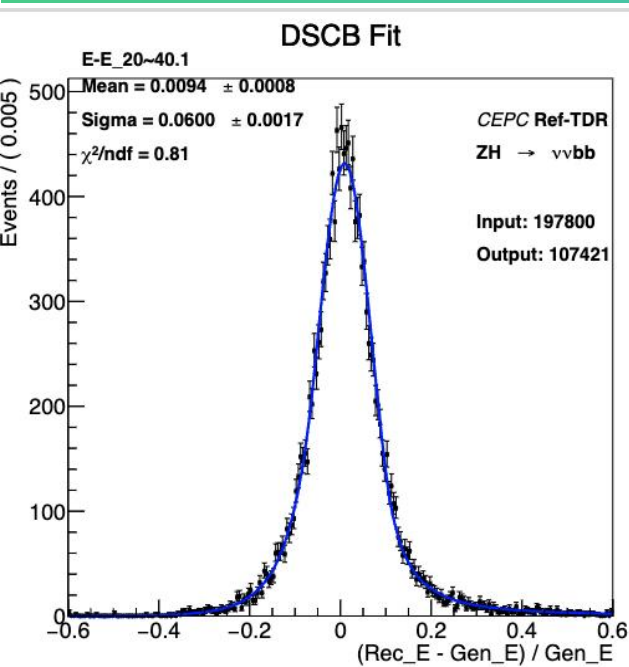


JES

Graph

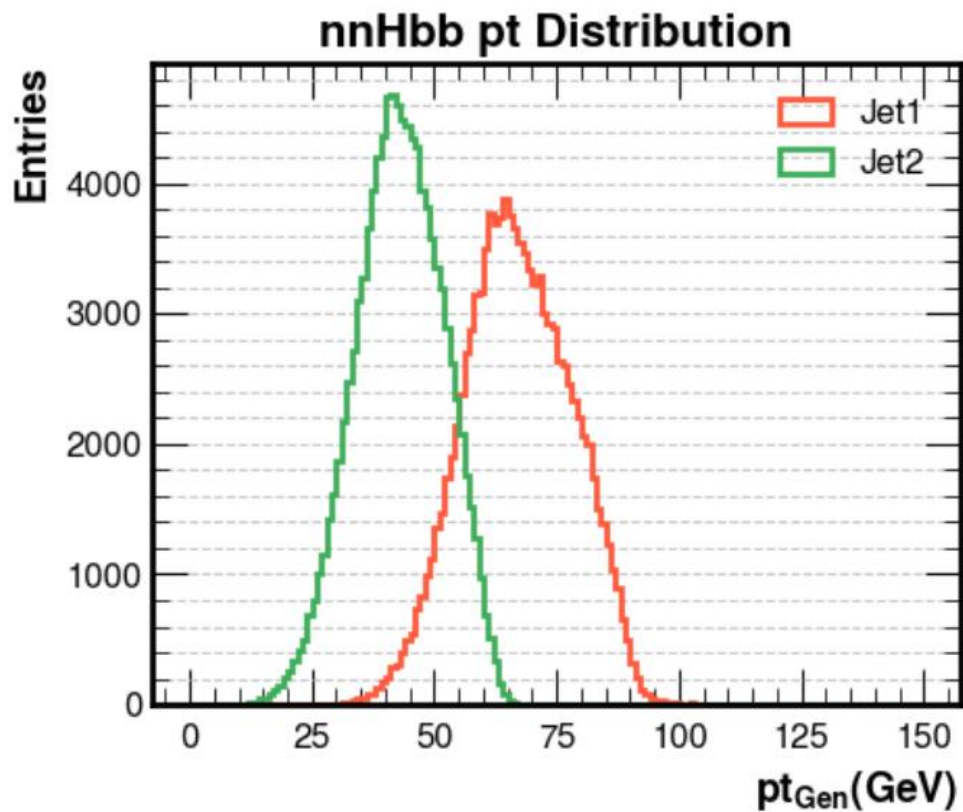


fit result



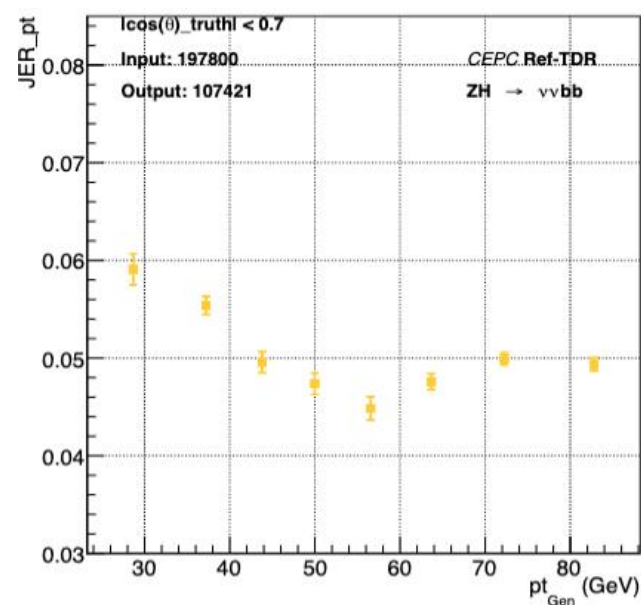
nnHbb jet pt distribution

✓ $\text{costheta_truth} < 0.7$



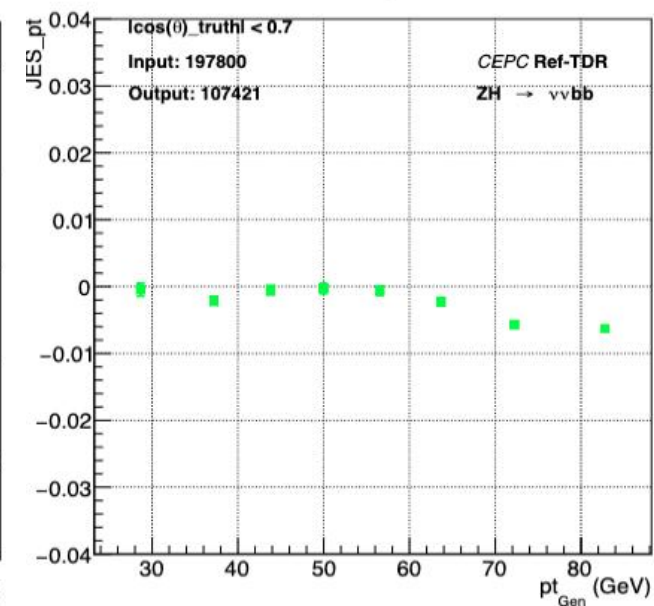
JER

Graph

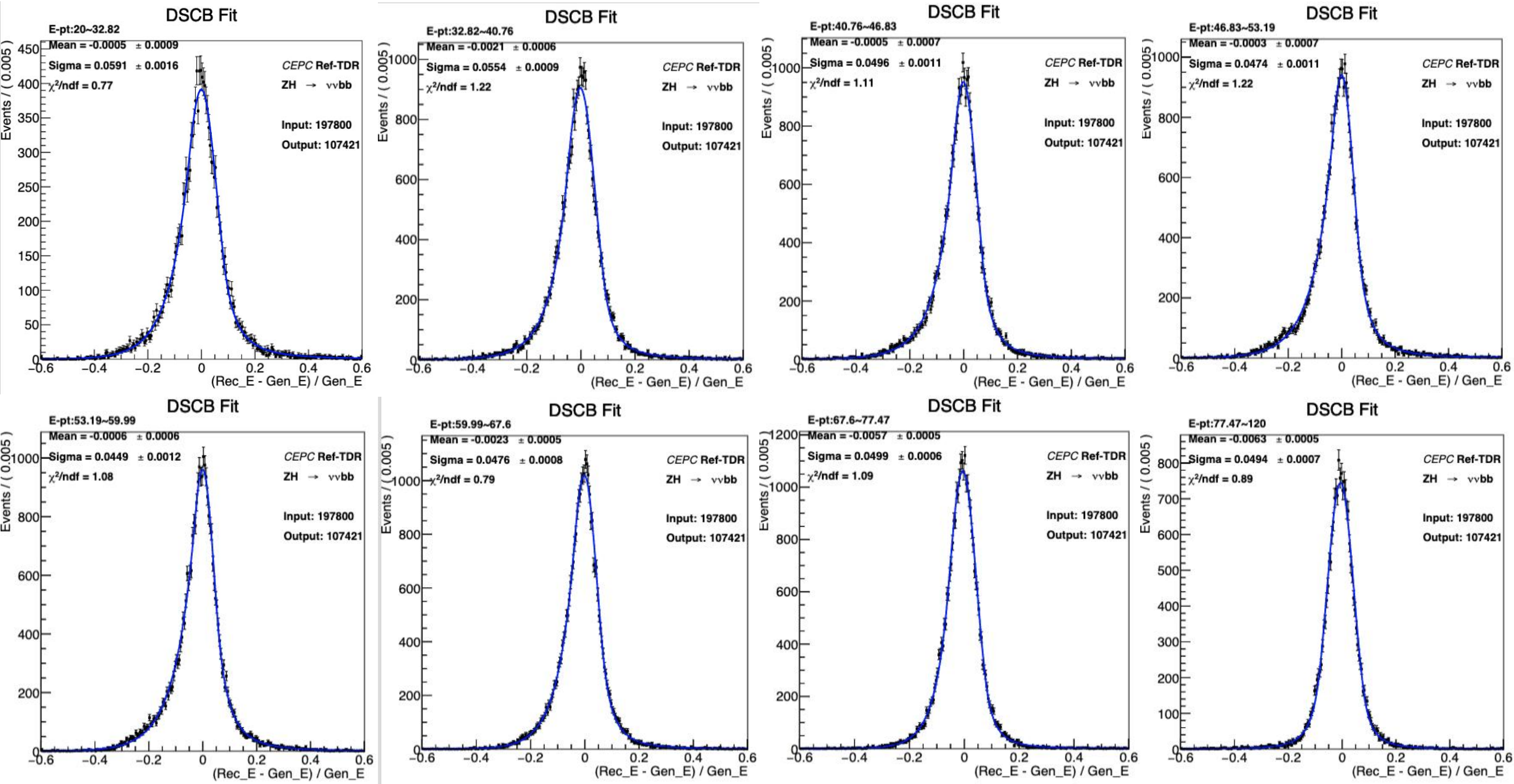


JES

Graph

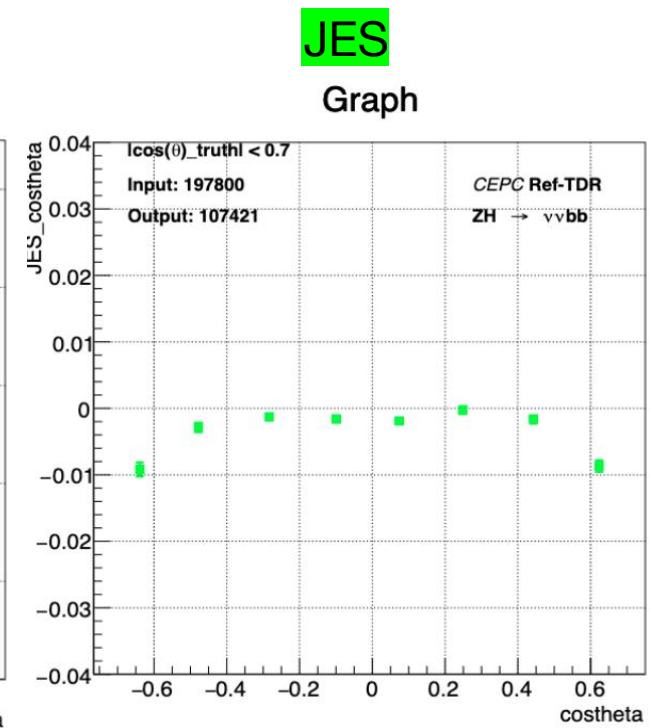
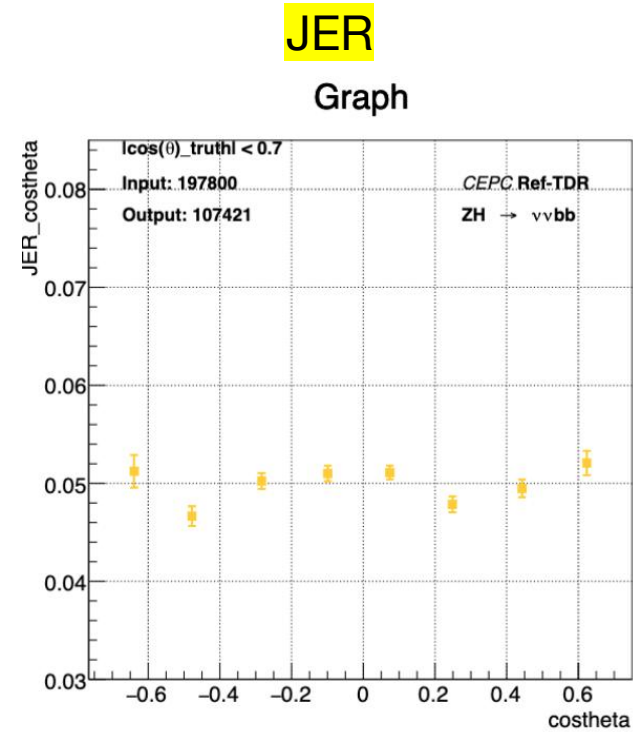
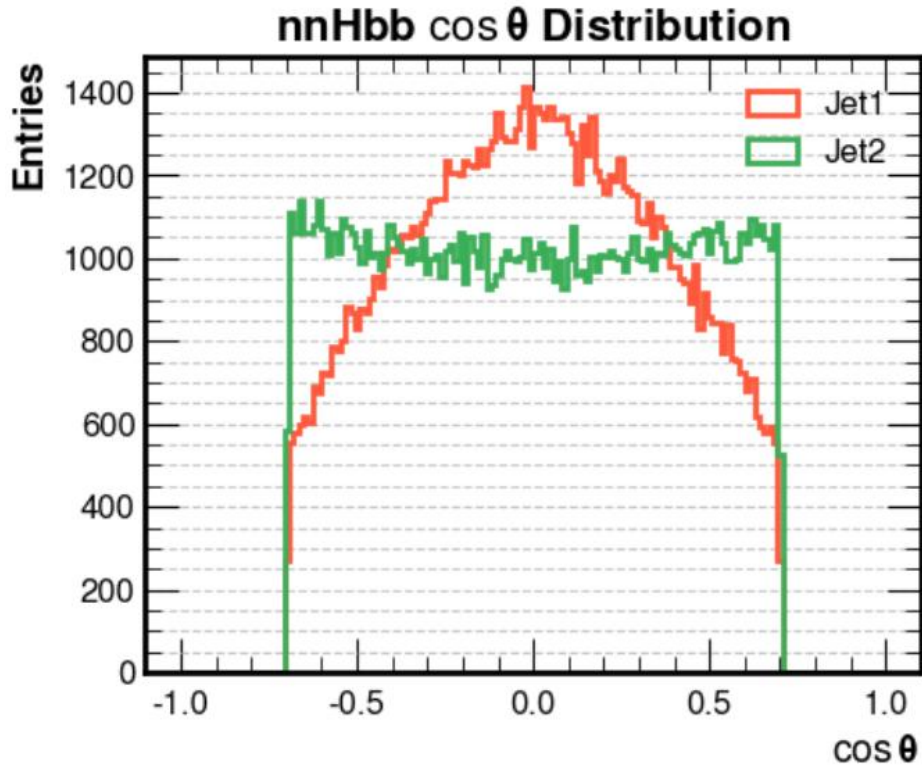


fit result



nnHbb jet costheta distribution

✓ costheta_truth < 0.7



fit result

