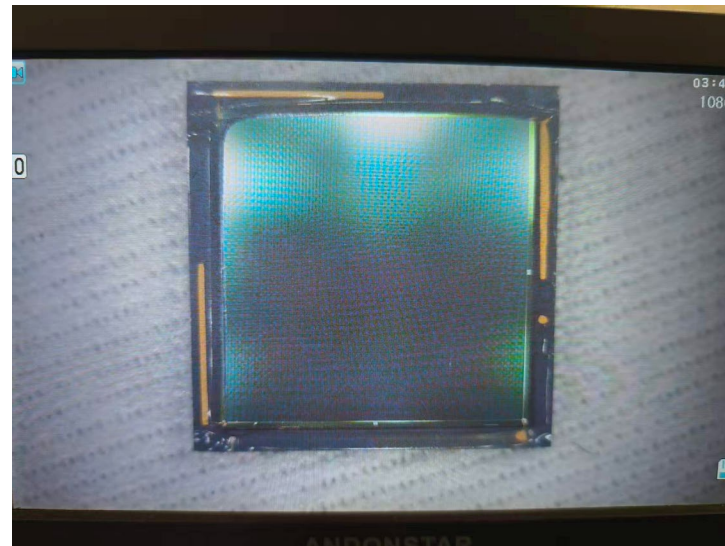
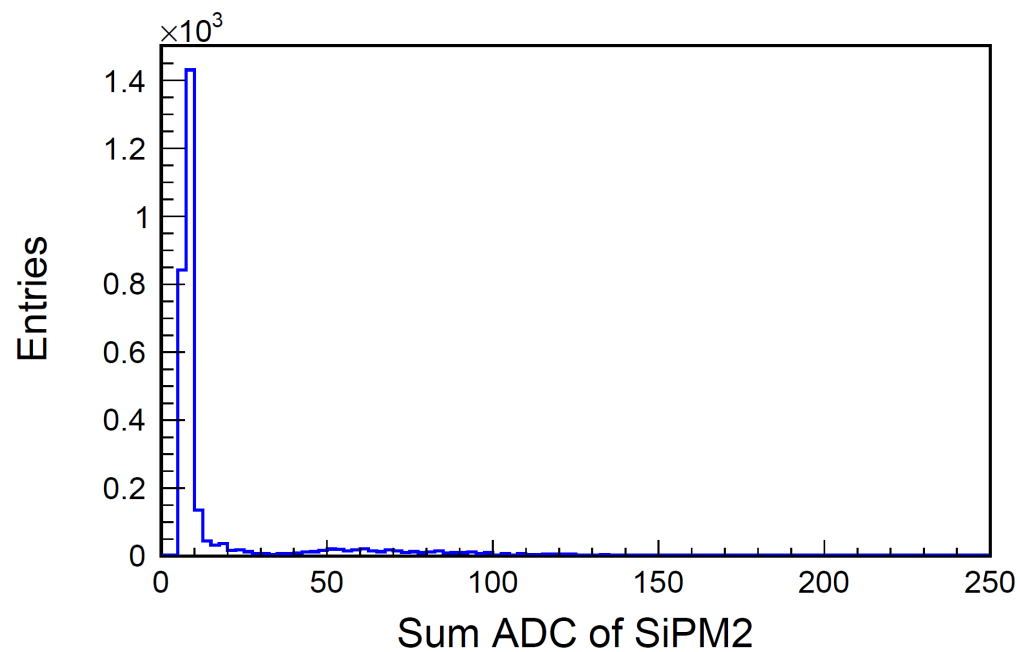
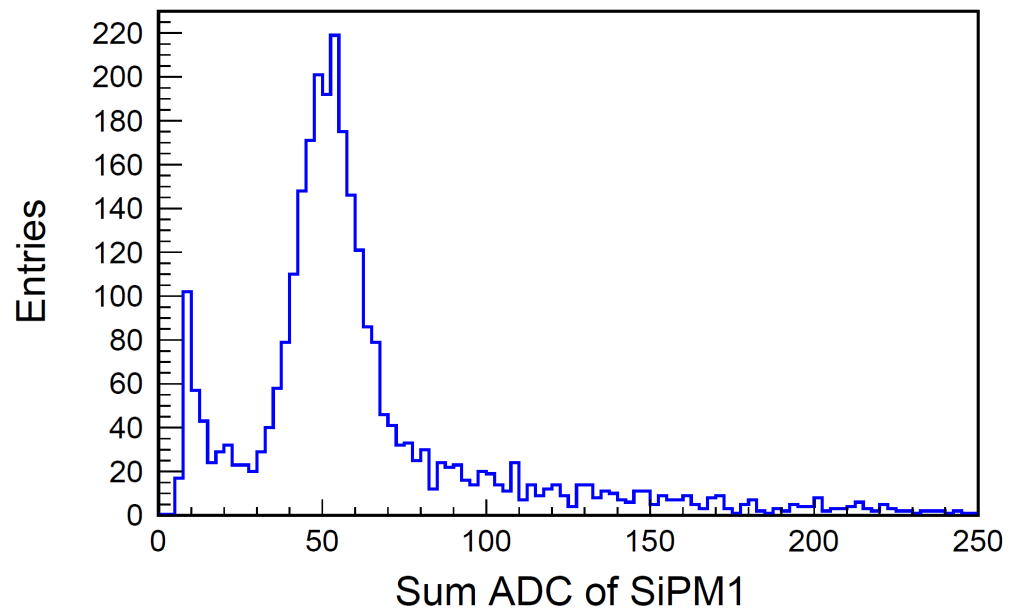


Group Meeting

邹世明

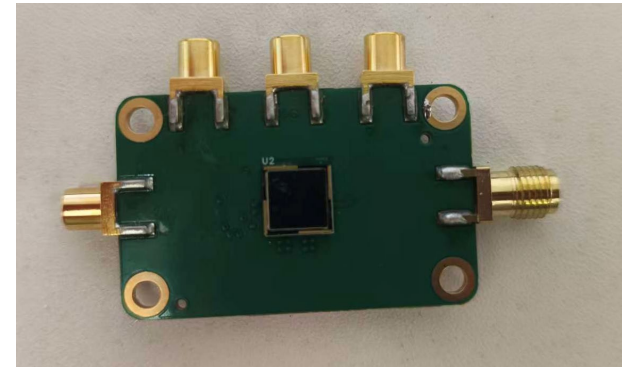
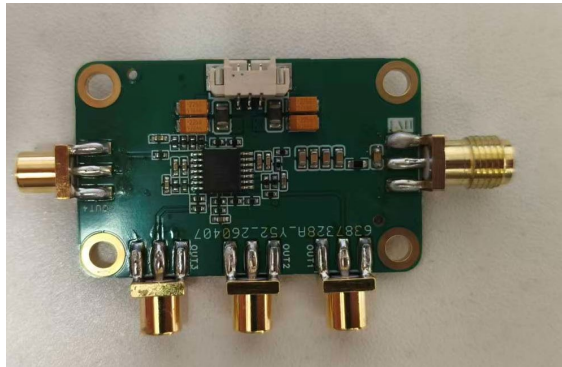
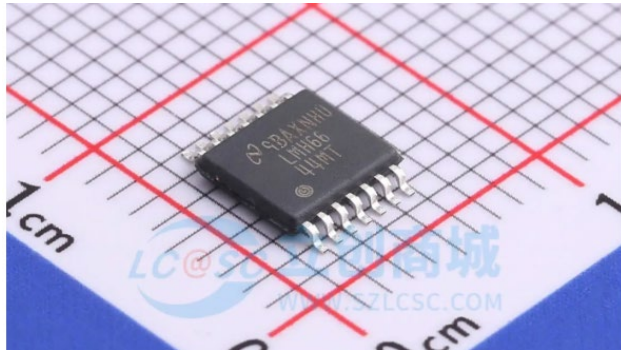
2026/04/24

PSS issue

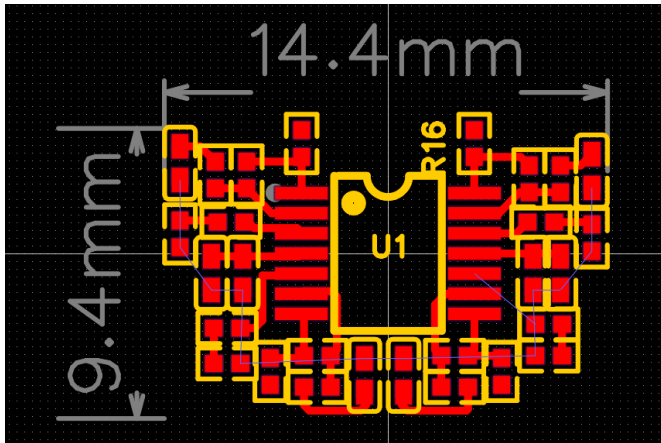


- 两块无胶无闪的SiPM均有暗电流过高的问题。
- 其中：
 - SiPM1~8 μA @ 31.0V
 - SiPM2~50 μA @ 31.0V
- SiPM2的ADC分布明显偏低。

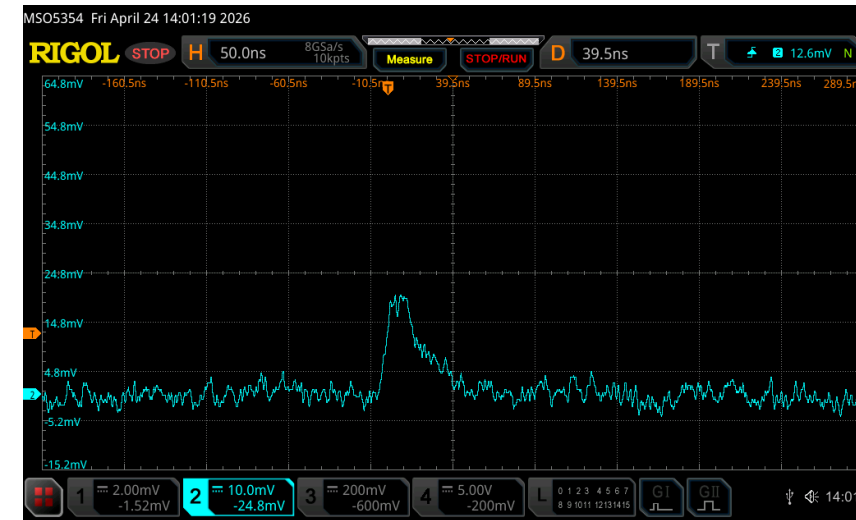
四通道前放



低功耗、带宽130 MHz四通道放大器

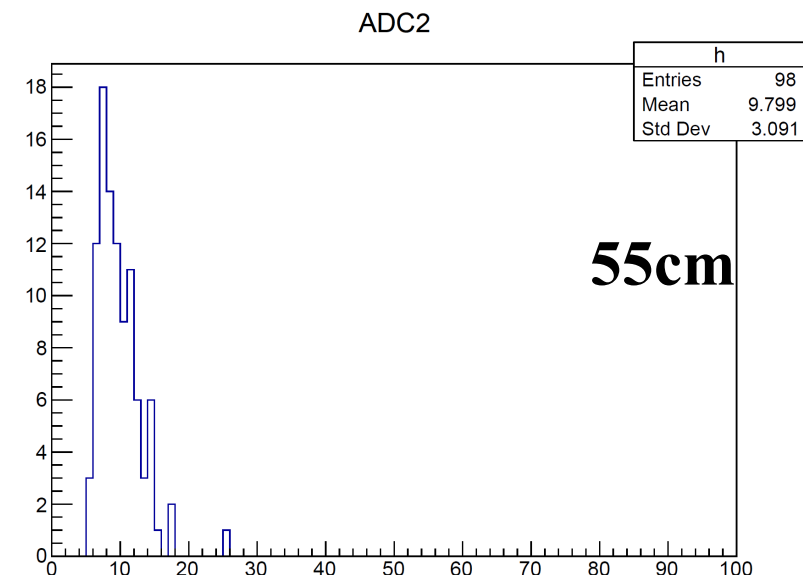
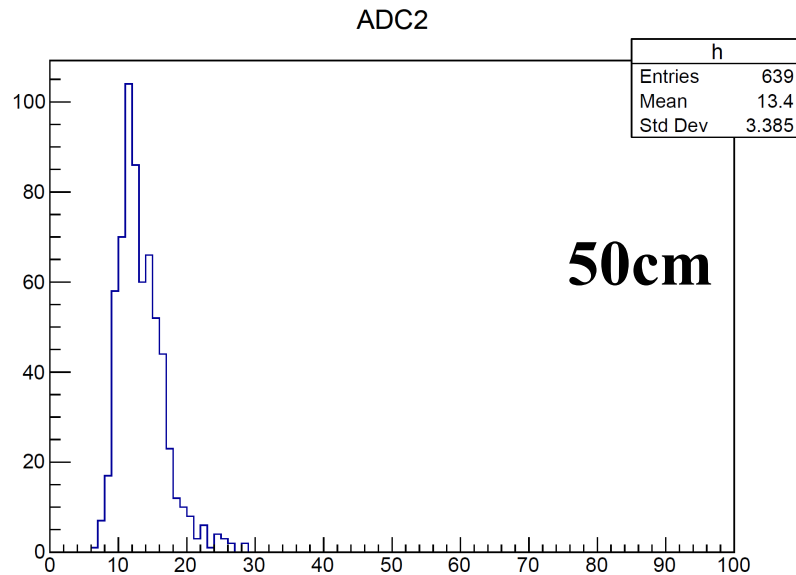
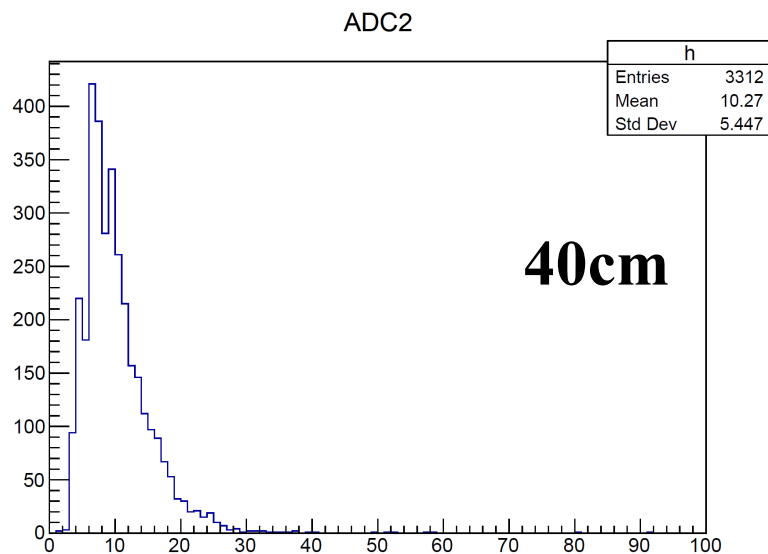
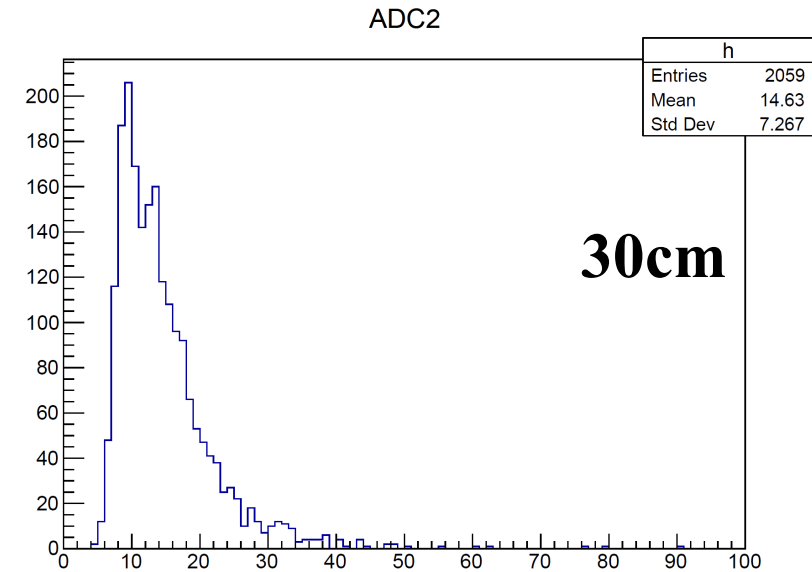
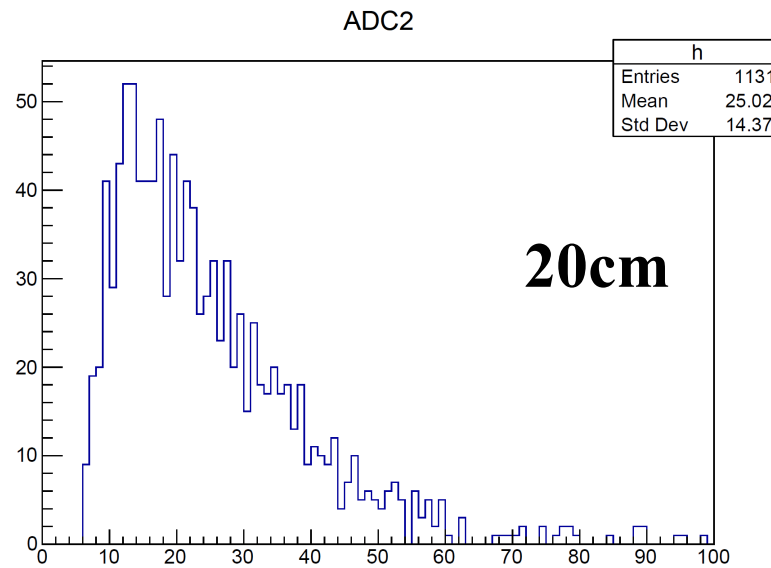
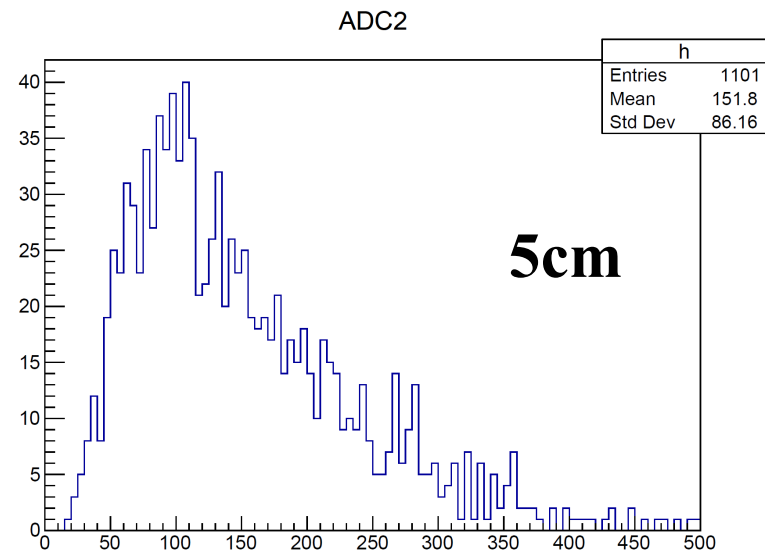


Previous Size: about 20mm * 20mm



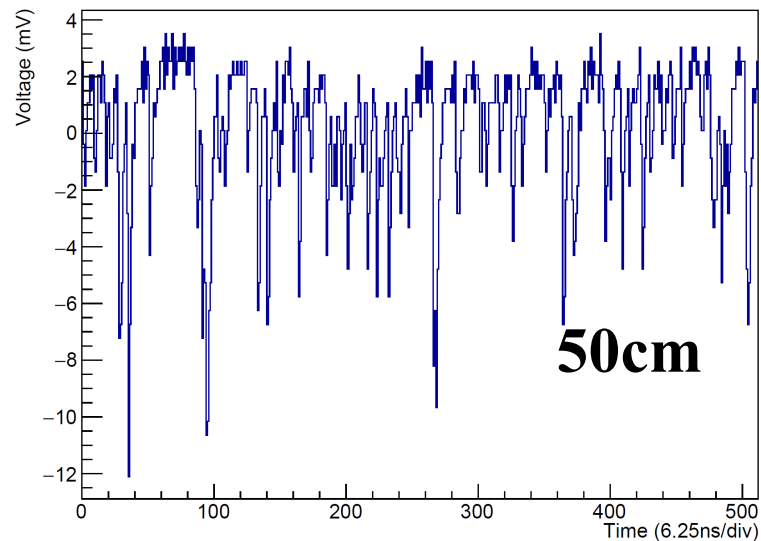
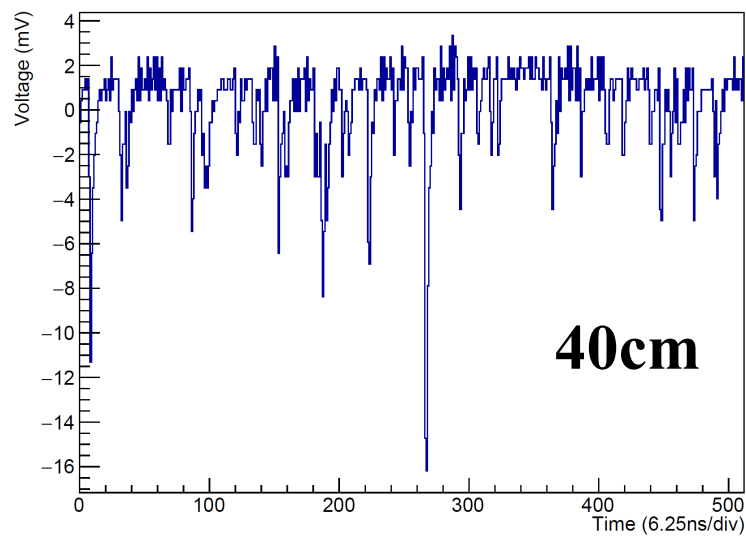
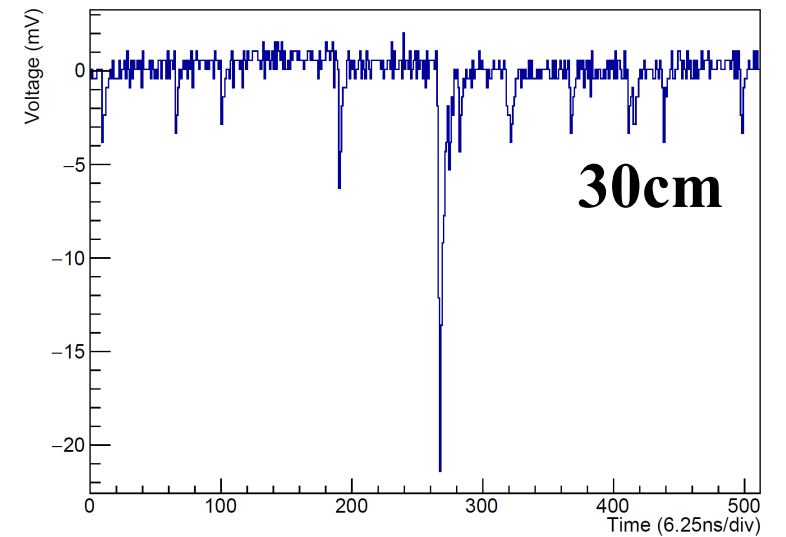
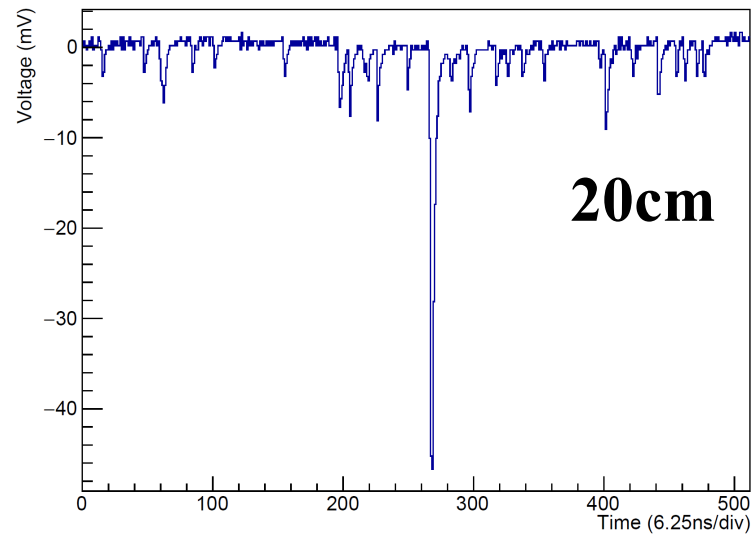
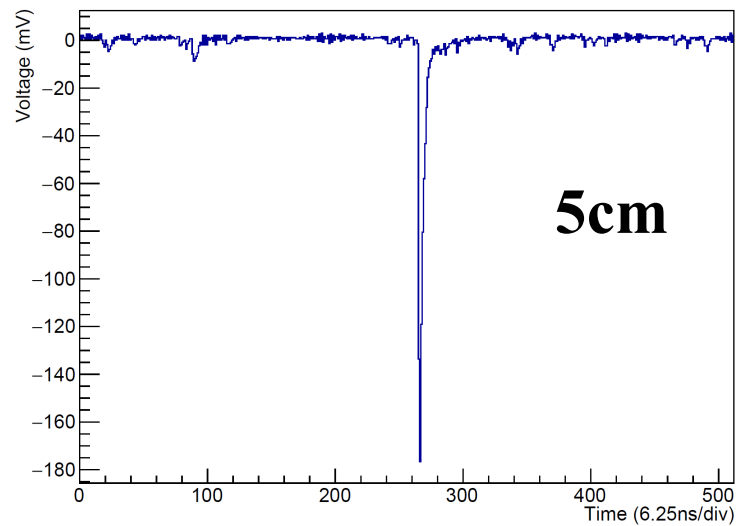
目前噪声偏大，放大倍数偏小，单光子湮灭在基线噪声内

5m长光纤测试



单根光纤塞入5m长塑闪测试结果

5m长光纤信号波形



- 在距离大于30cm时，已经看不出太明显宇宙线信号；
- 可能是因为孔直径太大，多数光打不到光纤上；
- 后续将光纤分割成多根进行测试。