

7th International Particle Accelerator Conference (IPAC'16)

Date: May 8-13, 2016
Venue: BEXCO, Busan, Korea

Venue: BEXCO, Busan, Korea

Host: Pohang Accelerator Laboratory (PAL)

Co-hosts: Korea Multipurpose Accelerator Complex (KOMAC)

Korea Institute of Radiological & Medical Sciences (KIRAMS)

Rare Isotope Science Project (RISP)



- **Date:** May 8 - 13, 2016

IPAC'12: New Orleans, USA

May 20-25, 2012

IPAC'13, Shanghai, China

May 13-17, 2013

IPAC'14: Dresden, Germany

June 16-20, 2014

IPAC'15: Richmond, USA

May 4-8, 2015

- **Venue:** BEXCO, Busan, Korea

- **Host:** Pohang Accelerator Laboratory (PAL)

- **Co-hosts:** Korea Multipurpose Accelerator Complex (KOMAC)
Korea Institute of Radiological & Medical Sciences (KIRAMS)
Rare Isotope Science Project (RISP)

- **OC Chair:** Won Namkung (PAL)

- **SPC Chair:** In Soo Ko (POSTECH)

- **LOC Chair:** Kyung Ryul Kim (PAL)

IPAC'16 OC Members

Namkung, Won, PAL (OC Chair)

Ko, In Soo, POSTECH (SPC Chair)

Arduini, Guianlugi, CERN (IPAC'17 OC Chair)

Assmann, Ralph, DESY

Barletta, William, MIT

Bisoffi, Giovanni, INFN-Legnaro

Boland, Mark, SLSA

Cho, Moo-hyun, PAL

Cho, Yong-Sub, KAERI

Collier, Paul, CERN

Marie-Emmanuelle, Couprie, Soleil

Hartouni, Ed, LLNL

Henderson, Stuart, ANL

Hutton, Amdrew, TJNAF (IPAC'15 OC Chair)

Jansson, Andrea, ESS

Jeon, Dong-O, IBS

Kanilal, Dinakar, IUAC

Kamigaito, Osamu, RIKEN

Kyung-Ryul Kim, PAL (IPAC16 LOC Chair)

Koseki, Tadashi, KEK

Kurokawa, Shinichi, Cosylab

Leng, Yongbin, SINAP

Liu, Lin, LNLS

Luo, Gwo-Huei, NSRRC

Merminga, Lia, TRIUMF

Nam, Sang -Hoon, KIRAM

Oide, Katsunobu, KEK (IPAC'10 OC Chair)

Petit-Jean-Genaz, Christine, CERN

Qing Qin, IHEP

Schriber, Stan, MSU

Seidel, Mike, PSI

Spentzouris, Linda, IIT

Suk, Hyyong, GIST

Tanaka, Hitoshi, SPring-8

Wolski, Andrzej, Cockroft Inst. and Univ. Liverpool (IPAC14 OC Chair)

Zhang, Chuang, IHEP (IPAC'13 SPC Chair)

Zhao, Zhentang, SINAP (IPAC'13 OC Chair)

Composition of SPCs

Main Classifications	Asian Coordinators	European/NA "Deputies"
1. Circular Colliders and Linear Colliders	Qin, Qing, IHEP	Collier, Paul, CERN
2. Synchrotron Light Sources and FELs	Tanaka, Hitoshi, SPring-8	Liu, Lin, LNLS
3. Alternative Particle Sources and Acceleration Techniques	Suk, Hyyong, GIST	Merminga, Lia, TRIUMF
4. Hadron Accelerators	Koseki, Tadashi, KEK	Jansson, Andreas, ESS
5. Beam Dynamics and Electromagnetic Fields	Boland, Mark, SLSA	Couprie, Marie-Emmanuelle, SOLEIL
6. Beam Instrumentation and Feedback	Leng, Yongbin, SSRF/SINAP	Spentzouris, Linda, IIT
7. Accelerator Technology Main Systems	Luo, Gwo-huei, NSRRC	Henderson, Stuart, FNAL (IPAC'15 SPC Chair)
8. Applications of Accelerators	Nam, Sang Hoon, KIRAMS	Seidel, Mike, PSI
Session on Engagement with Industry	Kurokawa, Shin-ichi, Cosylab	

IPAC'16 LOC Members

<i>Conference Chair</i>	<i>Won Namkung</i>
<i>Program Chair</i>	<i>In Soo Ko</i>
<i>LOC Chair</i>	<i>Kyung Ryul Kim</i>
<i>Prize Committee Chair</i>	<i>Shin-ichi Kurokawa</i>
<i>Scientific Secretary</i>	<i>Christine Petit-Jean-Genaz</i>
<i>Editorial Board Chair</i>	<i>Dong Eon Kim</i>
<i>Conference Secretary</i>	<i>Nayoung Kim</i>
<i>Website Manager</i>	<i>Kyung Sook Kim</i>
<i>IT Manager</i>	<i>Gyung Hwa Kim</i>
<i>Treasurer</i>	<i>Miso Park</i>
<i>Student Program</i>	<i>Heung-Sik Kang</i>
<i>Conference Coordinators</i>	<i>Kye Ryong Kim (KOMAC)</i>
<i>(External)</i>	<i>Geun-Bum Kim (KHIMA)</i>
	<i>Yeon Se Jeong (RISP/IBS)</i>

Program in General

- **May 8 (Sunday)**

Student Poster

Welcome Reception

- **May 9 (Monday) - 13 (Friday)**

Conference (Plenary, Parallel, and Poster)

Industrial Exhibition

- **May 9 (Monday)**

Chair's Reception (OC/SPC members, Invited Speakers, and Session Chairs)

- **May 12 (Thursday)**

Banquet

- **May 13 (Friday)**

Half day lab tour (13:00~20:00 travel + tour + dinner)

- * PLS II and PAL-XFEL (Pohang, 6 hours)*

- * KOMAC (Gyeongju, 5 hours)*

- * Carbon Therapy Accelerator (Kijang, 3 hours)*

2014

- *June: Formation of OC, SPC, and LOC*
- *Nov. 13(Thu)-16(Sun): OC/SPC1 at PAL (Pohang), Formation of SAB*

2015

- *May 8-9: SPC2 in Richmond (IPAC'15) (Invited Talks)*
- *July: Prize Committee starts activity*
- *August: Open Website*
- *December 7: Deadline of Abstract Submission, Student Prize and Grant*

2016

- *January: SPC3 in Melbourne (Contributed Oral Talks)*
- *March 14: Early Registration Closing*
- *May 4: Paper Submission Closing*
- *May 8-13: IPAC16*
- *November: Summary Report at Copenhagen (IPAC17)*

Budget Summary (Tentative)

(Unit: 1\$ = 1kWon)

■ *Income:* 1,360,000

- Registration (590 k)
- Industrial Exhibition (500 k)
- Host & Co-host (270 k)

■ *Expenses:* 1,360,000

- | | |
|-------------------------|-------------------|
| – Venue | – Lab Tour |
| – Rental Cost | – JACOW Support |
| – Conference Expenses | – Student Support |
| Banquet, Receptions | – Administration |
| – Coffee & Cookies, etc | – Others |

ACFA Members Participate-in SGP Program for IPAC15

- 30 students x 7 days x U\$ 227.00 = **U\$ 47,670**
 - *12 Institutions committed:*
 - Synchrotron Light Source Australia (Australia),
 - IHEP, SINAP, IMP* (China),
 - KEK, RIKEN Spring-8, RIKEN Nishina (Japan),
 - KOMAC, KIRAMS, IBS, PAL (Korea),
 - NSRRC (Taiwan).
- * Direct support of 3 Chinese students

Venue: BEXCO, Busan, Korea



1. No. 2 City in Korea with 3.7 Million Population
2. World's 5th Largest Container Port
3. Key Point in World Supply Chain Network
4. Centre of Korea's Southeastern Economic Belt
5. One of the top 4 Convention Cities in Asia by UIA*

* Union of International Association

Domestic Accessibility

Incheon Airport \Leftrightarrow Busan, Direct Service started in 2014

- Train by KTX (High Speed Train) : ~ 3 hrs

[Weekend 72 times/day, Weekday 62 times/day, Seoul/Busan]

- Flight (Gimpo & Incheon Airport \Leftrightarrow Busan) : 50 min, > 29 times/day

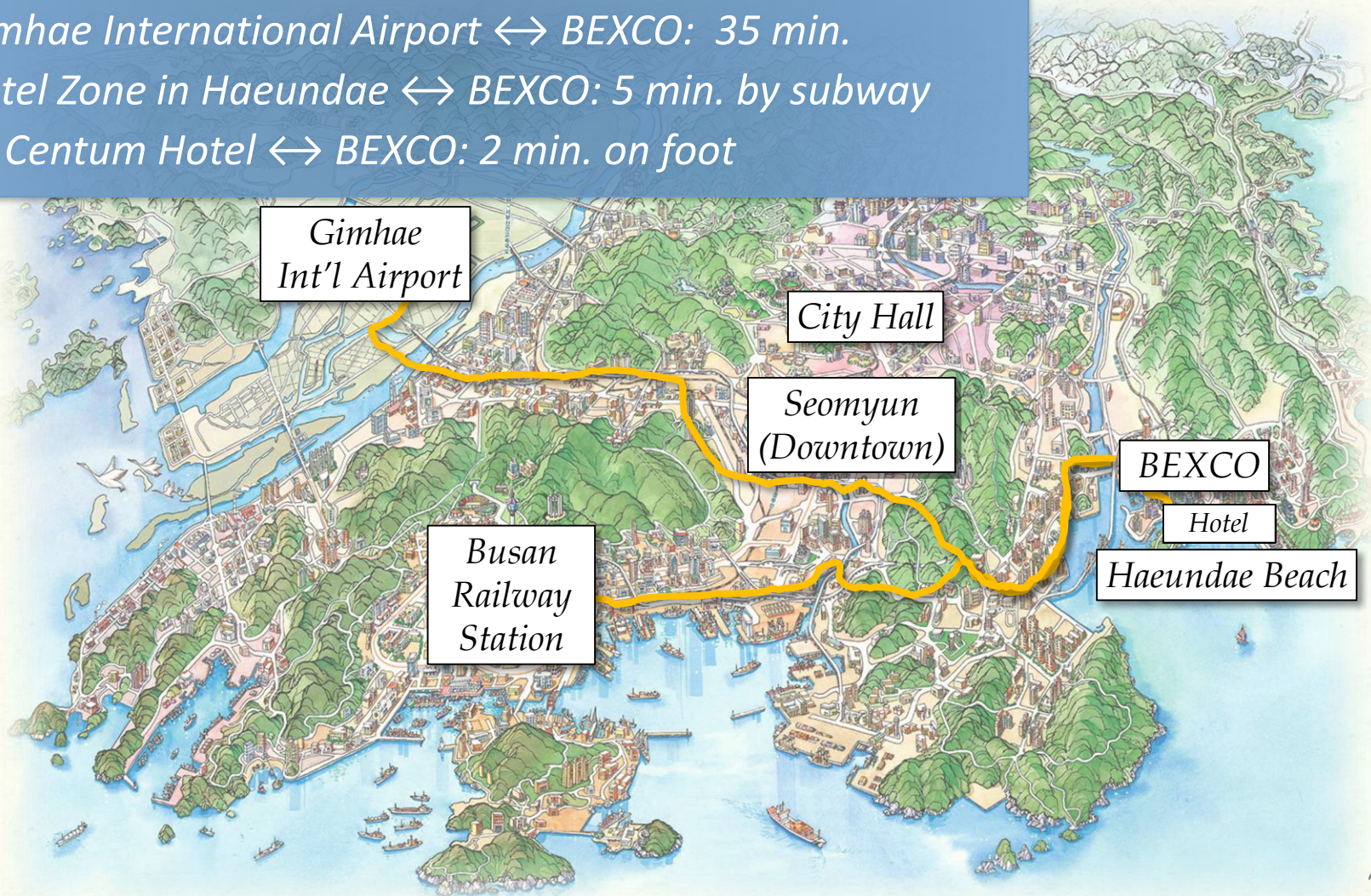
Weather in May

- ✓ **Average Temp: 17.5°C**
 High: 21.7°C
 Low: 14.1°C
- ✓ **Precipitation: 157.4 mm**
- ✓ **Humidity: 69.8%**



Urban Transportation

- Busan Railway Station (KTX) \leftrightarrow BEXCO: 30 min.
- Gimhae International Airport \leftrightarrow BEXCO: 35 min.
- Hotel Zone in Haeundae \leftrightarrow BEXCO: 5 min. by subway
- ** Centum Hotel \leftrightarrow BEXCO: 2 min. on foot



Urban Transportation – Subway Access



Subway Station	Elapsed time
Centum City	3 min.
Busan Museum of Modern Art	5 min.

BEXCO & its Vicinity

BEXCO (Busan Exhibition & Convention Center), occupying an area of **92,761 m²**, consisting of one basement and seven ground floors, **BEXCO is an exhibition & convention center of global scope.**

1. Exhibition Hall

2. ► **Convention Hall - IPAC Venue**

3. Multi-functional Hall

4. Open-air Space

5. Office Block

6. Parking Lot

7. Art Museum

8. Homeplus/TESCO

9. Centum City Subway Station

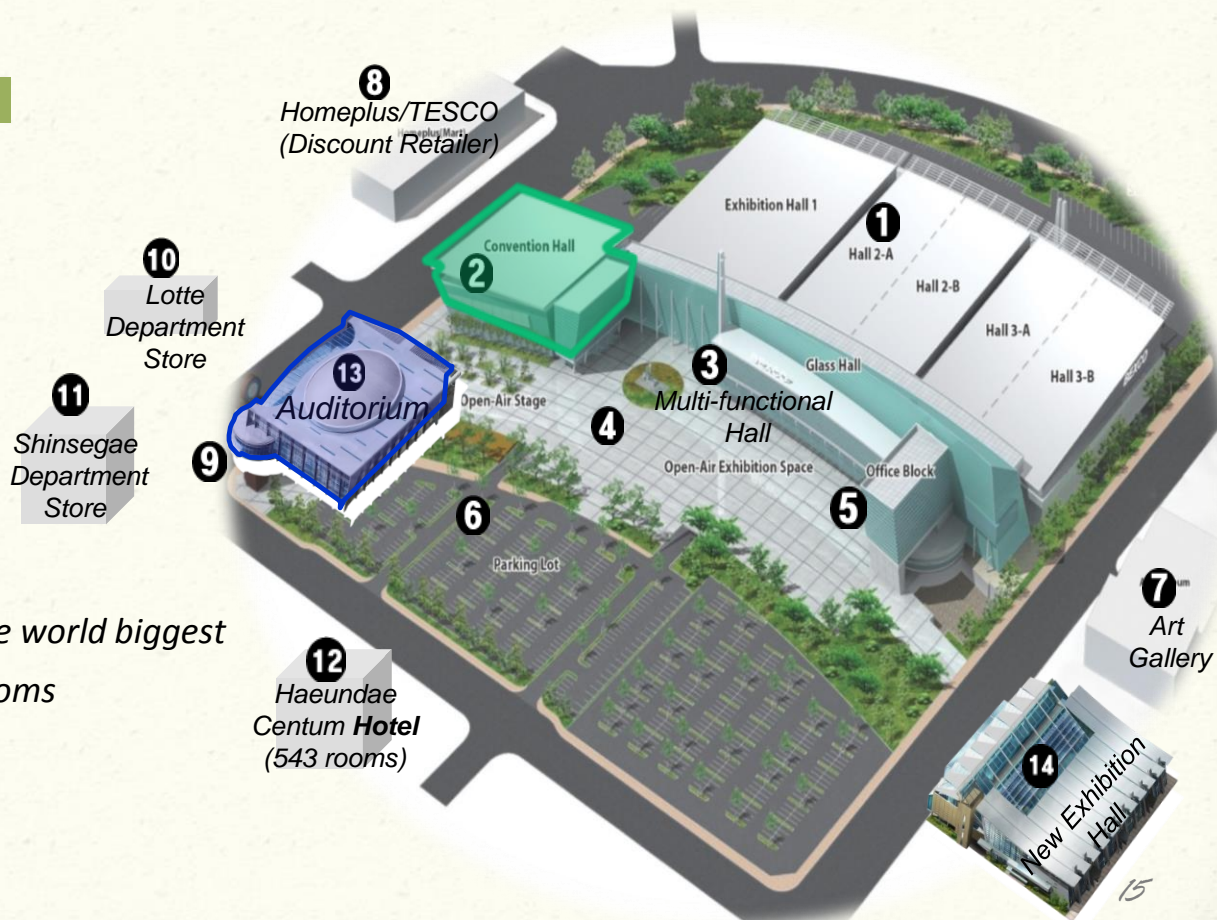
10. Lotte Department Store

11. Shinsegae Department Store - The world biggest

12. Haeundae Centum Hotel - 543 rooms

13. ► **Auditorium – IPAC Venue**

14. New Exhibition Hall



BEXCO - Auditorium

Total : 4,002 Seats

Sky Bridge
to Convention Hall

1,800 Seats

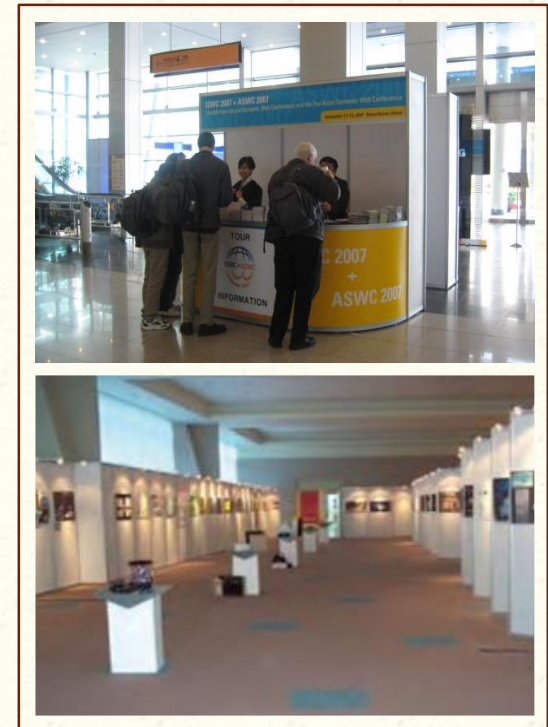
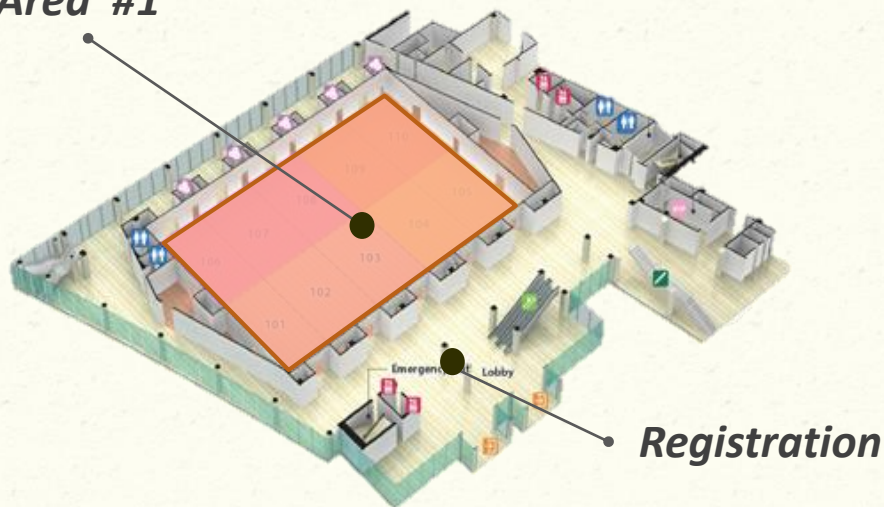


[Picture of the 2nd IPAC in Spain]

BEXCO - Convention Hall, 1st floor

- 10 conference rooms
- Creation of versatile space using portable partitions
- Built-in screen, portable projector
- Spacious lobby - coffee break, registration

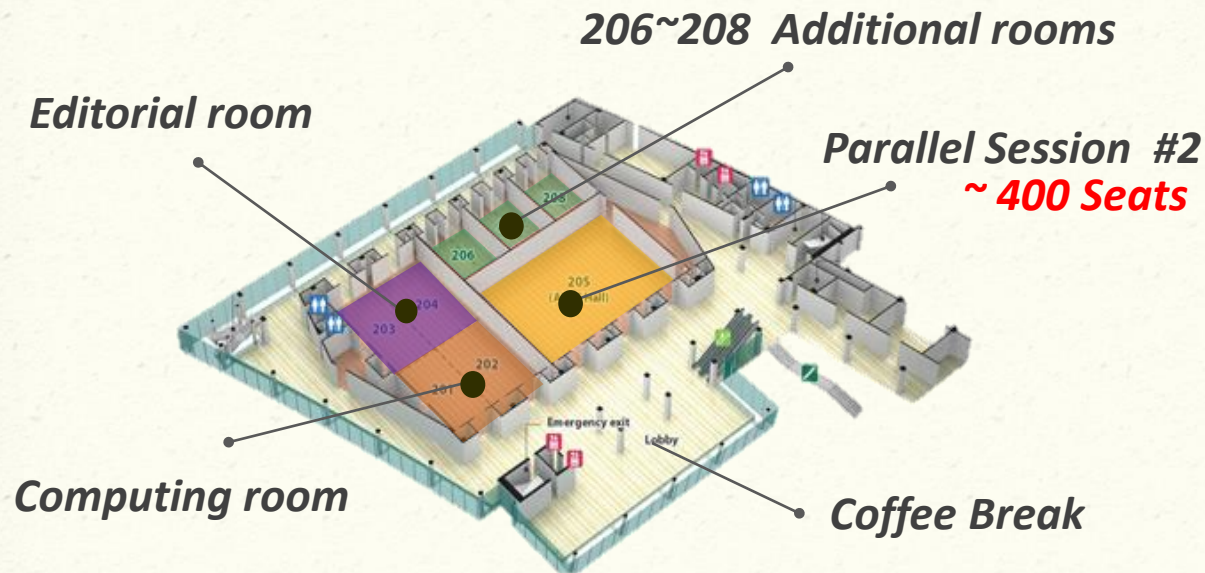
Industrial Exhibition & Poster Area #1



HALL	Unit	W X L X H(m)	m ²	Theater Type	Accommodation Capacity		
					Class Type	Banquet Type	Reception Type
101~110	Each room	16 X 9 X 5	144	150	72	70	90

BEXCO – Convention Hall, 2nd floor

- 11 conference rooms
- Creation of versatile space using portable partitions
- Built-in screen, portable projector
- Spacious lobby - coffee break, registration

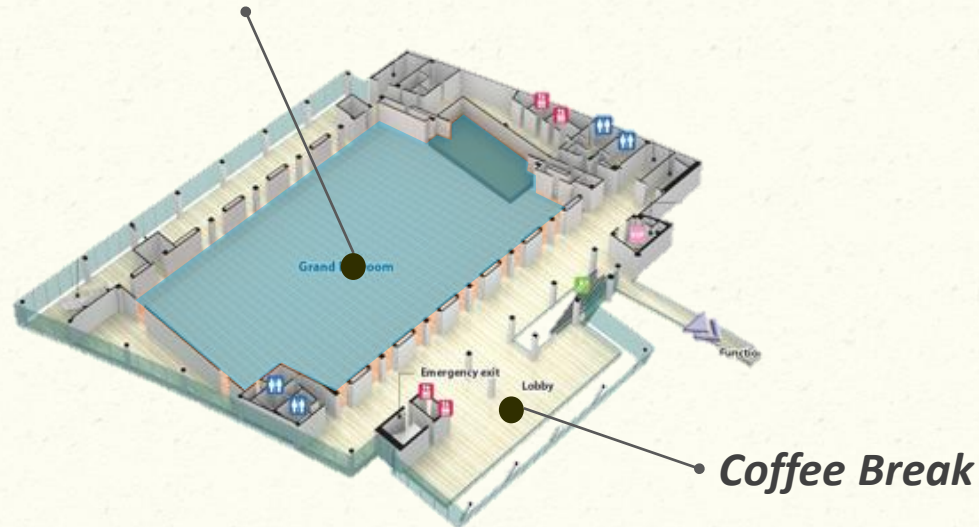


HALL	Unit	W X L X H(m)	m ²	Accommodation Capacity			
				Theater Type	Class Type	Banquet Type	Reception Type
201,202,203,204	Each room	16 X 9 X 5	144	150	72	70	90
205(APEC Hall)	Each room	20.5 X 27 X 5	554	540	256	320	450
206,207,208	Each room	11.5 X 9 X 5	104	100	52	50	80 <i>18</i>

BEXCO - Convention Hall, 3rd floor

- Fixed Stage
- Built-in Simultaneous interpretation Booth(8 languages)
- Built-in screen, portable projector
- Spacious lobby - coffee break, registration

Industrial Exhibition & Poster Area #2



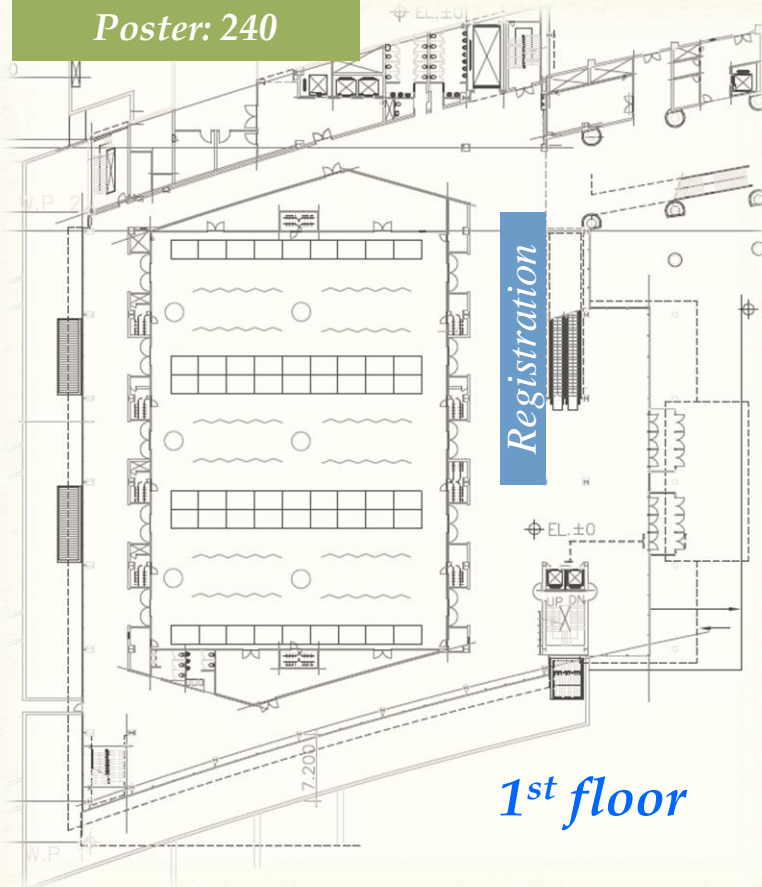
[Exhibition of the 2nd IPAC in Spain]

HALL	W X L X H(m)	m ²	Theater Type	Accommodation Capacity		
				Class Type	Banquet Type	Reception Type
Grand Ballroom	63 X 33 X 8~13	2,082	2,400	1,000	1,200	2,000

Poster and Exhibition Area – plan 3

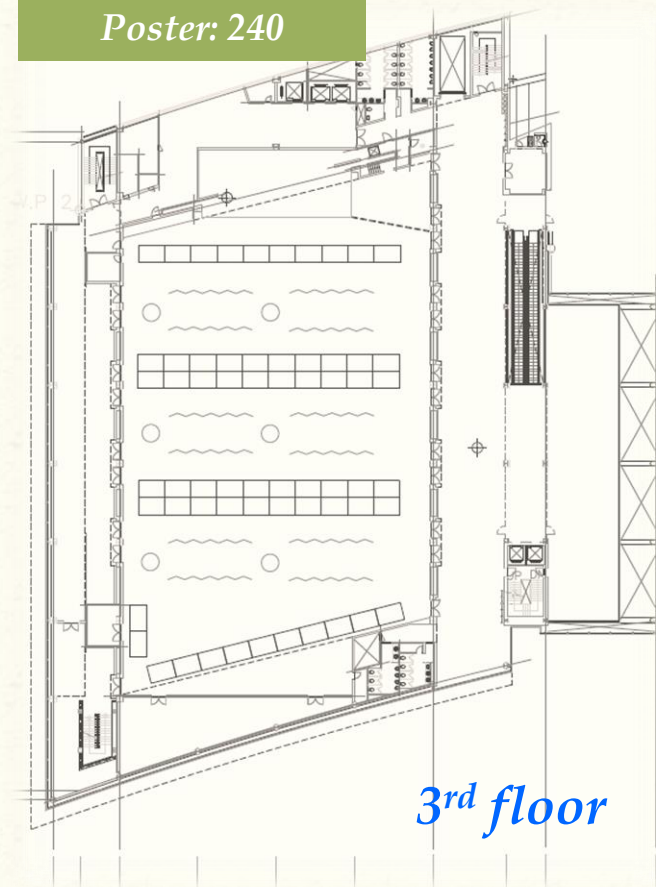
Exhibition: 116 / Poster: 480

*Exhibition: 54
Poster: 240*



1st floor

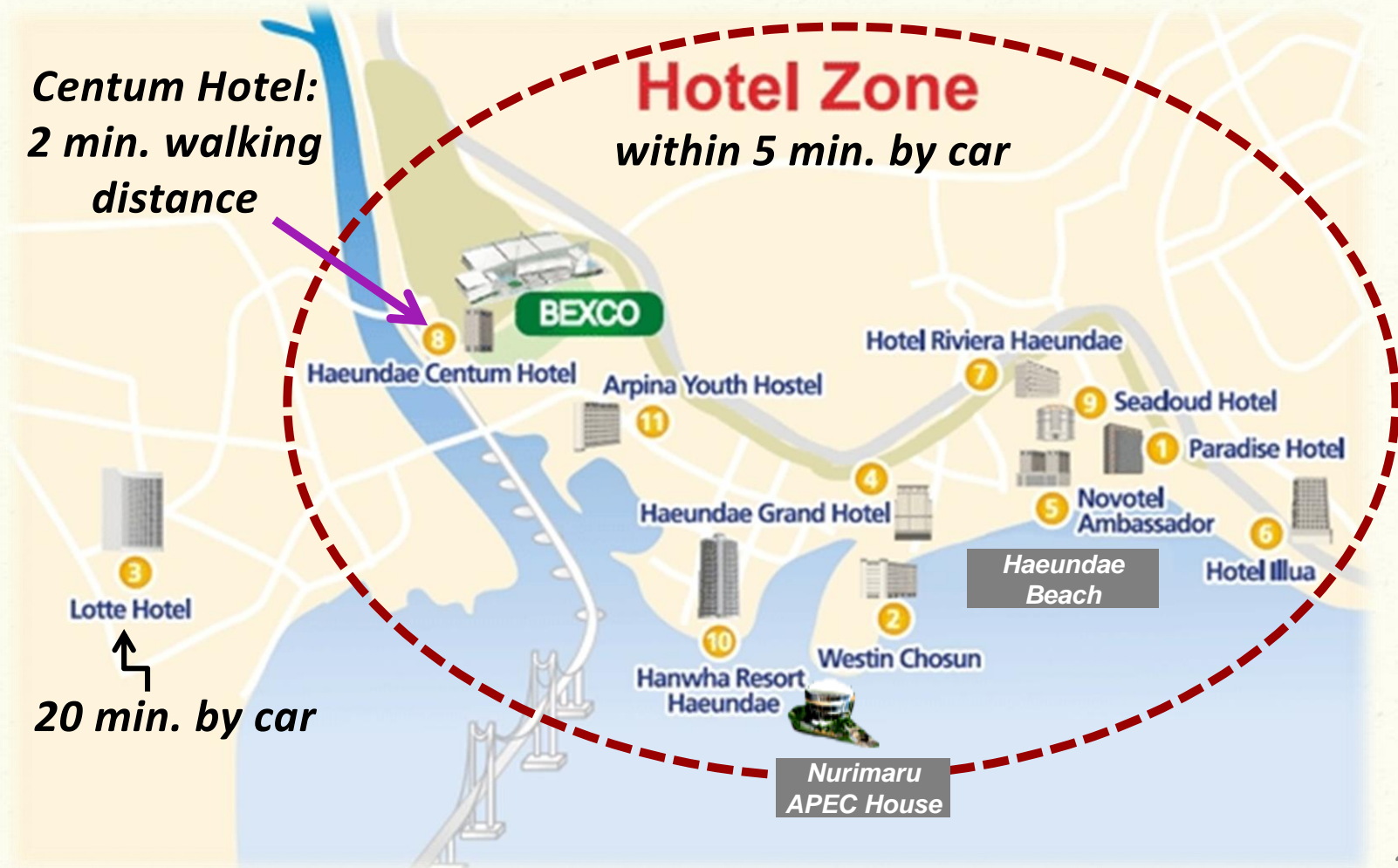
*Exhibition: 62
Poster: 240*



3rd floor

Lodging Facilities

*More than 9,000 hotel rooms are available in Busan
Over 5,000 hotel rooms are located in Haeundae area*



Nurimaru for Chairman's Reception





*Busan, BEXCO, and PAL are fully prepared for
International Particle Accelerator Conference 2016*

PAL-XFEL (Jan. 4, 2015)

