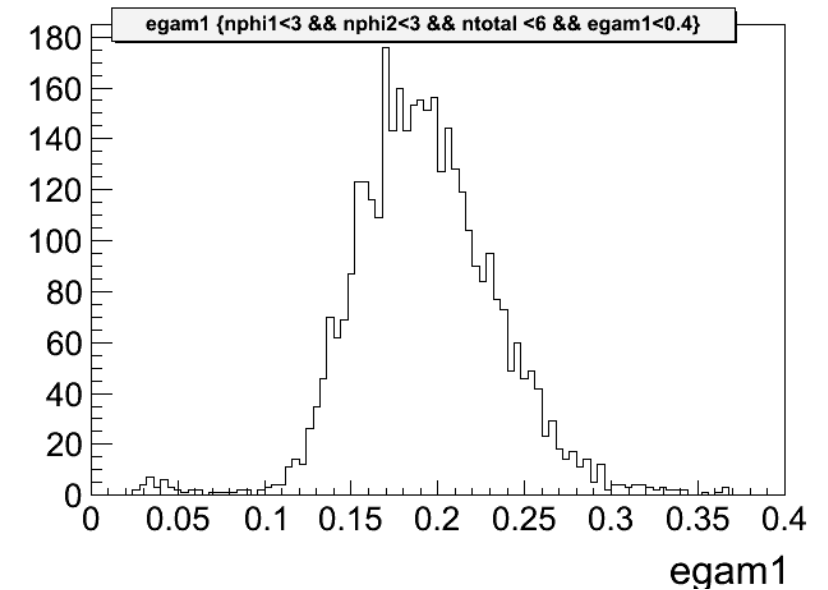


Weekly report

ChicJ analysis

- Suyu gave a report on the NPG, some comments have been collected.
- NPG approved to give a report on the Collaboration meeting.
- Updated the preSelection Alg.
 - save position information, especially phi angle for each hit in MDC,
 - requirement on number of hits in [a phi angle range\(30° \)](#) for each shower.

Preliminary result using 2012 real data sample.



- no obvious peak could be seen, when requiring nealy no hit in MDC.

Next to do

- check trigger channel information for selected events.
- may change the selection cuts for GOOD photon candidates, for example, the TDC window.
- the background may be hard to eliminate
 - they may not only from beam related charged tracks---- $e^+ e^-$ from beam bunch;
 - the photons from collisions / losted beam particles may also contribute, if so, it will be challenging
- To reach a conclusion whether this analysis could be done, ASAP.