

Preparation toward the IV measurement

11/22/2018

Probe Station in the main building (electronics group)

- Cascade Microtech PM8
 - simple but solid manual prober
 - electrical connection to the chuck is ? maybe it is connected to GND.



sensors have bare pad on its backside, , ,
therefore, if that is the case, we could only
apply bias voltage on the pads on the surface



Source Measurement Unit

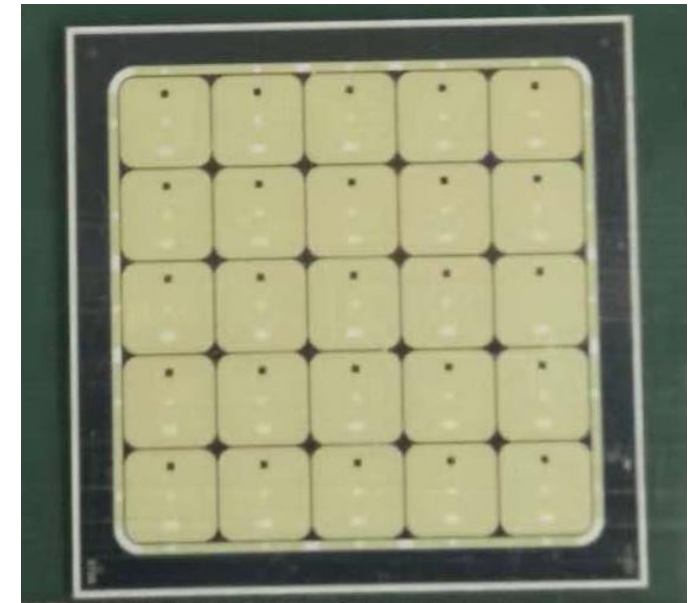
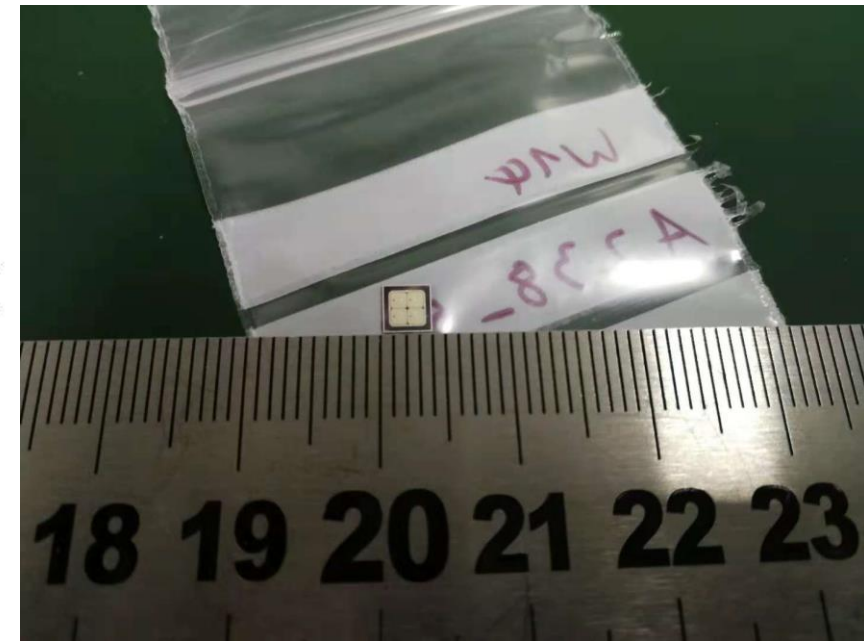
- KEITHLEY 2410
 - bias voltage of up to 1kV
 - need banana-jack connection
 - additional accessories will be ordered/arranged. (by Yuhang !)



KEITHLEY "2400" found/test quite recently

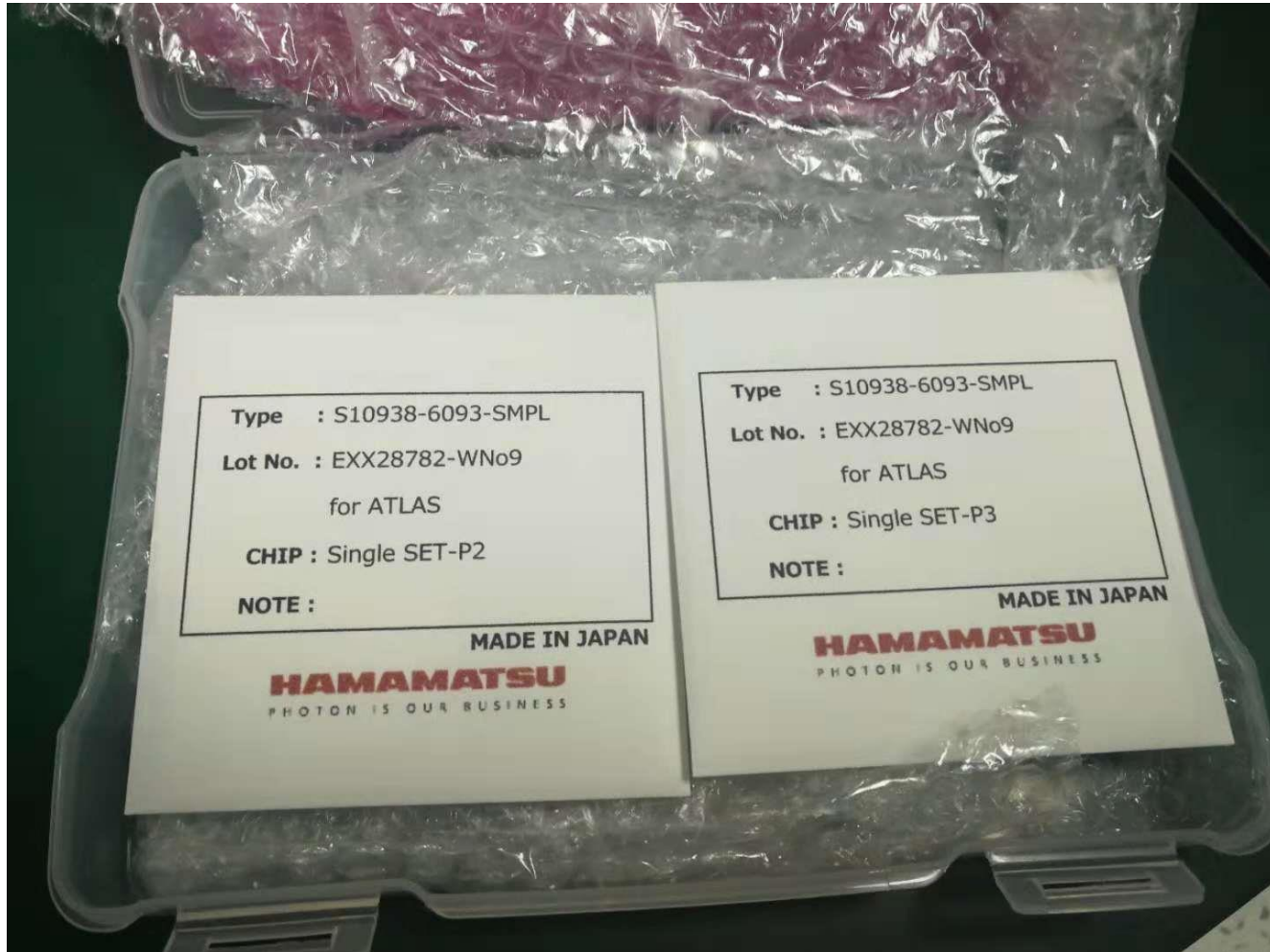
List : Available sensors

Label 1	Label 2	Type	Label 1	Label 2	Type	Label 1	Label 2	Type
DA56P	W3	single (PIN)	A204-37	W14	2x2	A502-57	W3	5x5
DA56P	W7	single (PIN)	A205-37	W14	2x2	A502-57	W5	5x5
DA56P	W9	single (PIN)	A206-37	W14	2x2	A502-57	W7	5x5
DA56P	W14	single (PIN)	A220-47	W14	2x2	A502-57	W9	5x5
			A221-47	W14	2x2	A502-57	W11	5x5
DA45	W3	single	A222-47	W14	2x2	A502-57	W14	5x5
DA45	W5	single	A238-57	W14	2x2			
DA45	W7	single	A239-57	W14	2x2	A510-47	W3	5x5
DA45	W9	single	A240-57	W14	2x2	A510-47	W5	5x5
DA45	W11	single				A510-47	W7	5x5
DA45	W14	single	A204-37	W7	2x2	A510-47	W9	5x5
			A205-37	W7	2x2	A510-47	W11	5x5
DA46	W3	single	A206-37	W7	2x2	A510-47	W14	5x5
DA46	W5	single	A220-47	W7	2x2			
DA46	W7	single	A221-47	W7	2x2			
DA46	W9	single	A222-47	W7	2x2			
DA46	W11	single	A238-57	W7	2x2			
DA46	W14	single	A239-57	W7	2x2			
			A240-57	W7	2x2			

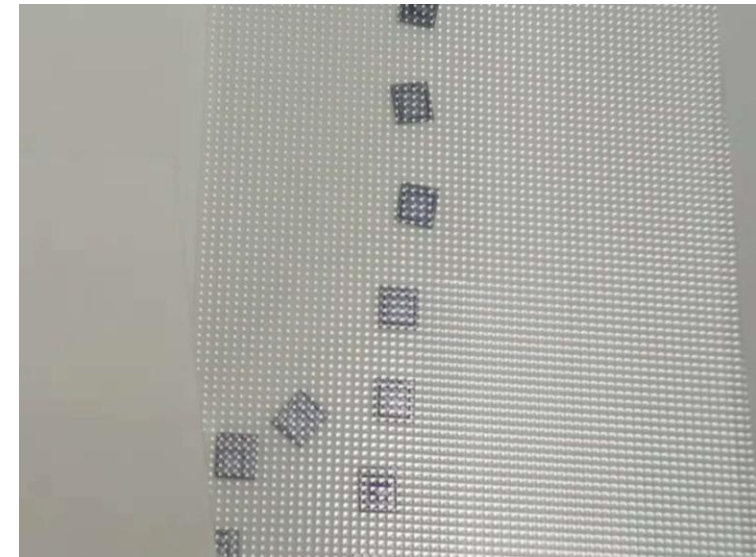


List : Available sensors

HPK sensors



Are they “test samples”
with single pad ?



Comments

-- Need to confirm the probe station a little bit.

-- Try to connect the whole system tomorrow (especially , it is better if materials we have ordered arrive tomorrow) ?