

Sensor simulation

Mei Zhao

2018.11.29

Doping: $1e18/3e16$

- 400V

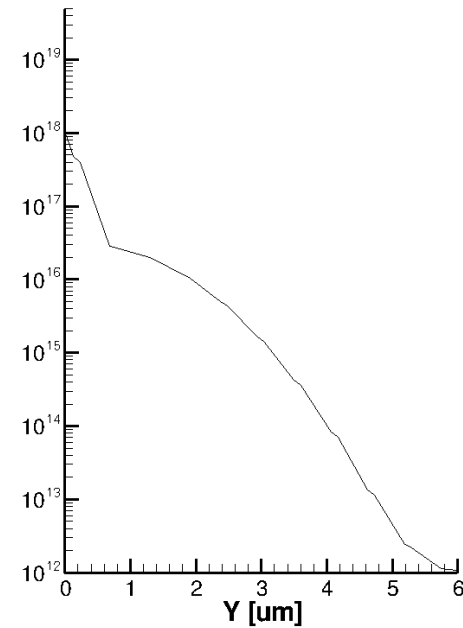
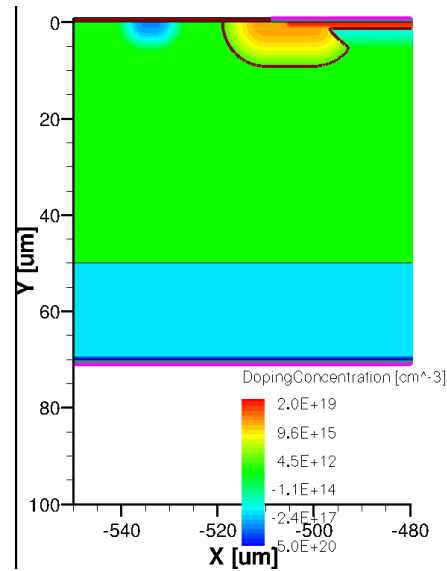
Gain: 13.5

- 300V

Gain: 6.1

- 200V

Gain: 5.76

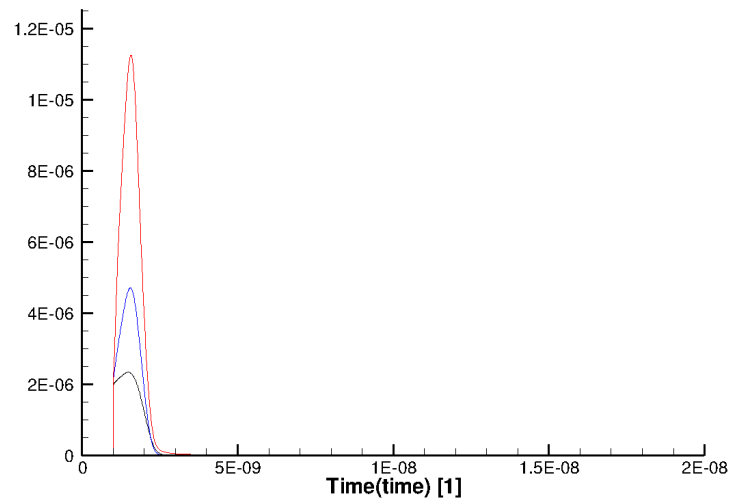


Doping profile

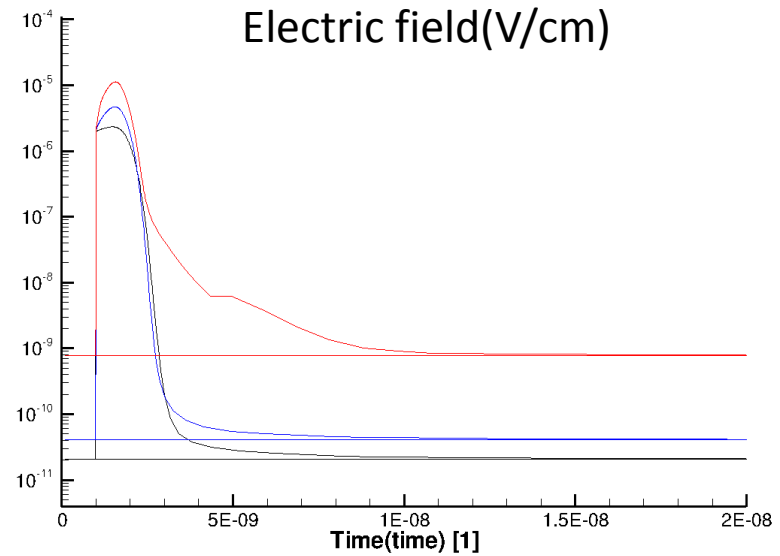
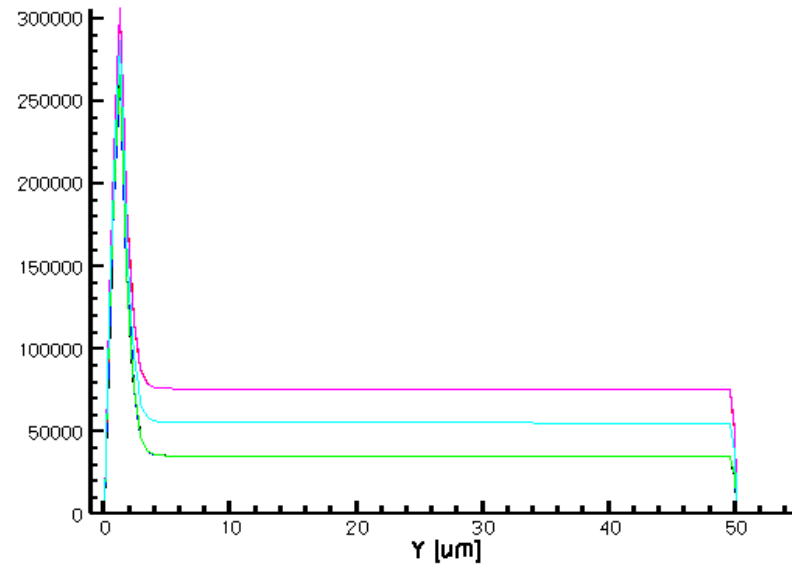
- 200V/300V/400V

34445 V/cm

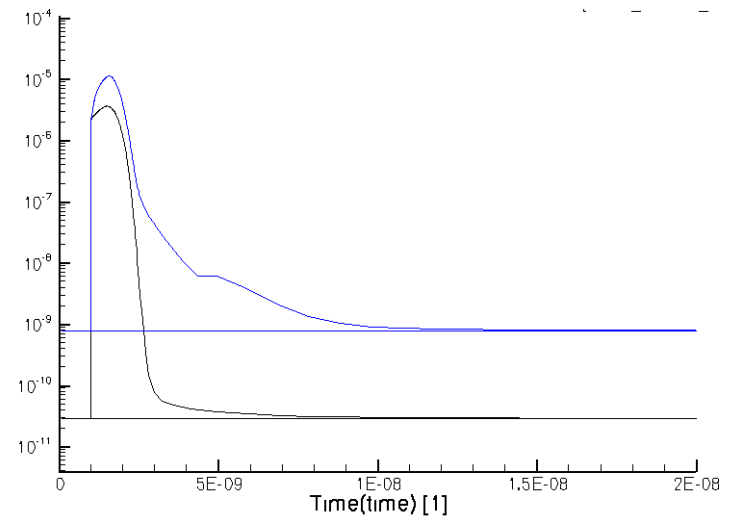
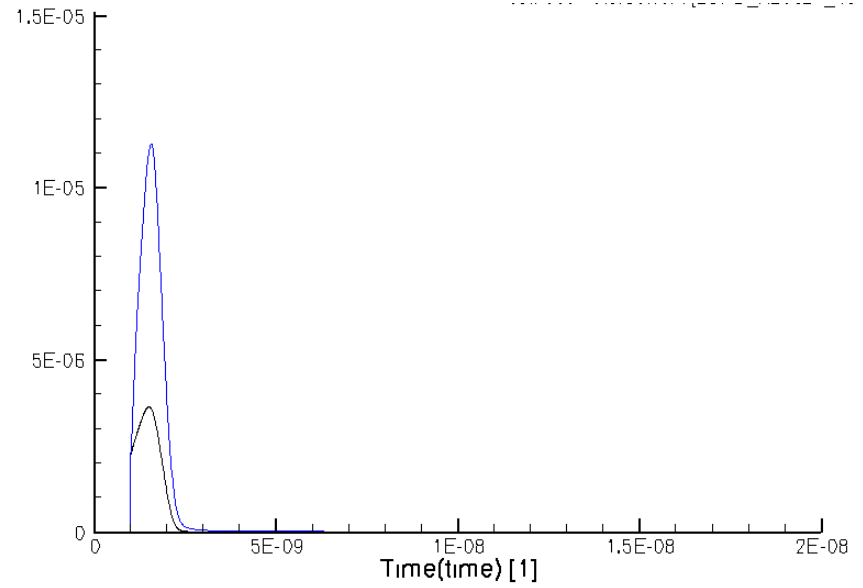
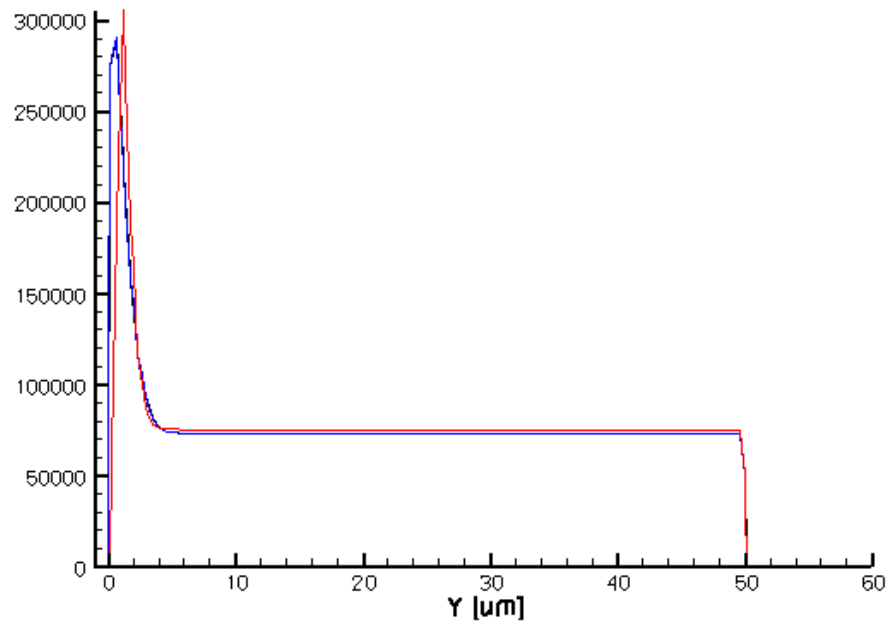
54792 V/cm



Signal at 400V with MIP (A/um)



- $1e16$ --- $3e16$
- 400V



- Draw layout

- Test

Training of probe station in cleanroom