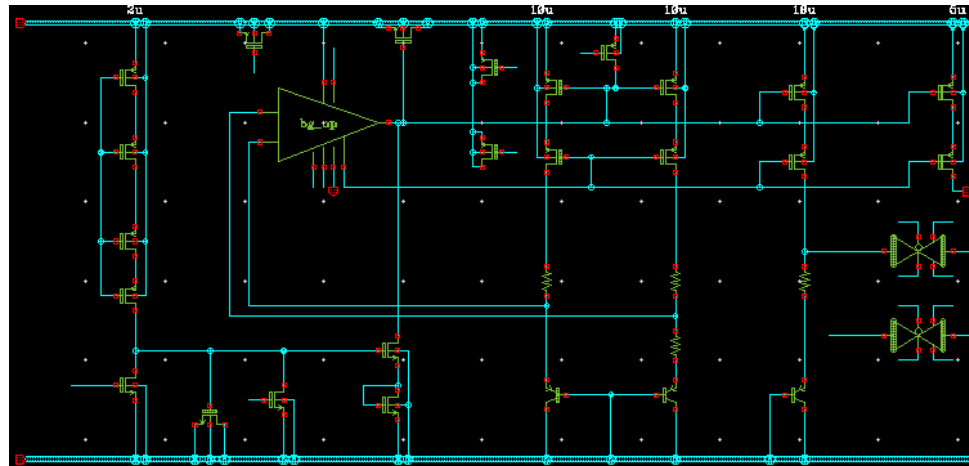
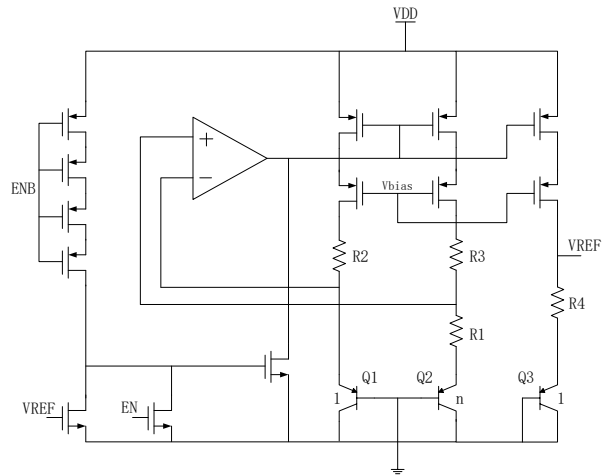


Simulation Results

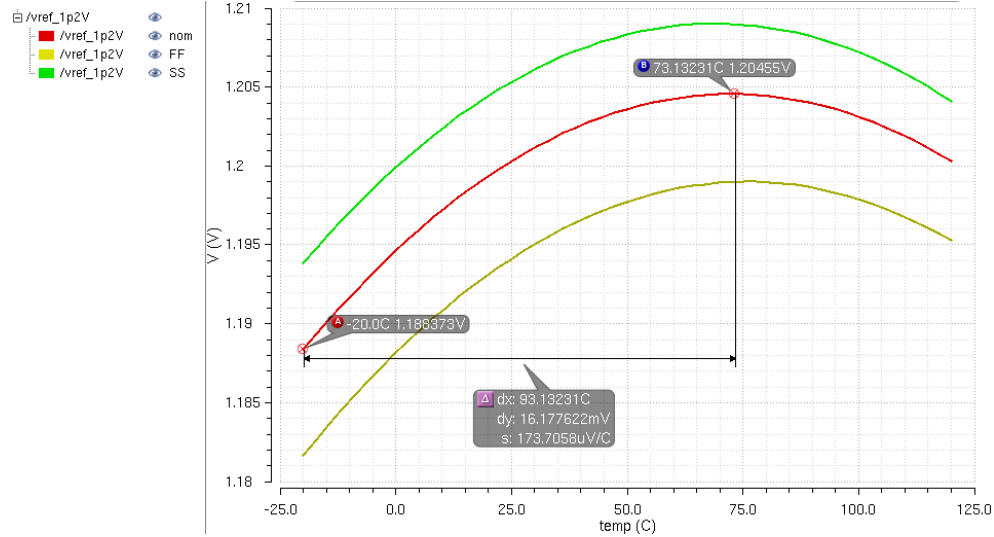
↶ $I = V_T \cdot \ln(N)/R_1 \quad V_{REF} = V_{EB3} + R_4/R_1 \cdot \ln(N) \cdot V_T$

↶ $V_{REF}=1.2V$

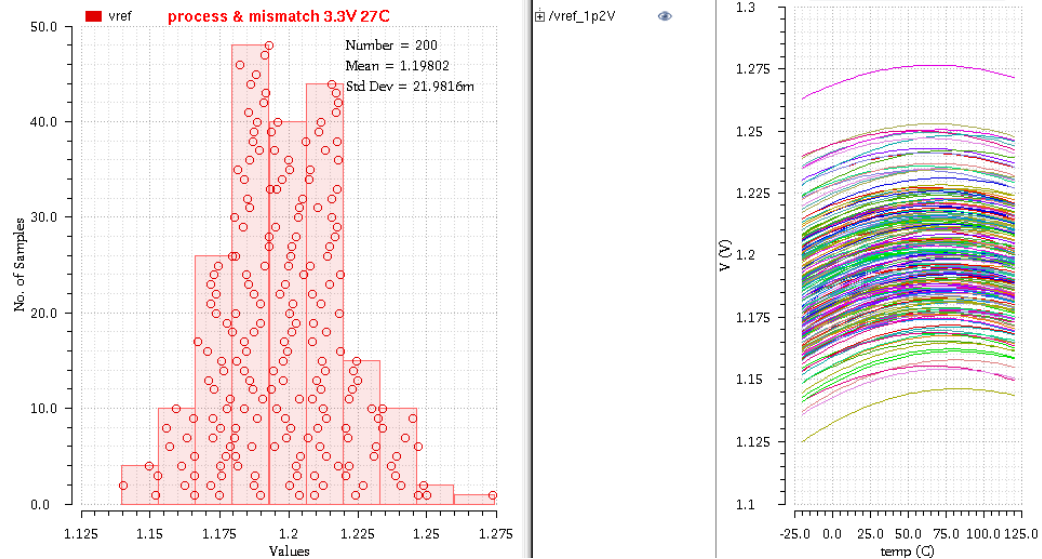


Simulation Results

DC Corner

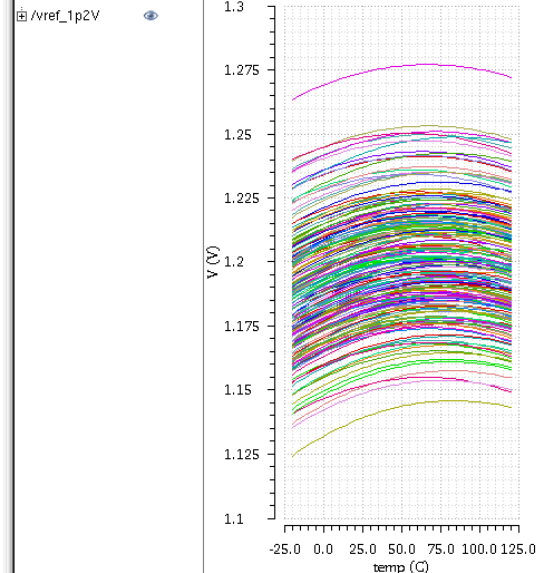
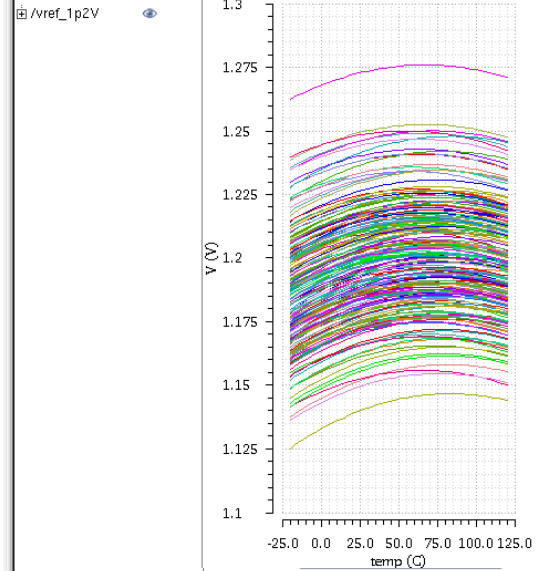
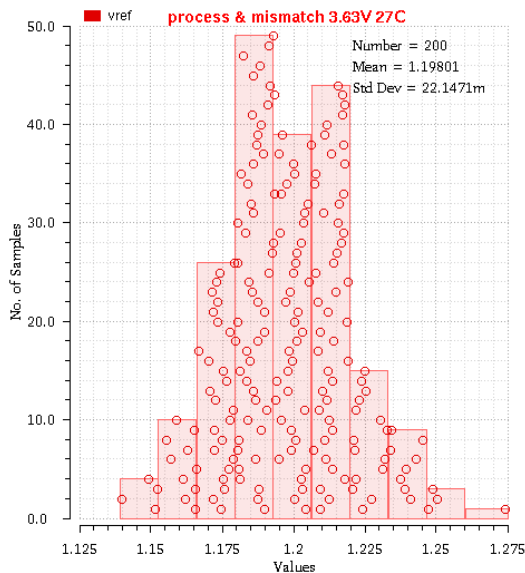
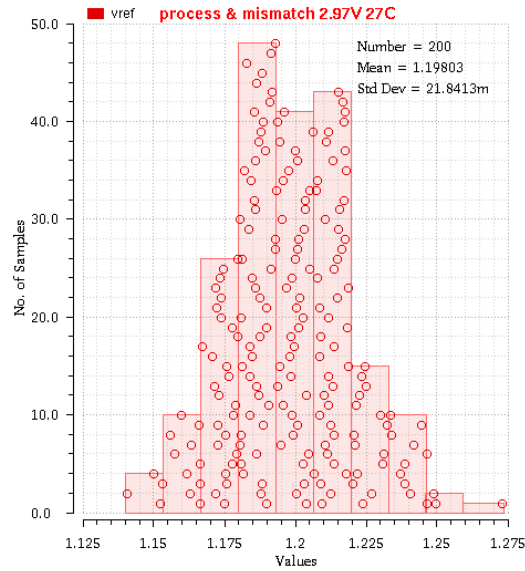


DC Monte Carlo



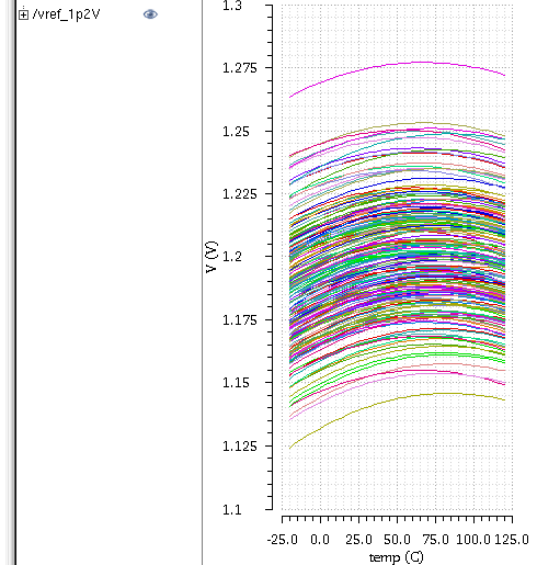
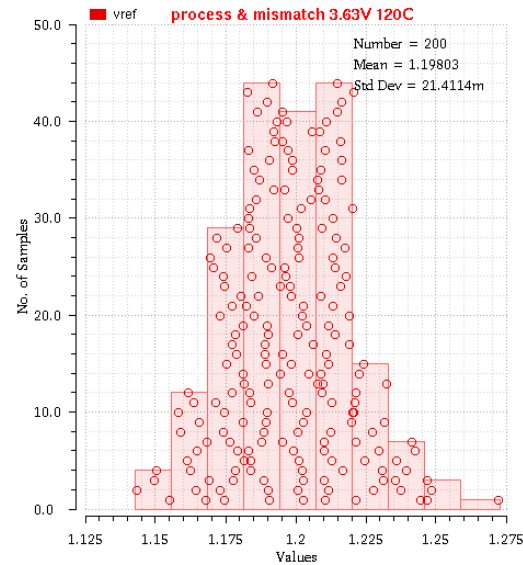
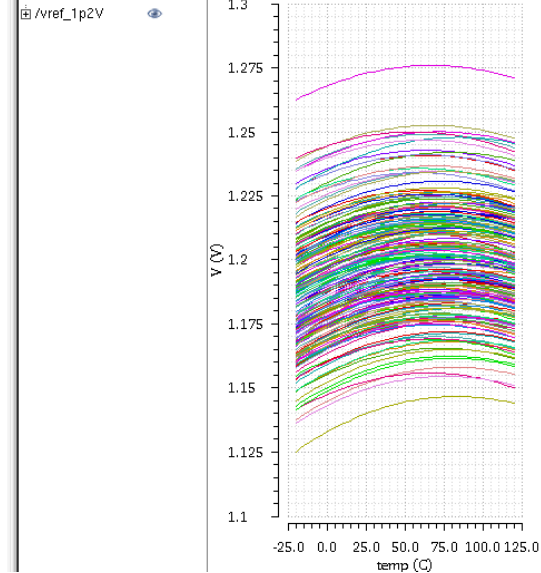
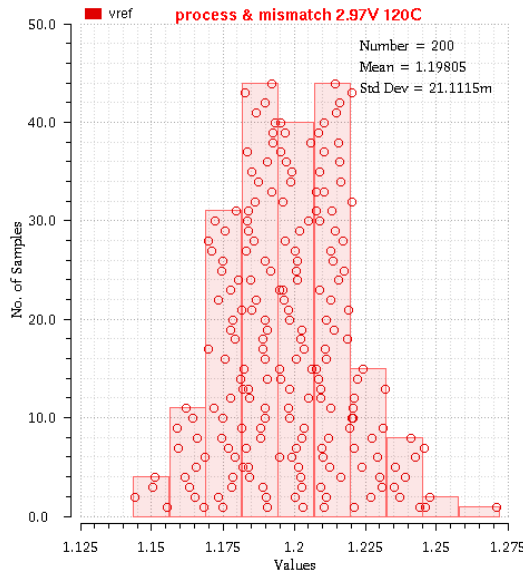
Simulation Results

DC Monte Carlo



Simulation Results

DC Monte Carlo



Simulation Results

DC Monte Carlo

