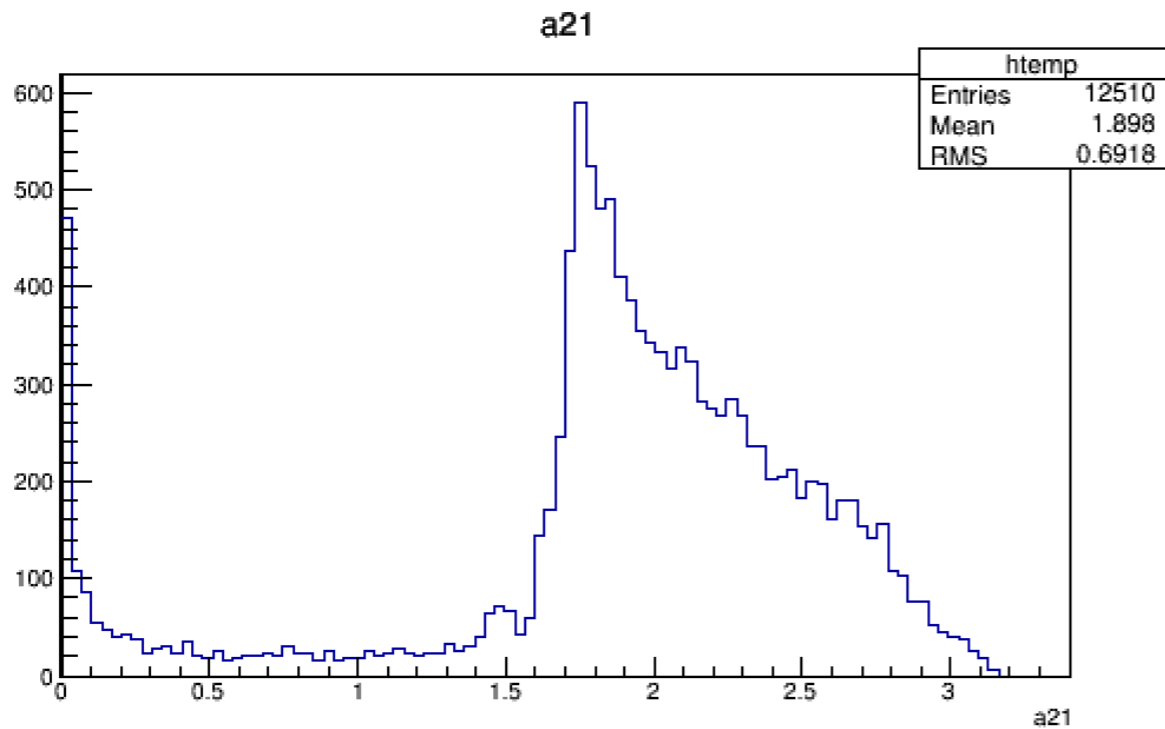


sort mu+/mu- by energy

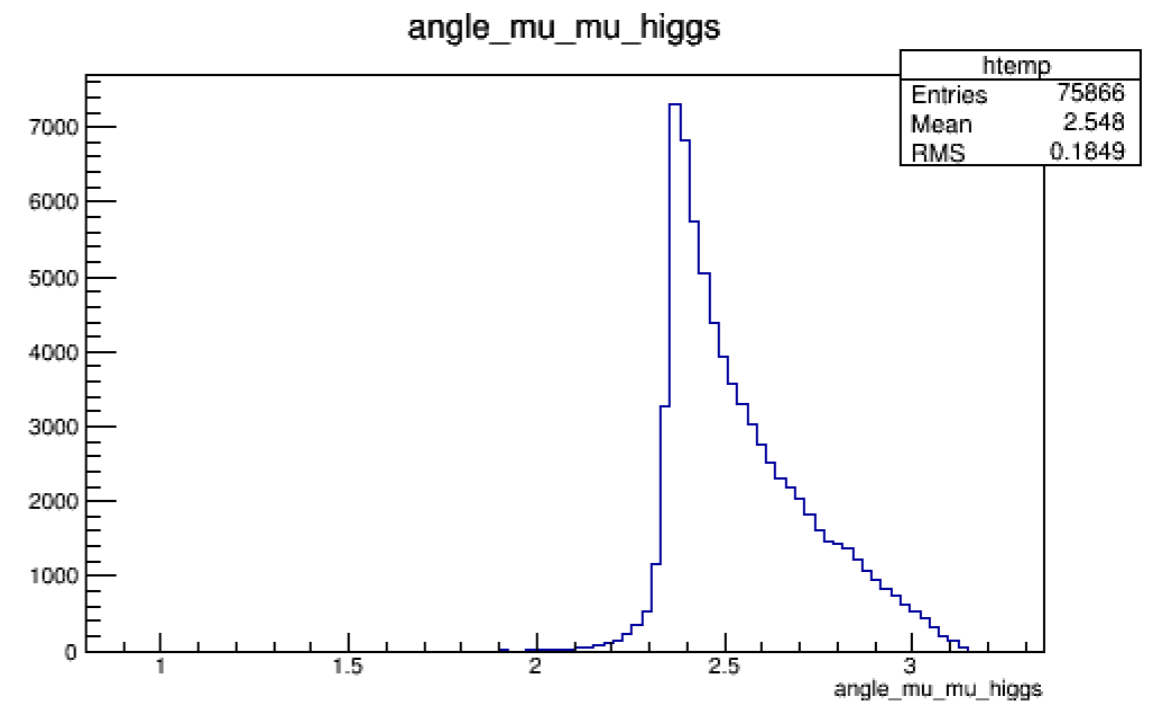
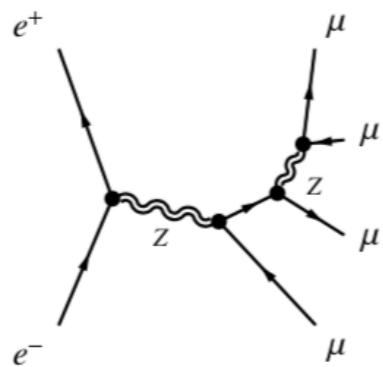
zz_l(4mu)bkg process

m12 means the mass of mu- with the larger energy & mu- with the smaller energy

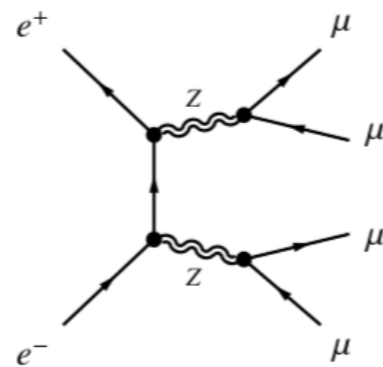
use angle distribution to combine muons



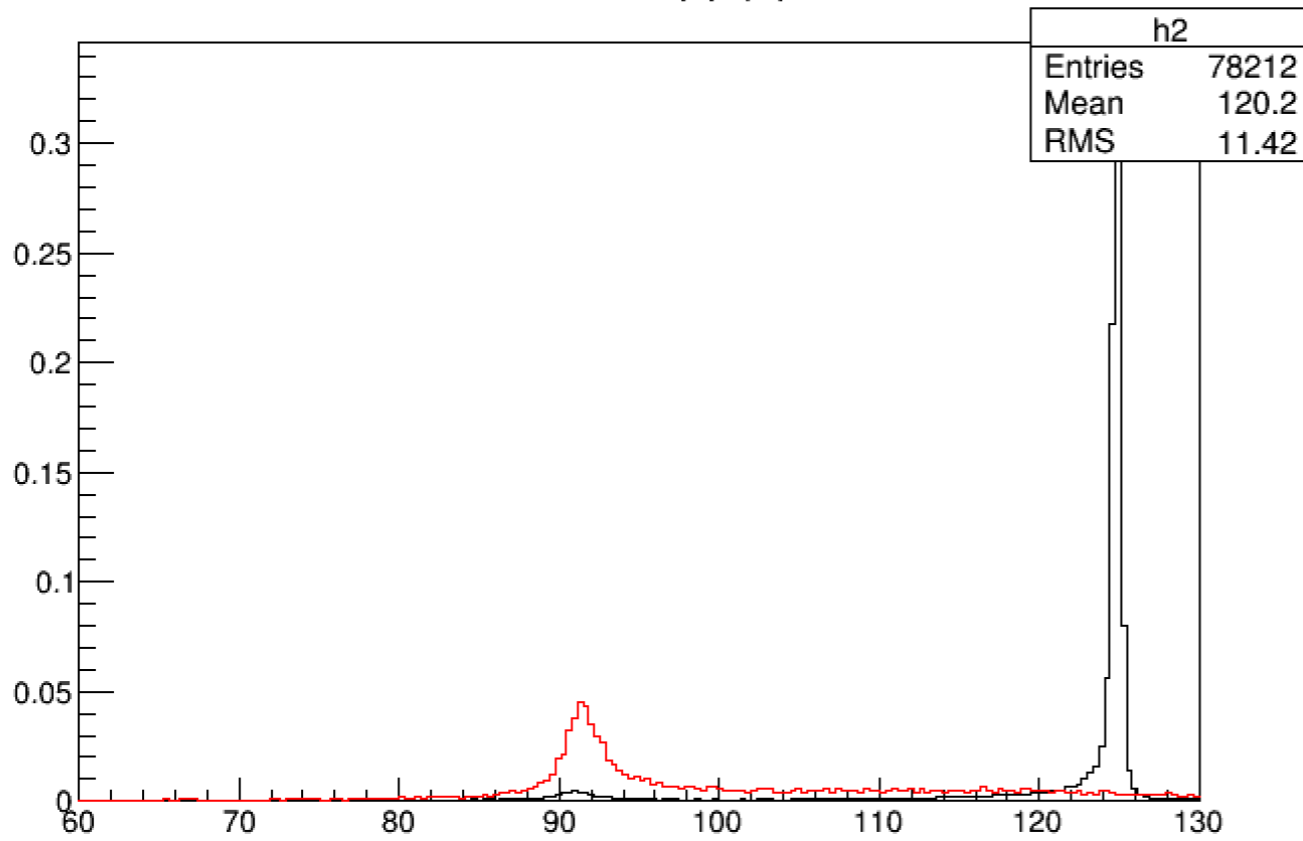
zz_l(4mu) bkg



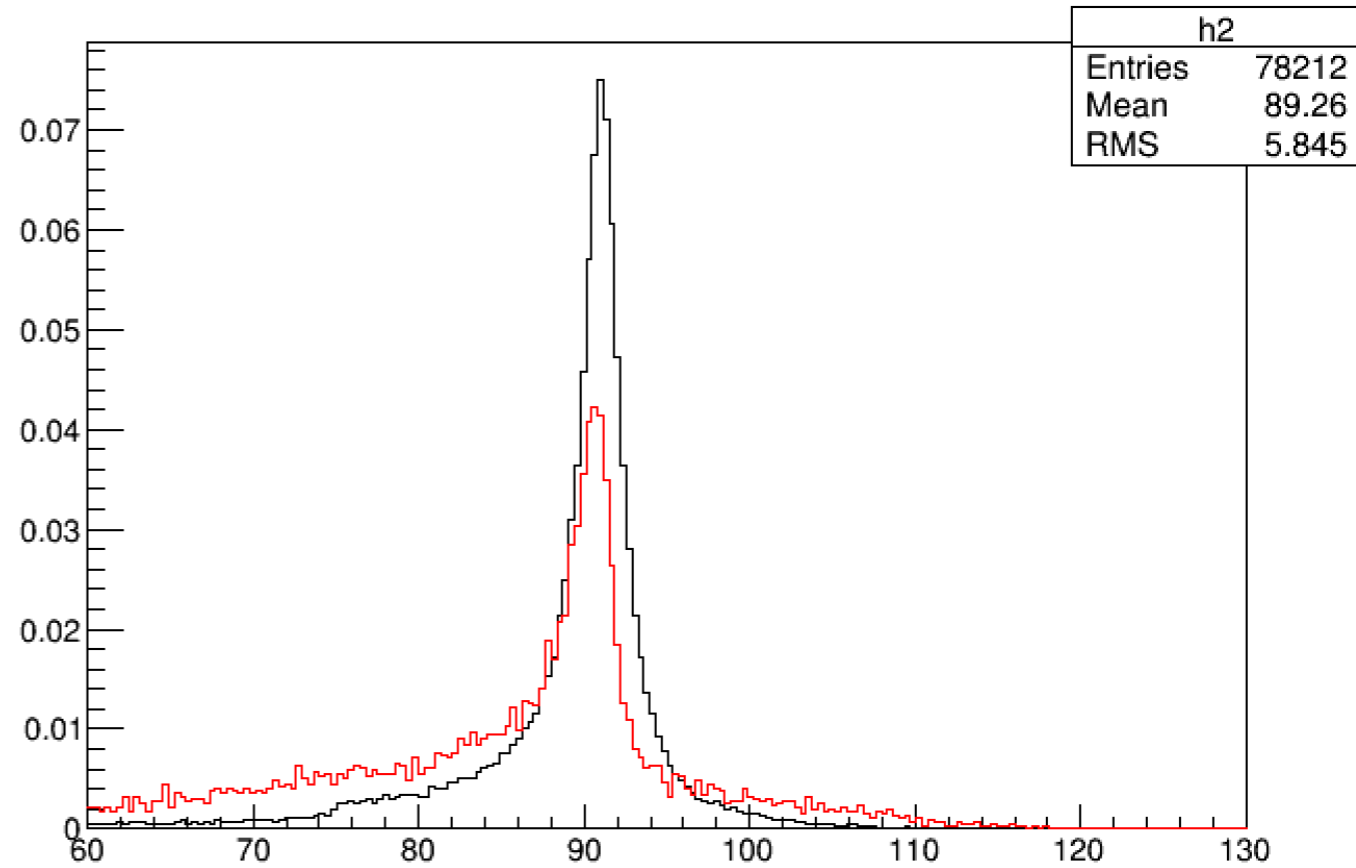
ee->ZH signale



mass of $\mu\mu(h)$

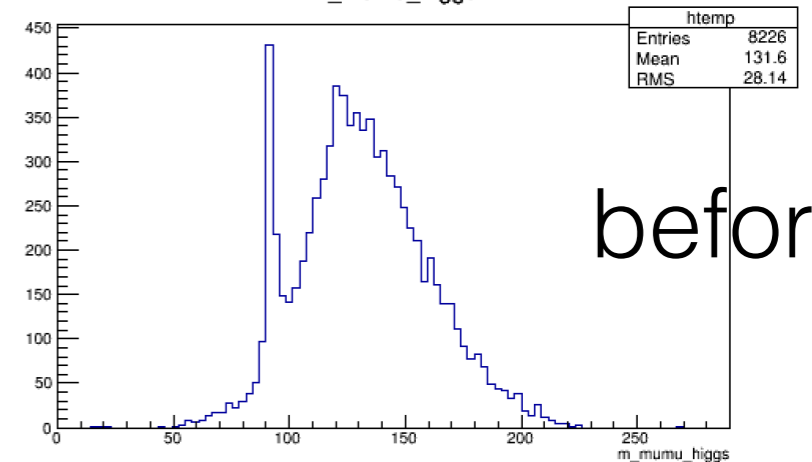


mass of $\mu\mu(z)$



but when I do the cutflow, there're still many bkg events left(a few hundred)

m_mumu_higgs



before