



中国科学院高能物理研究所

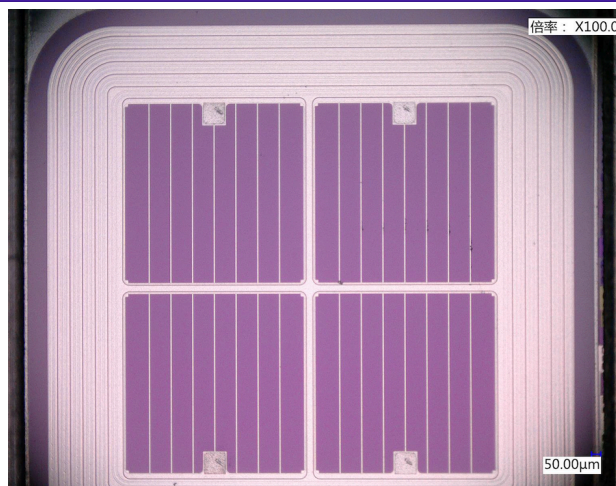
Institute of High Energy Physics Chinese Academy of Sciences

News

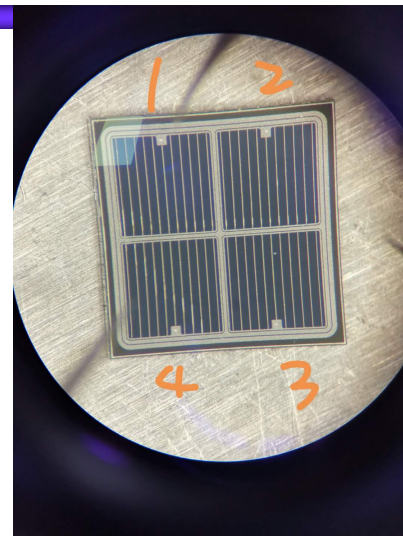
Zhijun Liang

Institute of High Energy Physics ,
Chinese Academy of Science

New NDL sensor with Guardring

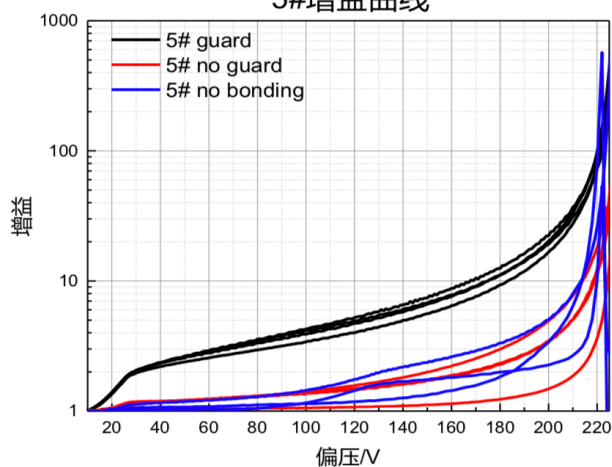


Old NDL sensor

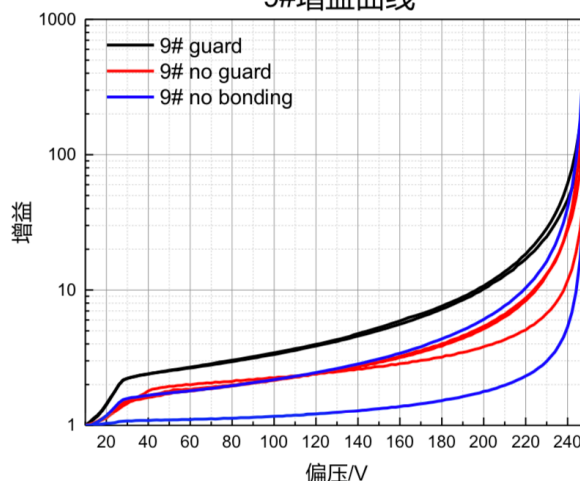


New NDL sensor

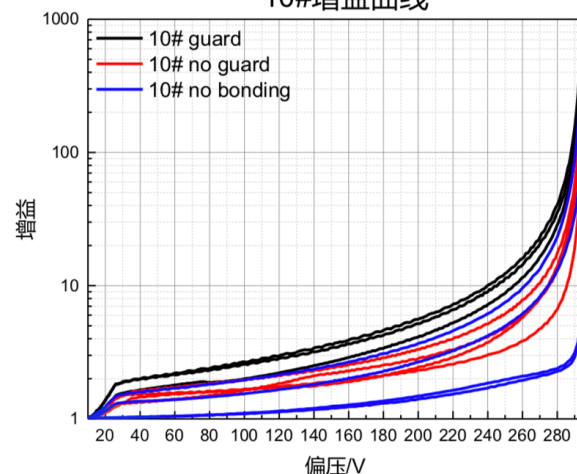
5#增益曲线



9#增益曲线



10#增益曲线



- 图中黑线与红线表示同一个器件，黑色保护环加电压，红色保护环不加电压，而蓝色表示没压焊保护环与管腿互联的金丝。
- 对于增益曲线，相比于不对保护环加偏压的器件，对保护环加偏压的器件具有更大的增益，以及更好的一致性。

July CYRIC irradiation

- Request 5 NDL sensor per fluence for CYRIC irradiation
 - https://docs.google.com/spreadsheets/d/192Nf07J0ZvUHA54daqEKU1NzId_4NYznsYrer3q1jN0/edit#gid=2029857545
 - 5e14, 1e15, 3e15

Fluence [neq/cm2]	5.00E+14					1.00E+15				3.00E+15			
	Thickness/die [mm]	Number	Width/die [mm]	Length/die [mm]	Total Area [mm2]	Number	Width/die [mm]	Length/die [mm]	Total area [mm2]	Number	Width/die [mm]	Length/die [mm]	Total area [mm2]
FBK													
W4 ATLAS 2_x_2_I	0.5	2	4	5	40	2	4	5	40	2	4	5	40
HPK-3.2													
HPK-3.2 5x5	0.2					1	8	8	64				
HPK-3.2 LG SE5	0.2	2	1.5	1.5	4.5	2	1.5	1.5	4.5	2	1.5	1.5	4.5
HPK-3.2 LG SE3	0.2	2	1.5	1.5	4.5	2	1.5	1.5	4.5	2	1.5	1.5	4.5
HPK-3.2 LG SE2	0.2	2	1.5	1.5	4.5	2	1.5	1.5	4.5	2	1.5	1.5	4.5
HPK-3.2 PiN	0.2	1	1.5	1.5	2.25	1	1.5	1.5	2.25	1	1.5	1.5	2.25
HPK-3.2 LG2x2 SE5 IP9	0.2					1	3	3	9	1	3	3	9
HPK-3.2 LG2x2 SE5 IP3	0.2					1	3	3	9				
HPK-3.2 LG2x2 SE3 IP3	0.2					1	3	3	9				
HPK 35um													
HPK-1.1 LG SE5	0.2	2	1.5	1.5	4.5	2	1.5	1.5	4.5	2	1.5	1.5	4.5
HPK-1.2 LG SE5	0.2	2	1.5	1.5	4.5	2	1.5	1.5	4.5	2	1.5	1.5	4.5
HPK-2 LG SE5	0.2	2	1.5	1.5	4.5	2	1.5	1.5	4.5	2	1.5	1.5	4.5
HPK-BEST LG2x2 SE5 IP9						1	3	3	9	1	3	3	9
HPK-BEST LG2x2 SE5 IP3						1	3	3	9				
NDL	0.3	5	3	3	45	5	3	3	45	5	3	3	45
Total area [mm2]					114.25				223.25				132.25